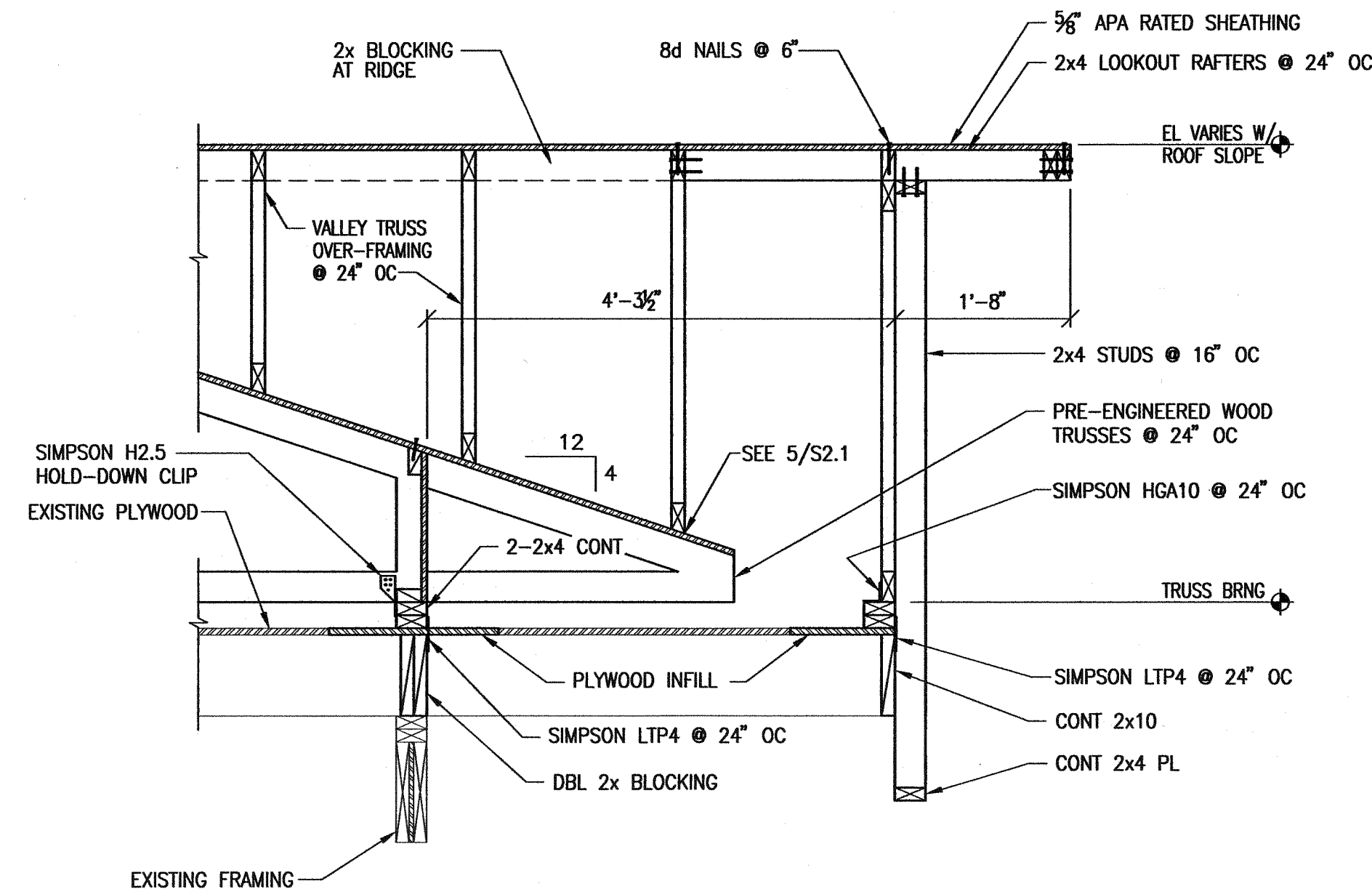
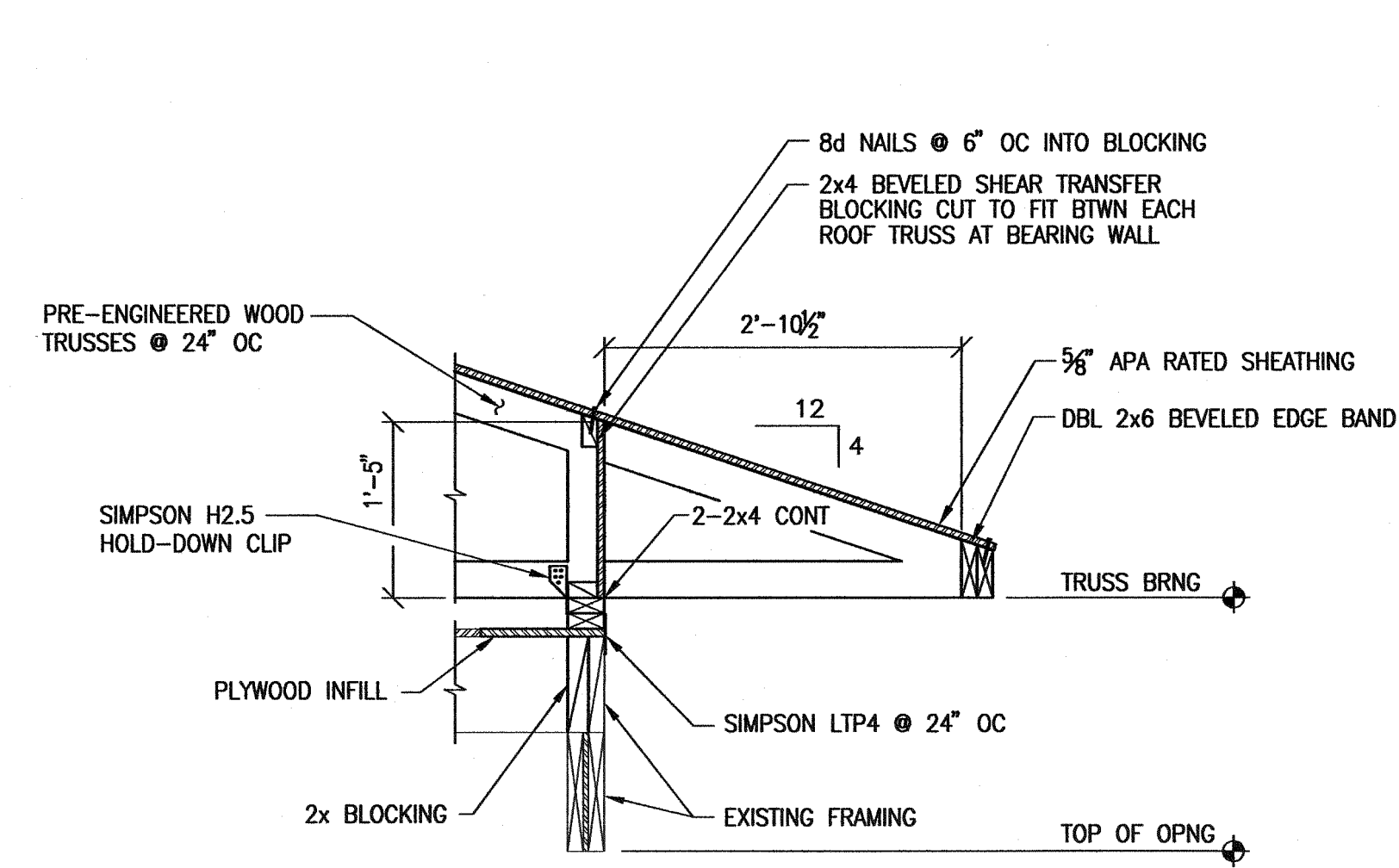


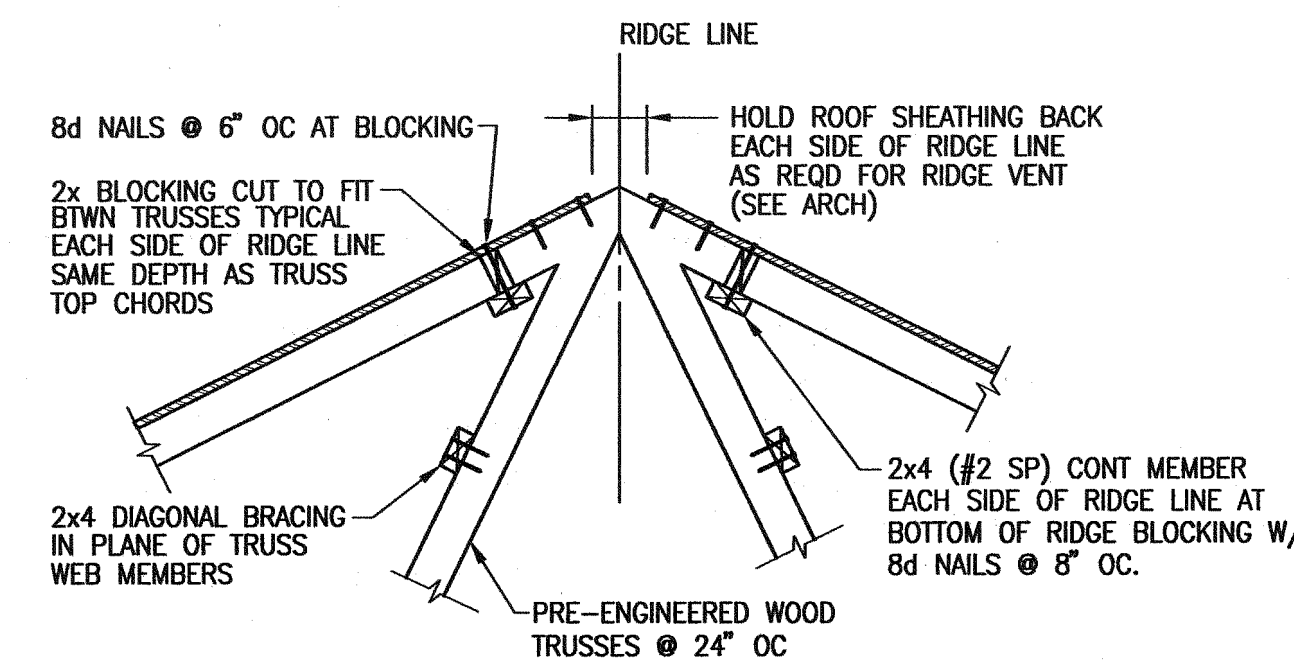
1 SECTION
S2.1 3/4"=1'-0"
(ALTERNATE BID)



2 SECTION
S2.1 3/4"=1'-0"
(ALTERNATE BID)

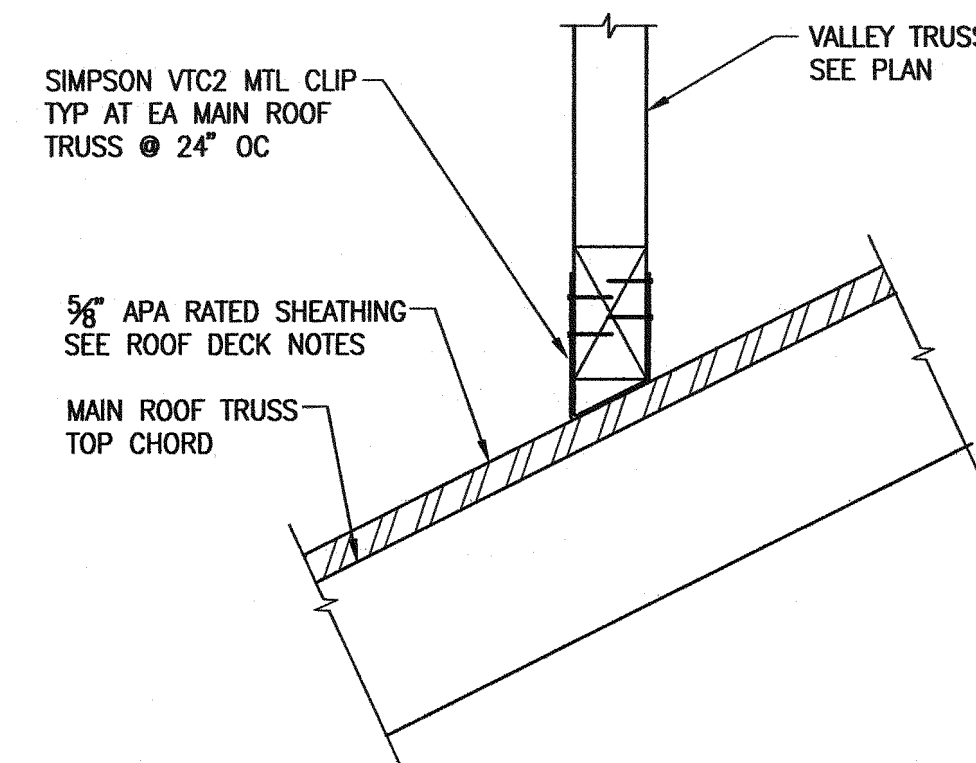


3 SECTION
S2.1 3/4"=1'-0"
(ALTERNATE BID)

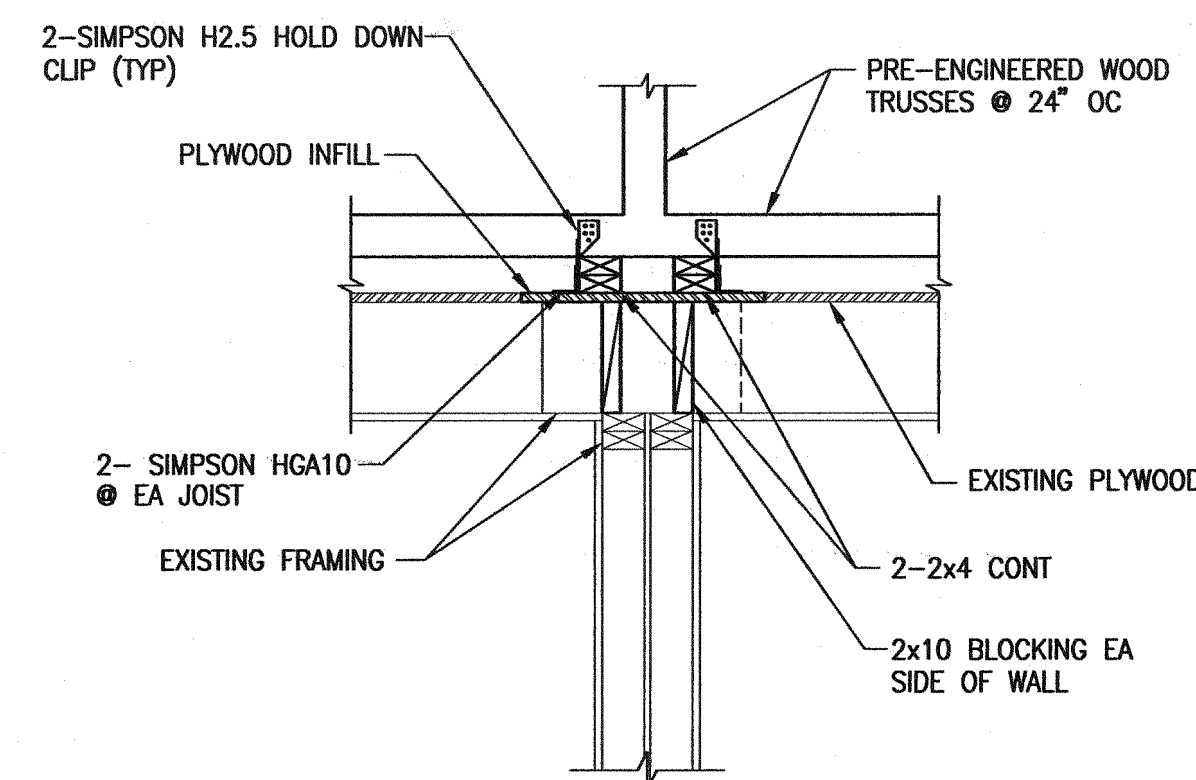


NOTE:
THIS SECTION APPLIES
TO RIDGE VENT
LOCATIONS.

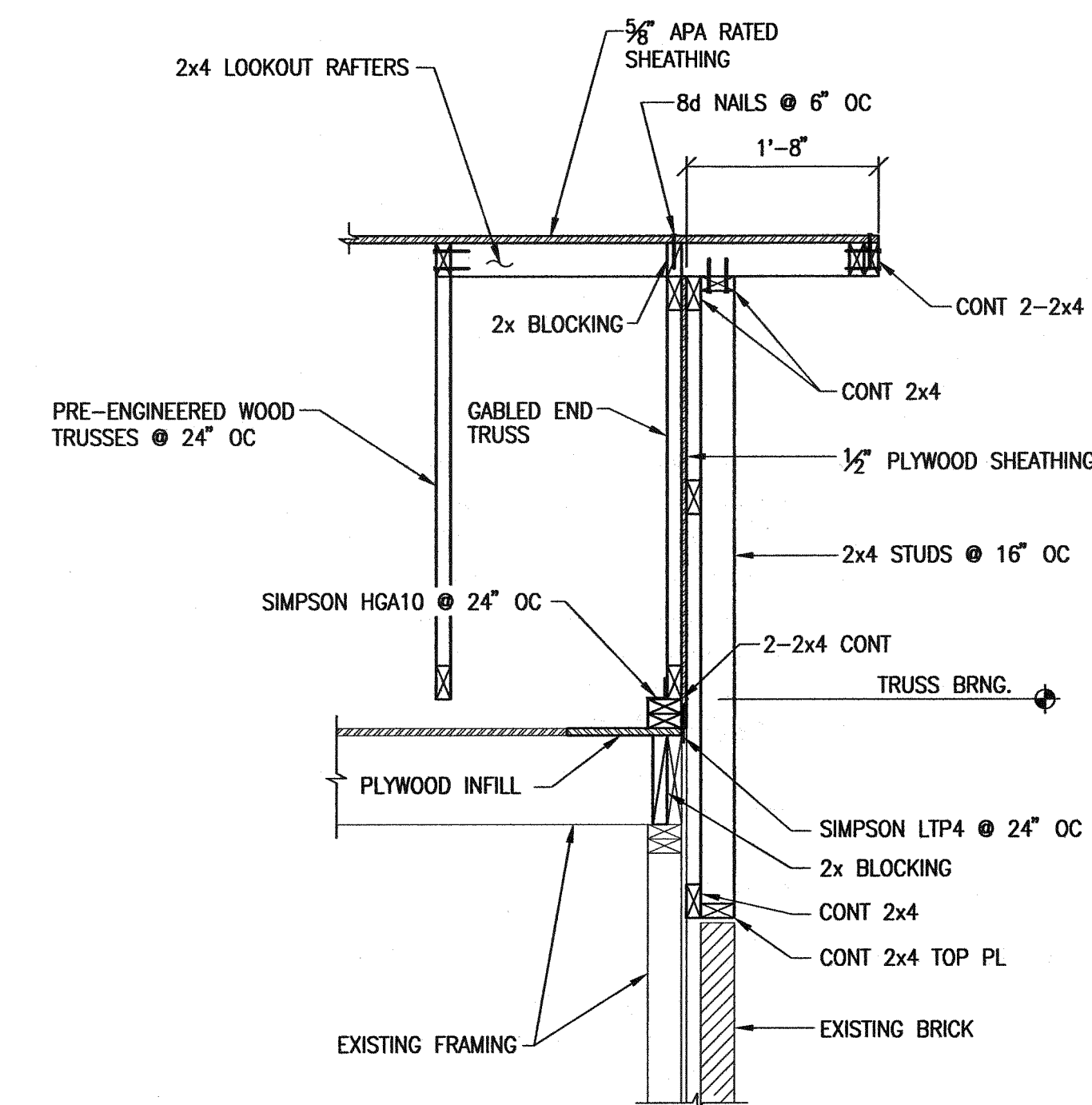
4 SECTION
S2.1 3/4"=1'-0"
(ALTERNATE BID)



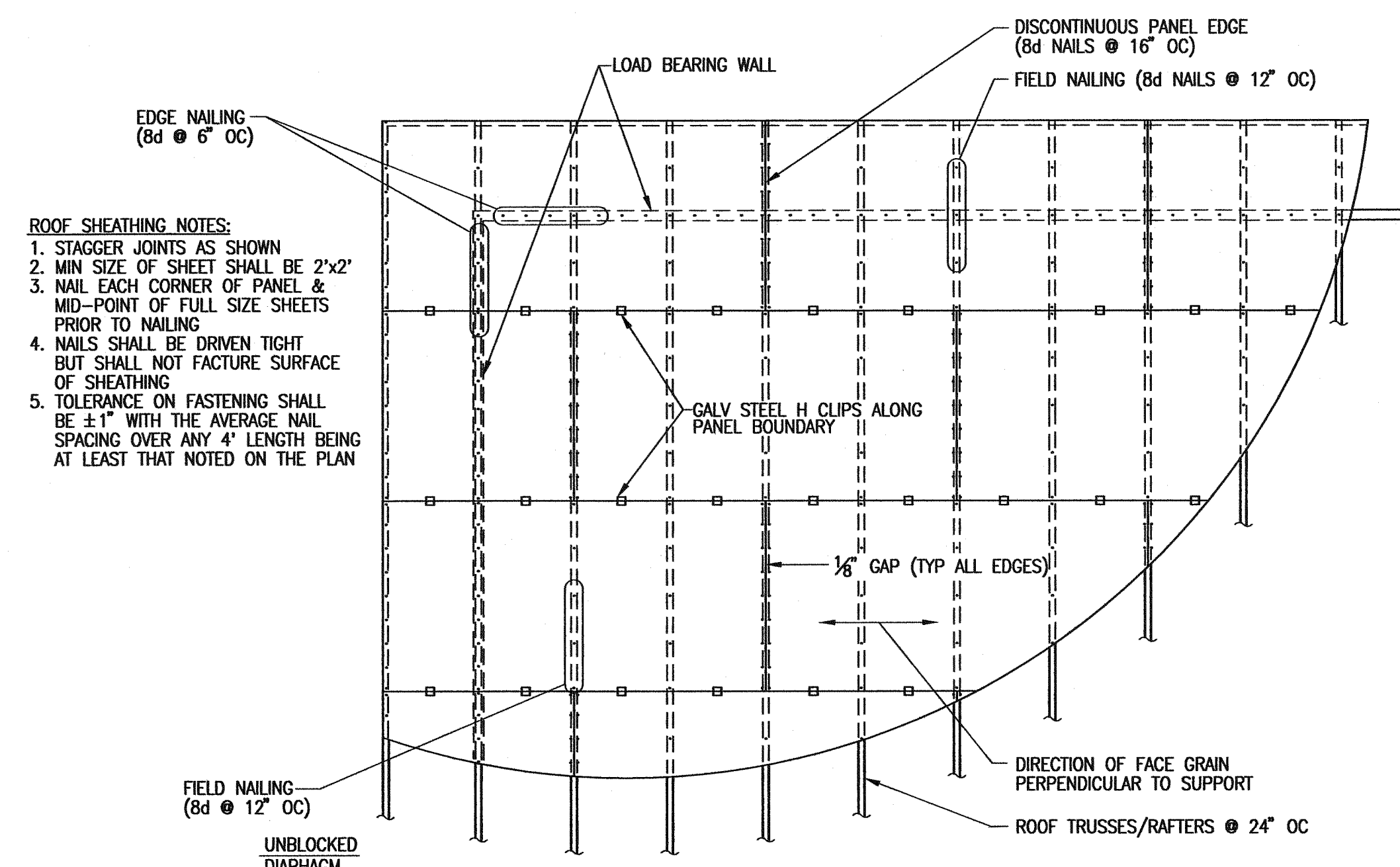
5 DETAIL-TRUSS CONN
S2.1 1 1/2"=1'-0"
(ALTERNATE BID)



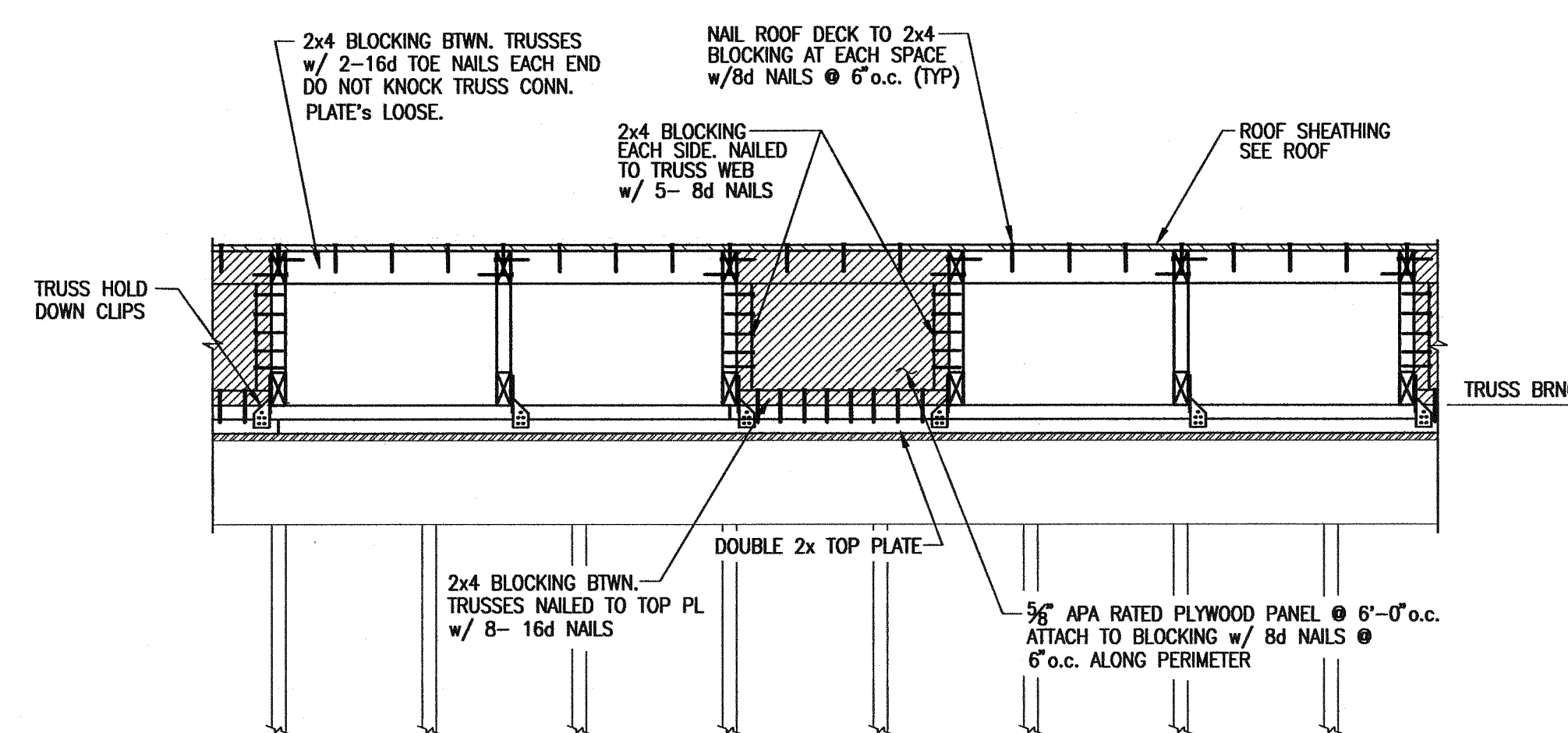
6 SECTION
S2.1 3/4"=1'-0"
(ALTERNATE BID)



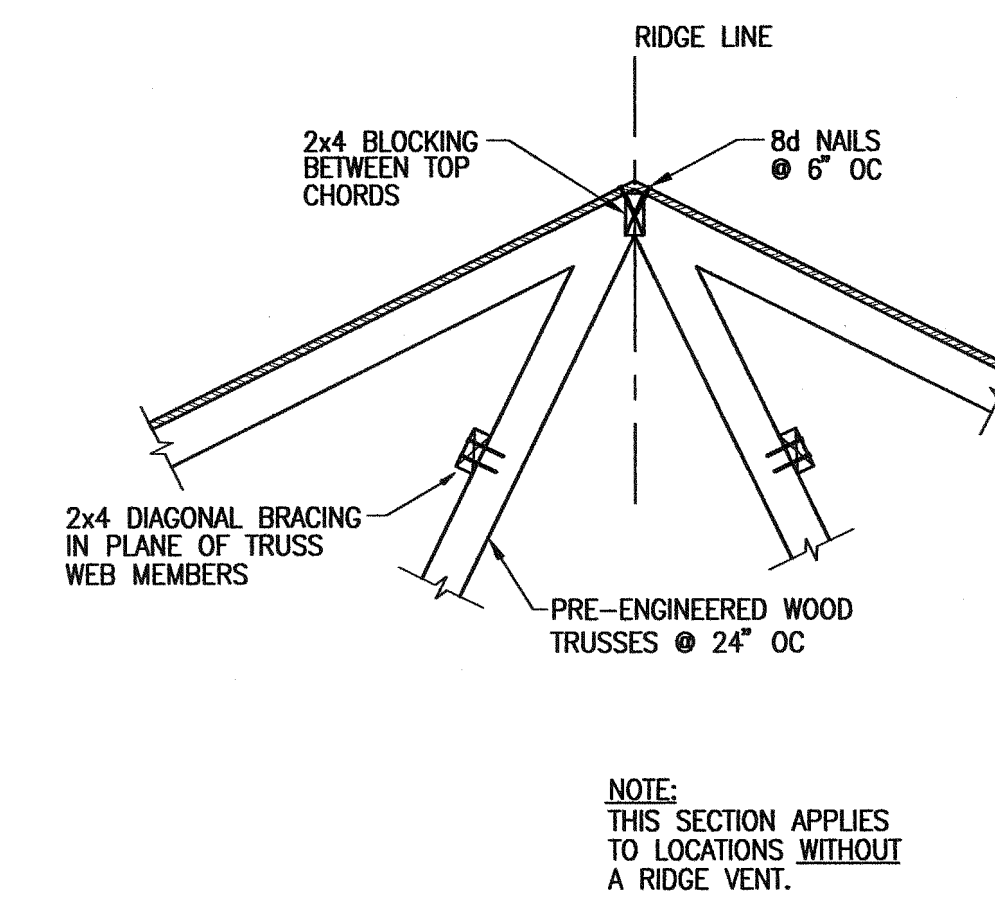
7 SECTION
S2.1 3/4"=1'-0"
(ALTERNATE BID)



8 DETAIL-ROOF SHEATHING FASTENER PATTERNS
S2.1 N.T.S.
(ALTERNATE BID)

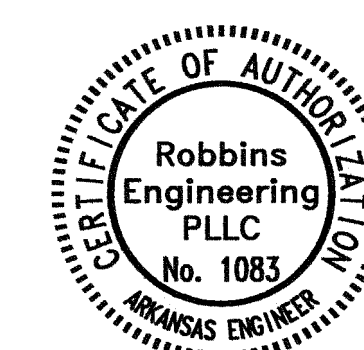


9 DETAIL-TYP. EXTERIOR SHEAR TRANSFER BRACE AT ROOF TRUSS
S2.1 3/4"=1'-0"
(ALTERNATE BID)



NOTE:
THIS SECTION APPLIES
TO LOCATIONS WITHOUT
A RIDGE VENT.

10 SECTION
S2.1 1 1/2"=1'-0"
(ALTERNATE BID)

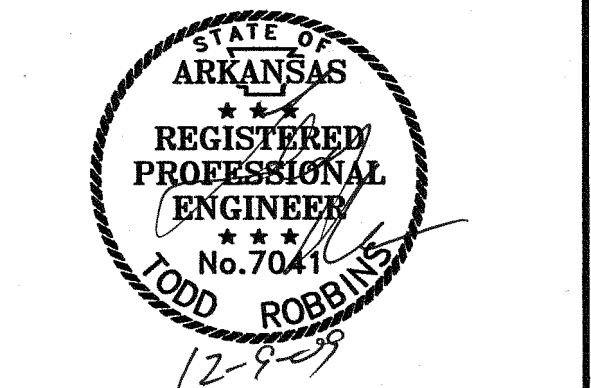


ROBBINS ENGINEERING
STRUCTURAL CONSULTANTS
2725 CANTRELL RD., SUITE 104,
LITTLE ROCK, ARKANSAS 72202
(501)664-7575 / FAX (501)664-7474
WWW.ROBBINS-ENGINEERING.COM

ROOF RENOVATION
OF STADIUM PARK
APARTMENTS

UNIVERSITY OF
CENTRAL ARKANSAS
CONWAY, ARKANSAS

PROJECT NAME _____



SEAL _____

REVISIONS _____

DATE **02 NOVEMBER 2009**

PROJECT NUMBER **XXXXXX**

DRAWING NUMBER **S2.1**