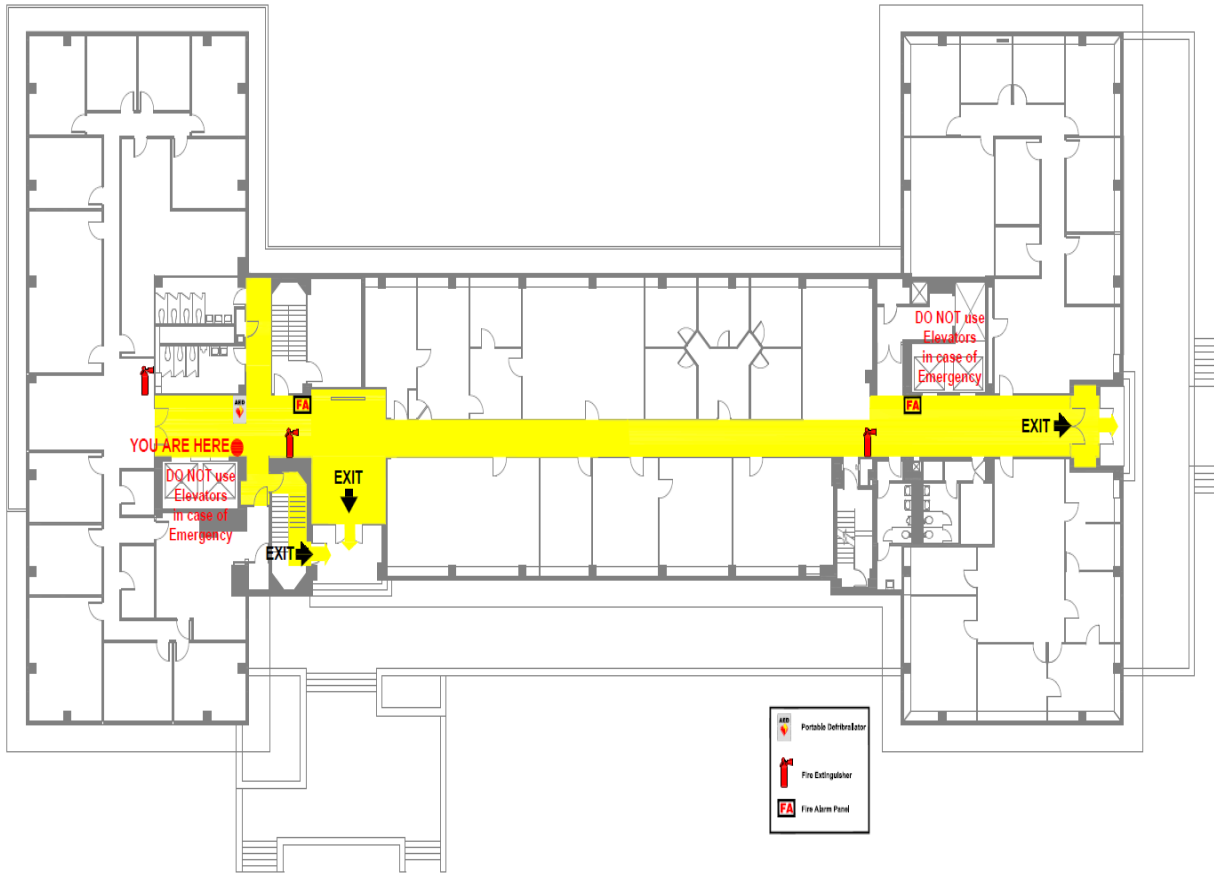


TSS – DIVISION of BUILDING AUTHORITY
Winthrop Rockefeller Building
501 Woodlane, Little Rock, AR

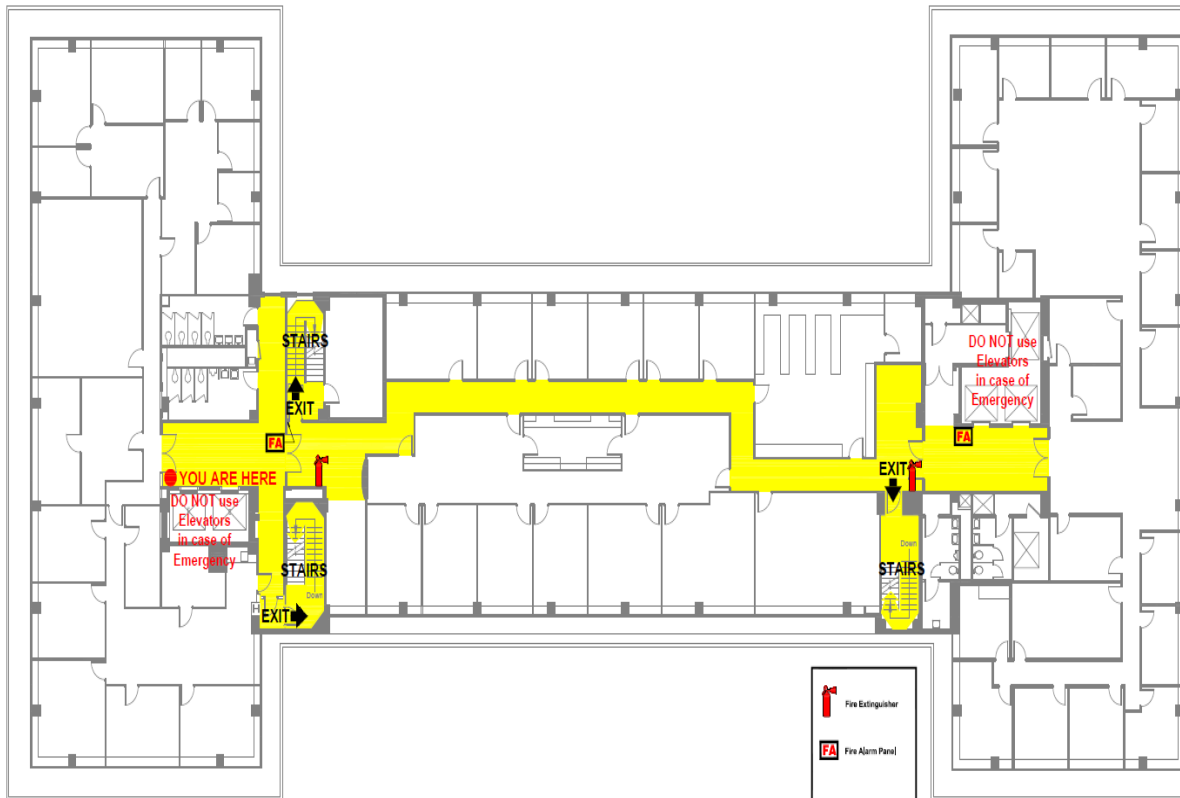
Evacuation procedures should take into account any specific building and occupant needs. Tenants should add maps, exit routes, other steps, actions, or precautions specific to their area(s). The following are general Evacuation Plans for the 501 Building:



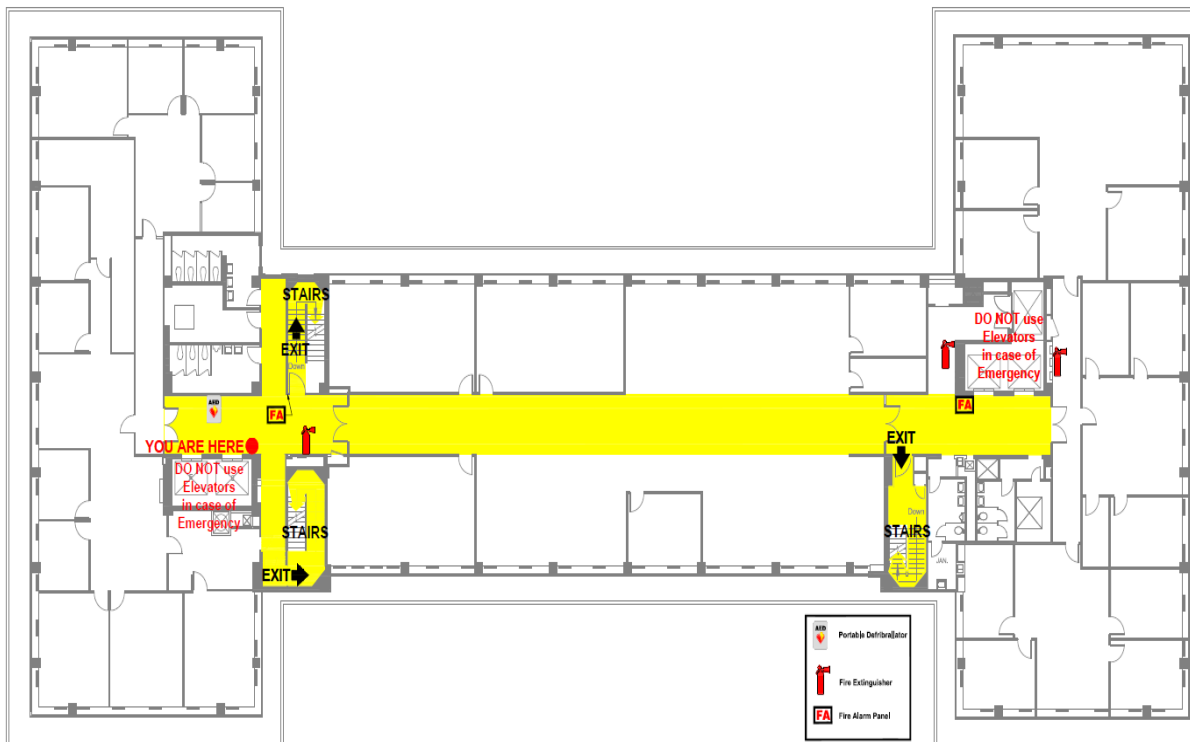
GROUND FLOOR EVACUATION PLAN



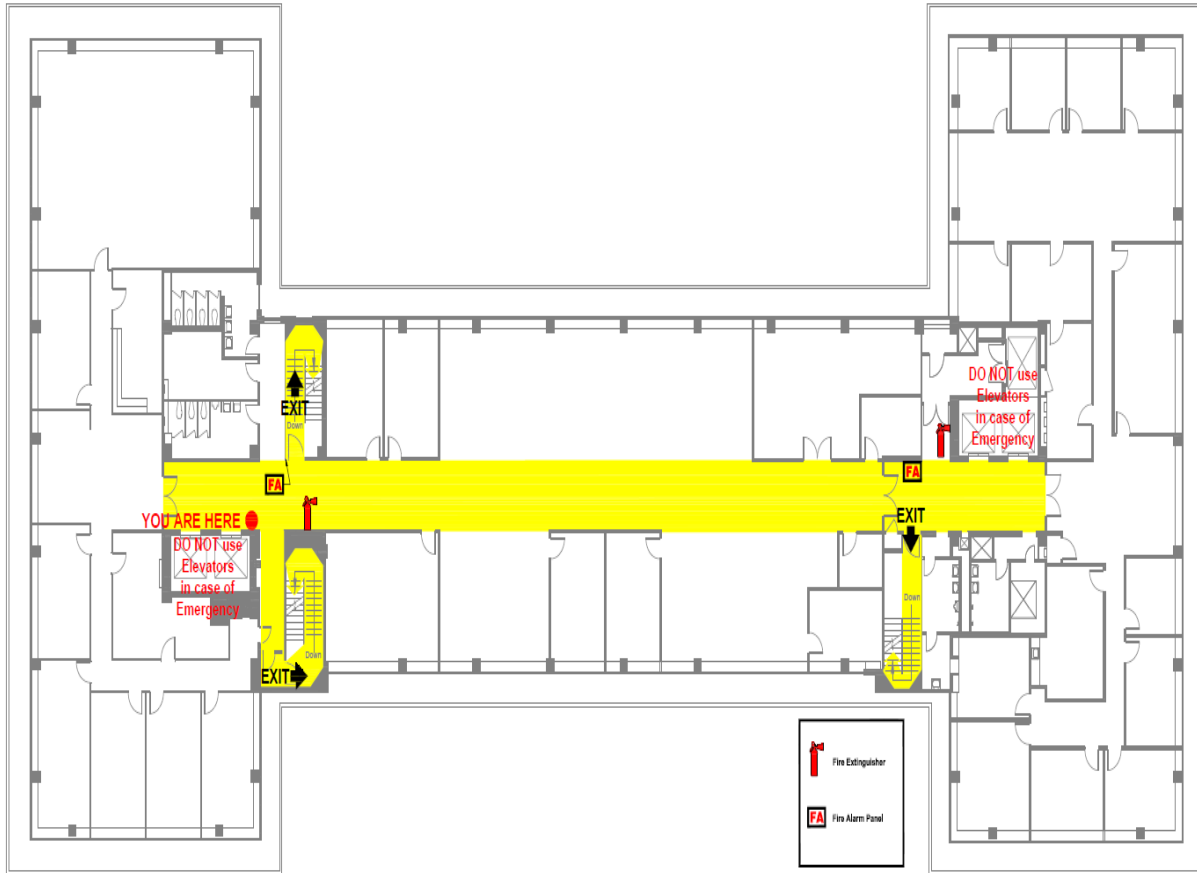
FIRST FLOOR EVACUATION PLAN



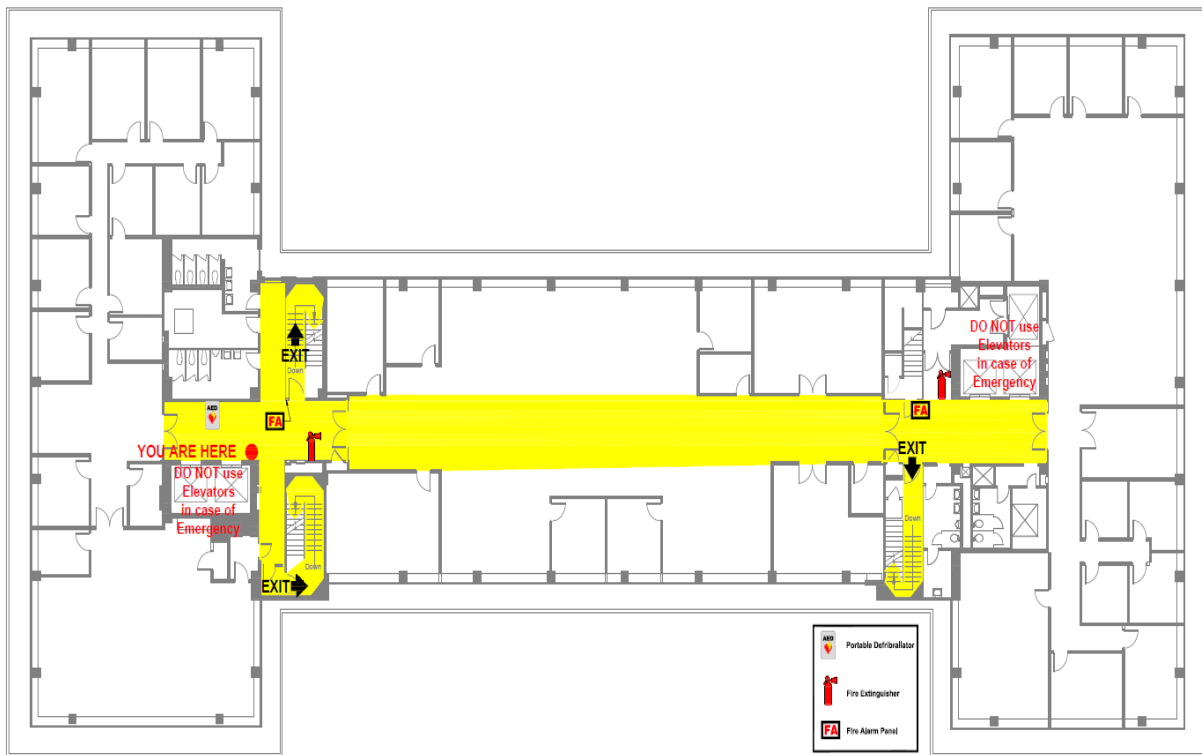
SECOND FLOOR EVACUATION PLAN



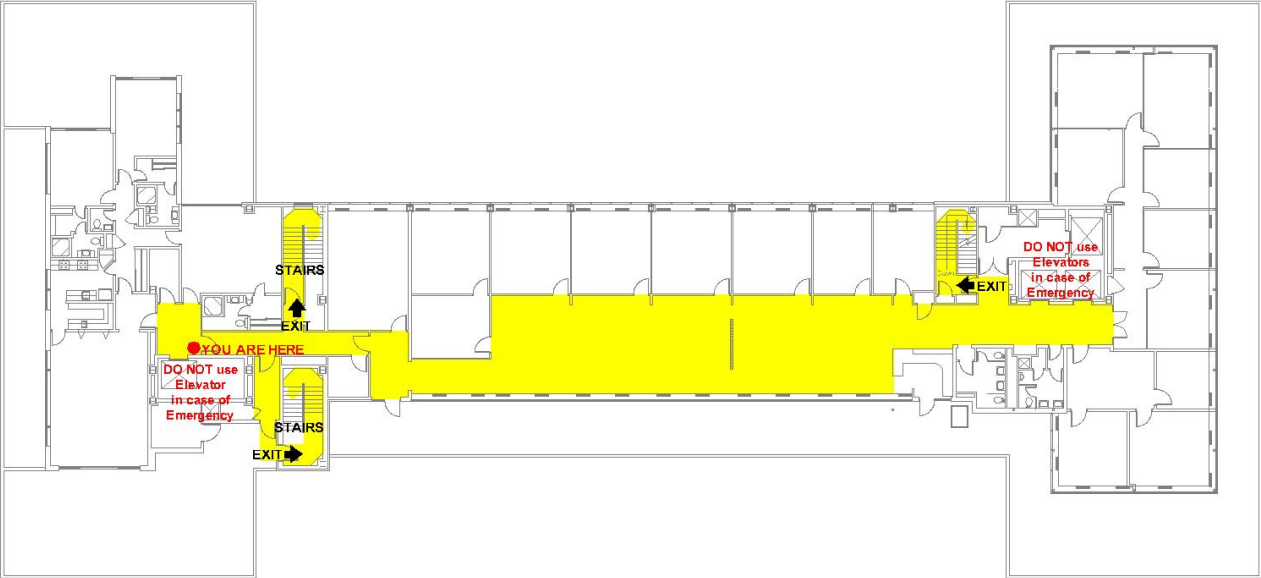
THIRD FLOOR EVACUATION PLAN



FOURTH FLOOR EVACUATION PLAN



FIFTH FLOOR EVACUATION PLAN



SIXTH FLOOR EVACUATION PLAN