

Adolescent Marijuana Use in Arkansas

Marijuana use by adolescents in Arkansas is a serious health and safety problem...

Of the over 88,000 students (grades 6, 8, 10, and 12) who participated in the 2007 Arkansas Prevention Needs Assessment (APNA) survey¹,

- 15.5% have used marijuana sometime in their lives
- 6.8% have used marijuana during the past 30 days

Regarding "regular" use (having used in the past 30 days),

- Arkansas students in grades 8, 10, and 12 report lower use than their peers throughout the Nation
- 1 in 7 of Arkansas' 12th graders report using marijuana in the past 30 days
- Regular marijuana use increases with grade level

Arkansas students who use marijuana do so for the first time at age 13, on average

Other interesting facts about adolescent marijuana use in Arkansas

- The average age of first use is 13.6 years old (this is 6 months earlier than students report "regular" alcohol use)
- 4 out of 5 teens who use marijuana also drink alcohol
- Marijuana use is down from 2002 (from 10.6% to 6.8%)
- Only half of Arkansas' 12th graders see "great risk" in smoking marijuana regularly

Parents' attitudes about marijuana use impact students' use dramatically

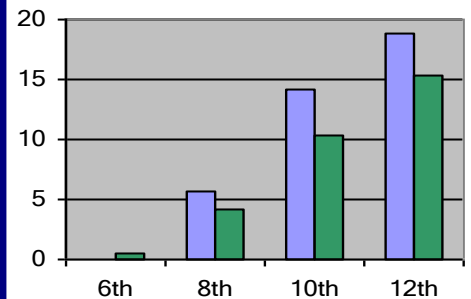
Parents and other adults should talk with young people about these consequences of marijuana use:

- Failing students (earning Ds and Fs) are 6 times more likely to report marijuana use than students earning A's (APNA, 2007)
- The part of the brain responsible for memory and emotion can be damaged by marijuana (Office of National Drug Control Policy)
- Marijuana smoke can contain 3-5 times more tar and carbon monoxide than cigarette smoke (Office of National Drug Control Policy)
- Marijuana affects alertness, concentration and reaction time—skills needed for safe driving (National Institute on Drug Abuse)

¹ The APNA student survey is conducted annually by the AR Department of Human Services

² The Monitoring the Future Survey is a project of the National Institute on Drug Abuse (NIDA)

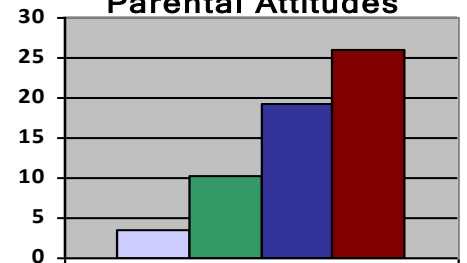
Past 30 Day Marijuana Use



Source: Monitoring the Future², 2007; APNA, 2007
Note: MTF data is not available for 6th graders

United States Arkansas

Marijuana Use According to Parental Attitudes



Source: Monitoring the Future, 2007; APNA, 2007
Note: MTF data is not available for 6th graders

Very Wrong Wrong A Little Bit Wrong Not Wrong at All

To learn more about marijuana use in your area, contact:
Alcohol and Drug Abuse Prevention
305 South Palm Street • Little Rock, AR 72205 • (501) 686-9030