

SFY 2008

Annual Report Card



Produced for:
*Arkansas Department of Human Services
Division of Children and Family Services*

Produced by:
Hornby Zeller Associates, Inc.

TABLE OF CONTENTS

Executive Summary	i
Part I: Performance Indicators	1
Percentage of Families with True Allegations of Child Maltreatment Three Months, Six Months and One Year after a Previous True Report.....	2
Percentage of Foster Families with True Cases Reports of Maltreatment.....	3
Percentage of Children Receiving Supportive Services, Protective Services or Intensive Family Services who were Abused or Neglected within One Year of the Initiation of Services	4
Percentage of Children Receiving Supportive Services, Protective Services or Intensive Family Services who Entered Care within One Year of Initiation of Services	5
Percentage of Children Entering Foster Care who Returned Home within Eighteen Months.....	6
Percentage of Children in Foster Care who Experienced more than Three Placements within Eighteen Months of Entering Care.....	7
Percentage of Siblings in Foster Care who are Placed Together.....	8
Percentage of Children Living with Adoptive Families within Twelve Months of Termination of Parental Rights.....	9
Children Placed in Pre-adoptive Homes whose Adoptions were Finalized within Twelve Months of Entering Placement	10
Part II: Compliance Index	11
Timely Initiation of Child Maltreatment Assessments.....	12
Timely Completion of Child Maltreatment Assessments	13
24- and 72-Hour Initial Health Screenings.....	14
Comprehensive Health Assessments	15
Foster Home Recruitment	16
Foster Home Re-evaluations.....	16
Required Visits Made by Worker.....	17
Part III: Description of Population and Services	18
Section I: True Child Maltreatment Reports	19
Child Maltreatment Assessments.....	19
Characteristics of Children in True Maltreatment Reports.....	20
Children Involved in Allegations of True Maltreatment Reports.....	22
Section II: Foster Care	23
Characteristics of Children in Foster Care.....	23
Entries into Foster Care	27
Exits from Foster Care	31
Permanency Goals of Children in Foster Care.....	34
Length of Stay of Children in Foster Care	35

Number of Placements of Children in Foster Care	36
Characteristics of Children who Experienced Two or More Placements	37
Current Placement of Children in Foster Care	39
Characteristics of Children on Runaway Status at the End of the Year	40
Characteristics of Children in Relative Care.....	42
Section III: Adoption	44
Characteristics of Children with the Permanency Goal of Adoption During the Year.....	44
Characteristics of Children with the Permanency Goal of Adoption at the End of the Year	46
Characteristics of Children whose Parents had their Parental Rights Terminated During the Year.....	48
Characteristics of Children Available for Adoption at the End of the Year	50
Current Placement of Children Available for Adoption	52
Characteristics of Children Placed in Pre-adoptive Homes.....	53
Children not Placed in Pre-adoptive Homes whose Parents had their Parental Rights Terminated	55
Special Needs	55
Characteristics of Children with Finalized Adoptions.....	56
Subsidized Adoptions.....	58
Characteristics of Children who Receive Adoption Subsidies	58
Adoptive Homes.....	60
APPENDICES.....	61

EXECUTIVE SUMMARY

The Annual Report Card (ARC) is distributed to agency managers and to the legislative committees dealing with children and youth. The ARC for State Fiscal Year (SFY) 2008 consists of three parts:

1. **Performance Indicators**, which provide information on service outcomes, such as:
 - a. *Percentage of Families with True Allegations of Child Maltreatment Three Months, Six Months and One Year After a Previous True Report*
 - b. *Percentage of Siblings in Placement who are Placed Together*
 - c. *Percentage of Children Living with Adoptive Families within Twelve Months of the Termination of Parental Rights*

2. **Compliance Index**, which reports on the Division's compliance with requirements set by DCFS with guidance from the Arkansas legislative children and youth committees, such as:
 - a. *Timely Completion of Child Maltreatment Assessments*
 - b. *24- and 72-Hour Initial Health Screenings for Children Entering Foster Care*
 - c. *Foster Home Recruitment*

3. **Description of Population and Services**, which describes the children who were the subjects of maltreatment reports, served in foster care and/or provided adoption services, such as:
 - a. *Types of Allegations in Child Maltreatment Reports*
 - b. *Permanency Goals of Children in Foster Care*
 - c. *Characteristics of Children Placed in Adoptive Homes*

The ARC provides this information on a yearly basis, showing trends over time. Descriptions of the client population at the various service stages are provided as well, so that the agency has information on populations and issues to target to improve performance.

Part I: Performance Indicators

The Division of Children and Family Services (DCFS) has established nine performance indicators to measure progress with regard to its major goals of child safety, permanency and well-being.

The Division improved in one area regarding performance indicators this fiscal year:

- Children Placed in Pre-adoptive Homes whose Adoptions were Finalized within Twelve Months of Entering Placement

The percentage of children placed in pre-adoptive homes whose adoptions were finalized within 12 months of entering placement was **76 percent** for SFY 2008, an increase of 9 percentage points over SFY 2007 (67%).

Part II: Compliance Index

DCFS has set compliance measures with guidance from the House Committee on Aging, Children and Youth, Legislative and Military Affairs and the Senate Interim Committee on Children and Youth. An index is compiled by reporting the level of compliance with these measures.

The Division improved in five areas regarding compliance requirements this fiscal year:

- Timely Completion of Child Maltreatment Assessments

Of the child maltreatment assessments assigned to DCFS for investigation during SFY 2008, **61 percent** were completed within the required 30-day period, an increase of four percentage points from SFY 2007 (57%) but below the goal of 90 percent.

- 24- and 72-Hour Initial Health Screenings

Of the children who required a health screening within 24 hours, **89 percent** received the screening in a timely manner for SFY 2008. The compliance rate was seven percentage points higher than what it was for SFY 2007 but below the goal of 95 percent.

Of the children who required a health screening within 72 hours, **84 percent** received their screenings in a timely manner during SFY 2008. The compliance rate was three percentage points higher than SFY 2007 but below the goal of 95 percent.

- Comprehensive Health Assessments

Of the children who entered foster care between May 2007 and April 2008 and who remained in care for at least 60 days, **87 percent** received their comprehensive health assessments within the required

timeframe, a 29 percentage point increase from SFY 2007 and below the goal of 95 percent.

- Required Visits Made by Worker

The percentage of children who received a visit during the year averaged **66 percent** from July 2007 to June 2008, an increase of nine percentage points over SFY 2007 (57%).

- Foster Home Recruitment

The percentage of foster homes recruited during SFY 2008 increased to **94 percent** of the compliance goal (320 homes), 22 percentage points higher than SFY 2007 (72%).

While the Division improved in five areas, there was one area which resulted in a decline in compliance during SFY 2008.

- Timely Initiation of Child Maltreatment Assessments

Of the child maltreatment assessments assigned to DCFS for investigation during SFY 2008, **81 percent** were initiated within the required period, which was five percentage points lower than SFY 2007 (86%).

Part III: Description of Population and Services

This section describes the number and status of maltreatment assessments, services provided, children who were subjects of maltreatment reports, children who were served in foster care and children who received adoption services.

There were no remarkable differences in population and services between SFY 2007 and SFY 2008. However, when trends were observed from SFY 2000 to SFY 2008, there were notable differences, including:

- Supportive Services, Protective Services and Foster Care

The combined number of supportive services, protective services and foster care cases increased by almost **13 percent** between SFY 2000 and SFY 2007, although they remained consistent between SFY 2007 and SFY 2008.

- Children in Foster Care

The total number of children in foster care between the ages of zero and five increased by **70 percent** from SFY 2000 (1,650 children) to SFY 2007 (2,802 children), although this number leveled off between SFY 2007 (2,802) and SFY 2008 (2,777).

The total number of children in foster care decreased by **3 percent** from SFY 2007 (7,194) to SFY 2008 (6,974).

PART I: PERFORMANCE INDICATORS

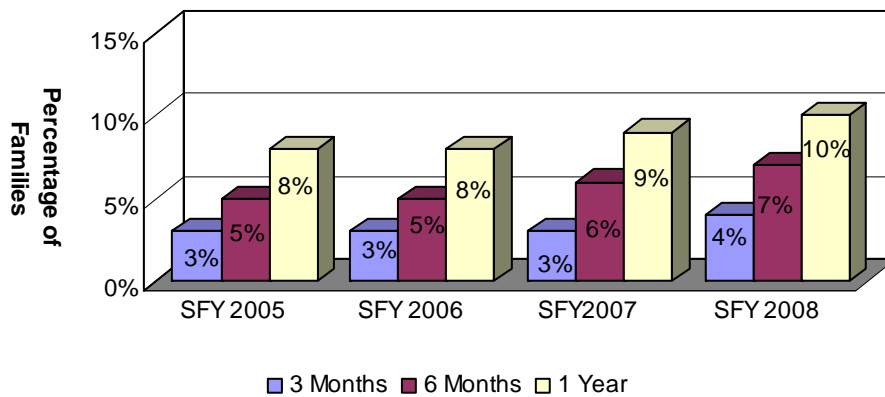
The Division has established nine performance measures to indicate levels of achievement of its major goals of child safety, family preservation and permanency:

- Percentage of families with true allegations of child maltreatment three months, six months and one year after a previous true report;
- Percentage of foster families with true reports of maltreatment;
- Percentage of children receiving Supportive Services, Protective Services or Intensive Family Service (IFS) who were abused or neglected within one year of the initiation of services;
- Percentage of children receiving Supportive Services, Protective Services or Intensive Family Service (IFS) who entered foster care within one year of the initiation of services;
- Percentage of children in foster care who returned home within 18 months;
- Percentage of children in foster care who have experienced more than three placements within eighteen months of entering care;
- Percentage of siblings in foster care who are placed together;
- Percentage of children living with adoptive families within 12 months of the termination of parental rights; and
- Number of children placed in pre-adoptive homes whose adoption were finalized within 12 months of entering a pre-adoptive placement.

Percentage of Families with True Allegations of Child Maltreatment Three Months, Six Months and One Year after a Previous True Report

Of the 6,885 families who were involved in a true report of maltreatment between July 2006 and June 2007, 294 families (4%) experienced a repeat true allegation of maltreatment within three months of the initial report. Of those same 6,885 families, 454 (7%) were involved in a repeat true report within six months of the original report and 690 (10%) were involved in a repeat true report within 12 months of the first report¹. Percentages of repeat maltreatment for SFY 2008 were slightly higher than those for SFY 2007.

Chart 1: Percentage of Families with True Allegations of Child Maltreatment within 3 Months, 6 Months and One Year after a Previous True Report

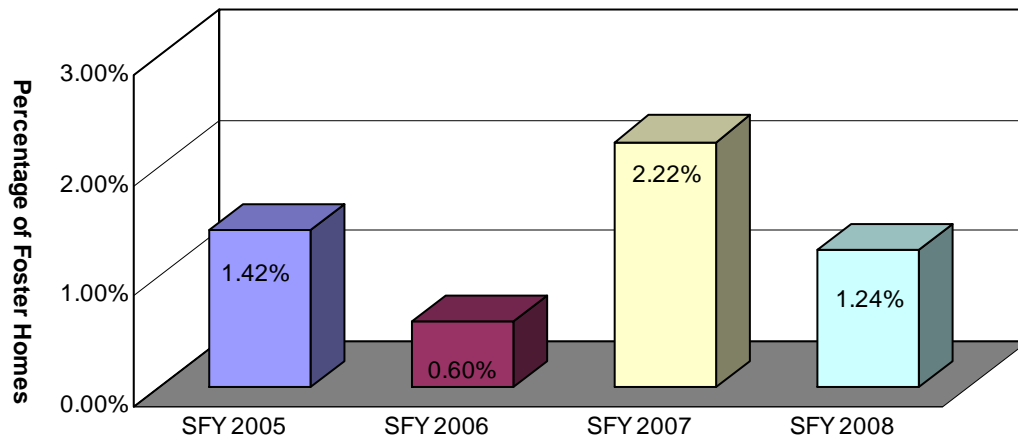


¹ Of the 690 repeat referrals within 12 months, 377 (55%) involved both the same type of abuse and the same perpetrator.

Percentage of Foster Families with True Reports of Maltreatment

There were 152 foster home maltreatment reports received during SFY 2008. Of those, 18 were found to be true. Based on the 1,455 DCFS foster homes² open during the year, the percentage of foster families with true reports of maltreatment was 1.24 percent. This is down 0.98 percentage points from SFY 2007 (2.22%).

Chart 2: Percentage of Foster Families with True Reports of Maltreatment

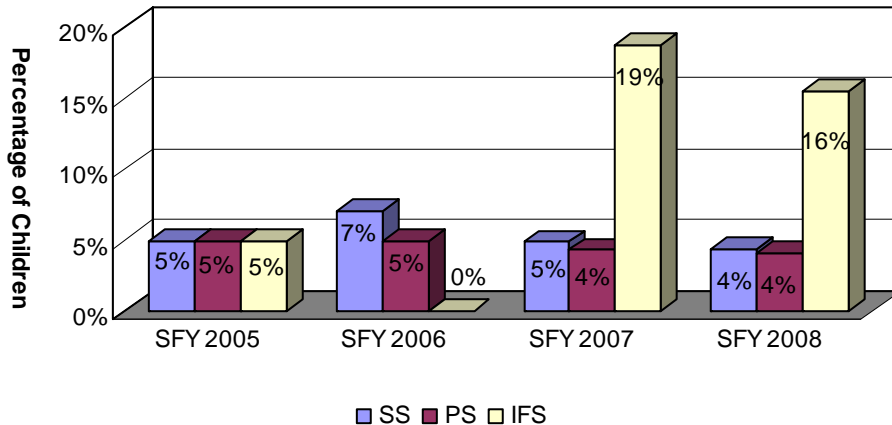


² This includes family and therapeutic foster homes.

Percentage of Children Receiving Supportive Services, Protective Services or Intensive Family Services who were Abused or Neglected within One Year of the Initiation of Services

There were 840 children who began receiving supportive services (SS) between July 2006 and June 2007. Of those children, 37 (4%) were involved in a true maltreatment report within one year of the initiation of services. There were 12,255 children who began receiving protective services (PS) during that same time period, and of those children, 505 (4%) experienced a true report of maltreatment within one year. Of the 193 children who began receiving intensive family services (IFS), 30 (16%) children were involved in a true report within a year of the initiation of services³. For children in receipt of supportive services, the percentage of children who were abused or neglected within one year of the initiation of services decreased by one percentage point between SFY 2007 and SFY 2008 while the percentage of children who were abused or neglected within one year who were in receipt of protective services remained the same. The percentage decreased from 19 percent to 16 percent between the two SFYs for children in receipt of IFS.

Chart 3: Percentage of Children Receiving PS, SS or IFS Services who were Abused or Neglected within One Year of Initiation of Services

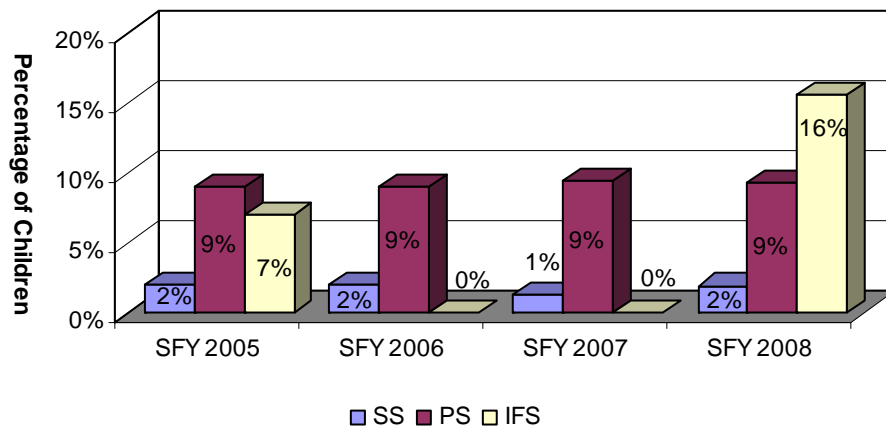


³ Generally, families who receive supportive services have less severe problems, while families receiving intensive family services are, by definition, in imminent risk of having one or more child(ren) placed in foster care or already have children in foster care. Protective services families fall somewhere between those two extremes.

Percentage of Children Receiving Supportive Services, Protective Services or Intensive Family Services who Entered Care within One Year of Initiation of Services

Of the 840 children who began receiving supportive services between July 2006 and June 2007, only 16 (2%) entered foster care within one year of the initiation of those services. Of the 12,255 children who began receiving protective services during that same time period, 1,140 (9%) entered foster care within one year of initiation of services. Thirty of the 193 (16%) children who began receiving intensive family services entered foster care within one year of receiving those services.

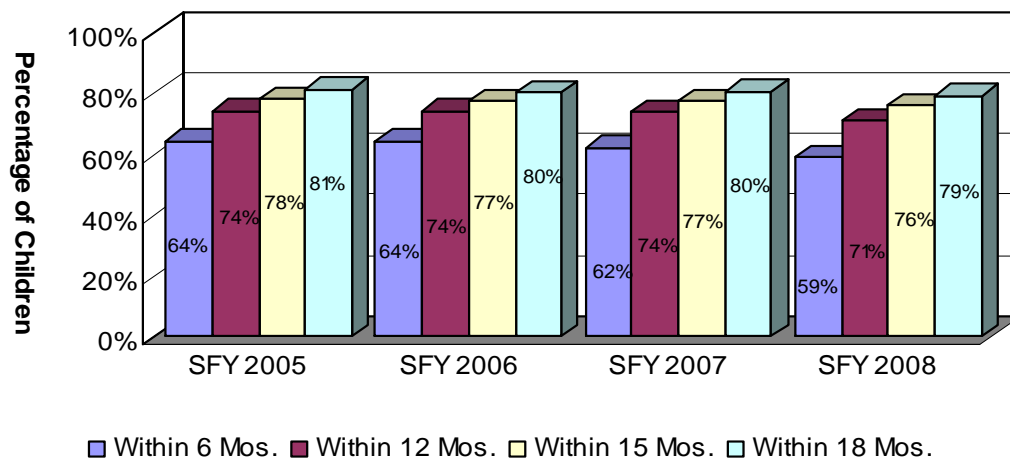
Chart 4: Percentage of Children Receiving SS, PS or IFS Services who Entered Foster Care within One Year of Initiation of Services



Percentage of Children Entering Foster Care who Returned Home within Eighteen Months

There were 3,787 children who entered foster care between January 2006 and December 2006. Of that number, 2,225 children (59%) returned home within six months, 2,697 children (71%) returned home within 12 months, 2,882 children (76%) returned home within 15 months and 3,005 children (79%) returned home within 18 months of entering foster care.

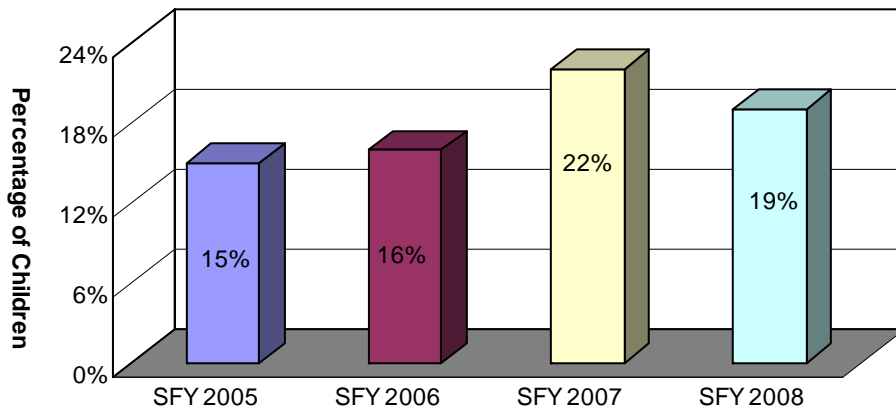
Chart 5: Percentage of Children Entering Foster Care who were Returned Home within Eighteen Months



Percentage of Children in Foster Care who Experienced more than Three Placements within Eighteen Months of Entering Care

Of those same 3,787 children who entered foster care between January 2006 and December 2006, 712 children (19%) experienced more than three placements within 18 months of entering care. This was three percentage points lower than SFY 2007 (22%).

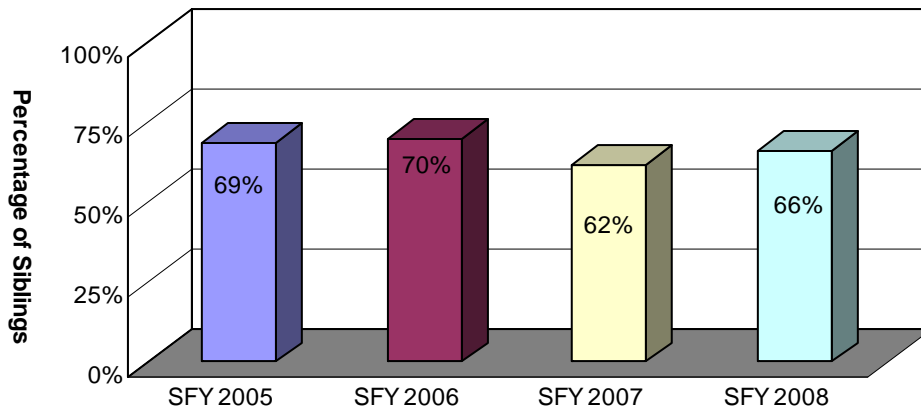
Chart 6: Percentage of Children in Foster Care who Experienced More than Three Placements within Eighteen Months of Entering Care



Percentage of Siblings in Foster Care who are Placed Together

At the end of SFY 2008, 1,741 children in foster care also had siblings in foster care. Of those children, 1,156 (66%) were placed with at least one of their siblings, while 793 (46%) were placed with all of their siblings. These figures do not exclude children who have been placed separately for valid reasons such as safety issues or court orders.

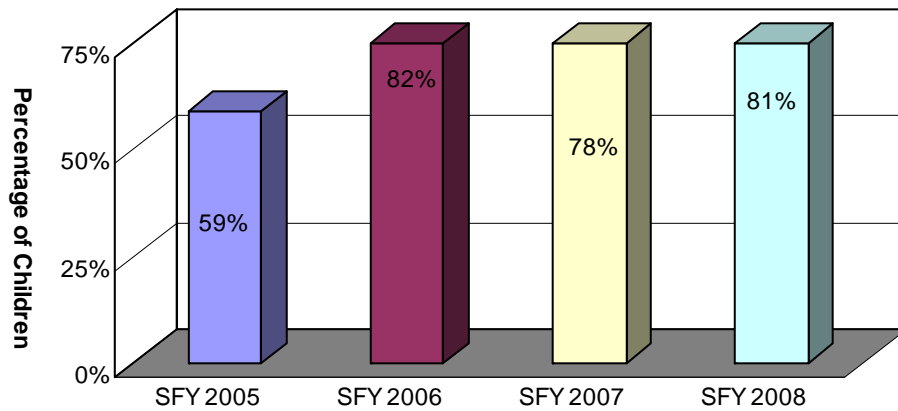
Chart 7: Percentage of Siblings in Foster Care who are Placed Together



Percentage of Children Living with Adoptive Families within Twelve Months of Termination of Parental Rights

There were 326 children with the goal of adoption whose parents had their parental rights terminated between July 2006 and June 2007. This represents a decrease of 12 children when compared to SFY 2007 (338). Of those 326 children, 263 (81%) were placed with an adoptive family within 12 months of the termination of parental rights, resulting in a three percentage point increase from SFY 2007 (78%).

Chart 8: Percentage of Children Living with Adoptive Families within 12 Months of Termination of Parental Rights



Children Placed in Pre-adoptive Homes whose Adoptions were Finalized within Twelve Months of Entering Placement

There were 250 children who were placed in pre-adoptive homes between July 2006 and June 2007, a 17 percent increase from the previous year (214). Of those, 189 children or 76 percent had finalized adoptions within 12 months of being placed in their pre-adoptive home.

Of the children who were placed in a pre-adoptive home during SFY 2008, 15 children (6%) experienced a disruption. The percentage of children who experienced disruptions decreased by six percentage points between SFY 2007 and SFY 2008. A disruption occurs when a child has been placed in a pre-adoptive home and the family or the child has decided not to proceed with the adoption and the child leaves the pre-adoptive home.

Of the 250 children placed in pre-adoptive homes, the adoption was still pending finalization 12 months after the placement for 56 children.

Table 1: Children Placed in Pre-adoptive Homes during SFY 2008 whose Adoptions were Finalized within 12 Months of Entering Placement

Status	SFY 2007		SFY 2008	
	Number	Percentage	Number	Percentage
Finalized Adoption	143	67%	189	76%
Disrupted Adoptive Placements	25	12%	15	6%
Children with a Disruption who were Re-placed in a Pre-adoptive Home	17	8%	10	4%
Still Pending at the End of the Year	63	29%	56	22%

PART II: COMPLIANCE INDEX

The Division has set compliance measures with guidance from the Joint Interim Committee on Children and Youth. An index is compiled by reporting the level of compliance with these measures.

Goal Compliance Measure

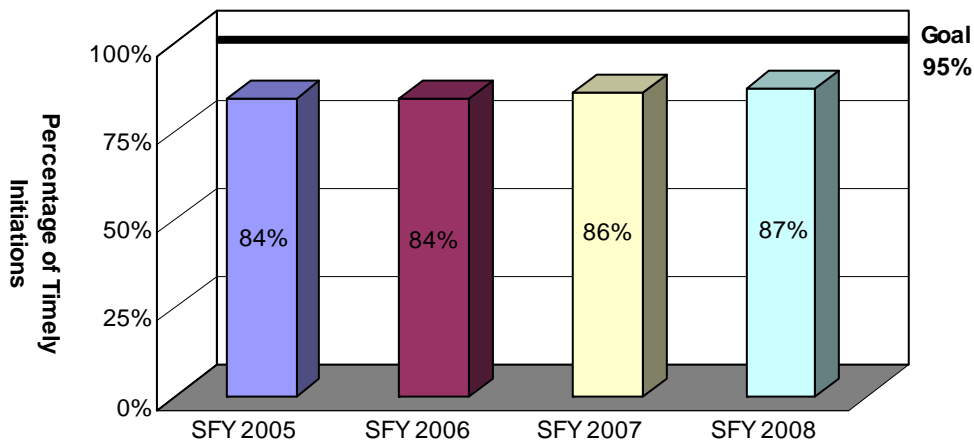
- 95%** ***Timely Initiation of Child Maltreatment Assessments.*** The investigator interviews or observes the victim child outside the presence of the alleged offender within 24 hours of any alleged severe maltreatment or within 72 hours otherwise.
- 90%** ***Timely Completion of Child Maltreatment Assessments.*** A determination must be made regarding an allegation of child maltreatment within 30 days of receipt of the allegation.
- 95%** ***24-Hour Initial Health Screenings.*** The screening is conducted within 24 hours after removal from the home on children who enter foster care due to an allegation of severe maltreatment, or if there is evidence of acute illness or injury.
- 95%** ***72-Hour Initial Health Screenings.*** This screening is conducted within 72 hours after removal from the home on all children who enter foster care who are not subject to the 24 hour screening.
- 95%** ***Comprehensive Health Assessments.*** Within 60 days of a child's entering foster care, an evaluation of their physical and mental health status must be completed.
- 320 Homes** ***Foster Home Recruitment.*** DCFS must ensure a sufficient number and variety of foster homes are available which meet minimal standards and match the needs and characteristics of foster children.
- 95%** ***Foster Home Re-evaluations.*** DCFS must re-evaluate, at least annually, each foster home's ability to care for children.
- 85%** ***Required Visits Made by Worker.*** DCFS must provide data on the percentages of required weekly visits made by DCFS workers to children in foster care.

Timely Initiation of Child Maltreatment Assessments

There were 27,672 referrals for child maltreatment assessments during SFY 2008. Of that number, 21,319 (77%) referrals were assigned to DCFS for investigation. Of those referrals assigned to DCFS, 18,463 assessments were initiated within the required period. This resulted in a compliance rate of 87 percent, which was one percentage point higher than SFY 2007 (86%).

The Crimes Against Children Division (CACD) of the Arkansas State Police was responsible for handling the remaining child abuse referrals. CACD was responsible for 5,809 Priority I referrals and 544 Priority II referrals during SFY 2008. Of the Priority I referrals, 5,762 (99%) were initiated in a timely manner. Of the Priority II referrals, 530 (97%) were initiated in a timely manner.

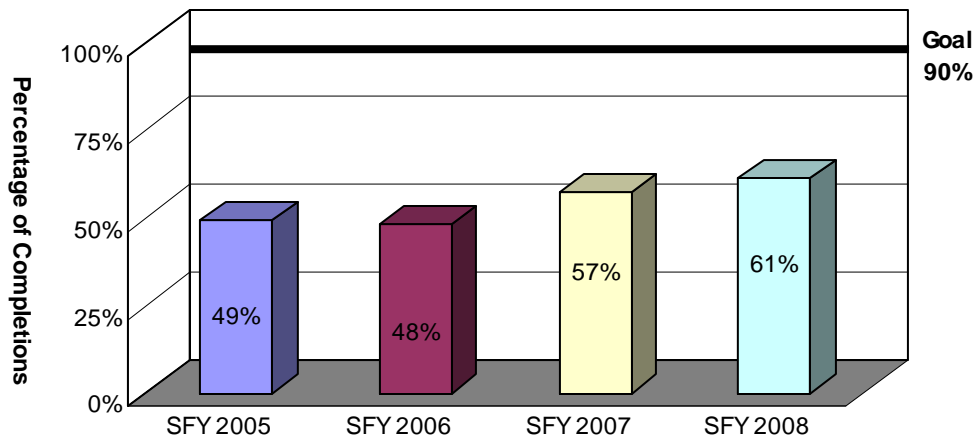
Chart 9: Timely Initiation of Child Maltreatment Assessments



Timely Completion of Child Maltreatment Assessments

Of the 21,319 assessments initiated by DCFS during SFY 2008, 12,894 were completed within the required 30-day period. This resulted in a compliance rate of 61 percent, an increase of four percentage points from SFY 2007 (57%) but below the goal of 90 percent.

Chart 10: Timely Completion of Child Maltreatment Assessments

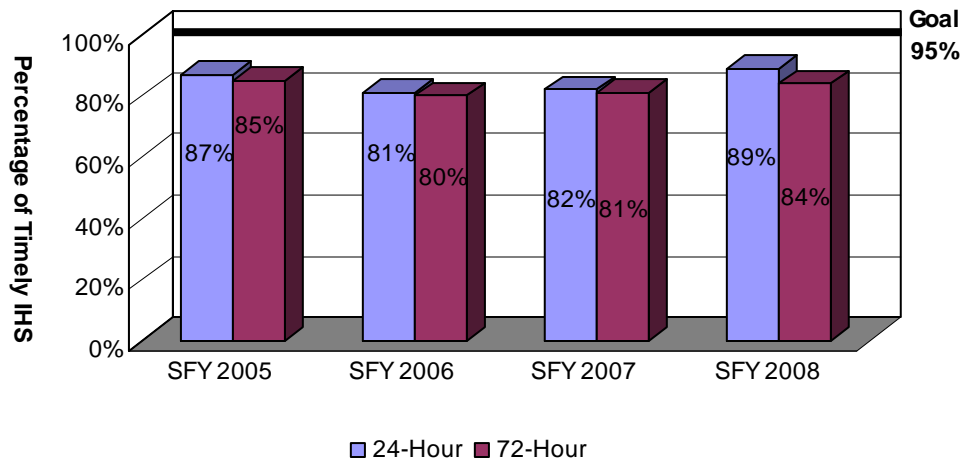


24- and 72-Hour Initial Health Screenings

If a child enters foster care due to an allegation of severe maltreatment or if there is evidence of acute illness or injury, an initial health screening must be conducted within 24 hours of the child’s removal from the home. Of the 593 children who required the 24-hour health screening during SFY 2008, 530 (89%) received the screening in a timely manner. The compliance rate was seven percentage points higher than what it was for SFY 2007, but below the goal of 95 percent.

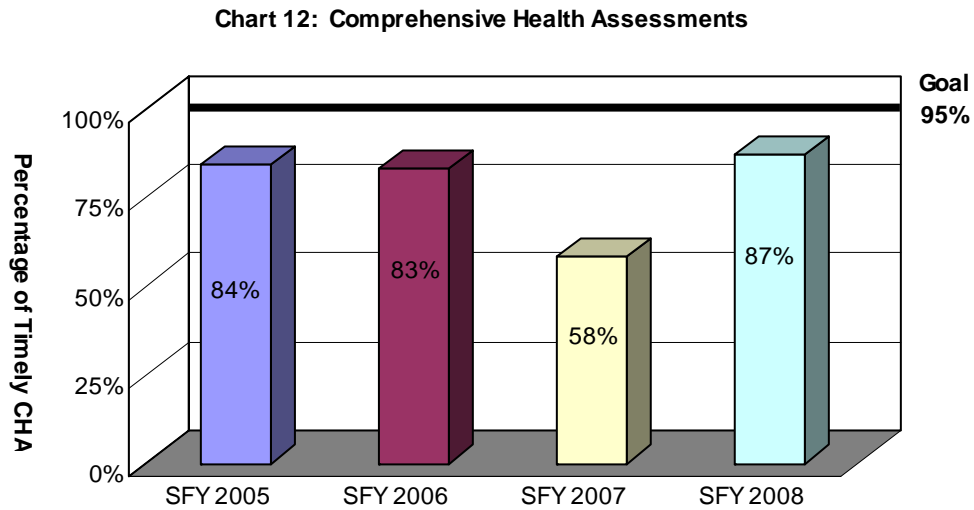
All children entering foster care who do not require the initial 24-hour health screening must undergo an initial health screening within 72 hours of their removal. Of the 2,827 children who required their health screening within 72 hours, 2,386 (84%) received their screenings in a timely manner, three percentage points higher than SFY 2007, but below the goal of 95 percent.

Chart 11: 24- and 72-Hour Initial Health Screenings



Comprehensive Health Assessments

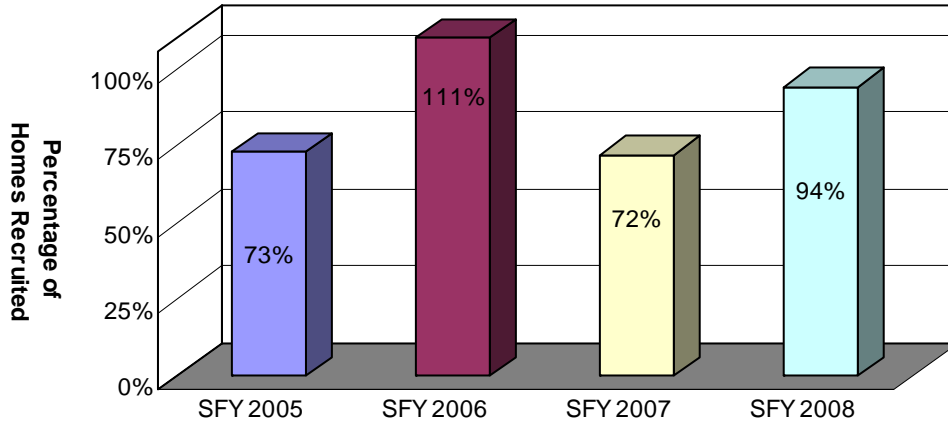
All children who enter foster care must receive a comprehensive health assessment to evaluate their physical and mental health status within 60 days of entering foster care. There were 1,555 children who entered foster care between May 2007 and April 2008 who remained in care for at least 60 days. Of those children, 1,356 received their comprehensive health assessment within 60 days of entering care. The resulting compliance rate was 87 percent, which was an increase of 29 percentage points from SFY 2007 but below the goal of 95 percent.



Foster Home Recruitment

There were 302 new foster homes recruited during SFY 2008. This was 18 foster homes fewer than the goal of 320 new homes for the year. This number resulted in a compliance rate of 94 percent, 22 percentage points higher than SFY 2007 (72%).

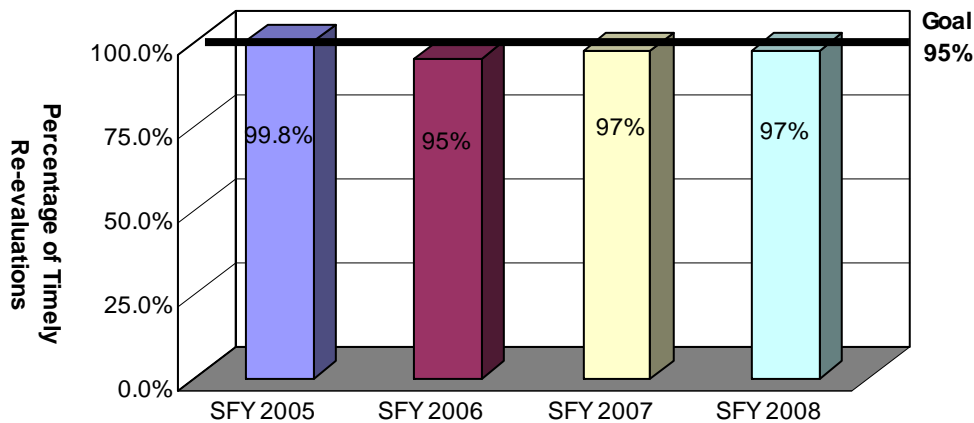
Chart 13: Foster Home Recruitment



Foster Home Re-evaluations

On an annual basis, at a minimum, DCFS is required to re-evaluate each foster home's ability to care for its children. Of the 1,045 DCFS foster homes that were active at the end of the year, 1,018 had a currently completed re-evaluation. The resulting compliance rate was 97 percent, the same as SFY 2007 and above the goal of 95 percent compliance.

Chart 14: Foster Home Re-evaluations

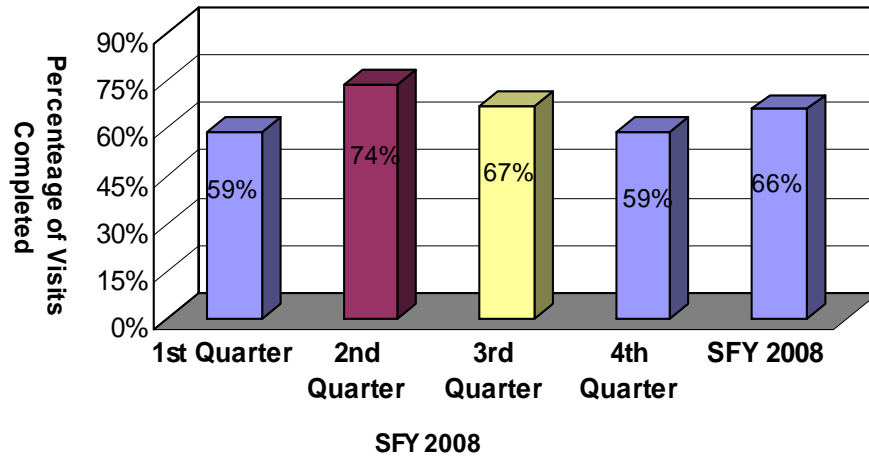


Required Visits Made by Worker

DCFS acknowledges the importance of worker contact with children in foster care and believes that these visits should be in the home as often as possible. However, DCFS also recognizes that face-to-face visits in other locations can also meet good practice objectives. Consequently, the measurement of required monthly visits with children in care considers face-to-face visits in any setting as compliant.

During SFY 2008, the percentage of children who received monthly visits during the year averaged 66 percent.

Chart 15: Required Foster Care Monthly Visits Made by Worker



PART III: DESCRIPTION OF POPULATION AND SERVICES

This section describes the number and status of maltreatment assessments, children who were served in foster care and children who were provided adoption services.

Section I outlines the characteristics of children, such as age, gender and ethnicity, in true maltreatment reports. Additionally, this section describes the types of allegations in maltreatment reports.

Section II describes the foster care population, specifically the characteristics of children in foster care, entries and exits of children in foster care, reasons children came into care, lengths of stay for children in foster care and in relative care, placements of children in foster care and the number of placements children experience while in care.

Section III focuses on adoption data such as the characteristics of children available for adoption, current placement of those children, characteristics of children placed in adoptive homes, children whose parents have had their parental rights terminated but have not been placed in an adoptive home, finalized adoptions and adoption subsidies.

APPENDIX F provides an area and county breakdown for Foster Care, Protective Service and Supportive Service cases.

Part III: Description of Population and Services
Section I: True Child Maltreatment Reports

Child Maltreatment Assessments

There were 27,672 maltreatment assessments received during SFY 2008, a three percent increase from SFY 2007 (26,817). Of those, 6,288 reports (23%) were found to be true, below the national percentage (25.2%)⁴. There were 8,834 victim children involved in the 6,288 true reports during SFY 2008. (See APPENDIX A for area and county breakdown).

Table 2: Child Maltreatment Assessments

	Total Assessments	True Assessments	Percent True
SFY 2008	27,672	6,288	23%
SFY 2007	26,817	6,946	26%
SFY 2006	25,178	6,277	25%

⁴ Source: Child Maltreatment 2005, Reports from the States to the National Child Abuse and Neglect Data System, U.S. Department of Health and Human Services, Administration for Children and Families, Administration on Children, Youth and Families, Children's Bureau.

Characteristics of Children in True Maltreatment Reports

As indicated above, there were 8,834 victim children involved in true reports during SFY 2008. This number represented a 10 percent decrease from SFY 2007 (9,796 children)⁵.

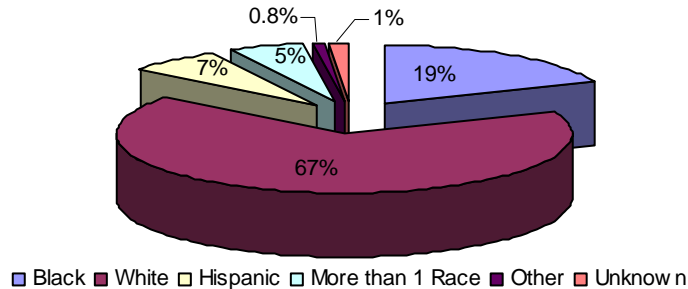
Table 3: Characteristics of Children in True Maltreatment Reports SFY 2008

Age	Gender	White	Black	Asian	AIAN	NAPI	Hispanic	More Than 1 Race	Total
0 to 1	Female	254	88	0	3	0	22	25	392
	Male	259	95	0	2	2	37	35	430
2 to 5	Female	667	174	4	3	0	63	51	962
	Male	724	190	5	0	5	94	72	1,090
6 to 11	Female	1,097	258	1	4	8	111	77	1,556
	Male	946	256	6	2	7	74	72	1,363
12 to 15	Female	840	235	5	0	3	97	59	1,239
	Male	463	116	3	0	1	24	34	641
16 to 18	Female	484	154	5	1	2	54	37	737
	Male	206	70	1	0	0	14	13	304
18+	Female	2	0	0	0	0	1	0	3
	Male	0	0	0	0	0	0	1	1
Total*		5,942	1,636	30	15	28	591	476	8,718

*Demographic information was not entered into CHRIS for 116 children.

The chart below shows that 67 percent of the children involved in true maltreatment reports were white, while 19 percent were black and seven percent were Hispanic. The number of white children increased by one percentage point from SFY 2007, while the number of black children decreased by one percentage point from SFY 2007.

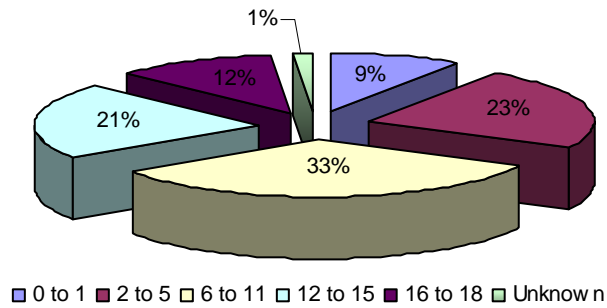
Chart 16a: Ethnicity of Children in True Maltreatment Reports



⁵ The table above, and each subsequent demographic table, divides counts of children by race and ethnicity, into the following categories: "Hispanic," "More than One Race," "Asian" (includes Indonesian, Cambodian, Hmong and Vietnamese), "AIAN" (includes Native American, Alaskan Native and American Indian) and "NAPI" (includes Native Hawaiian and other Pacific Islanders).

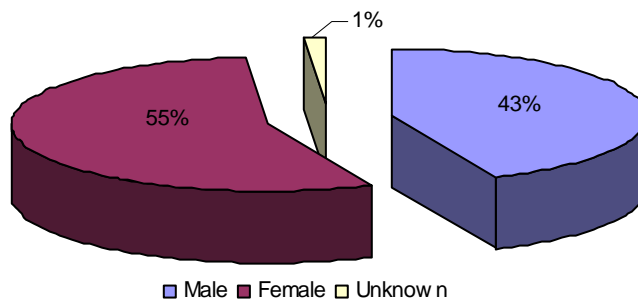
The following chart shows that children between the ages of six and 11 represented the highest number of children involved in the 6,288 true reports during SFY 2008 (33%). These percentages are similar to the ones from SFY 2007.

Chart 16b: Ages of Children Involved in True Maltreatment Reports



Fifty-five percent of the children involved in true reports were female, while 43 percent were male. These are the same percentages from SFY 2007.

Chart 16c: Gender of Children In True Maltreatment Reports



Children Involved in Allegations of True Maltreatment Reports

The majority of the 8,834 children in true maltreatment reports were involved in neglect allegations (81%) during SFY 2008, followed by physical abuse allegations (39%) and sexual abuse allegations (37%)⁶.

Table 4: Percentage of Children Involved in True Allegations of Maltreatment SFY 2008

	SFY 2007		SFY 2008	
Neglect	7,313	75%	7,187	81%
Physical Abuse	3,177	32%	3,426	39%
Sexual Abuse	3,130	32%	3,255	37%

⁶ The total number represented will outnumber the total children involved in true maltreatment reports because a child can be involved in more than one allegation.

**Part III: Description of Population and Services
Section II: Foster Care**

Characteristics of Children in Foster Care

There were 6,974 children in foster care during SFY 2008, a decrease from SFY 2007 (7,194 children). This count includes children who remained in care from the previous year as well as children who came into care during SFY 2008. (See APPENDICES B, C and D for an area and county breakdown of demographic information.) The table below describes the characteristics of the children in foster care during the most recent state fiscal year.

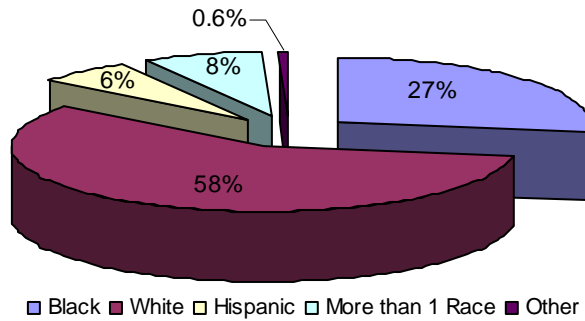
**Table 5: Characteristics of Children in Foster Care During the Year
SFY 2008**

Age	Gender	White	Black	Asian	AIAN	NAPI	Hispanic	More Than 1 Race	Total
0 to 1	Female	294	157	0	3	1	43	29	527
	Male	276	135	1	3	1	44	57	517
2 to 5	Female	479	219	2	0	0	48	70	818
	Male	514	217	0	3	1	80	91	906
6 to 11	Female	513	228	2	0	0	55	57	855
	Male	544	241	3	2	0	57	65	912
12 to 15	Female	375	191	1	0	0	37	44	648
	Male	350	159	3	1	0	17	55	585
16 to 18	Female	310	134	5	1	0	21	38	509
	Male	214	103	1	1	0	15	20	354
18+	Female	100	61	1	0	0	7	12	181
	Male	75	54	2	0	1	5	8	145
Total*		4,044	1,899	21	14	4	429	546	6,957

*Demographic information had not been entered into CHRIS for 17 children.

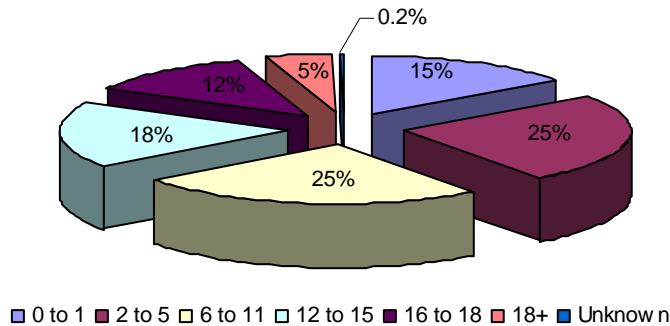
The chart below shows that 58 percent of the children in foster care during the year were white, while 27 percent of the children were black. National data reveal that only 41 percent of the children in the national foster care system were white, while 32 percent of the children were black⁷.

17a: Ethnicity of Children in Care During the Year



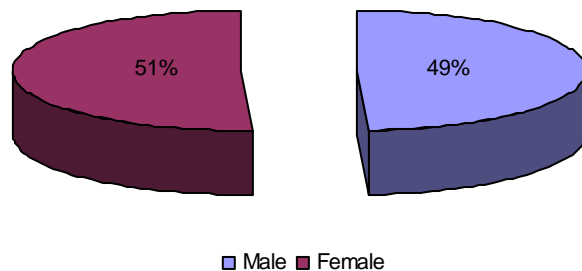
The following chart shows that children between the ages of two to five and six to 11 represented the highest percentages of children who were in care during the year (25% each).

17b: Ages of Children in Care During the Year



The following chart shows the gender of the children in foster care during the year. Fifty-one percent of the children were female, while 49 percent were male.

17c: Gender of Children in Care During the Year



⁷ Adoption and Foster Care Analysis and Reporting System (AFCARS) preliminary data submitted for children in foster care between 10/1/2004 and 9/30/2005 as of September 2006.

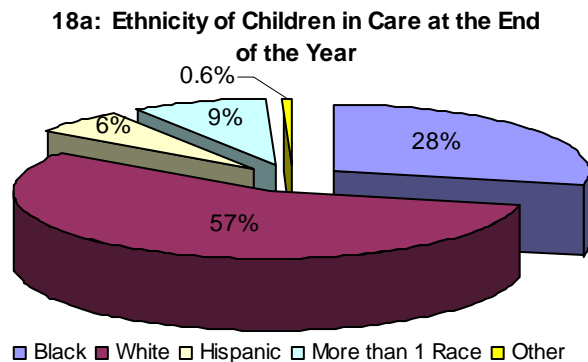
There were 3,694 children in foster care at the end of SFY 2008, a one percent decrease from the 3,729 children in care at the end of SFY 2007. The following table outlines the characteristics of the children in foster care at the end of the latest state fiscal year.

Table 6: Characteristics of Children in Foster Care at the End of the Year SFY 2008

Age	Gender	White	Black	Asian	AIAN	NAPI	Hispanic	More Than 1 Race	Total
0 to 1	Female	151	72	0	2	1	23	20	269
	Male	138	82	0	2	1	22	32	277
2 to 5	Female	219	108	0	0	0	27	38	392
	Male	237	121	0	3	0	24	42	427
6 to 11	Female	246	109	0	0	0	26	29	410
	Male	275	130	0	2	0	33	41	481
12 to 15	Female	204	106	0	0	0	19	26	355
	Male	200	94	1	1	0	10	40	346
16 to 18	Female	195	85	3	0	0	17	26	326
	Male	154	71	0	1	0	8	15	249
18+	Female	41	32	1	0	0	2	5	81
	Male	36	28	2	0	1	3	4	74
Total*		2,096	1,038	7	11	3	214	318	3,687

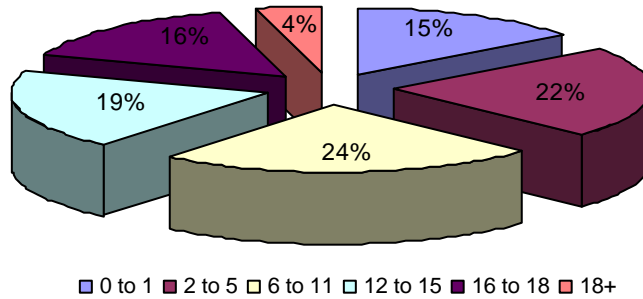
*Demographic information had not been entered into CHRIS for seven children.

The chart below shows that 57 percent of the children in foster care at the end of the SFY 2008 were white, while 28 percent of the children were black. Demographics regarding the ethnicity of children who were in care during the year were similar to the ethnicity of children in care at the end of SFY 2007.



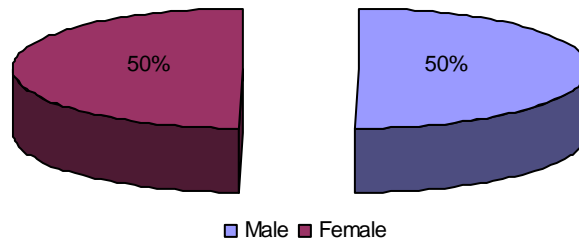
The following chart shows that children between the ages of six and 11 represented the highest percentage of children in care at the end of the year with 24 percent. Children ages two and five years represented the second highest percentage of children who were in care at the end of the year with 22 percent.

18b: Ages of Children in Care at the End of the Year



The following chart shows the gender of the children in foster care at the end of SFY 2008. These percentages are similar to the ones from the end of SFY 2007.

Chart 18c: Gender of Children in Care at the End of the Year



Entries into Foster Care

During SFY 2008, data showed that 3,754 children entered foster care. This represented a ten percent decrease from the last fiscal year (4,174). The following table outlines the characteristics of children who entered foster care during SFY 2008.

Table 7: Characteristics of Children who Entered Foster Care During the Year SFY 2008

Age	Gender	White	Black	Asian	AIAN	NAPI	Hispanic	More Than 1 Race	Total
0 to 1	<i>Female</i>	242	125	0	3	1	38	21	430
	<i>Male</i>	244	95	0	3	1	43	46	432
2 to 5	<i>Female</i>	251	98	1	0	0	30	36	416
	<i>Male</i>	287	112	0	0	1	50	46	496
6 to 11	<i>Female</i>	297	116	1	0	0	32	26	472
	<i>Male</i>	284	128	3	0	0	25	28	468
12 to 15	<i>Female</i>	218	115	2	0	0	24	21	380
	<i>Male</i>	184	69	3	1	0	8	23	288
16 to 18	<i>Female</i>	148	55	2	0	0	7	18	230
	<i>Male</i>	79	37	1	0	0	9	3	129
Total*		2,234	950	13	7	3	266	268	3,741

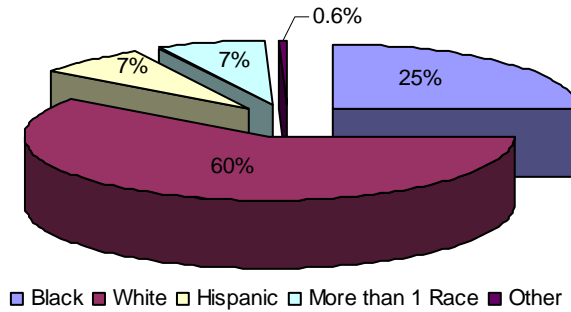
*Demographic information had not been entered into CHRIS for 13 children.

The chart on the following page shows that 60 percent of the children who entered foster care during the year were white, while 25 percent of the children were black. National data indicate that 47 percent of the children who entered care were white and 26 percent were black⁸. Hispanic children represented seven percent of the children who entered foster care, while they represented 18 percent nationally⁹.

⁸ Adoption and Foster Care Analysis and Reporting System (AFCARS) preliminary data submitted for children in foster care between 10/1/2004 and 9/30/2005 as of September 2006.

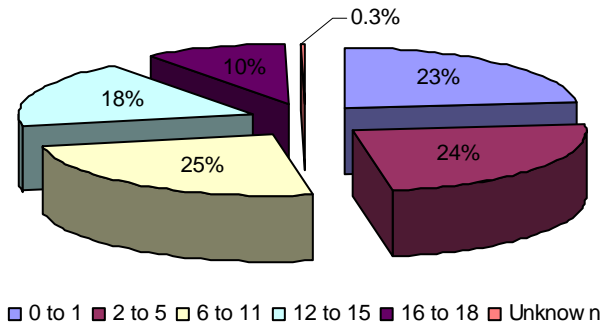
⁹ Adoption and Foster Care Analysis and Reporting System (AFCARS) preliminary data submitted for children in foster care between 10/1/2004 and 9/30/2005 as of September 2006.

Chart 19a: Ethnicity of Children who Entered Care



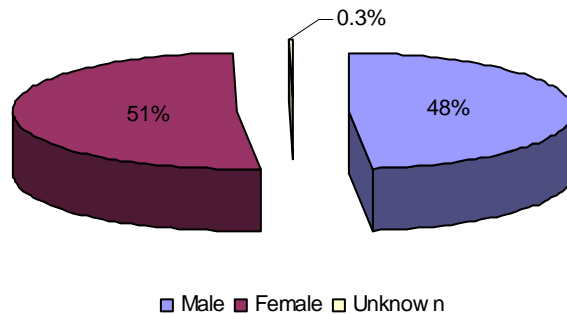
The following chart shows that children between the ages of six and 11 represented the greatest percentage of children (25%) who entered foster care during SFY 2008.

Chart 19b: Ages of Children who Entered Care



The following chart shows the gender of the children who entered foster care during SFY 2008. Fifty-one percent of the children were female and 48 percent were male. These percentages are similar to those in SFY 2007.

Chart 19c: Gender of Children who Entered Care

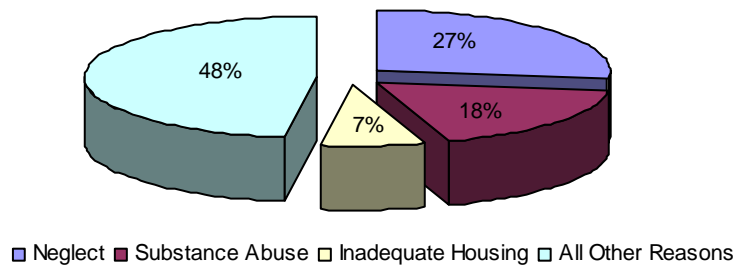


Neglect and substance abuse¹⁰ were the most prevalent reasons children entered foster care. The reasons for entry into foster care for the children who were in foster care during the year (Table 8) were very similar to those who were placed at the end of the year (Table 9).

Table 8: Reasons Children Placed in Foster Care by Age During the Year SFY 2008

	0 to 1	2 to 5	6 to 11	12 to 15	16 to 18	18+	Total
Neglect	652	863	933	575	200	4	3,227
Substance Abuse	578	531	566	386	130	1	2,192
Parent Incarceration	277	400	414	223	66	1	1,381
Physical Abuse	238	295	323	275	116	0	1,247
Child’s Behavior	0	0	110	312	178	3	603
Abandonment	69	96	139	149	103	1	557
Inadequate Housing	169	207	273	156	47	1	853
Caretaker Illness	138	157	185	196	78	3	757
Sexual Abuse	38	130	244	225	57	0	694
Truancy	0	0	55	85	48	2	190
Child’s Disability	18	18	24	18	2	2	82
Parent Death	8	9	19	18	12	0	66
Sex Offender	0	0	18	32	9	1	60
Relinquishment	3	5	8	9	2	0	27
Managed Mental Health	0	0	1	1	1	0	3
Teen Parent in Care	82	12	0	0	0	0	94
Adoption	0	0	0	2	0	0	2
Other	2	3	28	13	5	0	51
Total	2,272	2,726	3,340	2,675	1,054	19	12,086

Chart 20: Most Prevalent Reasons Children Entered Care



¹⁰ Of the 2,192 instances where entry was attributed to substance abuse, substance abuse by parents (2,069 instances) accounted for the largest percentage (94%) as compared to substance abuse by children (6%).

**Table 9: Reasons Children in Foster Care at the End of the Year were Placed in Care
SFY 2008**

	White	Black	Asian	AIAN	NAPI	Hispanic	More Than 1 Race	Total
Neglect	1,038	470	4	6	2	104	146	1,770
Substance Abuse	722	270	2	5	0	63	93	1,155
Parent Incarceration	424	160	0	4	1	62	62	713
Physical Abuse	359	209	3	1	0	36	59	667
Child's Behavior	239	89	2	1	0	11	30	372
Abandonment	163	119	0	0	1	18	30	331
Inadequate Housing	298	170	0	1	0	23	45	537
Caretaker Illness	290	87	1	5	0	18	44	445
Sexual abuse	222	84	2	0	0	15	22	345
Truancy	73	26	0	0	0	5	13	117
Child's Disability	37	11	0	0	0	2	2	52
Parent Death	29	9	0	1	0	0	7	46
Sex Offender	31	6	0	0	0	0	3	40
Relinquishment	10	6	0	0	0	0	4	20
Managed Mental Health	1	1	0	0	0	0	0	2
Adoption	1	1	0	0	0	0	0	2
Teen Parent in Care	19	29	0	0	0	10	4	62
Other	13	18	0	0	0	0	2	33
Total*	3,969	1,765	14	24	4	367	566	6,709

*There are more reasons for entry than children in care because a child may have more than one reason for entry.

Exits from Foster Care

There were 3,721 children who exited foster care during SFY 2008, a four percent decrease from SFY 2007 (3,860 children). The table below outlines the characteristics of the children who left foster care during SFY 2008.

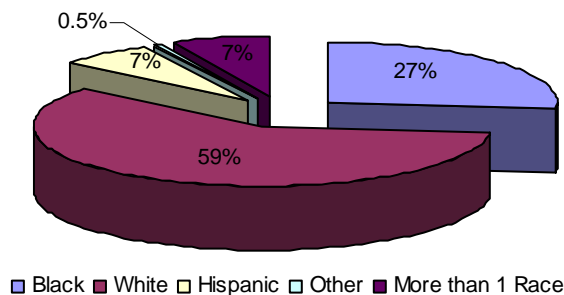
Table 10: Characteristics of Children Exiting Foster Care During the Year SFY 2008

Age	Gender	White	Black	Asian	AIAN	NAPI	Hispanic	More Than 1 Race	Total
0 to 1	Female	153	91	0	1	0	22	11	278
	Male	157	59	1	1	0	26	25	269
2 to 5	Female	285	123	2	0	0	27	37	474
	Male	303	119	0	0	1	59	56	538
6 to 11	Female	290	135	2	0	0	34	33	494
	Male	295	128	3	0	0	28	25	479
12 to 15	Female	198	96	1	0	0	21	22	338
	Male	172	68	2	0	0	8	18	268
16 to 18	Female	189	84	2	1	0	9	20	305
	Male	121	62	1	0	0	9	9	202
18+	Female	16	14	0	0	0	1	4	35
	Male	14	15	0	0	0	1	0	30
Total*		2,193	994	14	3	1	245	260	3,710

*Demographic data had not been entered into CHRIS for 11 children.

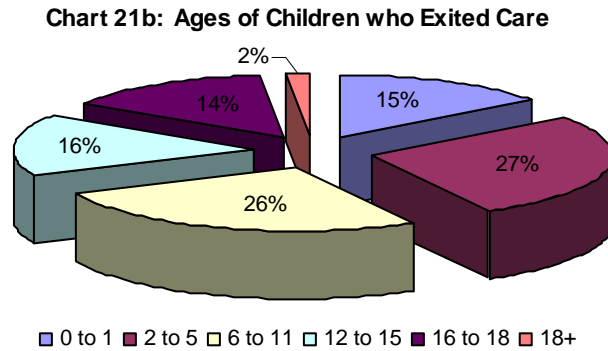
Of the 3,721 children who left foster care during the most recent SFY, 59 percent were white, while 27 percent of the children were black. National data indicate that 45 percent of the children who left foster care during federal fiscal year 2005 were white and 28 percent were black¹¹. The statewide percentages for SFY 2008 were similar to those in SFY 2007.

Chart 21a: Ethnicity of Children who Exited Care

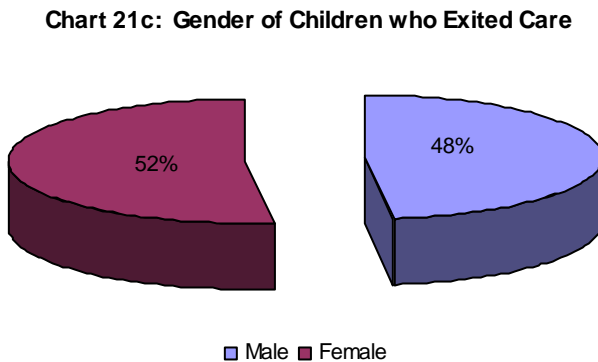


¹¹ Adoption and Foster Care Analysis and Reporting System (AFCARS) preliminary data submitted for children in foster care between 10/1/2004 and 9/30/2005 as of September 2006.

The following chart shows that children between the ages of two and five represented the highest percentage of children (27%) who exited foster care during the year, followed closely by children between the ages of six and 11 (26%).



The following chart shows the gender of the children who left care during the year. Fifty-two percent of the children were female and 48 percent were male.



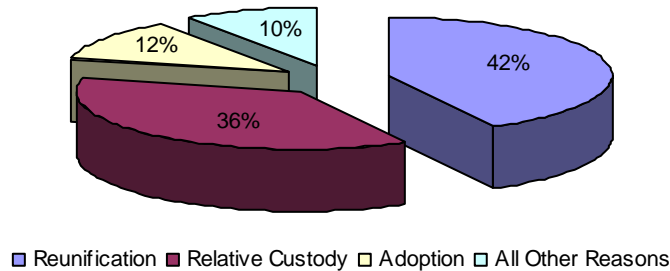
**Table 11: Reasons Children Exited Foster Care by Age
SFY 2008**

Reason	Age						Total
	0 to 1	2 to 5	6 to 11	12 to 15	16 to 18	Over 18	
Reunification	250	433	431	293	168	0	1,575
Relative Custody	231	341	385	249	139	0	1,345
Adoption	48	217	136	38	5	0	444
Child Aged Out	0	0	0	0	163	57	220
Non-Relative Custody	11	17	18	23	17	2	88
Emancipation	0	0	0	0	11	4	15
Death of Child	3	1	0	2	0	1	7
Custody Transfer	4	3	3	1	4	1	16
Total	547	1,012	973	606	507	65	3,710

*Demographic data had not been entered into CHRIS for 11 children.

The most prevalent reason children left foster care during SFY 2008 was reunification (42%), a five percentage point increase from SFY 2007 (37%). The second most prevalent reason was relative custody (36%), a seven percentage point decrease from SFY 2007 (43%). Twelve percent of the children left foster care to adoption. National data indicate the top three most prevalent reasons children left care were reunification (54%), adoption (18%) and relative care (11%)¹².

Chart 22: Most Prevalent Reasons for Children Exiting Care



¹² Adoption and Foster Care Analysis and Reporting System (AFCARS) preliminary data submitted for children in foster care between 10/1/2004 and 9/30/2005 as of September 2006.

Permanency Goals of Children in Foster Care

The Division has two primary goals for children in foster care: safety and permanency. The second of these goals is achieved by setting a permanency goal for each child in foster care. For children in care during the year, more children had the goal to return home than any other goal. National data indicate that the top two most prevalent goals were return home (44%) and adoption (22%)¹³.

**Table 12: Permanency Goals of Children in Foster Care During the Year
SFY 2007 – SFY 2008**

	SFY 2007		SFY 2008		National
Return Home	3,211	45%	3,063	44%	44%
Adoption	930	13%	1,181	17%	22%
Independence	601	8%	764	11%	n/a
Remain at Home	1,280	18%	1,101	16%	n/a
Relative Care	311	4%	313	4%	5%
Guardianship	27	0.4%	48	0.7%	3%
Emancipation	4	0.06%	5	0.07%	6%
Long Term Care	N/A	N/A	N/A	N/A	8%
Not Yet Established	830	12%	499	7%	11%
Total*	7,194	100%	6,974	100%	100%

*Sum of individual percentages may not equal 100% due to rounding.

¹³ Adoption and Foster Care Analysis and Reporting System (AFCARS) preliminary data submitted for children in foster care between 10/1/2004 and 9/30/2005 as of September 2006.

Length of Stay of Children in Foster Care

For SFY 2008, 63 percent of the children in foster care had been in care less than one year. Compared to national data, children in the Arkansas foster care system stay in care a substantially shorter amount of time¹⁴. (See APPENDIX E for an area and county breakdown.)

**Table 13a: Length of Stay of Children in Foster Care
SFY 2008**

	Number	Percentage	National
Less than 30 days	1,242	18%	5%
30-90 Days	1,101	16%	18%
3-6 Months	752	11%	
6-12 Months	1,092	16%	17%
12-24 Months	1,299	18%	21%
24-36 Months	642	9%	12%
36+ Months	846	12%	27%
Total	6,974	100%	100%

**Table 13b: Length of Stay of Children in Relative Care
SFY 2008**

	Number	Percentage
Less than 30 days	30	5%
30-90 Days	57	9%
3-6 Months	67	11%
6-12 Months	142	23%
12-24 Months	195	31%
24-36 Months	76	12%
36+ Months	53	9%
Total	620	100%

**Table 13c: Length of Stay of Children in Foster Care
(Excluding Relative Care)
SFY 2008**

	Number	Percentage
Less than 30 days	1,212	19%
30-90 Days	1,044	16%
3-6 Months	685	11%
6-12 Months	950	15%
12-24 Months	1,104	17%
24-36 Months	566	9%
36+ Months	793	12%
Total*	6,354	100%

¹⁴ Adoption and Foster Care Analysis and Reporting System (AFCARS) preliminary data submitted for children in foster care between 10/1/04 and 9/30/05 as of September 2006.

Number of Placements of Children in Foster Care

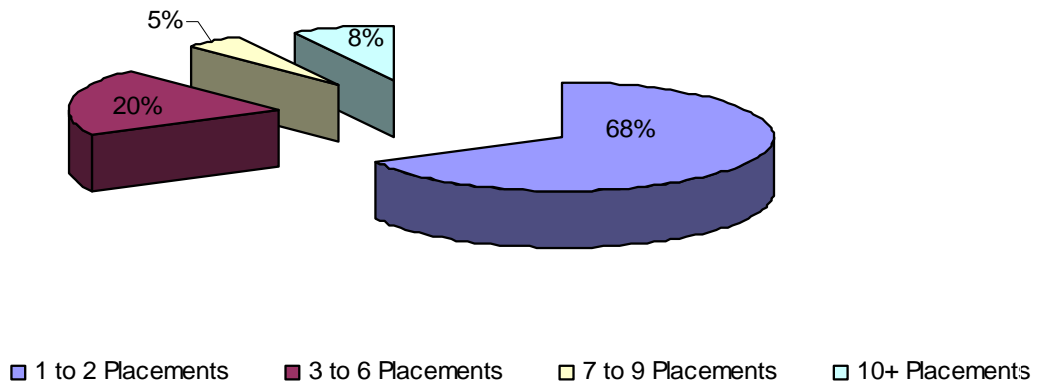
For SFY 2008, 68 percent of the children in care during the year experienced less than three placements. This is the same as SFY 2007.

**Table 14: Number of Placements of Children in Foster Care
SFY 2007 – SFY 2008**

	SFY 2007		SFY 2008	
1-2 Placements	4,918	68%	4,716	68%
3-6 Placements	1,444	20%	1,383	20%
7-9 Placements	342	5%	341	5%
10+ Placements	490	7%	534	8%
Total	7,194	100%	6,974	100%

*Sum of individual percentages may not equal 100% due to rounding.

Chart 23: Number of Placements



Characteristics of Children who Experienced Two or More Placements

There were 3,694 children in care at the end of the year. Of those, 2,066 (56%) children experienced two or more placements while in foster care.

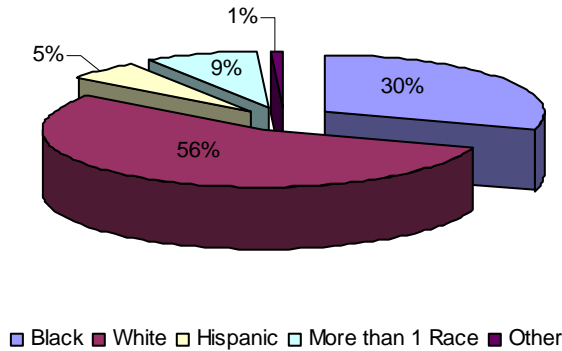
Table 15: Characteristics of Children who Experienced Two or More Placements SFY 2008

Age	Gender	White	Black	Asian	AIAN	NAPI	Hispanic	More Than 1 Race	Total
0 to 1	Female	36	13	0	2	0	7	4	62
	Male	44	22	0	1	0	7	9	83
2 to 5	Female	102	52	0	0	0	10	16	180
	Male	106	52	0	3	0	11	18	190
6 to 11	Female	124	66	0	0	0	14	16	220
	Male	175	76	0	2	0	23	25	301
12 to 15	Female	127	78	0	0	0	14	21	240
	Male	141	76	1	1	0	6	34	259
16 to 18	Female	163	95	2	0	0	10	20	290
	Male	133	83	1	1	1	7	14	240
18+	Female	0	0	0	0	0	0	0	0
	Male	0	0	0	0	0	0	0	0
Total		1,151	613	4	10	1	109	177	2,065

*Demographic data had not been entered into CHRIS for one child.

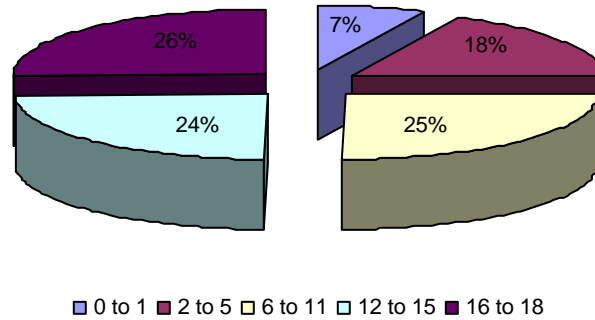
Of the 2,066 children who experienced two or more placements, 56 percent were white and 30 percent were black.

Chart 24a: Ethnicity of Children Who Experienced Two or More Placements



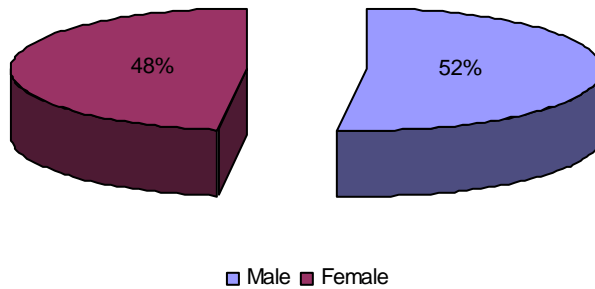
The largest group of children who experienced two or more placements was those between the ages of 16 and 18 (26%), followed closely by children ages six to 11 (25%) and 12 to 15 (24%).

Chart 24b: Ages of Children who Experienced Two or More Placements



Slightly more male children (52%) than female children (48%) experienced two or more placements while in care.

Chart 24c: Gender of Children Who Experienced Two or More Placements



Current Placement of Children in Foster Care

More children who remained in foster care at the end of SFY 2008 were placed in foster homes than in any other placement setting. Fifty-four percent of the children were in DCFS foster homes, while seven percent of the children were placed in therapeutic foster homes.

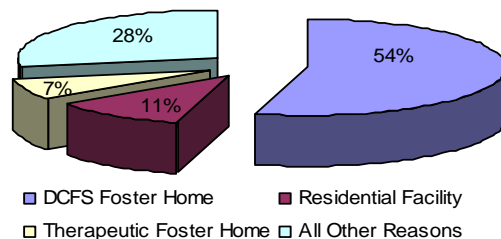
**Table 16: Current Placement of Children in Foster Care
SFY 2008**

Placement	Age						Total
	0 to 1	2 to 5	6 to 11	12 to 15	16 to 18	Over 19	
DCFS Foster Home	436	590	453	260	211	54	2,004
Relative Care	22	32	33	29	8	1	125
Therapeutic Foster Home	2	30	132	73	33	4	274
Adoptive Home*	25	81	65	16	1	0	188
Emergency Shelter	8	5	39	40	25	2	119
Residential Facility	20	20	68	137	118	29	392
Youth Services	0	0	0	9	19	2	30
Runaway	1	0	3	7	58	1	70
Trial Home Visit	29	44	46	19	18	2	158
Hospital/Medical	3	4	3	17	6	0	33
ASAP Residential Treatment	0	0	0	4	12	1	17
Incarceration	0	0	0	5	15	4	24
High Risk Emergency Crisis Center	0	0	2	0	1	0	3
ASAP CRT	0	0	3	6	2	0	11
Acute CRT	0	1	10	15	6	0	32
Sub-Acute CRT	0	1	27	51	27	0	106
Independent Living	0	0	0	1	9	53	63
Temporary Placement	1	9	8	8	3	1	30
ASAP Therapeutic Foster Care	0	0	0	4	4	1	9
Unknown**	3	2	1	0	0	0	6
Total	550	819	893	701	576	155	3,694

*Non-finalized adoptions.

**Unknown due to data entry after report completion.

Chart 25: Current Placement of Children in Care



Characteristics of Children on Runaway Status at the End of the Year

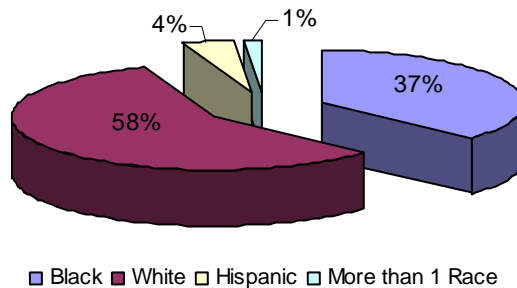
For SFY 2008, 71 children were in runaway status at the end of the year. This was an increase of one child from SFY 2007 (70).

Table 17: Characteristics of Children on Runaway Status at the End of the Year SFY 2008

Age	Gender	White	Black	Asian	AIAN	NAPI	Hispanic	More Than 1 Race	Total
0 to 1	Female	1	0	0	0	0	0	0	1
	Male	0	0	0	0	0	0	0	0
2 to 5	Female	0	0	0	0	0	0	0	0
	Male	0	0	0	0	0	0	0	0
6 to 11	Female	1	0	0	0	0	0	0	1
	Male	1	0	0	0	0	1	0	2
12 to 15	Female	2	2	0	0	0	0	0	4
	Male	2	1	0	0	0	0	0	3
16 to 18	Female	20	15	0	0	0	1	0	36
	Male	22	13	8	0	0	1	0	22
18+	Female	1	0	0	0	0	0	1	2
	Male	0	0	0	0	0	0	0	0
Total		41	26	0	0	0	3	1	71

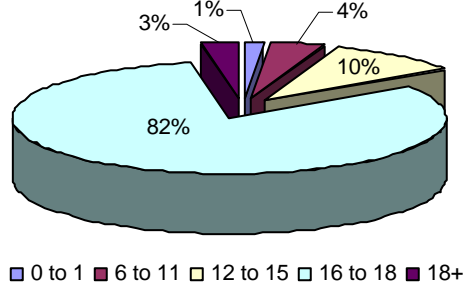
Of the children in runaway status at the end of the year, 58 percent were white and 37 percent were black.

Chart 26a: Ethnicity of Children on Runaway Status at the End of the Quarter



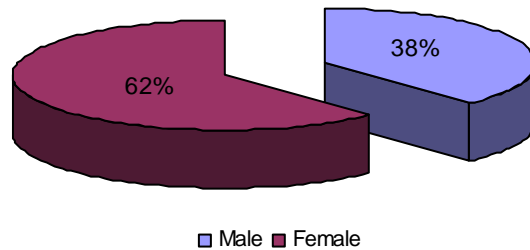
Eighty-two percent of the children who were in runaway status at the end of the year were between the ages of 16 and 18.

Chart 26b: Ages of Children on Runaway Status at the End of the Quarter



There were more female children (62%) than male children (38%) who were in runaway status at the end of the year.

Chart 26c: Gender of Children on Runaway Status at the End of the Quarter



Characteristics of Children in Relative Care

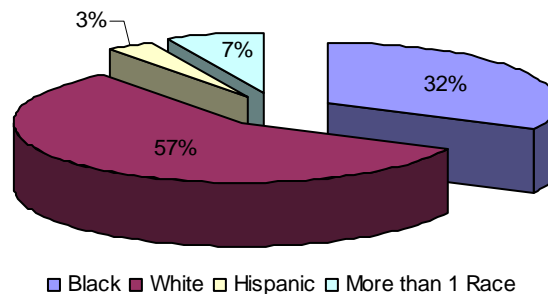
There were 620 children who were in relative care during SFY 2008. The table below outlines the demographics for those children.

**Table 18: Characteristics of Children in Relative Care
SFY 2008**

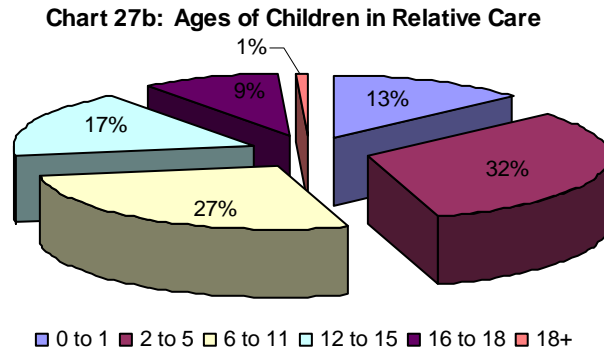
Age	Gender	White	Black	Asian	AIAN	NAPI	Hispanic	More Than 1 Race	Total
0 to 1	Female	23	14	0	0	0	2	2	41
	Male	19	16	0	0	0	3	4	42
2 to 5	Female	47	26	0	0	0	5	8	86
	Male	69	34	0	0	0	5	4	112
6 to 11	Female	57	36	0	0	0	1	10	104
	Male	46	14	0	0	0	0	6	66
12 to 15	Female	37	15	0	0	0	1	3	56
	Male	29	16	0	0	0	0	6	51
16 to 18	Female	21	13	1	0	0	2	0	37
	Male	6	11	1	0	0	2	0	20
18 +	Female	1	3	0	0	0	0	0	4
	Male	0	1	0	0	0	0	0	1
Total		355	199	2	0	0	21	43	620

There is a noteworthy difference between the ethnicity of children in relative care and children in the overall foster care population. White children represented the highest percentage of children (57%) in relative care, similar to SFY 2007. Black children represented thirty-two percent, a decrease from SFY 2007 (34%).

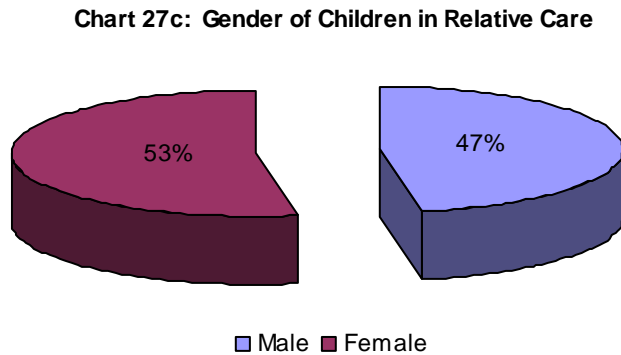
Chart 27a: Ethnicity of Children in Relative Care



Children between the ages of two and five represented the largest age group of children in relative care (32%), followed by children between the ages of six and 11 (27%).



Of the 620 children who were in relative care during the year, 53 percent were female and 47 percent were male.



Part III: Description of Population and Services
Section III: Adoption

Characteristics of Children with the Permanency Goal of Adoption During the Year

There were 1,181 children with the permanency goal of adoption during SFY 2008. The table below outlines the characteristics of these children. This is a 27 percent increase from SFY 2007 (930).

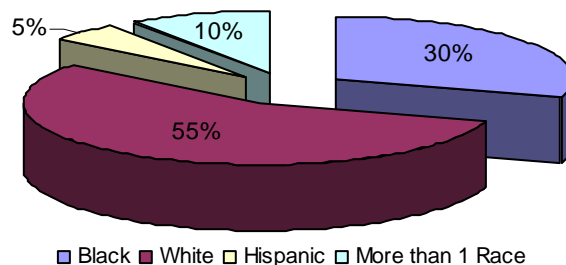
Table 19: Characteristics of Children with the Permanency Goal of Adoption During the Year SFY 2008

Age	Gender	White	Black	Asian	AIAN	NAPI	Hispanic	More Than 1 Race	Total
0 to 1	Female	34	15	0	0	0	2	4	55
	Male	22	21	0	0	0	1	5	49
2 to 5	Female	108	67	1	0	0	6	16	198
	Male	105	56	0	1	0	11	22	195
6 to 11	Female	100	55	1	0	0	12	11	179
	Male	132	51	0	0	0	15	22	220
12 to 15	Female	56	35	0	0	0	5	14	110
	Male	66	34	1	0	0	4	15	120
16 to 18	Female	18	6	0	0	0	1	3	28
	Male	11	10	0	0	0	0	1	22
18 +	Female	0	1	0	0	0	0	0	1
	Male	0	1	0	0	0	0	0	1
Total*		652	352	3	1	0	57	113	1,178

*Demographic data had not been entered into CHRIS for three children.

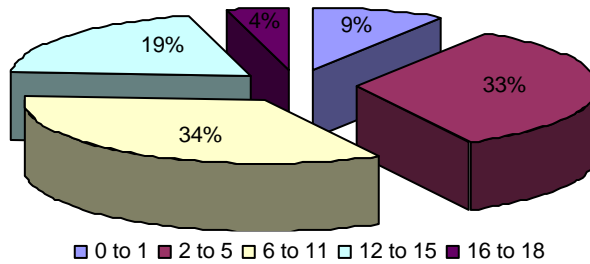
Fifty-five percent of the children whose permanency goal was adoption during the year were white, while 30 percent were black and five percent were Hispanic. These percentages were similar to SFY 2007.

Chart 28a: Ethnicity of Children with a Permanency Goal of Adoption During the Year



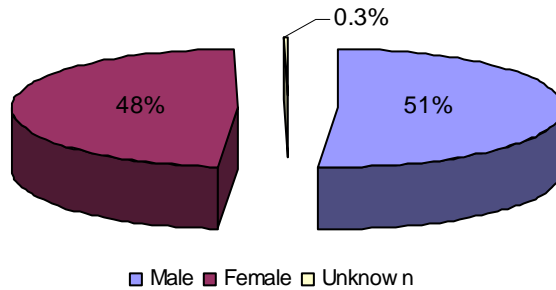
Children between the ages of six and 11 represented 34 percent of the children with a permanency goal of adoption during the year.

Chart 28b: Ages of Children with a Permanency Goal of Adoption During the Year



Of the 1,181 children whose permanency goal was adoption, 51 percent were male and 48 percent were female.

Chart 28c: Gender of Children with a Permanency Goal of Adoption During the Year



Characteristics of Children with the Permanency Goal of Adoption at the End of the Year

There were 884 children whose permanency goal at the end of SFY 2008 was adoption. This was an increase from SFY 2007 (656). The following table outlines the characteristics of those children.

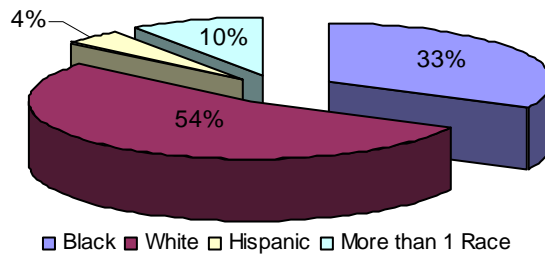
Table 20: Characteristics of Children with the Permanency Goal of Adoption at the End of the Year SFY 2008

Age	Gender	White	Black	Asian	AIAN	NAPI	Hispanic	More Than 1 Race	Total
0 to 1	Female	23	7	0	0	0	0	4	34
	Male	14	18	0	0	0	0	5	37
2 to 5	Female	68	44	0	0	0	4	12	128
	Male	65	43	0	1	0	5	15	129
6 to 11	Female	81	41	0	0	0	10	7	139
	Male	104	39	0	0	0	11	18	172
12 to 15	Female	43	33	0	0	0	4	10	90
	Male	55	32	1	0	0	3	14	105
16 to 18	Female	15	6	0	0	0	1	2	24
	Male	11	10	0	0	0	0	1	22
18 +	Female	0	1	0	0	0	0	0	1
	Male	0	1	0	0	0	0	0	1
Total		479	275	1	1	0	38	88	882

*Demographic data had not been entered into CHRIS for two children.

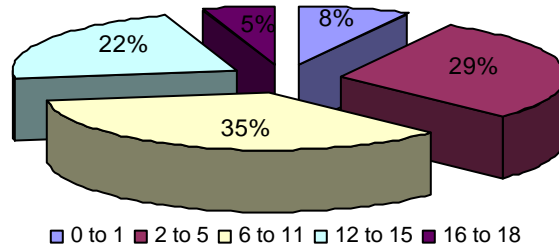
Fifty-four percent of the children with the permanency goal of adoption were white, 33 percent were black and ten percent had more than one ethnicity. These percentages were similar to SFY 2007.

Chart 29a: Ethnicity of Children with Permanency Goal of Adoption at the End of the Year



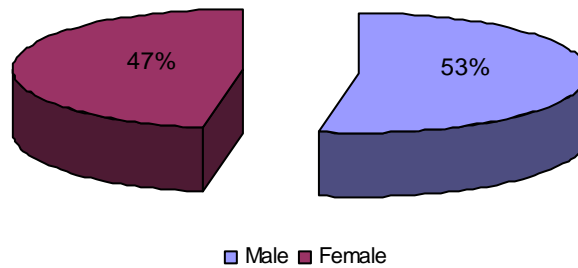
Children between the ages of six and 11 represented the largest group of children with the permanency goal of adoption at the end of the year (35%). Children between the ages of two and five represented the second largest group of children (29%), followed by the 12 to 15 age group (22%).

Chart 29b: Ages of Children with Permanency Goal of Adoption at the End of the Year



There were more male children (53%) than female children (47%) with the permanency goal of adoption at the end of SFY 2008.

29c: Gender of Children with Permanency Goal of Adoption at the End of the Year



Characteristics of Children whose Parents have had Parental Rights Terminated During the Year

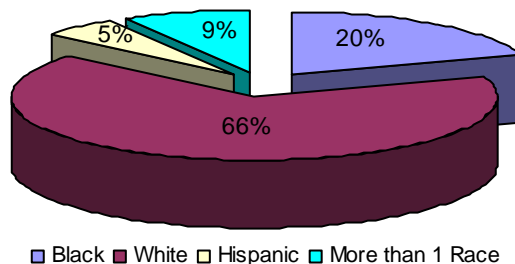
There were 384 children whose parents had their parental rights terminated during SFY 2008. The table below outlines the characteristics of those children.

**Table 21: Characteristics of Children whose Parents have had Parental Rights Terminated During the Year
SFY 2008**

Age	Gender	White	Black	Asian	AIAN	NAPI	Hispanic	More Than 1 Race	Total
0 to 1	Female	27	10	0	0	0	2	2	41
	Male	21	12	0	0	0	0	5	38
2 to 5	Female	53	14	0	0	0	6	3	76
	Male	42	9	0	1	0	5	7	64
6 to 11	Female	37	9	0	0	0	4	2	52
	Male	39	10	0	1	0	1	12	63
12 to 15	Female	16	5	0	0	0	1	0	22
	Male	13	5	0	0	0	0	1	19
16 to 18	Female	6	0	0	0	0	0	1	7
	Male	1	1	0	0	0	0	0	2
Total		255	75	0	2	0	19	33	384

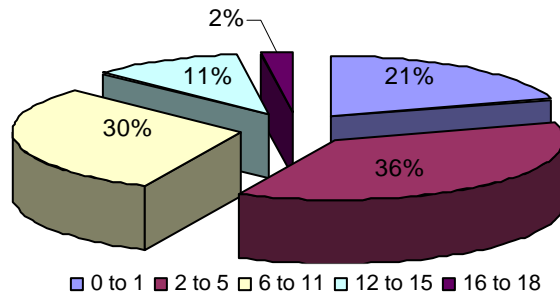
Sixty-six percent of the children whose parents had their parental rights terminated during SFY 2008 were white, while 20 percent of the children were black and five percent were Hispanic.

Chart 30a: Ethnicity of Children whose Parents have had Parental Rights Terminated During the Year



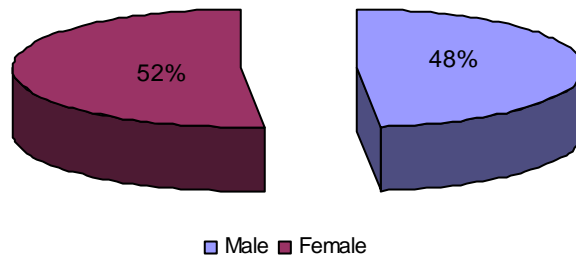
The largest group of children whose parents had their parental rights terminated during SFY 2008 was between the ages of 2 and 5 (36%).

Chart 30b: Ages of Children whose Parents have had Parental Rights Terminated During the Year



There were more female children (52%) than male children (48%) whose parents had their parental rights terminated during SFY 2008.

Chart 30c: Gender of Children whose Parents have had Parental Rights Terminated During the Year



Characteristics of Children Available for Adoption at the End of the Year

There were 527 children available for adoption at the end of SFY 2008. Demographic information for children available for adoption is very similar to previous reports.

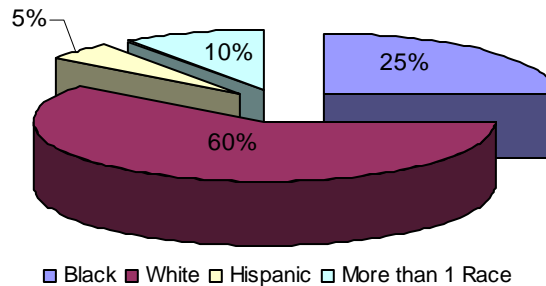
Table 22: Characteristics of Children Available for Adoption at the End of the Year SFY 2008

Age	Gender	White	Black	Asian	AIAN	NAPI	Hispanic	More Than 1 Race	Total
0 to 1	Female	13	5	0	0	0	0	3	21
	Male	9	8	0	0	0	0	3	20
2 to 5	Female	42	21	0	0	0	3	6	72
	Male	34	19	0	1	0	4	5	63
6 to 11	Female	57	17	0	0	0	7	3	84
	Male	71	19	0	0	0	6	14	110
12 to 15	Female	26	16	0	0	0	4	7	53
	Male	43	18	0	0	0	1	8	70
16 to 18	Female	12	2	0	0	0	0	2	16
	Male	10	6	0	0	0	0	1	17
Total		317	131	0	1	0	25	52	526

Demographic data had not been entered into CHRIS for one child.

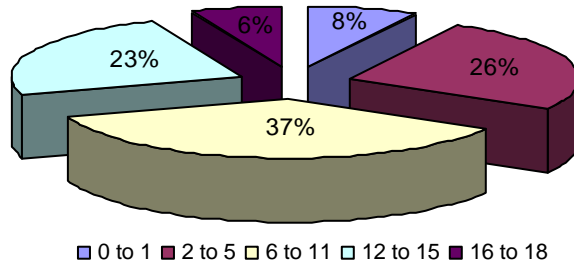
Sixty percent of the children available for adoption at the end of SFY 2008 were white, while 25 percent of the children were black. The percentage of Hispanic children available for adoption was five percent in SFY 2008, which was the same as the previous year and the percentage of black children increased from 23 percent in SFY 2007 to 25 percent in SFY 2008.

Chart 31a: Ethnicity of Children Available for Adoption at the End of the Year



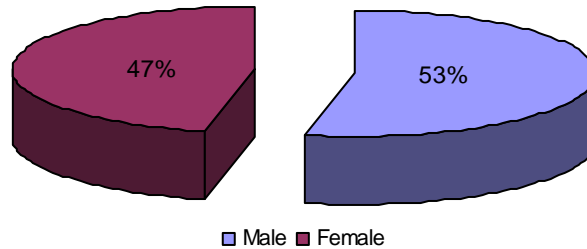
There were more children between the ages of six and 11 (37%) who were available for adoption at the end of SFY 2008 than any other group of children. These percentages were similar to SFY 2007.

Chart 31b: Age of Children Available for Adoption at the End of the Year



More male children (53%) were available for adoption than female children (47%) at the end of SFY 2008.

Chart 31c: Gender of Children Available for Adoption at the End of the Year



Current Placement of Children Available for Adoption

More children who were available for adoption at the end of the SFY 2008 were placed in DCFS foster homes (43%) than in any other type of placement. The percentage of children in DCFS foster home placements at the end of SFY 2008 decreased by eight percentage points over SFY 2007. Other results were similar to previous reports.

**Table 23: Current Placement of Children Available for Adoption
SFY 2008**

Placement	Number of Children	Percentage
DCFS Foster Home	227	43%
Pre-Adoptive Home	95	18%
Pre-Adoptive Home (Foster Home)	3	0.6%
Therapeutic Foster Home	93	18%
Relative Care	3	0.6%
Residential Facility	61	12%
Hospital/Medical	4	0.8%
Emergency Shelter	7	1%
ASAP Residential Treatment	1	0.2%
ASAP CRT	3	0.6%
Acute CRT	5	1%
Sub-Acute CRT	20	4%
Runaway	1	0.2%
Independent Living	1	0.2%
Temporary Placement	3	0.6%
Total*	527	100%

*Sum of individual percentages may not equal 100% due to rounding.

Characteristics of Children Placed in Pre-adoptive Homes

There were 273 children placed into pre-adoptive homes during SFY 2008. This number represented a twenty-four percentage point decrease from the 357 children placed in pre-adoptive homes during SFY 2007. The characteristics of the children placed during the latest state fiscal year are outlined in the table below.

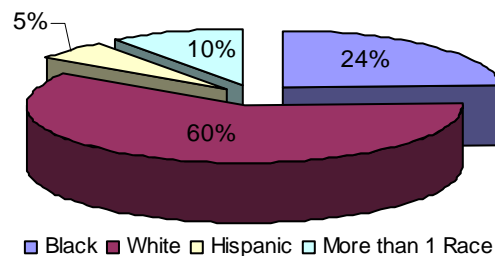
Table 24: Characteristics of Children Placed in Pre-adoptive Homes SFY 2008

Age	Gender	White	Black	Asian	AIAN	NAPI	Hispanic	More Than 1 Race	Total
0 to 1	Female	11	5	0	0	0	0	1	17
	Male	6	3	0	0	0	1	0	10
2 to 5	Female	40	17	1	0	0	0	4	62
	Male	36	14	0	0	0	4	9	63
6 to 11	Female	25	9	1	0	0	4	5	44
	Male	28	14	0	0	0	5	3	50
12 to 15	Female	7	1	0	0	0	0	1	9
	Male	10	2	0	0	0	1	2	15
16 to 18	Female	0	0	0	0	0	0	2	2
	Male	0	0	0	0	0	0	0	0
Total		163	65	2	0	0	15	27	272

Demographic data had not been entered into CHRIS for one child.

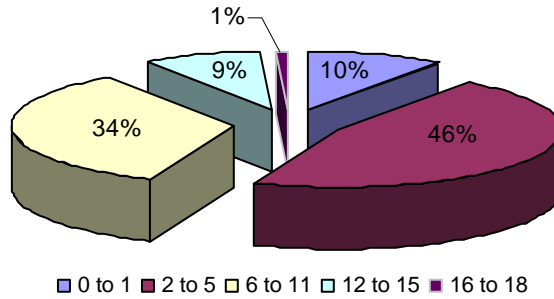
Of the 273 children placed into a pre-adoptive home during the year, 60 percent were white, compared to 73 percent in SFY 2007, and 24 percent were black, compared to 13 percent in SFY 2007.

Chart 32a: Ethnicity of Children Placed in Pre-Adoptive Homes During the Year



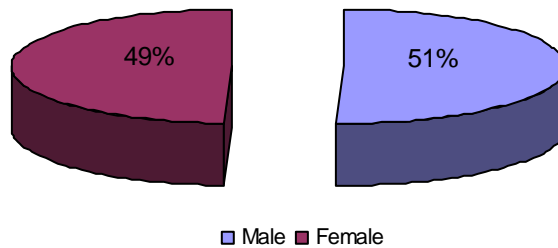
The largest group of children placed into a pre-adoptive home was between the ages of two and five (46%) followed by children between the ages of six and 11 (34%).

32b: Ages of Children Placed in Pre-Adoptive Homes During the Year



Of the 273 children placed into a pre-adoptive home during SFY 2008, 51 percent were male and 49 percent were female.

32c: Gender of Children Placed in Pre-Adoptive Homes During the Year



Children not Placed in Pre-adoptive Homes whose Parents have had Parental Rights Terminated

As of the end of SFY 2008, 430 children whose parents' parental rights were terminated had not been placed in a pre-adoptive home. This number was derived by subtracting the number of children placed in an adoptive home as of the end of the year (97) from the number of children available for adoption at the end of the year (527).

Special Needs

There were 166 children with special needs who were placed in a pre-adoptive home during SFY 2008¹⁵. Children with special needs are generally defined as Caucasian children over the age of nine, African American children who are two years old or older, or children who are members of a sibling group of three or more that are to be placed together with his or her siblings. The definition of special needs children also includes those who have severe medical or psychological needs that require ongoing treatment.

**Table 25: Children with Special Needs Placed in Pre-adoptive Homes
SFY 2008**

Special Need Condition	Number of Children
Race	164
Age	151
Member of sibling group	82

¹⁵ This number does not take into account children with severe medical and psychological needs because this data is not available in CHRIS (AR Children's Reporting and Information System). As enhancements are made to the data system to capture this information, the data will be provided in future reports.

Characteristics of Children with Finalized Adoptions

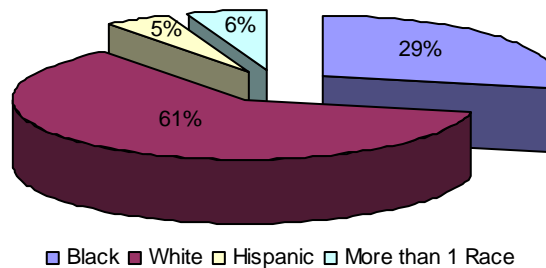
There were 449 children whose adoption was finalized during SFY 2008. This represented an increase from SFY 2007 (379). The characteristics of those children are outlined in the following table.

**Table 26: Characteristics of Children with Finalized Adoptions
SFY 2008**

Age	Gender	White	Black	Asian	AIAN	NAPI	Hispanic	More Than 1 Race	Total
0 to 1	Female	19	8	0	0	0	0	0	27
	Male	15	5	0	0	0	1	0	21
2 to 5	Female	57	29	0	0	0	5	6	97
	Male	72	30	1	0	0	7	10	120
6 to 11	Female	39	29	0	1	0	2	6	77
	Male	39	15	0	0	0	4	2	60
12 to 15	Female	15	6	0	0	0	1	0	22
	Male	11	6	0	0	0	1	0	18
16 to 18	Female	4	0	0	0	0	0	1	5
	Male	2	0	0	0	0	0	0	2
Total		273	128	1	1	0	21	25	449

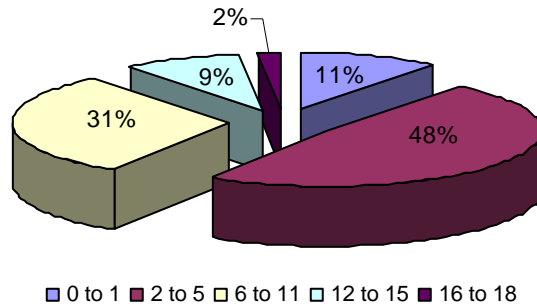
Of the children whose adoption was finalized during SFY 2008, 61 percent were white, 29 percent were black and five percent were Hispanic.

**33a: Ethnicity of Children with Finalized Adoptions
During the Year**



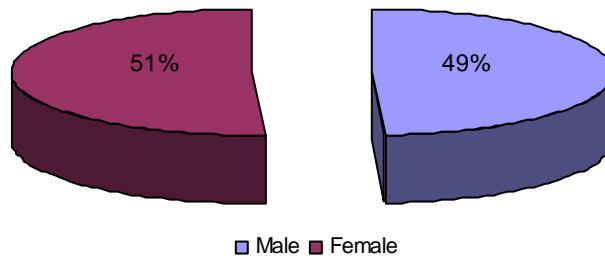
Children between the ages of two and five represented the largest group of children (48%) whose adoption was finalized during SFY 2008, followed by children between the ages of six and 11 (31%).

Chart 33b: Ages of Children with Finalized Adoptions During the Year



Fifty-one percent of the children whose adoption was finalized during SFY 2008 were female and 49 percent of the children were male.

Chart 33c: Gender of Children with Finalized Adoptions During the Year



Subsidized Adoptions

There were 382 children who began receiving adoption subsidies during SFY 2008. Of those, 319 children were receiving federally-funded subsidies, while 63 were receiving state-funded subsidies. In SFY 2007, 292 children received adoption subsidies, 249 federally-funded subsidies and 43 state-funded subsidies.

Characteristics of Children who Receive Adoption Subsidies

There were 3,342 children who received adoption subsidies during SFY 2008. This was an increase of 11 percent from SFY 2007 (3,017). The following table outlines the characteristics of those children.

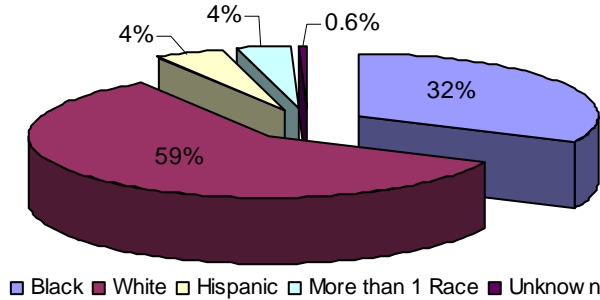
**Table 25: Characteristics of Children Receiving Adoption Subsidies
SFY 2008**

Age	Gender	White	Black	Asian	AIAN	NAPI	His-panic	More Than 1 Race	Total
0 to 1	<i>Female</i>	14	7	0	0	0	0	1	22
	<i>Male</i>	10	4	0	0	0	0	0	14
2 to 5	<i>Female</i>	140	57	2	0	0	18	16	233
	<i>Male</i>	152	79	2	0	0	20	13	266
6 to 11	<i>Female</i>	379	215	1	2	0	35	43	675
	<i>Male</i>	377	189	1	0	0	40	29	636
12 to 15	<i>Female</i>	244	150	1	1	0	17	7	420
	<i>Male</i>	276	146	0	1	0	4	10	437
16 to 18	<i>Female</i>	127	74	1	0	0	8	2	212
	<i>Male</i>	128	80	0	0	0	3	1	212
18+	<i>Female</i>	63	26	0	0	0	2	2	93
	<i>Male</i>	52	48	0	0	0	3	0	103
Total*		1,962	1,075	8	4	0	150	124	3,323

*Demographic data had not been entered into CHRIS for 19 children.

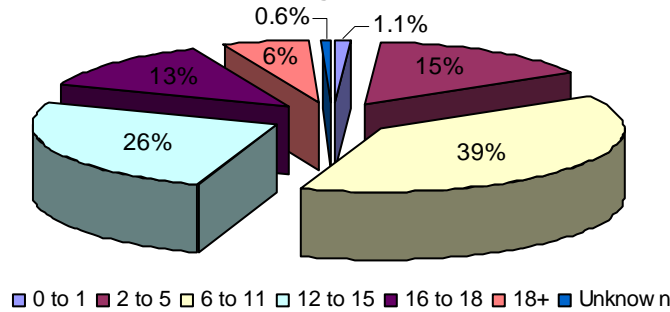
Fifty-nine percent of the children who received adoption subsidies during the year were white, while 32 percent were black.

34a: Ethnicity of Children Receiving Adoption Subsidies During SFY 2005



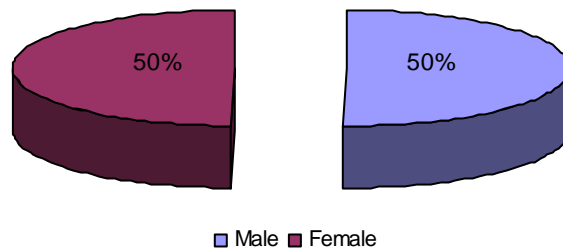
Children between the ages of six and 11 represented the largest group (39%) of children receiving adoption subsidies.

34b: Ages of Children Receiving Adoption Subsidies During the Year



Fifty percent of the children receiving adoption subsidies during the year were male and 50 percent were female.

34c: Gender of Children Receiving Adoption Subsidies During the Year



Adoptive Homes

There were 442 adoptive homes available at the beginning of SFY 2008 and 385 new homes were approved during the year. Of the 827 adoptive homes available for placement during the year, 248 had children placed within them during the year.

**Table 26: Adoptive Homes
SFY 2008**

	Total Adoptive Homes	Non-Foster Adoptive Homes	Foster Adoptive Homes
Homes available for children at beginning of the year	442	169	273
Newly available homes	385	192	193
Homes that had children placed during the year	248	119	129
Home that experienced a disruption	24	19	5
Homes that closed without a placement	124	53	71
Homes available at the end of the year	479	208	271

APPENDICES

APPENDIX A: Child Maltreatment Assessments by Area and County

Area	County	Total	True	True %	Unsub*	Exempt Religion	Exempt UJO	UTL	Unknown
1	Benton (Bentonville)	1,614	370	22.92%	1108	3	10	62	56
1	Carroll (Berryville)	286	69	24.13%	209	0	0	7	1
1	Madison (Huntsville)	157	46	29.30%	97	1	2	3	6
1	Washington (Fayetteville)	1,878	525	27.96%	1082	0	12	59	191
	Area Total	3,935	1,010	26%	2496	4	24	131	254
2	Crawford (Van Buren)	607	124	20.43%	446	0	7	17	10
2	Franklin (Ozark)	150	35	23.33%	111	0	1	1	1
2	Johnson (Clarksville)	271	87	32.10%	174	0	2	4	2
2	Logan (Booneville)	184	54	29.35%	121	0	2	4	0
2	Logan (Paris)	100	18	18.00%	75	0	1	5	0
2	Scott (Waldron)	116	26	22.41%	73	0	1	14	0
2	Sebastian (Fort Smith)	1,358	290	21.35%	926	0	19	72	26
2	Yell (Danville)	203	50	24.63%	134	0	1	6	8
	Area Total	2,989	684	23%	2060	0	34	123	47
3	Clark (Arkadelphia)	173	33	19.08%	128	0	1	3	6
3	Garland (Hot Springs)	898	192	21.38%	599	1	12	57	13
3	Hot Spring (Malvern)	345	80	23.19%	238	0	2	19	5
3	Howard (Nashville)	121	16	13.22%	92	0	0	7	4
3	Montgomery (Mount Ida)	70	11	15.71%	50	0	0	6	1
3	Perry (Perryville)	94	27	28.72%	62	0	0	1	1
3	Pike (Murfreesboro)	85	11	12.94%	69	0	0	3	1
3	Polk (Mena)	226	57	25.22%	160	0	5	4	0
3	Saline (Benton)	925	204	22.05%	632	0	4	45	34
	Area Total	2,937	631	21%	2030	1	24	145	65
4	Columbia (Magnolia)	166	37	22.29%	117	0	0	6	5
4	Hempstead (Hope)	181	37	20.44%	107	0	0	14	19
4	Lafayette (Lewisville)	71	27	38.03%	44	0	0	0	0
4	Little River (Ashdown)	128	35	27.34%	82	0	0	6	5
4	Miller (Texarkana)	479	100	20.88%	233	0	1	57	81
4	Nevada (Prescott)	91	16	17.58%	59	0	0	8	7
4	Ouachita (Camden)	255	69	27.06%	163	0	0	18	1
4	Sevier (DeQueen)	141	34	24.11%	78	0	0	21	6
4	Union (El Dorado)	356	110	30.90%	227	0	1	7	1
	Area Total	1,868	465	25%	1110	0	2	137	125
5	Baxter (Mountain Home)	404	90	22.28%	295	0	2	10	1
5	Boone (Harrison)	470	117	24.89%	319	0	2	24	5
5	Conway (Morrilton)	272	70	25.74%	176	0	3	18	2
5	Faulkner (Conway)	802	178	22.19%	569	0	10	29	5
5	Marion (Yellville)	167	32	19.16%	124	0	2	8	0
5	Newton (Jasper)	75	18	24.00%	49	0	1	0	7
5	Pope (Russellville)	601	177	29.45%	390	1	10	15	3
5	Searcy (Marshall)	76	22	28.95%	53	0	1	0	0
5	Van Buren (Clinton)	170	50	29.41%	113	0	0	3	2
	Area Total	3,037	754	25%	2088	1	31	107	25
6	Pulaski (East)	6	3	50.00%	3	0	0	0	0
6	Pulaski (Jacksonville)	15	3	20.00%	11	0	0	1	0
6	Pulaski (North)	28	6	21.43%	19	0	0	1	0
6	Pulaski (South)	3,102	618	19.92%	2149	1	30	214	16
6	Pulaski (Southwest)	2	0	0.00%	2	0	0	0	0
	Area Total	3,153	630	20%	2184	1	30	216	16

SFY 2008 Annual Report Card – APPENDICES

Area	County	Total	True	True %	Unsub*	Exempt Religion	Exempt UJO	UTL	Unknown
7	Bradley (Warren)	100	28	28.00%	63	0	4	4	0
7	Calhoun (Hampton)	35	5	14.29%	29	0	0	0	0
7	Cleveland (Rison)	55	19	34.55%	34	0	0	0	1
7	Dallas (Fordyce)	119	26	21.85%	88	0	1	1	0
7	Grant (Sheridan)	179	40	22.35%	128	0	0	9	1
7	Jefferson (Pine Bluff)	690	166	24.06%	450	1	3	45	0
7	Lincoln (Star City)	111	25	22.52%	80	0	0	2	3
7	Lonoke (Lonoke)	610	167	27.38%	404	1	6	27	2
7	Prairie (DeValls Bluff)	76	21	27.63%	45	0	2	3	3
	Area Total	1,975	497	25%	1,321	2	16	91	10

8	Clay (Piggott & Corning)	164	41	25.00%	117	0	0	4	2
8	Craighead (Jonesboro)	1,049	184	17.54%	802	0	4	28	9
8	Fulton (Salem)	105	30	28.57%	66	0	0	1	8
8	Greene (Paragould)	611	102	16.69%	464	0	3	30	9
8	Izard (Melbourne)	135	27	20.00%	97	0	0	3	7
8	Lawrence (Walnut Ridge)	220	43	19.55%	154	0	1	3	14
8	Mississippi (Blytheville)	406	75	18.47%	293	0	2	13	15
8	Mississippi (Osceola)	205	50	24.39%	144	0	0	3	6
8	Randolph (Pocahontas)	202	51	25.25%	142	0	2	2	5
8	Sharp (Ash Flat)	183	49	26.78%	123	1	1	3	5
	Area Total	3,280	652	20%	2402	1	13	90	80

9	Cleburne (Heber Springs)	255	62	24.31%	189	0	0	2	1
9	Crittenden (West Memphis)	561	96	17.11%	310	0	1	33	95
9	Cross (Wynne)	207	47	22.71%	144	0	0	12	0
9	Independence (Batesville)	373	55	14.75%	310	0	1	0	6
9	Jackson (Newport)	179	46	25.70%	133	0	0	0	0
9	Poinsett (Harrisburg)	426	64	15.02%	334	0	2	16	0
9	Stone (Mountain View)	101	19	18.81%	81	0	0	0	0
9	White (Searcy)	782	171	21.87%	530	0	8	34	37
9	Woodruff (Augusta)	87	30	34.48%	52	0	0	2	1
	Area Total	2,971	590	20%	2,083	0	12	99	140

10	Arkansas (Dewitt)	92	20	21.74%	72	0	0	0	0
10	Arkansas (Stuttgart)	100	25	25.00%	72	0	1	2	0
10	Ashley (Hamburg)	194	37	19.07%	149	0	1	4	1
10	Chicot (Lake Village)	108	17	15.74%	88	0	0	1	1
10	Desha (McGehee)	125	22	17.60%	101	0	0	1	0
10	Drew (Monticello)	197	59	29.95%	130	0	2	0	0
10	Lee (Marianna)	66	13	19.70%	48	0	0	1	0
10	Monroe (Brinkley)	46	11	23.91%	29	0	0	2	2
10	Monroe (Clarendon)	20	2	10.00%	16	0	0	1	1
10	Phillips (Helena)	250	73	29.20%	149	0	3	22	1
10	St. Francis (Forrest City)	316	93	29.43%	200	0	1	9	3
	Area Total	1,514	372	25%	1,054	0	8	43	9

99	State Office	13	3	23.08%	7	0	0	2	1
-----------	---------------------	-----------	----------	---------------	----------	----------	----------	----------	----------

	Statewide Total	27,672	6,288	23%	18,835	10	194	1,184	772
--	------------------------	---------------	--------------	------------	---------------	-----------	------------	--------------	------------

* "Unsub" = Unsubstantiated; "UTL" = Unable to Locate; "UJO" = Underage Juvenile Offender; "Unknown" = Status of assessment is not identified in CHRIS.

** This total includes both DCFS and CACD assessments.

APPENDIX B: Children in Foster Care by Ethnicity

Area	County	Total	White	Black	Asian	NAPI	AIAN	Hispanic	More Than 1 Race	Un-known
1	Benton (Bentonville)	286	210	9	1	1	6	48	11	0
1	Carroll (Berryville)	35	35	0	0	0	0	0	0	0
1	Madison (Huntsville)	29	25	0	0	0	0	2	2	0
1	Washington (Fayetteville)	281	184	25	0	2	3	44	23	0
	Area Total	631	454	34	1	3	9	94	36	0

2	Crawford (Van Buren)	129	110	1	1	0	0	8	9	0
2	Franklin (Ozark)	14	14	0	0	0	0	0	0	0
2	Johnson (Clarksville)	29	29	0	0	0	0	0	0	0
2	Logan (Booneville)	30	30	0	0	0	0	0	0	0
2	Logan (Paris)	15	13	1	0	0	0	1	0	0
2	Scott (Waldron)	10	10	0	0	0	0	0	0	0
2	Sebastian (Fort Smith)	660	401	86	4	0	3	69	93	4
2	Yell (Danville)	32	18	2	0	0	1	7	4	0
	Area Total	919	625	90	5	0	4	85	106	4

3	Clark (Arkadelphia)	36	11	17	0	0	0	4	4	0
3	Garland (Hot Springs)	370	241	70	1	0	0	13	45	0
3	Hot Spring (Malvern)	77	51	9	0	0	0	11	6	0
3	Howard (Nashville)	27	6	15	0	0	0	4	2	0
3	Montgomery (Mount Ida)	20	17	0	0	0	0	2	0	1
3	Perry (Perryville)	15	12	1	0	0	0	1	1	0
3	Pike (Murfreesboro)	11	8	1	0	0	0	2	0	0
3	Polk (Mena)	76	67	0	0	0	0	4	5	0
3	Saline (Benton)	89	72	6	0	0	0	0	11	0
	Area Total	721	485	119	1	0	0	41	74	1

4	Columbia (Magnolia)	40	7	30	1	0	0	1	1	0
4	Hempstead (Hope)	35	14	19	0	0	0	0	1	1
4	Lafayette (Lewisville)	27	8	16	0	0	0	0	3	0
4	Little River (Ashdown)	40	24	5	0	0	0	2	9	0
4	Miller (Texarkana)	174	87	56	0	0	0	10	21	0
4	Nevada (Prescott)	13	8	5	0	0	0	0	0	0
4	Ouachita (Camden)	65	18	40	0	0	0	0	7	0
4	Sevier (DeQueen)	33	23	1	0	0	0	8	1	0
4	Union (El Dorado)	87	42	38	0	0	0	2	5	0
	Area Total	514	231	210	1	0	0	23	48	1

5	Baxter (Mountain Home)	79	73	0	0	0	0	0	6	0
5	Boone (Harrison)	74	67	0	0	1	0	0	6	0
5	Conway (Morrilton)	94	73	4	0	0	0	9	8	0
5	Faulkner (Conway)	99	65	22	0	0	0	6	4	2
5	Marion (Yellville)	46	44	0	0	0	0	0	2	0
5	Newton (Jasper)	19	19	0	0	0	0	0	0	0
5	Pope (Russellville)	179	133	11	2	0	0	20	13	0
5	Searcy (Marshall)	25	23	0	0	0	0	2	0	0
5	Van Buren (Clinton)	51	50	0	1	0	0	0	0	0
	Area Total	666	547	37	3	1	0	37	39	2

SFY 2008 Annual Report Card – APPENDICES

Area	County	Total	White	Black	Asian	NAPI	AIAN	Hispanic	More Than 1 Race	Un-known
6	Pulaski	4	2	2	0	0	0	0	0	0
6	Pulaski (East)	70	9	58	0	0	0	0	3	0
6	Pulaski (Jacksonville)	109	65	28	0	0	0	4	11	1
6	Pulaski (North)	286	62	189	2	0	0	10	23	0
6	Pulaski (South)	323	67	217	1	0	0	18	19	1
6	Pulaski (Southwest)	168	51	96	1	0	0	6	14	0
	Area Total	960	256	590	4	0	0	38	70	2
7	Bradley (Warren)	58	21	23	0	0	0	12	1	1
7	Calhoun (Hampton)	13	7	6	0	0	0	0	0	0
7	Cleveland (Rison)	13	8	3	0	0	0	2	0	0
7	Dallas (Fordyce)	34	12	19	0	0	0	0	3	0
7	Grant (Sheridan)	34	30	0	0	0	0	0	4	0
7	Jefferson (Pine Bluff)	294	40	229	2	0	0	2	21	0
7	Lincoln (Star City)	21	6	9	0	0	0	2	4	0
7	Lonoke (Lonoke)	125	104	11	0	0	0	4	6	0
7	Prairie (DeValls Bluff)	17	7	7	0	0	0	3	0	0
	Area Total	609	235	307	2	0	0	25	39	1
8	Clay (Piggott & Corning)	43	42	0	0	0	0	0	1	0
8	Craighead (Jonesboro)	253	142	70	0	0	0	18	23	0
8	Fulton (Salem)	43	39	0	0	0	0	2	1	1
8	Greene (Paragould)	91	86	0	0	0	0	2	3	0
8	Izard (Melbourne)	41	38	0	0	0	0	2	1	0
8	Lawrence (Walnut Ridge)	65	63	1	0	0	0	1	0	0
8	Mississippi (Blytheville)	93	46	35	0	0	0	0	11	1
8	Mississippi (Osceola)	31	8	19	0	0	0	0	4	0
8	Randolph (Pocahontas)	56	52	0	0	0	0	2	2	0
8	Sharp (Ash Flat)	79	71	4	0	0	0	0	4	0
	Area Total	795	587	129	0	0	0	27	50	2
9	Cleburne (Heber Springs)	87	83	0	0	0	0	1	3	0
9	Crittenden (West Memphis)	166	53	96	4	0	0	7	6	0
9	Cross (Wynne)	38	18	15	0	0	0	1	1	3
9	Independence (Batesville)	82	67	1	0	0	0	9	5	0
9	Jackson (Newport)	67	32	33	0	0	0	1	1	0
9	Poinsett (Harrisburg)	89	79	0	0	0	1	0	9	0
9	Stone (Mountain View)	17	15	0	0	0	0	0	2	0
9	White (Searcy)	171	134	7	0	0	0	12	17	1
9	Woodruff (Augusta)	28	14	8	0	0	0	1	5	0
	Area Total	745	495	160	4	0	1	32	49	4
10	Arkansas (Dewitt)	24	13	9	0	0	0	0	2	0
10	Arkansas (Stuttgart)	21	8	13	0	0	0	0	0	0
10	Ashley (Hamburg)	44	18	21	0	0	0	3	2	0
10	Chicot (Lake Village)	26	2	17	0	0	0	1	6	0
10	Desha (McGehee)	41	18	18	0	0	0	3	2	0
10	Drew (Monticello)	87	47	26	0	0	0	7	7	0
10	Lee (Marianna)	10	2	7	0	0	0	0	1	0
10	Monroe (Brinkley)	13	2	9	0	0	0	0	2	0
10	Monroe (Clarendon)	2	0	2	0	0	0	0	0	0
10	Phillips (Helena)	58	8	44	0	0	0	1	5	0
10	St. Francis (Forrest City)	87	10	57	0	0	0	12	8	0
	Area Total	413	128	223	0	0	0	27	35	0
99	State Office	1	1	0	0	0	0	0	0	0
	Statewide Total	6,974	4,044	1,899	21	4	14	429	546	17

APPENDIX C: Children in Foster Care by Age

Area	County	Total	0-5 years	6-11 years	12-14 years	15+ years	Unknown
1	Benton (Bentonville)	286	128	64	34	60	0
1	Carroll (Berryville)	35	13	10	3	9	0
1	Madison (Huntsville)	29	11	6	4	8	0
1	Washington (Fayetteville)	281	126	56	40	59	0
	Area Total	631	278	136	81	136	0

2	Crawford (Van Buren)	129	45	36	17	31	0
2	Franklin (Ozark)	14	4	1	1	8	0
2	Johnson (Clarksville)	29	12	11	4	2	0
2	Logan (Booneville)	30	14	5	5	6	0
2	Logan (Paris)	15	3	3	1	8	0
2	Scott (Waldron)	10	7	2	0	1	0
2	Sebastian (Fort Smith)	660	248	188	88	136	0
2	Yell (Danville)	32	10	7	4	11	0
	Area Total	919	343	253	120	203	0

3	Clark (Arkadelphia)	36	12	14	4	6	0
3	Garland (Hot Springs)	370	176	92	34	68	0
3	Hot Spring (Malvern)	77	34	22	4	17	0
3	Howard (Nashville)	27	8	4	2	13	0
3	Montgomery (Mount Ida)	20	5	4	2	9	0
3	Perry (Perryville)	15	5	4	2	4	0
3	Pike (Murfreesboro)	11	4	2	0	5	0
3	Polk (Mena)	76	24	18	13	21	0
3	Saline (Benton)	89	48	18	2	21	0
	Area Total	721	316	178	63	164	0

4	Columbia (Magnolia)	40	11	11	8	10	0
4	Hempstead (Hope)	35	9	11	5	10	0
4	Lafayette (Lewisville)	27	5	6	4	12	0
4	Little River (Ashdown)	40	19	11	1	9	0
4	Miller (Texarkana)	174	67	35	19	53	0
4	Nevada (Prescott)	13	6	3	2	2	0
4	Ouachita (Camden)	65	25	13	6	21	0
4	Sevier (DeQueen)	33	16	7	3	7	0
4	Union (El Dorado)	87	31	26	9	21	0
	Area Total	514	189	123	57	145	0

5	Baxter (Mountain Home)	79	20	39	12	8	0
5	Boone (Harrison)	74	34	12	6	22	0
5	Conway (Morrilton)	94	43	25	14	12	0
5	Faulkner (Conway)	99	44	26	9	20	0
5	Marion (Yellville)	46	13	15	4	14	0
5	Newton (Jasper)	19	8	8	1	2	0
5	Pope (Russellville)	179	82	37	18	42	0
5	Searcy (Marshall)	25	6	5	4	10	0
5	Van Buren (Clinton)	51	10	11	9	21	0
	Area Total	666	260	178	77	151	0

SFY 2008 Annual Report Card – APPENDICES

Area	County	Total	0-5 years	6-11 years	12-14 years	15+ years	Unknown
6	Pulaski	4	0	1	2	1	0
6	Pulaski (East)	70	20	13	8	29	0
6	Pulaski (Jacksonville)	109	40	30	13	26	0
6	Pulaski (North)	286	97	86	42	61	0
6	Pulaski (South)	323	128	90	43	62	0
6	Pulaski (Southwest)	168	70	41	18	39	0
	Area Total	960	355	261	126	218	0

7	Bradley (Warren)	58	20	10	4	24	0
7	Calhoun (Hampton)	13	3	3	2	5	0
7	Cleveland (Rison)	13	2	7	3	1	0
7	Dallas (Fordyce)	34	12	9	5	8	0
7	Grant (Sheridan)	34	4	15	6	9	0
7	Jefferson (Pine Bluff)	294	126	70	28	70	0
7	Lincoln (Star City)	21	10	4	1	6	0
7	Lonoke (Lonoke)	125	54	37	11	23	0
7	Prairie (DeValls Bluff)	17	10	2	1	4	0
	Area Total	609	241	157	61	150	0

8	Clay (Piggott & Corning)	43	15	18	5	5	0
8	Craighead (Jonesboro)	253	123	61	26	43	0
8	Fulton (Salem)	43	14	14	7	8	0
8	Greene (Paragould)	91	41	21	5	24	0
8	Izard (Melbourne)	41	11	7	13	10	0
8	Lawrence (Walnut Ridge)	65	25	14	10	16	0
8	Mississippi (Blytheville)	93	40	27	13	13	0
8	Mississippi (Osceola)	31	15	6	3	7	0
8	Randolph (Pocahontas)	56	12	20	14	10	0
8	Sharp (Ash Flat)	79	28	17	9	25	0
	Area Total	795	324	205	105	161	0

9	Cleburne (Heber Springs)	87	32	26	12	17	0
9	Crittenden (West Memphis)	166	79	24	22	41	0
9	Cross (Wynne)	38	11	10	6	11	0
9	Independence (Batesville)	82	32	29	6	15	0
9	Jackson (Newport)	67	32	14	5	16	0
9	Poinsett (Harrisburg)	89	38	29	10	12	0
9	Stone (Mountain View)	17	4	5	3	5	0
9	White (Searcy)	171	78	46	23	24	0
9	Woodruff (Augusta)	28	16	8	3	1	0
	Area Total	745	322	191	90	142	0

10	Arkansas (Dewitt)	24	11	4	3	6	0
10	Arkansas (Stuttgart)	21	8	3	3	7	0
10	Ashley (Hamburg)	44	18	11	2	13	0
10	Chicot (Lake Village)	26	8	3	3	12	0
10	Desha (McGehee)	41	7	13	7	14	0
10	Drew (Monticello)	87	20	22	16	29	0
10	Lee (Marianna)	10	5	2	1	2	0
10	Monroe (Brinkley)	13	8	0	1	4	0
10	Monroe (Clarendon)	2	1	1	0	0	0
10	Phillips (Helena)	58	21	14	9	14	0
10	St. Francis (Forrest City)	87	41	18	12	16	0
	Area Total	413	148	91	57	117	0

99	State Office	1	1	0	0	0	0
-----------	---------------------	----------	----------	----------	----------	----------	----------

	Statewide Total	6,974	2,777	1,773	837	1,587	0
--	------------------------	--------------	--------------	--------------	------------	--------------	----------

APPENDIX D: Children in Foster Care by Gender

Area	County	Total	Male	Female
1	Benton (Bentonville)	286	143	143
1	Carroll (Berryville)	35	17	18
1	Madison (Huntsville)	29	12	17
1	Washington (Fayetteville)	281	132	149
	Area Total	631	304	327

2	Crawford (Van Buren)	129	70	59
2	Franklin (Ozark)	14	5	9
2	Johnson (Clarksville)	29	14	15
2	Logan (Booneville)	30	20	10
2	Logan (Paris)	15	5	10
2	Scott (Waldron)	10	4	6
2	Sebastian (Fort Smith)	660	322	338
2	Yell (Danville)	32	19	13
	Area Total	919	459	460

3	Clark (Arkadelphia)	36	16	20
3	Garland (Hot Springs)	370	187	183
3	Hot Spring (Malvern)	77	31	46
3	Howard (Nashville)	27	18	9
3	Montgomery (Mount Ida)	20	15	5
3	Perry (Perryville)	15	9	6
3	Pike (Murfreestboro)	11	4	7
3	Polk (Mena)	76	34	42
3	Saline (Benton)	89	40	49
	Area Total	721	354	367

4	Columbia (Magnolia)	40	18	22
4	Hempstead (Hope)	35	17	18
4	Lafayette (Lewisville)	27	13	14
4	Little River (Ashdown)	40	15	25
4	Miller (Texarkana)	174	99	75
4	Nevada (Prescott)	13	4	9
4	Ouachita (Camden)	65	38	27
4	Sevier (DeQueen)	33	16	17
4	Union (El Dorado)	87	41	46
	Area Total	514	261	253

5	Baxter (Mountain Home)	79	41	38
5	Boone (Harrison)	74	39	35
5	Conway (Morrilton)	94	51	43
5	Faulkner (Conway)	99	60	39
5	Marion (Yellville)	46	18	28
5	Newton (Jasper)	19	11	8
5	Pope (Russellville)	179	92	87
5	Searcy (Marshall)	25	10	15
5	Van Buren (Clinton)	51	19	32
	Area Total	666	341	325

SFY 2008 Annual Report Card – APPENDICES

Area	County	Total	Male	Female
6	Pulaski	4	2	2
6	Pulaski (East)	70	37	33
6	Pulaski (Jacksonville)	109	60	49
6	Pulaski (North)	286	148	138
6	Pulaski (South)	323	162	161
6	Pulaski (Southwest)	168	93	75
	Area Total	960	502	458

7	Bradley (Warren)	58	30	28
7	Calhoun (Hampton)	13	7	6
7	Cleveland (Rison)	13	7	6
7	Dallas (Fordyce)	34	18	16
7	Grant (Sheridan)	34	13	21
7	Jefferson (Pine Bluff)	294	133	161
7	Lincoln (Star City)	21	8	13
7	Lonoke (Lonoke)	125	56	69
7	Prairie (DeValls Bluff)	17	7	10
	Area Total	609	279	330

8	Clay (Piggott & Corning)	43	18	25
8	Craighead (Jonesboro)	253	137	116
8	Fulton (Salem)	43	19	24
8	Greene (Paragould)	91	35	56
8	Izard (Melbourne)	41	15	26
8	Lawrence (Walnut Ridge)	65	27	38
8	Mississippi (Blytheville)	93	43	50
8	Mississippi (Osceola)	31	16	15
8	Randolph (Pocahontas)	56	25	31
8	Sharp (Ash Flat)	79	39	40
	Area Total	795	374	421

9	Cleburne (Heber Springs)	87	43	44
9	Crittenden (West Memphis)	166	72	94
9	Cross (Wynne)	38	17	21
9	Independence (Batesville)	82	49	33
9	Jackson (Newport)	67	22	45
9	Poinsett (Harrisburg)	89	36	53
9	Stone (Mountain View)	17	12	5
9	White (Searcy)	171	96	75
9	Woodruff (Augusta)	28	12	16
	Area Total	745	359	386

10	Arkansas (Dewitt)	24	10	14
10	Arkansas (Stuttgart)	21	10	11
10	Ashley (Hamburg)	44	23	21
10	Chicot (Lake Village)	26	15	11
10	Desha (McGehee)	41	17	24
10	Drew (Monticello)	87	46	41
10	Lee (Marianna)	10	5	5
10	Monroe (Brinkley)	13	6	7
10	Monroe (Clarendon)	2	2	0
10	Phillips (Helena)	58	24	34
10	St. Francis (Forrest City)	87	39	48
	Area Total	413	197	216

99	State Office	1	0	1
-----------	---------------------	----------	----------	----------

	Statewide Total	6,974	3,430	3,544
--	------------------------	--------------	--------------	--------------

APPENDIX E: Children in Foster Care by Lengths of Stay

Area	County	Client Total	Under 30 days	30-90 days	3-6 mos	7-12 mos	13-24 mos	25-36 mos	Over 36 mos
1	Benton (Bentonville)	286	63	57	45	32	59	19	11
1	Carroll (Berryville)	35	5	8	3	4	10	3	2
1	Madison (Huntsville)	29	4	4	5	9	4	0	3
1	Washington (Fayetteville)	281	75	37	35	37	41	36	20
	Area Total	631	147	106	88	82	114	58	36

2	Crawford (Van Buren)	129	31	29	15	17	21	6	10
2	Franklin (Ozark)	14	0	3	1	5	3	1	1
2	Johnson (Clarksville)	29	6	6	7	4	0	1	5
2	Logan (Booneville)	30	12	5	1	5	2	1	4
2	Logan (Paris)	15	0	8	1	0	2	0	4
2	Scott (Waldron)	10	4	0	3	1	0	0	2
2	Sebastian (Fort Smith)	660	80	102	52	81	123	79	143
2	Yell (Danville)	32	3	0	3	4	12	9	1
	Area Total	919	136	153	83	117	163	97	170

3	Clark (Arkadelphia)	36	7	7	9	7	1	0	5
3	Garland (Hot Springs)	370	54	96	61	67	46	25	21
3	Hot Spring (Malvern)	77	40	14	9	8	4	0	2
3	Howard (Nashville)	27	1	2	0	4	3	0	17
3	Montgomery (Mount Ida)	20	8	5	1	1	1	3	1
3	Perry (Perryville)	15	8	0	1	1	5	0	0
3	Pike (Murfreesboro)	11	2	2	0	3	1	2	1
3	Polk (Mena)	76	9	12	8	23	11	4	9
3	Saline (Benton)	89	41	6	10	7	17	3	5
	Area Total	721	170	144	99	121	89	37	61

4	Columbia (Magnolia)	40	34	2	0	1	2	0	1
4	Hempstead (Hope)	35	10	5	6	4	5	0	5
4	Lafayette (Lewisville)	27	11	6	6	0	0	1	3
4	Little River (Ashdown)	40	5	8	3	5	3	12	4
4	Miller (Texarkana)	174	22	24	15	35	50	11	17
4	Nevada (Prescott)	13	2	6	1	1	1	0	2
4	Ouachita (Camden)	65	21	13	5	3	9	4	10
4	Sevier (DeQueen)	33	3	14	3	2	6	4	1
4	Union (El Dorado)	87	28	15	10	7	10	9	8
	Area Total	514	136	93	49	58	86	41	51

5	Baxter (Mountain Home)	79	12	8	4	19	15	8	13
5	Boone (Harrison)	74	18	17	5	14	13	3	4
5	Conway (Morrilton)	94	11	26	16	11	16	5	9
5	Faulkner (Conway)	99	15	18	10	25	13	9	9
5	Marion (Yellville)	46	2	12	3	5	14	2	8
5	Newton (Jasper)	19	4	8	1	4	1	0	1
5	Pope (Russellville)	179	51	25	21	34	29	10	9
5	Searcy (Marshall)	25	4	4	1	5	6	1	4
5	Van Buren (Clinton)	51	5	4	9	12	14	3	4
	Area Total	666	122	122	70	129	121	41	61

SFY 2008 Annual Report Card – APPENDICES

Area	County	Client Total	Under 30 days	30-90 days	3-6 mos	7-12 mos	13-24 mos	25-36 mos	Over 36 mos
6	Pulaski	4	1	1	2	0	0	0	0
6	Pulaski (East)	70	0	1	3	9	14	10	33
6	Pulaski (Jacksonville)	109	1	6	15	12	41	9	25
6	Pulaski (North)	286	35	30	13	39	75	38	56
6	Pulaski (South)	323	45	40	26	48	68	43	53
6	Pulaski (Southwest)	168	9	7	8	27	57	24	36
	Area Total	960	91	85	67	135	255	124	203

7	Bradley (Warren)	58	12	4	8	4	19	2	9
7	Calhoun (Hampton)	13	6	3	1	1	1	0	1
7	Cleveland (Rison)	13	3	5	4	0	1	0	0
7	Dallas (Fordyce)	34	13	2	7	6	4	1	1
7	Grant (Sheridan)	34	16	7	0	6	4	0	1
7	Jefferson (Pine Bluff)	294	74	48	37	39	45	16	35
7	Lincoln (Star City)	21	2	6	6	2	1	2	2
7	Lonoke (Lonoke)	125	39	22	14	25	12	8	5
7	Prairie (DeValls Bluff)	17	3	7	1	2	4	0	0
	Area Total	609	168	104	78	85	91	29	54

8	Clay (Piggott & Corning)	43	1	17	3	8	3	9	2
8	Craighead (Jonesboro)	253	32	21	41	47	66	26	20
8	Fulton (Salem)	43	2	8	3	9	8	6	7
8	Greene (Paragould)	91	8	21	16	15	20	4	7
8	Izard (Melbourne)	41	1	3	2	9	14	4	8
8	Lawrence (Walnut Ridge)	65	6	13	11	9	17	8	1
8	Mississippi (Blytheville)	93	41	20	4	17	6	5	0
8	Mississippi (Osceola)	31	6	3	5	8	2	2	5
8	Randolph (Pocahontas)	56	8	7	3	11	9	12	6
8	Sharp (Ash Flat)	79	14	9	1	14	25	6	10
	Area Total	795	119	122	89	147	170	82	66

9	Cleburne (Heber Springs)	87	18	9	6	17	22	10	5
9	Crittenden (West Memphis)	166	13	29	30	23	26	27	18
9	Cross (Wynne)	38	2	10	4	7	2	8	5
9	Independence (Batesville)	82	10	12	11	8	19	10	12
9	Jackson (Newport)	67	3	6	6	21	21	7	3
9	Poinsett (Harrisburg)	89	6	20	17	27	5	7	7
9	Stone (Mountain View)	17	0	0	0	6	5	2	4
9	White (Searcy)	171	35	29	18	29	32	13	15
9	Woodruff (Augusta)	28	0	0	0	15	9	3	1
	Area Total	745	87	115	92	153	141	87	70

10	Arkansas (Dewitt)	24	4	3	1	4	2	8	2
10	Arkansas (Stuttgart)	21	5	0	2	1	6	6	1
10	Ashley (Hamburg)	44	15	9	5	4	5	3	3
10	Chicot (Lake Village)	26	1	6	2	4	6	4	3
10	Desha (McGehee)	41	7	1	3	9	12	4	5
10	Drew (Monticello)	87	11	9	3	13	14	5	32
10	Lee (Marianna)	10	2	1	1	2	2	0	2
10	Monroe (Brinkley)	13	2	2	3	1	0	3	2
10	Monroe (Clarendon)	2	2	0	0	0	0	0	0
10	Phillips (Helena)	58	6	8	2	12	8	10	12
10	St. Francis (Forrest City)	87	11	18	14	15	14	3	12
	Area Total	413	66	57	36	65	69	46	74

99	State Office	1	0	0	1	0	0	0	0
-----------	---------------------	----------	----------	----------	----------	----------	----------	----------	----------

	Statewide Total	6,974	1,242	1,101	752	1,092	1,299	642	846
--	------------------------	--------------	--------------	--------------	------------	--------------	--------------	------------	------------

APPENDIX F: Services Provided during the Year

Area	County	FC Cases	PS Cases	PS Children	SS Cases	SS Children	Total
1	Benton (Bentonville)	286	394	854	2	3	682
1	Carroll (Berryville)	35	82	168	1	4	118
1	Madison (Huntsville)	29	67	141	2	5	98
1	Washington (Fayetteville)	281	629	1,438	12	18	922
	Area Total	631	1,172	2,601	17	30	1,820

2	Crawford (Van Buren)	129	247	522	51	152	427
2	Franklin (Ozark)	14	66	141	4	9	84
2	Johnson (Clarksville)	29	85	182	2	3	116
2	Logan (Booneville)	30	64	133	-	-	94
2	Logan (Paris)	15	43	75	-	-	58
2	Scott (Waldron)	10	27	54	9	11	46
2	Sebastian (Fort Smith)	660	746	1,620	13	27	1,419
2	Yell (Danville)	32	79	153	1	2	112
	Area Total	919	1,357	2,880	80	204	2,356

3	Clark (Arkadelphia)	36	38	79	1	2	75
3	Garland (Hot Springs)	370	415	835	50	94	835
3	Hot Spring (Malvern)	77	96	210	11	17	184
3	Howard (Nashville)	27	26	43	2	3	55
3	Montgomery (Mount Ida)	20	23	52	1	3	44
3	Perry (Perryville)	15	39	76	5	4	59
3	Pike (Murfreesboro)	11	24	44	-	-	35
3	Polk (Mena)	76	101	205	4	8	181
3	Saline (Benton)	89	296	601	8	14	393
	Area Total	721	1,058	2,145	82	145	1,861

4	Columbia (Magnolia)	40	60	143	5	10	105
4	Hempstead (Hope)	35	81	161	14	30	130
4	Lafayette (Lewisville)	27	31	67	-	-	58
4	Little River (Ashdown)	40	50	110	2	5	92
4	Miller (Texarkana)	174	169	342	5	12	348
4	Nevada (Prescott)	13	42	109	2	2	57
4	Ouachita (Camden)	65	117	220	4	8	186
4	Sevier (DeQueen)	33	51	112	1	1	85
4	Union (El Dorado)	87	153	364	7	13	247
	Area Total	514	754	1,628	40	81	1,308

5	Baxter (Mountain Home)	79	138	280	2	2	219
5	Boone (Harrison)	74	139	288	7	15	220
5	Conway (Morrilton)	94	123	243	1	1	218
5	Faulkner (Conway)	99	228	479	4	4	331
5	Marion (Yellville)	46	64	125	3	3	113
5	Newton (Jasper)	19	18	40	3	8	40
5	Pope (Russellville)	179	267	540	24	45	470
5	Searcy (Marshall)	25	35	71	6	11	66
5	Van Buren (Clinton)	51	70	140	2	3	123
	Area Total	666	1,082	2,206	52	92	1,800

SFY 2008 Annual Report Card – APPENDICES

Area	County	FC Cases	PS Cases	PS Children	SS Cases	SS Children	Total
6	Pulaski	4	15	44	1	3	20
6	Pulaski (East)	70	59	111	4	4	133
6	Pulaski (Jacksonville)	109	163	377	24	39	296
6	Pulaski (North)	286	259	681	44	108	589
6	Pulaski (South)	323	518	1,160	17	25	858
6	Pulaski (Southwest)	168	193	414	15	19	376
	Area Total	960	1,207	2,787	105	198	2,272

7	Bradley (Warren)	58	53	96	3	5	114
7	Calhoun (Hampton)	13	9	19	2	4	24
7	Cleveland (Rison)	13	17	33	4	7	34
7	Dallas (Fordyce)	34	33	67	3	3	70
7	Grant (Sheridan)	34	43	80	18	31	95
7	Jefferson (Pine Bluff)	294	317	780	7	17	618
7	Lincoln (Star City)	21	24	47	10	18	55
7	Lonoke (Lonoke)	125	197	377	2	5	324
7	Prairie (DeValls Bluff)	17	35	60	1	1	53
	Area Total	609	728	1,559	50	91	1,387

8	Clay (Piggott & Corning)	43	66	132	9	20	118
8	Craighead (Jonesboro)	253	386	909	8	12	647
8	Fulton (Salem)	43	74	155	5	11	122
8	Greene (Paragould)	91	167	395	13	30	271
8	Izard (Melbourne)	41	67	128	3	5	111
8	Lawrence (Walnut Ridge)	65	77	179	5	8	147
8	Mississippi (Blytheville)	93	111	281	11	26	215
8	Mississippi (Osceola)	31	57	162	3	6	91
8	Randolph (Pocahontas)	56	107	244	2	4	165
8	Sharp (Ash Flat)	79	105	221	7	18	191
	Area Total	795	1,217	2,806	66	140	2,078

9	Cleburne (Heber Springs)	87	96	202	2	4	185
9	Crittenden (West Memphis)	166	177	442	6	15	349
9	Cross (Wynne)	38	95	204	6	8	139
9	Independence (Batesville)	82	90	189	15	21	187
9	Jackson (Newport)	67	88	194	6	12	161
9	Poinsett (Harrisburg)	89	131	342	4	7	224
9	Stone (Mountain View)	17	20	39	3	7	40
9	White (Searcy)	171	273	535	8	10	452
9	Woodruff (Augusta)	28	46	97	-	-	74
	Area Total	745	1,016	2,244	50	84	1,811

10	Arkansas (Dewitt)	24	27	61	1	1	52
10	Arkansas (Stuttgart)	21	41	98	3	5	65
10	Ashley (Hamburg)	44	76	145	9	17	129
10	Chicot (Lake Village)	26	44	78	9	17	79
10	Desha (McGehee)	41	53	107	16	21	110
10	Drew (Monticello)	87	109	211	12	20	208
10	Lee (Marianna)	10	26	56	3	12	39
10	Monroe (Brinkley)	13	35	87	11	28	59
10	Monroe (Clarendon)	2	8	16	5	18	15
10	Phillips (Helena)	58	110	288	8	28	176
10	St. Francis (Forrest City)	87	183	462	23	50	293
	Area Total	413	712	1,609	100	217	1,225

99	State Office	1	2	4	-	-	3
-----------	---------------------	----------	----------	----------	----------	----------	----------

	Statewide Total	6,974	10,305	22,469	642	1,282	17,921
--	------------------------	--------------	---------------	---------------	------------	--------------	---------------