

# Quarterly Performance Report

***4th Quarter  
SFY 2008***

***(April 2008 – June 2008)***

**Arkansas Department of Human Services  
Division of Children and Family Services  
Quality Assurance Unit**

**Hornby Zeller Associates, Inc.**

**June 2008**

A large, bold, white letter 'Q' is centered vertically on a red rectangular background.A large, bold, white letter 'P' is centered vertically on a red rectangular background.A large, bold, white letter 'R' is centered vertically on a red rectangular background.

## Table of Contents

<b>Executive Summary</b> .....	<b>i</b>
<b>Part I: Performance Indicators</b> .....	<b>1</b>
Percentage of Families with True Allegations of Child Maltreatment Three Months, Six Months and One Year after a Previous True Report ....	2
Percentage of Foster Families with True Reports of Maltreatment.....	2
Percentage of Children Receiving Supportive Services, Protective Services or Intensive Family Services (IFS) who were Abused or Neglected within One Year of the Initiation of Services.....	3
Percentage of Children Receiving Supportive Services, Protective Services or Intensive Family Services (IFS) who Entered Foster Care Within One Year of the Initiation of Services .....	4
Percentage of Children in Foster Care who Returned Home within Eighteen Months .....	4
Percentage of Children in Foster Care who have Experienced Three or more Placements within the Past Eighteen Months.....	5
Percentage of Siblings in Placement who are Placed Together .....	6
Percentage of Children Living with Adoptive Families within Twelve Months of the Termination of Parental Rights .....	7
Number of Children Placed in Pre-adoptive Homes whose Adoptions were Finalized within Twelve Months of Entering Pre-adoptive Placements .....	7
<b>Part II: Compliance Index</b> .....	<b>8</b>
Timely Initiation of Child Maltreatment Assessments .....	9
Timely Completion of Child Maltreatment Assessments.....	10
24- and 72-Hour Initial Health Screenings for Children Entering Foster Care .....	11
Comprehensive Health Assessments.....	12
Foster Home Recruitment .....	13
Foster Home Re-evaluations .....	13
Required Visits Made by Worker .....	14
<b>Part III: Description of Population and Services</b> .....	<b>15</b>
<b>Section I: True Child Maltreatment Reports</b> .....	<b>16</b>
Child Maltreatment Assessments.....	16
Characteristics of Children in True Maltreatment Reports.....	18
Children Involved in Allegations of True Maltreatment Reports.....	20
<b>Section II: Foster Care</b> .....	<b>21</b>
Characteristics of Children in Foster Care.....	21
Entries into Foster Care .....	25
Exits from Foster Care .....	29
Permanency Goals of Children in Foster Care.....	32
Length of Stay of Children in Foster Care .....	33
Number of Placements of Children in Foster Care.....	34

Quarterly Performance Report – Table of Contents

---

Characteristics of Children who Experienced Two or More Placements ..	35
Current Placement of Children in Foster Care .....	37
Characteristics of Children on Runaway Status at the End of the Quarter.....	38
Characteristics of Children in Relative Care.....	40
<b>Section III: Adoption.....</b>	<b>42</b>
Characteristics of Children with a Permanency Goal of Adoption During the Quarter.....	42
Characteristics of Children with a Permanency Goal of Adoption at the End of the Quarter .....	44
Characteristics of Children whose Parents have had Parental Rights Terminated During the Quarter .....	46
Characteristics of Children Available for Adoption at the End of the Quarter.....	48
Current Placements of Children Available for Adoption .....	50
Characteristics of Children in Pre-adoptive Placements .....	51
Children not Placed in Adoptive Homes whose Parents have had their Parental Rights Terminated .....	53
Children with Special Needs .....	54
Characteristics of Children with Finalized Adoptions.....	54
Subsidized Adoptions.....	56
Characteristics of Children who Received Adoption Subsidies .....	56
Adoptive Homes .....	57

## EXECUTIVE SUMMARY

The Quarterly Performance Report (QPR) is distributed to Division of Children and Family Services' (DCFS) managers and legislative committees dealing with children and youth. The QPR for the fourth quarter of State Fiscal Year (SFY) 2008, specifically April through June 2008, consists of three parts:

1. **Performance Indicators**, which provide information on service outcomes, such as:
  - a. *Percentage of Families with True Allegations of Child Maltreatment Three Months, Six Months and One Year after a Previous True Report*
  - b. *Percentage of Siblings in Placement who are Placed Together*
  - c. *Percentage of Children Living with Adoptive Families within Twelve Months of the Termination of Parental Rights*
  
2. **Compliance Index**, which reports on the Division's compliance with requirements set by DCFS with guidance from the Arkansas legislative children and youth committees, such as:
  - a. *Timely Completion of Child Maltreatment Assessments*
  - b. *24- and 72-Hour Initial Health Screenings for Children Entering Foster Care*
  - c. *Foster Home Recruitment*
  
3. **Description of Population and Services**, which describes the children who were the subjects of maltreatment reports; were served in foster care; and were provided adoption services, such as:
  - a. *Permanency Goals of Children in Foster Care*
  - b. *Characteristics of Children in Pre-Adoptive Homes*

The QPR provides this information on a quarterly basis, showing trends over time. The report provides the agency with information on the populations it serves and on pertinent issues so the agency can improve performance and better target its efforts.

## Part I: Performance Indicators

DCFS has established nine performance indicators to measure its progress with regard to its major goals of child safety, permanency and well-being. During the first quarter, DCFS continued its efforts toward meeting these goals. Overall, DCFS maintained a performance standard that mirrors past efforts and successes.

There were no noteworthy areas in this section during the fourth quarter.

## Part II: Compliance Index

DCFS has set compliance measures with guidance from the House Committees on Aging, Children and Youth, Legislative and Military Affairs and the Senate Interim Committee on Children and Youth. An index is compiled by reporting the level of compliance with these measures.

For the fourth quarter, the QPR addresses six noteworthy areas, as shown below:

- Timely Initiation of Child Maltreatment Assessments

The percentage for timely initiations stood at **86 percent**, a decrease of two percentage points from the previous quarter (88%) and below the 95 percent compliance goal.

Two of the ten DCFS Service Areas improved compliance with Priority One initiations, and two areas improved compliance with Priority Two initiations. All areas met or exceeded 89 percent compliance for Priority One initiations, including five areas that met or exceeded the 95 percent goal. For Priority Two initiations, three areas met or exceeded 90 percent compliance, although no areas met the 95 percent goal.

With compliance in several areas falling below the goal of 95 percent for both Priority One and Priority Two initiations, areas have established corrective action plans to help improve initiations' timelines. Areas will continue to prioritize incoming referrals in order to ensure children's safety. Several areas are utilizing staff from other units to do investigations.

- Timely Completion of Child Maltreatment Assessments

The percentage for timely completions stood at **58 percent**, a decrease of four percentage points from the previous quarter (62%) and below the goal of 90 percent.

No areas met the 95 percent goal for timely completions. Two areas increased compliance for Priority I completions, and three areas increased compliance for Priority II completions.

Since compliance in all areas fell below the goal of 95 percent for both Priority One and Priority Two completions, areas have established corrective actions to increase compliance in future quarters. Most areas intend to increase Area Managers and County Supervisors' involvement in overseeing and ensuring that investigations are completely timely and documented promptly. Other correction actions include disciplining staff who reach a certain limit of overdue assessments and using staff from counties with less volume to assist counties at capacity with their backlog of assessments.

- 24-Hour and 72-Hour Initial Health Screenings (IHS) for Children Entering Foster Care

The percentage for 24-hour initial health screenings stood at **90 percent**, a decrease of seven percentage points from the previous quarter (97%) and below the goal of 95 percent.

The percentage for 72-hour initial health screenings stood at **84 percent**, a decrease of two percentage points from the previous quarter (86%) and below the goal of 95 percent.

For the 24-hour screenings, five areas met 100 percent compliance. Two other areas either met or exceeded the 95 percent goal, and two more met or exceeded 90 percent. Only one area struggled with compliance, and the area anticipates correcting this deficiency by having its Health Service Workers track scheduled appointments to ensure their completion. Overall, seven areas met or exceeded the 95 percent compliance goal for 24-hour screenings.

For the 72-hour screenings, two areas improved compliance over the previous quarter. Areas 7 and 10 exceeded the 95 percent goal, and three additional areas achieved a compliance rate that met or exceeded 88 percent.

Although compliance fell below the goal of 95 percent, areas have established corrective actions to help remedy the barriers that prevent more timely health screenings. Several areas attributed their compliance figures to scheduling problems between workers and health care providers, but Area Managers hope that advanced planning and scheduling can improve these numbers. Specific corrective actions include a renewed emphasis on scheduling and completing appointments for children coming into care and assigning available staff to perform some Health Service Worker duties.

- Comprehensive Health Assessments

The percentage for comprehensive health assessments stood at **93 percent**, an increase of two percentage points from the previous quarter and just below the goal of 95 percent.

Four areas improved compliance over the previous quarter, and five areas either met or exceeded the 95 percent goal. Three additional areas met or exceeded 88 percent.

- Foster Home Recruitment

There were 61 new foster homes recruited during the quarter, an increase from the 52 homes recruited during the previous quarter but below the goal of 80 new homes. This represents a compliance rate of **76 percent** for the quarter.

In order to increase foster home recruitment statewide, corrective actions include increasing the frequency of foster family inquiry meetings and other promotional efforts. Many areas have promoted the need for new foster homes by recruiting at local community organizations, churches, civic groups and through general word-of-mouth. DCFS recently assigned a staff person to coordinate foster home recruitment statewide, and the agency continues to maintain a strong partnership with *The C.A.L.L. (Children of Arkansas Loved for a Lifetime)*, a faith-based foster parent recruitment organization presently operating in Area 6 and one county in Area 7. However, DCFS hopes to expand the partnership to other areas and counties in the future.

- Required Visits Made by Worker

During the fourth quarter, the percentage of children who received a visit averaged **59 percent**, which was below the goal of 85 percent. The percentage of children who received visits from April through June averaged 60 percent, 58 percent, and 59 percent respectively.

For the second consecutive quarter, all ten areas decreased compliance with required worker visits over the previous quarter. No areas met or exceeded the 85 percent goal.

In order to further increase the number of required worker visits, most areas have placed a greater focus on monitoring caseworkers' visitation schedule. Several areas also emphasized the need to ensure that workers correctly document their visits. Some areas seek explanations from workers for missed visits, and enforce progressive discipline when necessary. However, the demand on existing caseworkers continues to increase due to the growing volume of children

entering care while staff shortages continue. Resources were shifted from Central Office to field services to increase service quality in this and other areas.

### **Part III: Description of Population and Services**

The Description of Population and Services section describes the children who were subjects of maltreatment reports; were served in foster care; and were provided with adoption services.

There were no noteworthy areas in this section during the fourth quarter.

## **PART I: PERFORMANCE INDICATORS**

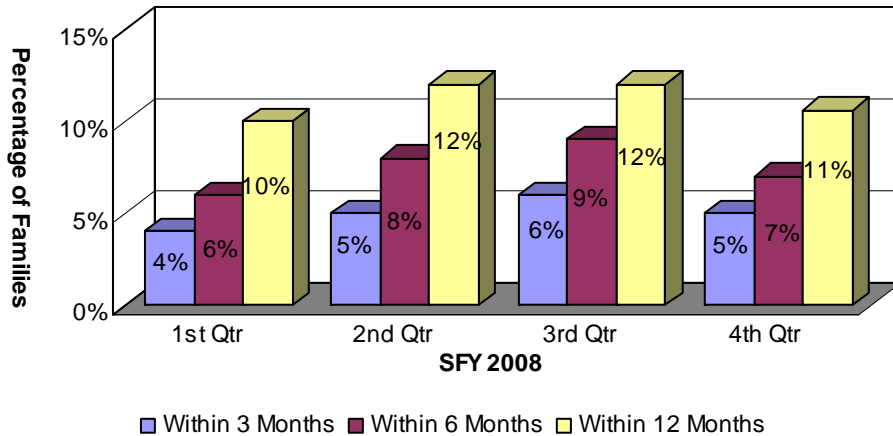
The Division has established nine performance measures to indicate achievement levels regarding its major goals in child safety, family preservation and permanency:

- Percentage of families with true allegations of child maltreatment three months, six months and one year after a previous true report;
- Percentage of foster families with true reports of maltreatment;
- Percentage of children receiving Supportive Services, Protective Services or Intensive Family Services (IFS) who were abused or neglected within one year of the initiation of services;
- Percentage of children receiving Supportive Services, Protective Services or Intensive Family Services (IFS) who entered foster care within one year of the initiation of services;
- Percentage of children in foster care who returned home within eighteen months;
- Percentage of children in foster care who have experienced three or more placements within the past eighteen months;
- Percentage of siblings in placement who are placed together;
- Percentage of children living with adoptive families within twelve months of the termination of parental rights; and
- Number of children placed in pre-adoptive homes whose adoptions were finalized within twelve months of entering pre-adoptive placements.

**Percentage of Families with True Allegations of Child Maltreatment Three Months, Six Months and One Year after a Previous True Report**

Of the 1,791 families involved in true reports of maltreatment during the fourth quarter one year ago, only 11 percent (191) had a subsequent true report within 12 months. Fifty-eight percent of true reports involved both the same perpetrator and the same type of maltreatment as the initial report<sup>1</sup>.

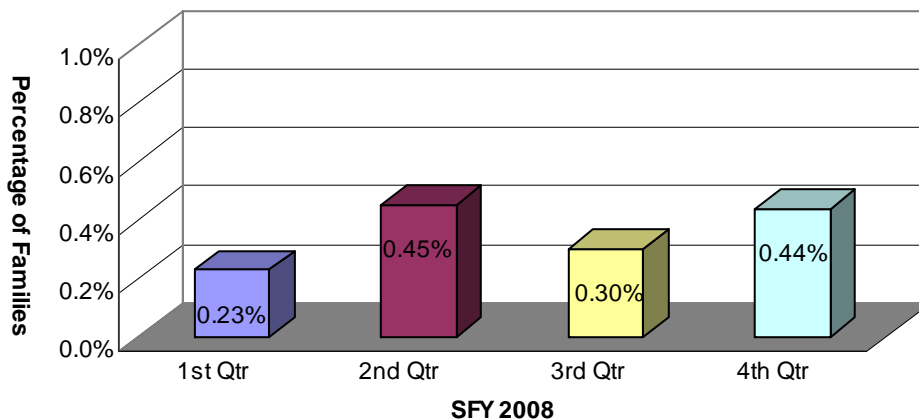
**Chart 1: Recurrence of Maltreatment within 12 Months of Initial Report**



**Percentage of Foster Families with True Reports of Maltreatment**

Of the 43 foster home maltreatment reports received during the fourth quarter, only six were found to be true. Based on the 1,354 foster homes<sup>2</sup> active during the quarter, the percentage of foster families with true reports of maltreatment was 0.44 percent.

**Chart 2: Percentage of Foster Families with True Reports of Maltreatment**



<sup>1</sup> The remaining 42 percent of the subsequent reports were distributed as follows: No repetition of perpetrator or type of abuse – 16.23 percent; Same perpetrator only – 5.24 percent; Same type of abuse only – 20.94 percent.

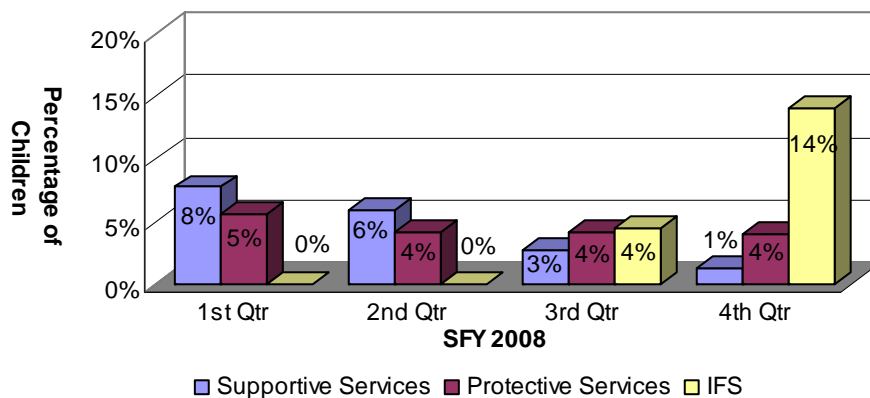
<sup>2</sup> This includes family and therapeutic foster homes.

**Percentage of Children Receiving Supportive Services, Protective Services or Intensive Family Services (IFS) who were Abused or Neglected within One Year of the Initiation of Services**

Generally, families receiving Supportive Services have less severe problems. However, families receiving Intensive Family Services (IFS) are, by definition, at imminent risk of having one or more children placed in foster care or already have children in foster care. Families receiving Protective Services generally fall between those two extremes.

Of the 236 children who began receiving Supportive Services between April and June 2007, 3 children (1%) experienced a true report of maltreatment within one year. Of the 3,432 children who began receiving Protective Services, 136 children (4%) were involved in a true report within one year. Of the 122 children who began receiving IFS, 17 children (14%) were involved in a true report within one year.

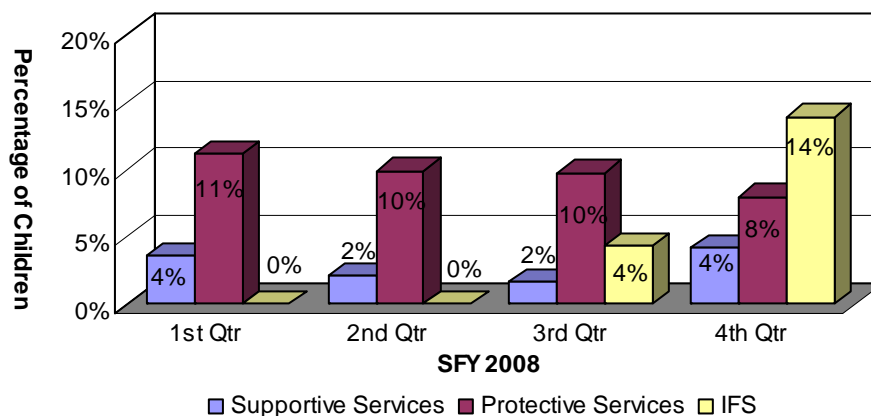
**Chart 3: Children Receiving Supportive Services, Protective Services or IFS who were Abused or Neglected within One Year of the Initiation of Services**



**Percentage of Children Receiving Supportive Services, Protective Services or Intensive Family Services (IFS) who Entered Foster Care within One Year of the Initiation of Services**

Between April and June 2007, one of the 236 (0%) children who began receiving Supportive Services entered foster care within one year of the initiation of these services; 274 of the 3,432 (8%) children who began receiving Protective Services entered care within one year; and 17 of the 122 (14%) children who began receiving IFS entered care within one year.

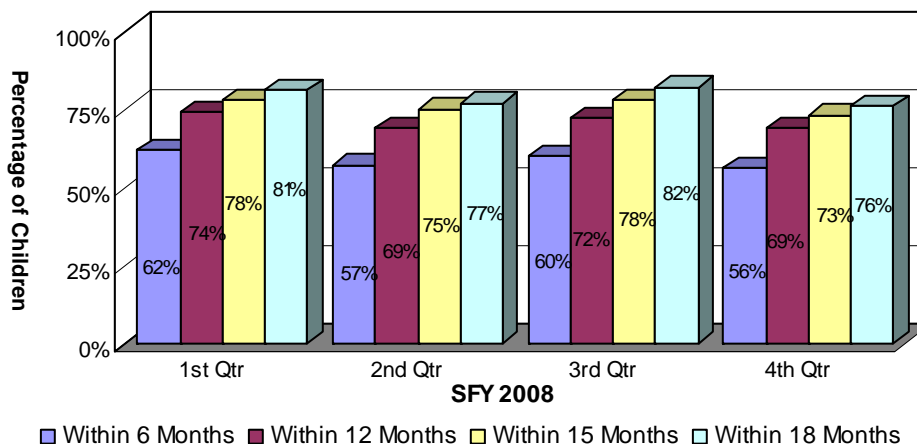
**Chart 4: Children Receiving Supportive Services, Protective Services or Intensive Family Services who Entered Foster Care within One Year of the Initiation of Services**



**Percentage of Children in Foster Care who Returned Home within Eighteen Months**

During the quarter 18 months prior to the current quarter, 965 children entered foster care. Of those, 733 children (76%) returned home within 18 months.

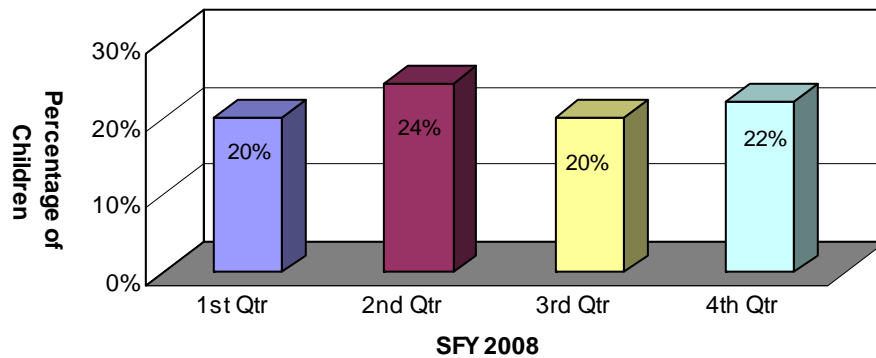
**Chart 5: Children in Foster Care who Returned Home within Eighteen Months**



***Percentage of Children in Foster Care who have Experienced Three or more Placements within the Past Eighteen Months***

Of the 1,040 children who entered foster care during the quarter 18 months prior to the current quarter, 230 children (22%) experienced three or more placements within 18 months. This was two percentage points higher than the previous quarter. Of those same 1,040 children, 179 (17%) experienced three or more placements within 15 months of entering foster care.

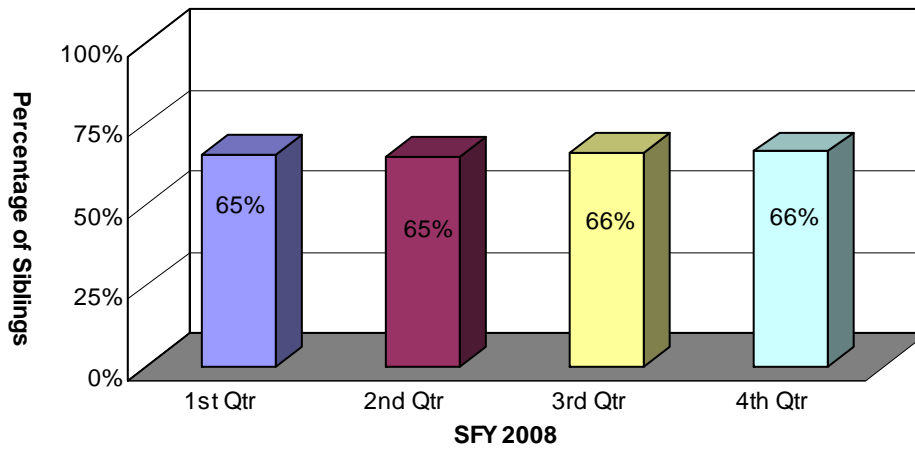
**Chart 6: Children in Foster Care who have Experienced Three or More Placements within the Past Eighteen Months**



***Percentage of Siblings in Placement who are Placed Together***

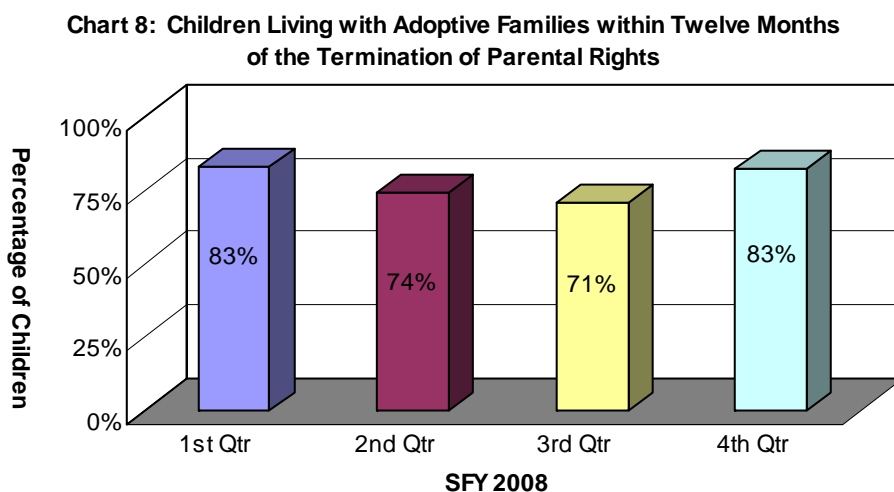
During the fourth quarter, there were 1,742 children with siblings in foster care. Sixty-six percent of those children (1,156 children) were placed with at least one of their siblings. This was the same as the previous quarter (66%) and higher than the same quarter ending one year ago (62%). Of those same 1,742 children, 793 (46%) were placed with all of their siblings, which was the same as the previous quarter. These figures do not exclude children who were placed separately for valid reasons such as safety issues or court orders.

**Chart 7: Siblings in Care who are Placed Together**



***Percentage of Children Living with Adoptive Families within Twelve Months of the Termination of Parental Rights***

Of the 86 children whose parents had their parental rights terminated between April and June 2007, 71 children (83%) were placed in adoptive homes within 12 months of the termination of parental rights. This was 12 percentage points higher than the previous quarter.



***Number of Children Placed in Pre-adoptive Homes whose Adoptions were Finalized within Twelve Months of Entering Pre-adoptive Placements***

Sixty-nine children were placed in a pre-adoptive home between April and June 2007. Of those, 58 children (84%) had their adoptions finalized within 12 months of being placed in a pre-adoptive home. This was one percentage point lower than the previous quarter and higher than the same quarter one year ago (74%). One child (1%) experienced a disruption, which occur when a child has been placed in a pre-adoptive home and the family or the child subsequently decides not to proceed with the adoption, resulting in the child leaving the home. Ten children still had adoptions pending finalization 12 months after a placement in an adoptive home.

**Table 1: Children Placed in Pre-adoptive Homes whose Adoptions were finalized within Twelve Months of Entering Pre-adoptive Placements  
4th Quarter SFY 2008**

Adoption Status	Number of Children
Children Placed in Pre-adoptive Homes	69
Finalized Adoption	58
Disrupted Adoptive Placements	1
Children with a Disruption who were Re-placed in Pre-adoptive Homes	0
Still Pending after Twelve Months	10

## PART II: COMPLIANCE INDEX

The Division has set compliance measures with guidance from the Joint Interim Committee on Children and Youth. An index is compiled by reporting the level of compliance in relation to these measures.

### **Goal    Compliance Measure**

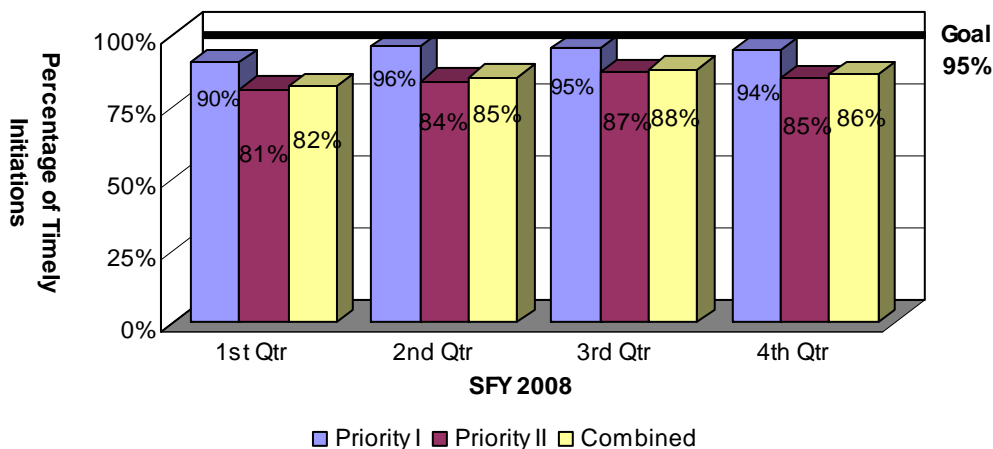
- 95%**    ***Timely Initiation of Child Maltreatment Assessments.*** Timely initiation means the investigator interviews or observes the victim child outside the presence of the alleged offender within 24 hours of any report of alleged severe maltreatment or within 72 hours otherwise.
- 90%**    ***Timely Completion of Child Maltreatment Assessments.*** Timely completion means a determination must be made regarding an allegation of child maltreatment within 30 days of receipt of the allegation.
- 95%**    ***24-Hour Initial Health Screenings.*** This screening is conducted within 24 hours after removal from the home on children who enter foster care due to an allegation of severe maltreatment or if there is evidence of acute illness or injury.
- 95%**    ***72-Hour Initial Health Screenings.*** This screening is conducted within 72 hours after removal from the home on all children who enter foster care who are not subject to the 24-hour screening.
- 95%**    ***Comprehensive Health Assessments.*** The purpose of this assessment is to evaluate the physical and mental health status of all foster children and is to be completed within 60 days of a child entering foster care.
- 80**      ***Foster Home Recruitment.*** DCFS must ensure that a sufficient number and homes variety of foster homes meeting minimal standards and matched to the needs and characteristics of foster children are available. The goal is 80 homes for the quarter or 320 homes for the year.
- 95%**    ***Foster Home Re-evaluations.*** DCFS must re-evaluate at least annually each foster home's ability to care for children.
- 85%**    ***Required Visits Made by Worker.*** DCFS must provide data on the percentage of monthly visits made by DCFS workers to children in foster care.

### ***Timely Initiation of Child Maltreatment Assessments***

Whenever there is an allegation of child maltreatment, a Family Service Worker, a Crimes Against Children Division (CACD) staff member, or staff from another local law enforcement agency must interview or observe the victim child outside the presence of the alleged offender within 72 hours of the report (Priority II), unless there is an allegation of severe maltreatment, in which case the interview or observation must occur within 24 hours of the report (Priority I). There were 7,699 referrals for child maltreatment assessments during the quarter. Of that number, 788 Priority I referrals and 5,207 Priority II referrals were assigned to DCFS for investigation. Of the DCFS Priority I referrals, 743 assessments were initiated within the required 24-hour period. Of the DCFS Priority II referrals, 4,412 assessments were initiated within the required 72-hour period.<sup>3</sup> The compliance rate was 94 percent for DCFS Priority I initiations and 85 percent for Priority II initiations, which resulted in a combined compliance rate of 86 percent. The combined compliance rate was two percentage points lower than the previous quarter.

As noted previously, the Crimes Against Children Division (CACD) of the Arkansas State Police is also responsible for handling child abuse assessments. CACD was responsible for 1,698 of the 7,699 referrals that came in during the quarter, of which 1,527 were Priority I referrals and 171 were Priority II referrals. Of the Priority I referrals, 1,518 assessments (99%) were initiated in a timely manner. Of the Priority II referrals, 165 assessments (97%) were initiated in a timely manner.

**Chart 9: Timely Initiation of Child Maltreatment Assessments**

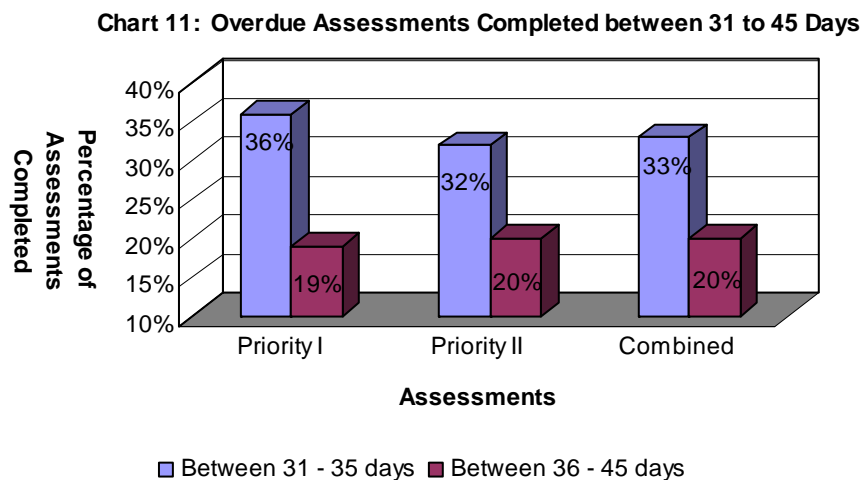
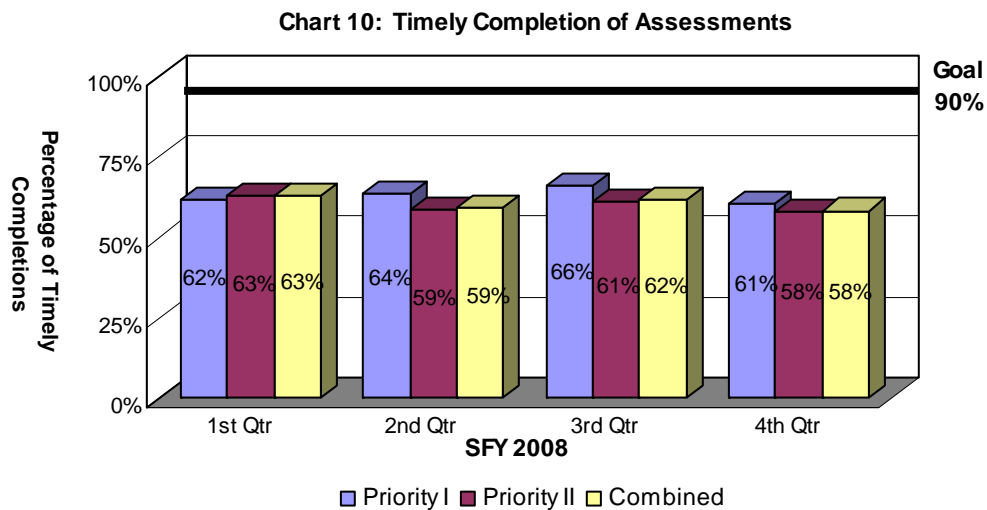


<sup>3</sup> DCFS had 743 Priority I referrals and 4,412 Priority II referrals that were initiated in a timely manner. Of those, 141 Priority I (19%) and 1,255 Priority II referrals (28%) were considered compliant due to reasonable diligence. CACD had 1,518 Priority I referrals and 165 Priority II referrals that were initiated in a timely manner. Of those, 267 Priority I (18%) and 38 Priority II (23%) referrals were considered compliant due to reasonable diligence.

**Timely Completion of Child Maltreatment Assessments**

Of the 788 DCFS Priority I assessments initiated, 479 (61%) were completed within the required 30-day period. Of the 5,207 DCFS Priority II assessments initiated, 3,024 (58%) were completed within the required 30-day period. Of the total 5,995 assessments assigned to DCFS, 3,503 were completed in a timely fashion. These completions resulted in a compliance rate of 58 percent, which was three percentage points lower than the third quarter and below the goal of 90 percent. (See plan of action in the Executive Summary.)

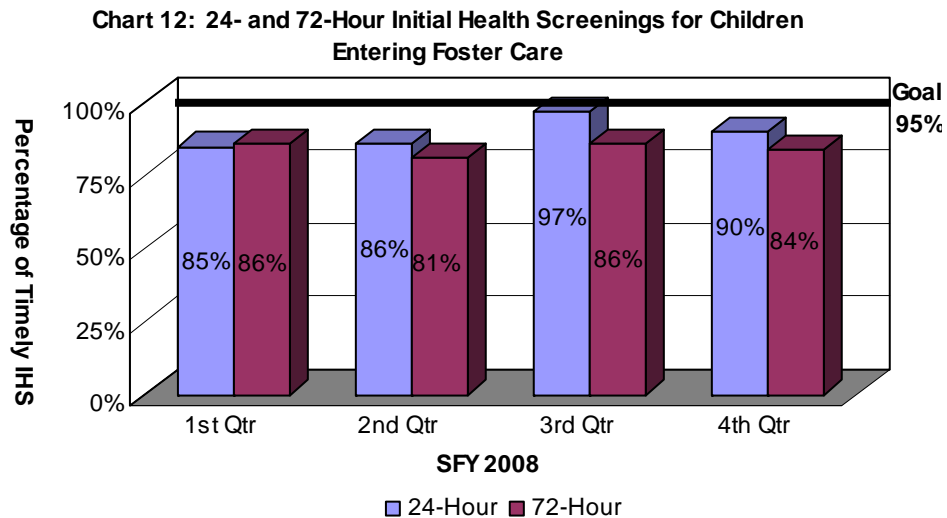
As referenced earlier, the Crimes Against Children Division (CACD) of the Arkansas State Police was responsible for 1,698 of the 7,699 incoming referrals during the quarter. Of that number, 1,527 were Priority I referrals and 171 were Priority II referrals. Of the Priority I assessments, 1,176 (77%) were completed timely. Of the Priority II assessments, 136 (80%) were completed timely.



### ***24- and 72-Hour Initial Health Screenings for Children Entering Foster Care***

When a child enters foster care due to an allegation of severe maltreatment or if there is evidence of acute illness or injury, DCFS must conduct an initial health screening within 24 hours of the child's removal from the home. Of the 175 children who required the 24-hour health screening during the fourth quarter, 158 children (90%) received the screening in a timely manner. The compliance rate was seven percentage points lower than the previous quarter and did not meet the goal of 95 percent.

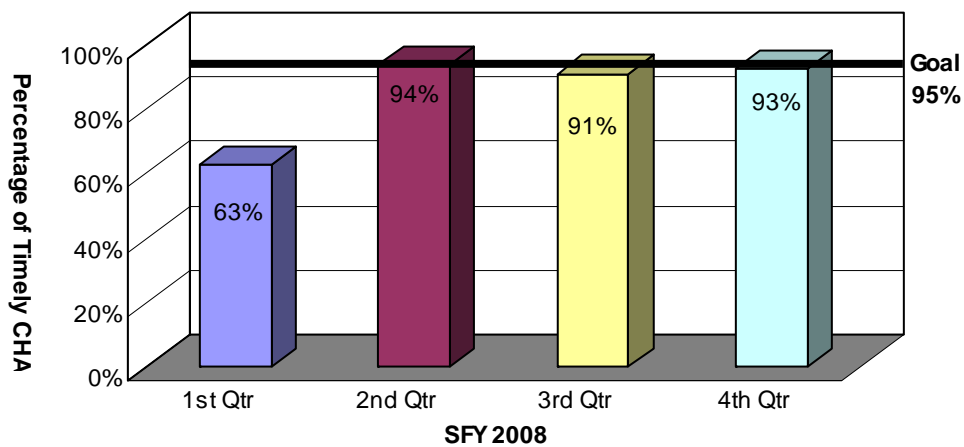
All children entering foster care who do not require the initial 24-hour health screening must still undergo an initial health screening within 72 hours of their removal. Of the 744 children who required the 72-hour health screening, 628 (84%) received their screenings in a timely manner, which was two percentage points lower than the previous quarter but did not meet the goal of 95 percent. (See plan of action in the Executive Summary.)



### ***Comprehensive Health Assessments***

All children entering foster care must receive a comprehensive health assessment that evaluates their physical and mental health status within 60 days of entering foster care. Between January 31, 2008, and April 2, 2008, 310 children entered foster care who remained in care for at least 60 days. Of those children, 287 received their comprehensive health assessment within 60 days after entering care. The resulting compliance rate was 93 percent, which was two percentage points higher than the previous quarter but below the goal of 95 percent. (See plan of action in the Executive Summary.)

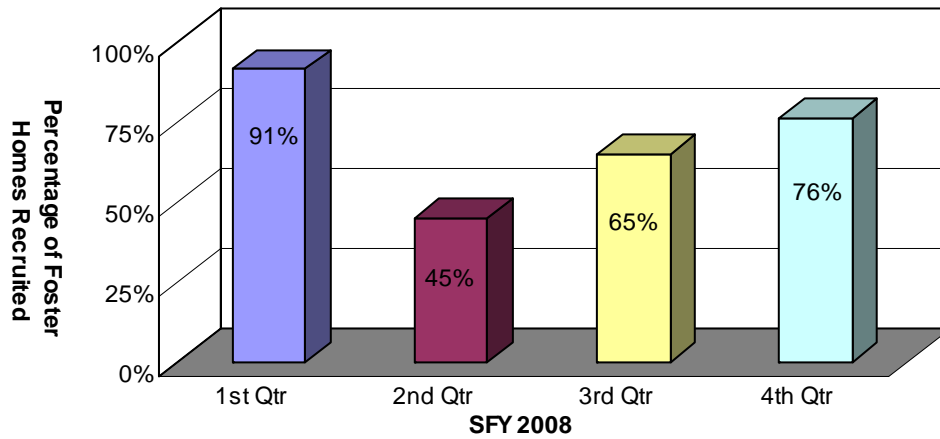
**Chart 13: Comprehensive Health Assessments**



### ***Foster Home Recruitment***

DCFS recruited 61 new foster homes during the fourth quarter, fewer than the goal of 80 new homes. The 76 percent compliance rate was 11 percentage points higher than the previous quarter (65%).

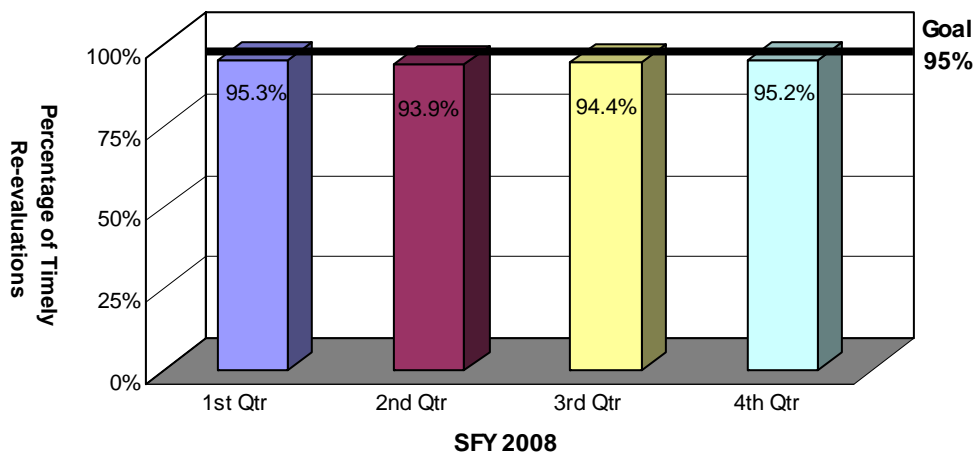
**Chart 14: Foster Home Recruitment**



### ***Foster Home Re-evaluations***

On an annual basis, at a minimum, DCFS conducts required re-evaluations of each foster home’s ability to care for children. Of the 1,045 foster homes active during the fourth quarter, staff completed current re-evaluations for 995 homes. The resulting 95.2 percent compliance rate was higher than the previous quarter and met the goal of 95 percent compliance.

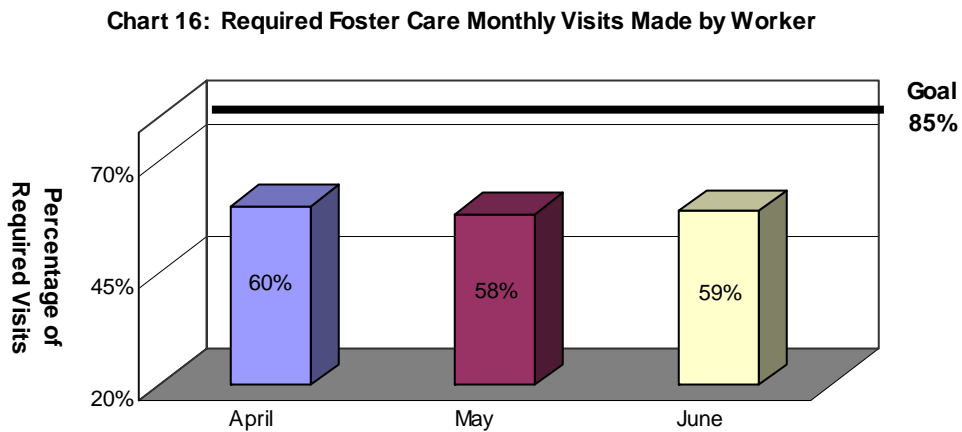
**Chart 15: Foster Home Re-evaluations**



***Required Visits Made by Worker***

DCFS acknowledges the importance of worker contact with children in foster care and believes that these visits should be conducted in the home as often as possible. However, DCFS also recognizes that face-to-face visits in other locations can also meet good practice objectives. Consequently, the measurement of required monthly visits with children in care considers face-to-face visits in any setting as compliant.

During the fourth quarter, the percentage of children who received a monthly visit averaged 59 percent from April to June, a decrease of eight percentage points from the previous quarter. (See plan of action in the Executive Summary.)



### **PART III: DESCRIPTION OF POPULATION AND SERVICES**

This section describes the number and status of maltreatment assessments; children who were served in foster care; and children who were provided adoption services.

Section I outlines characteristics of children in true maltreatment reports such as age, gender and ethnicity, and specifically compare state ethnicity data to national data. Additionally, this section defines the types of allegations in maltreatment reports.

Section II describes the foster care population. Specifically, it describes the characteristics of children in foster care; entries and exits of children in foster care; reasons children come into care; lengths of stay for children in foster care as well as children in relative care; placements of children in foster care; and the number of placements children experience while in care.

Section III reports adoption data such as the characteristics of children available for adoption; current placement of those children; characteristics of children placed in adoptive homes; children whose parents have terminated their parental rights but have not been placed in adoptive homes; finalized adoptions; and adoption subsidies.

## Part III: Description of Population and Services

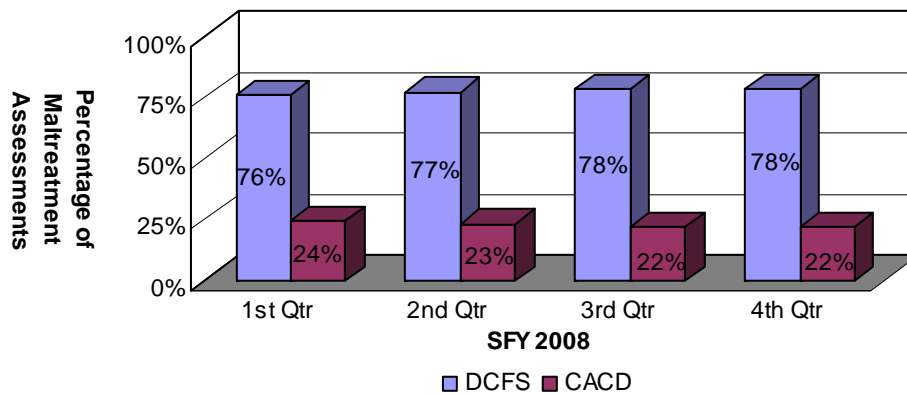
### Section I: True Child Maltreatment Reports

#### *Child Maltreatment Assessments*

During the fourth quarter, 7,699 maltreatment assessments were assigned between DCFS and CACD. Of those assessments, 6,001 (78%) were assigned to DCFS. This figure represented an increase in the number of assessments assigned to DCFS from the previous quarter (4,970), and the same number assigned from the same quarter ending one year ago (6,001). This has been a steady trend over the past three years.

Of those same 7,699 assessments, 1,698 (22%) were assigned to CACD. This figure represented an increase in the number of assessments assigned to CACD from the previous quarter (1,437), and a slight increase in the number assigned from the same quarter ending one year ago (1,688).

Chart 17a: Child Maltreatment Assessments



Of the 7,699 maltreatment assessments assigned during the fourth quarter of SFY 2008, 1,628 reports (21%) were found to be true, which was four percentage points lower than the same quarter one year ago (25%). The national percentage is 25 percent<sup>4</sup>. There were 2,346 victim children involved in the 1,628 true reports during the quarter, which represented a decrease in the number of victim children reported during the same quarter one year ago (2,842).

**Table 2: Child Maltreatment Assessments**

	<b>Total Assessments</b>	<b>True Assessments</b>	<b>Percent True</b>
<b>1st Qtr SFY 2008</b>	6,440	1,508	23%
<b>2nd Qtr SFY 2008</b>	7,134	1,595	22%
<b>3rd Qtr SFY 2008</b>	6,407	1,401	22%
<b>4th Qtr SFY 2008</b>	7,699	1,628	21%

---

<sup>4</sup> Source: Child Maltreatment 2005, Reports from the States to the National Child Abuse and Neglect Data System, U.S. Department of Health and Human Services, Administration for Children and Families, Administration on Children, Youth and Families, Children's Bureau.

**Characteristics of Children in True Maltreatment Reports**

As referenced previously, 2,346 victim children were involved in true reports during the fourth quarter. The table below outlines the demographic information for these victim children<sup>5</sup>.

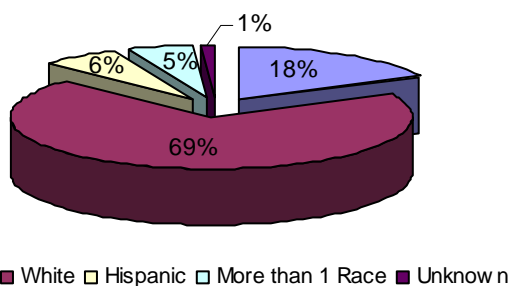
**Table 3: Characteristics of Children in True Maltreatment Reports  
4th Quarter SFY 2008**

Age	Gender	White	Black	Asian	AIAN	NAPI	Hispanic	More Than 1 Race	Total
0 to 1	Female	68	29	0	1	0	7	5	110
	Male	93	28	0	1	1	15	8	146
2 to 5	Female	185	40	1	0	0	16	13	255
	Male	182	43	3	0	1	24	13	266
6 to 11	Female	318	71	0	2	1	34	14	440
	Male	278	61	1	0	2	18	21	381
12 to 15	Female	224	68	3	0	0	22	13	330
	Male	130	29	0	0	0	5	13	177
16 to 18	Female	92	33	0	0	0	8	12	145
	Male	46	12	0	0	0	2	6	66
18+	Female	1	0	0	0	0	0	0	1
	Male	0	0	0	0	0	0	1	1
<b>Total*</b>		<b>1,617</b>	<b>414</b>	<b>8</b>	<b>4</b>	<b>5</b>	<b>151</b>	<b>119</b>	<b>2,318</b>

\*Demographic data had not been entered into CHRIS for 28 children.

Of the children involved in true maltreatment reports, 69 percent were white and 18 percent were black.

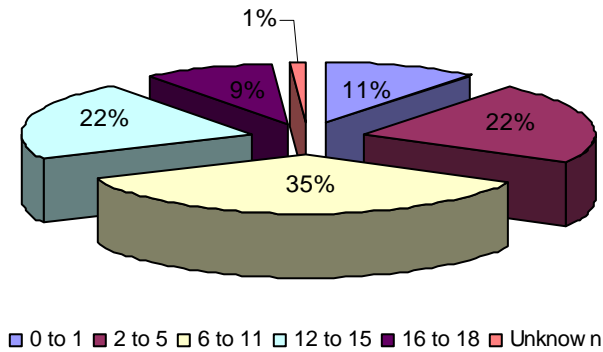
**Chart 17a: Ethnicity of Children in True Reports**



<sup>5</sup> Table three, and each subsequent demographic table, divides up “other” races and ethnicities into the following categories: “Hispanic,” “More than One Race,” “Asian” (includes Indonesian, Cambodian, Hmong and Vietnamese), “AIAN” (includes Native American, Alaskan Native and American Indian) and “NAPI” (includes Native Hawaiian and other Pacific Islanders).

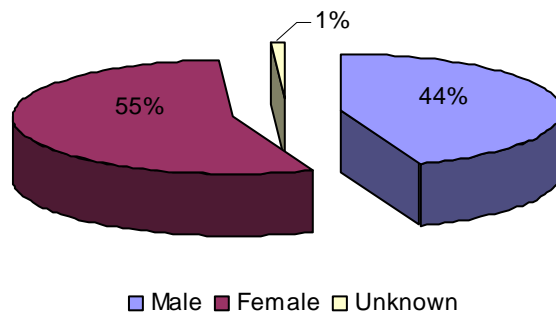
Children between the ages of 6 and 11 represented the largest group of children involved in true maltreatment reports (35%). These percentages were similar to the previous quarter.

**Chart 17b: Ages of Children in True Reports**



More female children (55%) than male children (44%) were involved in true maltreatment reports. These percentages were also similar to the previous quarter.

**Chart 17c: Gender of Children in True Reports**



***Children Involved in Allegations of True Maltreatment Reports***

During the quarter, the majority of the 2,346 children involved in true maltreatment reports were involved in neglect allegations (77%), followed by physical abuse allegations (35%) and sexual abuse allegations (33%)<sup>6</sup>.

**Table 4: Percentage of Children Involved in True Allegations of Maltreatment  
3rd Quarter SFY 2008 – 4th Quarter SFY 2008**

	3rd Quarter		4th Quarter	
<b>Neglect</b>	1,600	78%	1,820	77%
<b>Physical Abuse</b>	735	36%	835	35%
<b>Sexual Abuse</b>	665	32%	787	33%

---

<sup>6</sup> The total number of children represented will outnumber the total children involved in true maltreatment reports because a child can be involved in more than one allegation. Therefore, the sum of percentages of children involved in maltreatment reports will be greater than 100 percent.

## Part III: Description of Population and Services

### Section II: Foster Care

#### *Characteristics of Children in Foster Care*

During the quarter, 4,563 children were in foster care. This number includes children who remained in care from previous quarters as well as children who came into care during the quarter. The following table outlines the characteristics of children who were in care during the quarter.

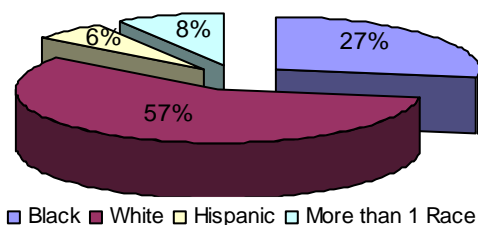
**Table 5: Characteristics of Children in Foster Care During the Quarter**  
4th Quarter SFY 2008

Age	Gender	White	Black	Asian	AIAN	NAPI	Hispanic	More Than 1 Race	Total
0 to 1	Female	198	91	0	2	1	28	25	<b>345</b>
	Male	171	89	0	2	1	32	39	<b>334</b>
2 to 5	Female	287	131	1	0	0	35	50	<b>504</b>
	Male	312	147	0	3	1	43	52	<b>558</b>
6 to 11	Female	310	138	0	0	0	32	32	<b>512</b>
	Male	351	158	0	2	0	38	51	<b>600</b>
12 to 15	Female	253	128	0	0	0	28	31	<b>440</b>
	Male	237	113	1	1	0	12	49	<b>413</b>
16 to 18	Female	216	96	3	0	0	18	28	<b>361</b>
	Male	170	76	0	1	0	10	17	<b>274</b>
18+	Female	60	41	1	0	0	3	6	<b>111</b>
	Male	52	35	2	0	1	3	4	<b>97</b>
<b>Total*</b>		<b>2,617</b>	<b>1,243</b>	<b>8</b>	<b>11</b>	<b>4</b>	<b>282</b>	<b>384</b>	<b>4,549</b>

\*Demographic information had not been entered into CHRIS for 14 children.

The chart below shows that 57 percent of the children in foster care during the quarter were white and 27 percent were black. National data reveal that only 41 percent of the children in the national foster care system were white, while 32 percent of the children were black<sup>7</sup>.

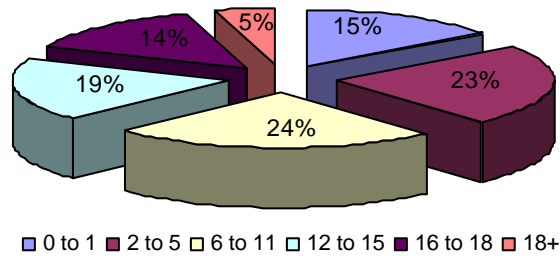
**Chart 18a: Ethnicity of Children in Care During the Quarter**



<sup>7</sup> Adoption and Foster Care Analysis and Reporting System (AFCARS) preliminary data submitted for children in foster care between 10/1/2004 and 9/30/2005 as of September 2006.

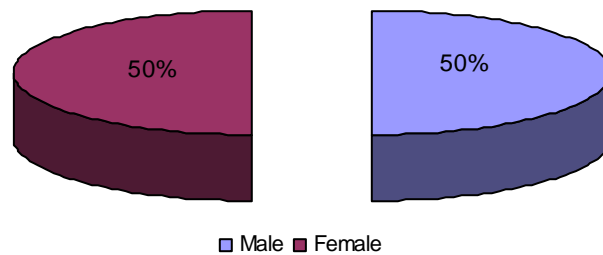
The following chart shows that children between the ages of 6 to 11 (24%) represented the largest groups of children who were in care during the quarter. These percentages were similar to the previous quarter.

**Chart 18b: Ages of Children in Foster Care During the Quarter**



The following chart shows that 50 percent of the children in foster care during the quarter were female and 50 percent were male. These percentages were also similar to the previous quarter.

**Chart 18c: Gender of Children in Foster Care During the Quarter**



At the end of the quarter, 3,694 children were in foster care, an increase from the 3,679 children in care at the end of the third quarter. The following table outlines the characteristics of the children in foster care at the end of the fourth quarter.

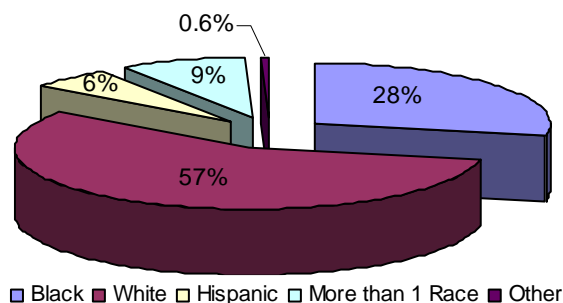
**Table 6: Characteristics of Children in Foster Care at the End of the Quarter  
4th Quarter SFY 2008**

Age	Gender	White	Black	Asian	AIAN	NAPI	Hispanic	More Than 1 Race	Total
0 to 1	Female	151	72	0	2	1	23	20	<b>269</b>
	Male	138	82	0	2	1	22	32	<b>277</b>
2 to 5	Female	219	108	0	0	0	27	38	<b>392</b>
	Male	237	121	0	3	0	24	42	<b>427</b>
6 to 11	Female	246	109	0	0	0	26	29	<b>410</b>
	Male	275	130	0	2	0	33	41	<b>481</b>
12 to 15	Female	204	106	0	0	0	19	26	<b>355</b>
	Male	200	94	1	1	0	10	40	<b>346</b>
16 to 18	Female	195	85	3	0	0	17	26	<b>326</b>
	Male	154	71	0	1	0	8	15	<b>249</b>
18+	Female	41	32	1	0	0	2	5	<b>81</b>
	Male	36	28	2	0	1	3	4	<b>74</b>
<b>Total*</b>		<b>2,096</b>	<b>1,038</b>	<b>7</b>	<b>11</b>	<b>3</b>	<b>214</b>	<b>318</b>	<b>3,687</b>

\*Demographic information had not been entered into CHRIS for seven children.

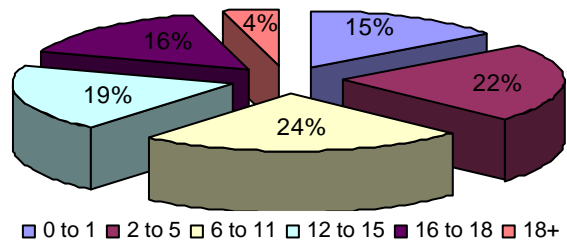
The chart below shows that 57 percent of the children in foster care at the end of the quarter were white, while 28 percent of the children were black. These percentages were consistent with the previous four quarters.

**Chart 19a: Ethnicity of Children in Foster Care at the End of the Quarter**



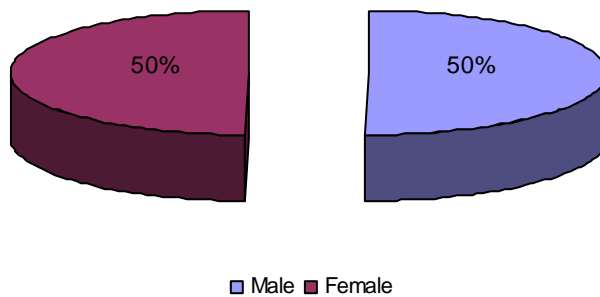
The following chart shows that children between the ages of 6 to 11 (24%) represented the largest group of children who were in care at the end of the quarter.

**Chart 19b: Ages of Children in Foster Care at the End of the Quarter**



The following chart shows that 50 percent of the children in foster care at the end of the quarter were female and 50 percent were male. These percentages were also similar to the previous quarter.

**Chart 19c: Gender of Children in Foster Care at the End of the Quarter**



**Entries into Foster Care**

The data show that 999 children entered foster care during the fourth quarter, an increase from the third quarter (904).

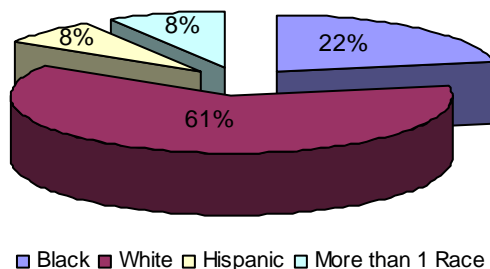
**Table 7: Characteristics of Children Entering Foster Care During the Quarter  
4th Quarter SFY 2008**

Age	Gender	White	Black	Asian	AIAN	NAPI	Hispanic	More Than 1 Race	Total
0 to 1	Female	73	28	0	0	1	9	6	117
	Male	71	23	0	0	1	16	10	121
2 to 5	Female	66	21	1	0	0	10	10	108
	Male	73	33	0	0	1	14	10	131
6 to 11	Female	70	24	0	0	0	3	11	108
	Male	87	36	0	0	0	9	13	145
12 to 15	Female	58	28	0	0	0	8	4	98
	Male	52	12	0	0	0	0	11	75
16 to 18	Female	38	11	0	0	0	3	7	59
	Male	21	5	0	0	0	3	2	31
<b>Total*</b>		<b>609</b>	<b>221</b>	<b>1</b>	<b>0</b>	<b>3</b>	<b>75</b>	<b>84</b>	<b>993</b>

\*Demographic data had not been entered into CHRIS for six children.

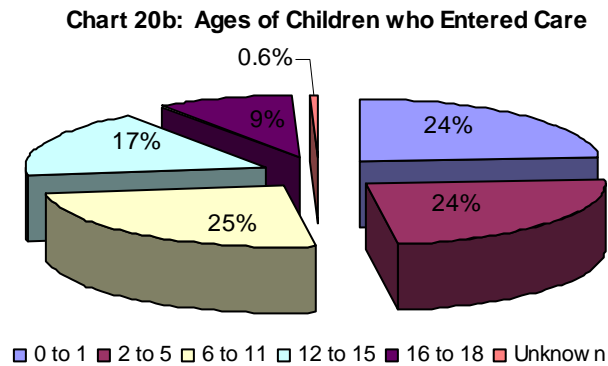
The chart below shows that 61 percent of the children who entered foster care during the quarter were white, while 22 percent of the children were black. National data indicate that 47 percent of the children who entered care were white, 26 percent were black and 18 percent were Hispanic<sup>8</sup>.

**Chart 20a: Ethnicity of Children who Entered Care**

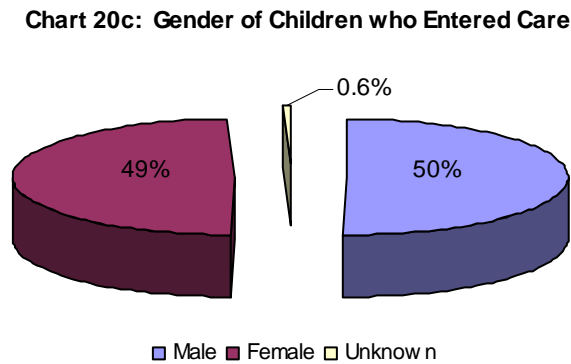


<sup>8</sup> Adoption and Foster Care Analysis and Reporting System (AFCARS) preliminary data submitted for children in foster care between 10/1/2004 and 9/30/2005 as of September 2006.

The following chart shows that children between the ages of 6 and 11 (25%) represented the largest group of children who entered foster care during the quarter.



The following chart shows the gender of the children who entered foster care during the fourth quarter. Of the 999 children who entered care, 50 percent of the children were male and 49 percent were female.



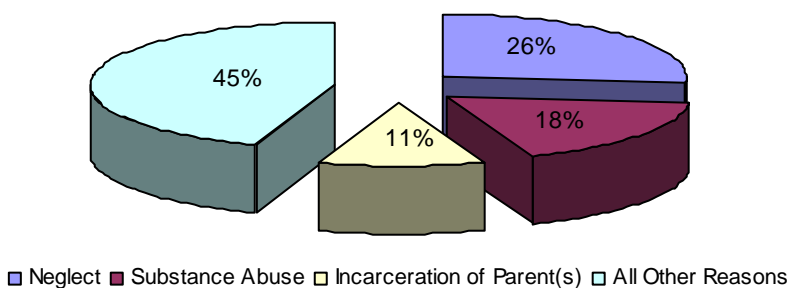
The reasons for entry into foster care during the quarter (Table 8) remained very similar to the reasons for children’s entry into care at the end of the quarter (Table 9). Neglect and substance abuse<sup>9</sup> were the most prevalent reasons for children’s entry into care.

**Table 8: Reasons Children were Placed in Foster Care During the Quarter by Age  
4th Quarter SFY 2008**

	0 to 1	2 to 5	6 to 11	12 to 15	16 to 18	18+	Total
<b>Neglect</b>	443	565	621	400	121	1	<b>2,151</b>
<b>Substance Abuse</b>	397	334	353	262	85	0	<b>1,431</b>
<b>Parent Incarceration</b>	196	254	270	157	43	0	<b>920</b>
<b>Physical Abuse</b>	162	202	200	187	67	0	<b>818</b>
<b>Child’s Behavior</b>	0	0	92	235	107	3	<b>437</b>
<b>Abandonment</b>	37	64	109	112	69	0	<b>391</b>
<b>Inadequate Housing</b>	120	154	201	126	26	0	<b>627</b>
<b>Caretaker Illness</b>	92	102	119	136	56	3	<b>508</b>
<b>Sexual Abuse</b>	22	83	146	147	29	0	<b>427</b>
<b>Truancy</b>	0	0	40	70	25	0	<b>136</b>
<b>Child’s Disability</b>	8	12	18	18	1	1	<b>58</b>
<b>Parent Death</b>	4	6	16	15	11	0	<b>52</b>
<b>Sex Offender</b>	0	0	12	23	7	1	<b>43</b>
<b>Relinquishment</b>	2	4	5	7	2	0	<b>20</b>
<b>Adoption</b>	0	0	0	2	0	0	<b>2</b>
<b>Managed Mental Health</b>	0	0	1	1	1	0	<b>3</b>
<b>Other</b>	2	2	23	7	0	0	<b>34</b>
<b>Teen Parent in Care</b>	63	6	0	0	0	0	<b>69</b>
<b>Total*</b>	<b>1,548</b>	<b>1,788</b>	<b>2,226</b>	<b>1,905</b>	<b>650</b>	<b>10</b>	<b>8,127</b>

\*There are more reasons for entry than children in care because a child may have more than one reason for entry.

**Chart 21: Reasons Children in Care During the Quarter  
were Placed in Foster Care**



<sup>9</sup> Of the 1,431 reasons for entry attributed to substance abuse, substance abuse by children accounted for 77 reasons for entry (5%), while substance abuse by parents accounted for 1,354 reasons for entry (95%).

**Table 9: Reasons Children in Foster Care at the End of the Quarter were Placed in Care  
4th Quarter SFY 2008**

	White	Black	Asian	AIAN	NAPI	His-panic	More Than 1 Race	Total
<b>Neglect</b>	1,037	470	4	6	2	104	146	<b>1,769</b>
<b>Substance Abuse</b>	722	270	2	5	0	243	93	<b>1,155</b>
<b>Parent Incarceration</b>	423	160	0	4	1	62	62	<b>712</b>
<b>Physical Abuse</b>	359	209	3	1	0	36	59	<b>667</b>
<b>Child's Behavior</b>	239	89	2	1	0	10	30	<b>372</b>
<b>Abandonment</b>	163	119	0	0	1	18	30	<b>331</b>
<b>Inadequate Housing</b>	297	170	0	1	0	23	45	<b>536</b>
<b>Caretaker Illness</b>	290	87	1	5	0	18	44	<b>445</b>
<b>Sexual Abuse</b>	222	84	2	0	0	15	22	<b>345</b>
<b>Truancy</b>	73	26	0	0	0	5	13	<b>117</b>
<b>Child's Disability</b>	37	11	0	0	0	2	2	<b>52</b>
<b>Parent Death</b>	29	9	0	1	0	0	7	<b>46</b>
<b>Sex Offender</b>	31	6	0	0	0	0	3	<b>40</b>
<b>Relinquishment</b>	10	6	0	0	0	0	4	<b>20</b>
<b>Adoption</b>	1	1	0	0	0	0	0	<b>2</b>
<b>Managed Mental Health</b>	1	1	0	0	0	0	0	<b>2</b>
<b>Other</b>	13	18	0	0	0	0	2	<b>33</b>
<b>Teen Parent in Care</b>	19	29	0	0	0	10	4	<b>62</b>
<b>Total*</b>	<b>3,967</b>	<b>1,765</b>	<b>14</b>	<b>24</b>	<b>4</b>	<b>367</b>	<b>566</b>	<b>6,706</b>

\*There are more reasons for entry than children in care because a child may have more than one reason for entry.

***Exits from Foster Care***

During the quarter, 952 children left foster care, which was an increase from the previous quarter (789).

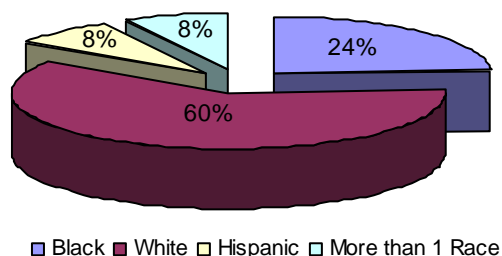
**Table 10: Characteristics of Children Exiting Foster Care During the Quarter  
4th Quarter SFY 2008**

Age	Gender	White	Black	Asian	AIAN	NAPI	Hispanic	More Than 1 Race	Total
0 to 1	Female	49	20	0	0	0	5	6	80
	Male	41	8	0	0	0	12	7	68
2 to 5	Female	75	25	1	0	0	8	13	122
	Male	83	29	0	0	1	20	13	146
6 to 11	Female	68	31	0	0	0	7	3	109
	Male	78	32	0	0	0	6	10	126
12 to 15	Female	51	22	0	0	0	10	6	89
	Male	38	20	0	0	0	2	10	70
16 to 18	Female	38	24	0	0	0	2	2	66
	Male	32	10	0	0	0	2	2	46
18+	Female	7	3	0	0	0	0	1	11
	Male	7	4	0	0	0	0	0	11
<b>Total*</b>		<b>567</b>	<b>228</b>	<b>1</b>	<b>0</b>	<b>1</b>	<b>74</b>	<b>73</b>	<b>944</b>

\*Demographic data had not been entered into CHRIS for eight children.

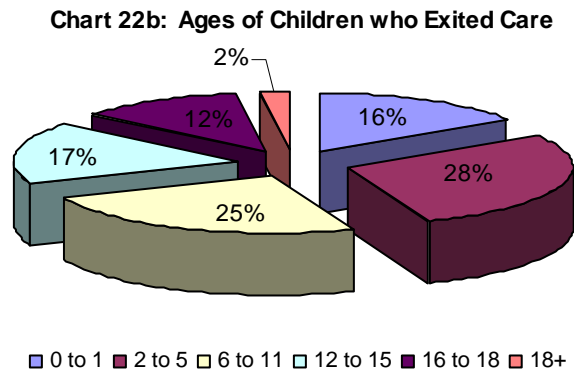
Of the 952 children who exited foster care, 60 percent were white and 24 percent were black. National data indicate that 45 percent of the children who left foster care were white and 28 percent were black<sup>10</sup>. During the same quarter one year ago, 60 percent of the children who exited foster care were white, whereas 28 percent were black.

**Chart 22a: Ethnicity of Children who Exited Care**

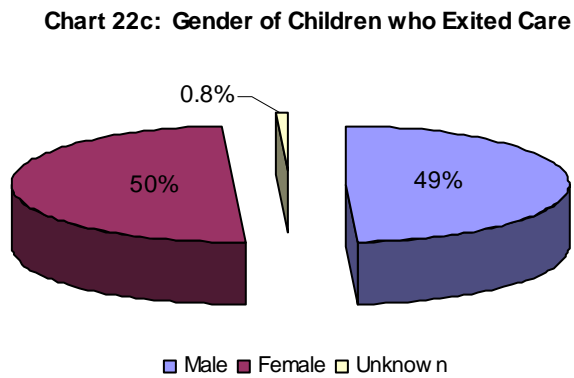


<sup>10</sup> Adoption and Foster Care Analysis and Reporting System (AFCARS) preliminary data submitted for children in foster care between 10/1/2004 and 9/30/2005 as of September 2006.

The following chart shows that children between the ages of 2 and 5 (28%) represented the largest group of children who left foster care during the quarter.



Of the children who left care during the quarter, 50 percent were female and 49 percent were male.



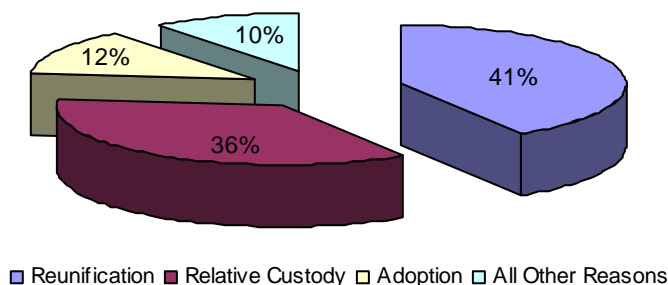
**Table 11: Reasons Children Exited Foster Care by Age  
4th Quarter SFY 2008**

Reason	Age						Total
	0 to 1	2 to 5	6 to 11	12 to 15	16 to 18	18+	
Reunification	71	110	97	77	33	0	<b>388</b>
Relative Custody	65	90	95	63	26	0	<b>339</b>
Adoption	8	59	36	12	3	0	<b>118</b>
Child Aged Out	0	0	0	0	43	21	<b>64</b>
Non-Relative Custody	2	8	6	6	3	0	<b>25</b>
Custody Transfer	1	0	1	0	1	0	<b>3</b>
Emancipation	0	0	0	0	3	1	<b>4</b>
Death of Child	1	1	0	1	0	0	<b>3</b>
<b>Total*</b>	<b>148</b>	<b>268</b>	<b>235</b>	<b>159</b>	<b>112</b>	<b>22</b>	<b>944</b>

\*Demographic data had not been entered into CHRIS for eight children.

The most prevalent reason that children left foster care during the quarter was reunification (41%). The second most prevalent reason was relative custody (36%). National data indicate that the three most prevalent reasons children left care were reunification (54%), adoption (18%) and relative care (11%)<sup>11</sup>.

**Chart 23: Most Prevalent Reasons Children Left Care**



<sup>11</sup> Adoption and Foster Care Analysis and Reporting System (AFCARS) preliminary data submitted for children in foster care between 10/1/2004 and 9/30/2005 as of September 2006.

***Permanency Goals of Children in Foster Care***

The Division maintains two primary goals for children in foster care: safety and permanency. The second of these concerns is expressed by setting a permanency goal for each child in foster care. For the fourth quarter, returning home remained the most prevalent goal among children in foster care at 47 percent. National data reveal very similar figures to the numbers shown here<sup>12</sup>.

**Table 12: Permanency Goals of Children in Foster Care  
3rd Quarter SFY 2008 – 4th Quarter SFY 2008**

	3rd Quarter		4th Quarter		National
<b>Return Home</b>	1,726	47%	1,754	47%	51%
<b>Adoption</b>	877	24%	884	24%	20%
<b>Independence</b>	585	16%	594	16%	n/a
<b>Remain at Home</b>	120	3%	138	4%	n/a
<b>Relative Care</b>	131	4%	117	3%	4%
<b>Guardianship</b>	22	.6%	22	.6%	3%
<b>Emancipation</b>	2	.05%	2	.05%	6%
<b>Long Term Care</b>	0	0%	0	0%	7%
<b>Not Yet Established</b>	216	6%	183	5%	8%
<b>Total*</b>	<b>3,679</b>	<b>100%</b>	<b>3,694</b>	<b>100%</b>	<b>100%</b>

\*Sum of individual percentages may not equal 100% due to rounding.

---

<sup>12</sup> Adoption and Foster Care Analysis and Reporting System (AFCARS) preliminary data submitted for children in foster care between 10/1/2004 and 9/30/2005 as of September 2006.

***Length of Stay of Children in Foster Care***

For the 4,563 children in foster care during the quarter, 52 percent were in care less than one year. A comparison to national data indicates that children in the state’s foster care system remain in care a decidedly shorter amount of time<sup>13</sup>.

**Table 13a: Length of Stay of Children in Foster Care (Including Relative Care)  
4th Quarter SFY 2008**

	<b>Number</b>	<b>Percentage*</b>	<b>National</b>
<b>Less than 30 days</b>	489	11%	5%
<b>30-90 Days</b>	626	14%	20%
<b>3-6 Months</b>	517	11%	
<b>6-12 Months</b>	755	17%	17%
<b>12-24 Months</b>	980	21%	21%
<b>24-36 Months</b>	483	11%	12%
<b>36+ Months</b>	713	16%	25%
<b>Total</b>	<b>4,563</b>	<b>100%</b>	<b>100%</b>

\*Sum of individual percentages may not equal 100% due to rounding.

**Table 13b: Length of Stay of Children in Relative Care  
4th Quarter SFY 2008**

	<b>Number</b>	<b>Percentage*</b>
<b>Less than 30 days</b>	16	4%
<b>30-90 Days</b>	41	10%
<b>3-6 Months</b>	47	11%
<b>6-12 Months</b>	91	21%
<b>12-24 Months</b>	151	35%
<b>24-36 Months</b>	38	9%
<b>36+ Months</b>	46	11%
<b>Total*</b>	<b>430</b>	<b>100%</b>

\*Sum of individual percentages may not equal 100% due to rounding.

**Table 13c: Length of Stay of Children in Foster Care (Excluding Relative Care)  
4th Quarter SFY 2008**

	<b>Number</b>	<b>Percentage*</b>
<b>Less than 30 days</b>	473	11%
<b>30-90 Days</b>	585	14%
<b>3-6 Months</b>	470	11%
<b>6-12 Months</b>	664	16%
<b>12-24 Months</b>	829	20%
<b>24-36 Months</b>	445	11%
<b>36+ Months</b>	667	16%
<b>Total</b>	<b>4,133</b>	<b>100%</b>

\*Sum of individual percentages may not equal 100% due to rounding.

<sup>13</sup> Adoption and Foster Care Analysis and Reporting System (AFCARS) preliminary data submitted for children in foster care between 10/1/2004 and 9/30/2005 as of September 2006.

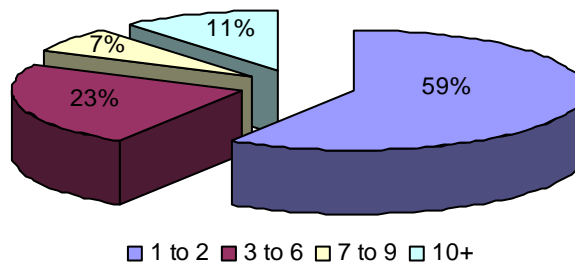
***Number of Placements of Children in Foster Care***

At the end of the fourth quarter, 59 percent of children in care experienced two or fewer placements, which was the same as the previous quarter.

**Table 14: Number of Placements of Children in Foster Care  
3rd Quarter SFY 2008 – 4th Quarter SFY 2008**

	3rd Quarter		4th Quarter	
<b>1-2 Placements</b>	2,169	59%	2,180	59%
<b>3-6 Placements</b>	850	23%	853	23%
<b>7-9 Placements</b>	242	7%	247	7%
<b>10+ Placements</b>	418	11%	414	11%
<b>Total*</b>	<b>3,679</b>	<b>100%</b>	<b>3,694</b>	<b>100%</b>

**Chart 24: Number of Placements for Children in Care at the End of the Quarter**



**Characteristics of Children who Experienced Two or More Placements**

At the end of the fourth quarter, 3,694 children were in foster care. Of those children, 2,065 experienced two or more placements while in care.

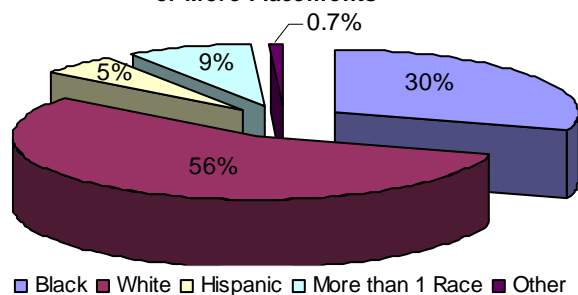
**Table 15: Characteristics of Children who Experienced Two or More Placements  
4th Quarter SFY 2008**

Age	Gender	White	Black	Asian	AIAN	NAPI	Hispanic	More Than 1 Race	Total
0 to 1	Female	36	13	0	2	0	7	4	62
	Male	44	22	0	1	0	7	9	83
2 to 5	Female	102	52	0	0	0	10	16	180
	Male	106	52	0	3	0	11	18	190
6 to 11	Female	124	66	0	0	0	14	16	220
	Male	175	76	0	2	0	23	25	301
12 to 15	Female	127	78	0	0	0	14	21	240
	Male	141	76	1	1	0	6	34	259
16 to 18	Female	162	95	2	0	0	10	20	289
	Male	133	83	1	1	1	7	14	240
18+	Female	0	0	0	0	0	0	0	0
	Male	0	0	0	0	0	0	0	0
<b>Total</b>		<b>1,150</b>	<b>613</b>	<b>4</b>	<b>10</b>	<b>1</b>	<b>109</b>	<b>177</b>	<b>2,064</b>

\*Demographic data had not been entered into CHRIS for one child.

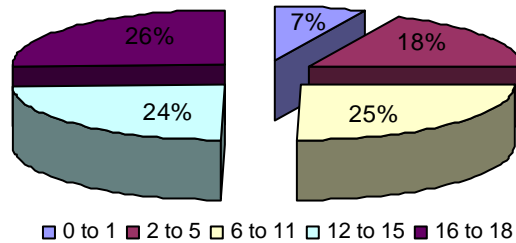
Of the 2,065 children who experienced two or more placements, 56 percent were white and 30 percent were black. These percentages were similar to the previous quarter.

**Chart 25a: Ethnicity of Children who Experienced Two or More Placements**



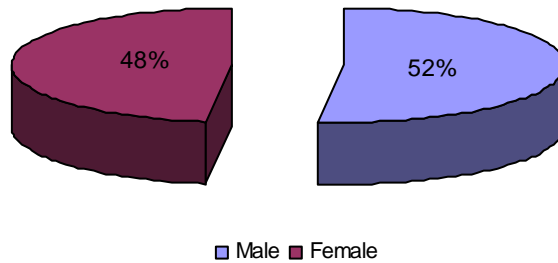
Children between the ages of 16 and 18 (26%) represented the largest group of children who experienced two or more placements.

**Chart 25b: Ages of Children who Experienced Two or More Placements**



More male children (52%) than female children (48%) experienced two or more placements, similar to the previous quarter.

**Chart 25c: Gender of Children who Experienced Two or More Placements**



**Current Placement of Children in Foster Care**

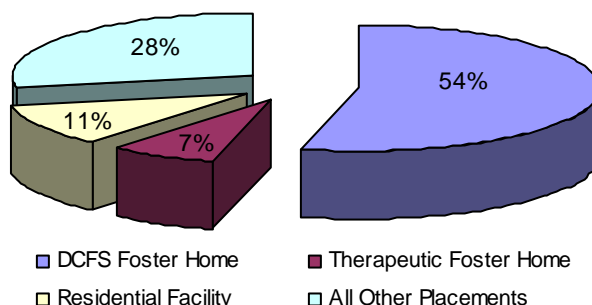
More children in foster care were placed in DCFS foster homes (54%) at the end of the fourth quarter than in any other type of foster care placement.

**Table 16: Current Placement of Children in Foster Care at the End of the Quarter**

Placement	Age						Total
	0 to 1	2 to 5	6 to 11	12 to 15	16 to 18	Over 18	
DCFS Foster Home	436	590	453	260	211	54	<b>2,004</b>
Relative Care	22	32	33	29	8	1	<b>125</b>
Therapeutic Foster Home	2	30	132	73	33	4	<b>274</b>
Pre-Adoptive Home	25	81	65	16	1	0	<b>188</b>
Emergency Shelter	8	5	39	40	25	2	<b>119</b>
Residential Facility	20	20	68	137	118	29	<b>392</b>
Youth Services	0	0	0	9	19	2	<b>30</b>
Runaway	1	0	3	7	58	1	<b>70</b>
Trial Home Visit	29	44	46	19	18	2	<b>158</b>
Hospital/Medical	3	4	3	17	6	0	<b>33</b>
ASAP CRT	0	0	3	6	2	0	<b>11</b>
Independent Living	0	0	0	1	9	53	<b>63</b>
Incarceration	0	0	0	5	15	4	<b>24</b>
Temporary Placement	1	9	8	8	3	1	<b>30</b>
Sub-Acute CRT	0	1	27	51	27	0	<b>106</b>
Acute CRT	0	1	10	15	6	0	<b>32</b>
High Risk Emergency Crisis Center	0	0	2	0	1	0	<b>3</b>
ASAP Residential Treatment	0	0	0	4	12	1	<b>17</b>
ASAP Therapeutic Foster Care	0	0	0	4	4	1	<b>9</b>
Unknown*	3	2	1	0	0	0	<b>6</b>
<b>Total</b>	<b>550</b>	<b>819</b>	<b>893</b>	<b>701</b>	<b>576</b>	<b>155</b>	<b>3,694</b>

\*Unknown due to data entry after data were collected for the report.

**Chart 26: Current Placement of Children in Foster Care**



**Characteristics of Children on Runaway Status at the End of the Quarter**

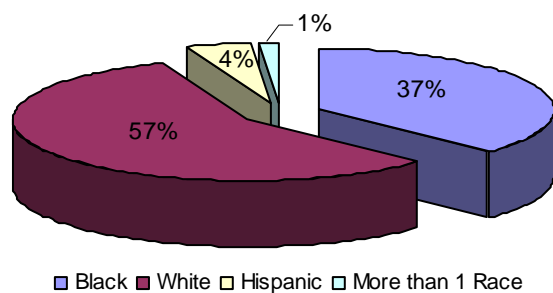
Seventy children were on runaway status at the end of the fourth quarter. This number represented a decrease from the previous quarter (76).

**Table 17: Characteristics of Children on Runaway Status at the End of the Quarter  
4th Quarter SFY 2008**

Age	Gender	White	Black	Asian	AIAN	NAPI	Hispanic	More Than 1 Race	Total
0 to 1	Female	1	0	0	0	0	0	0	1
	Male	0	0	0	0	0	0	0	0
2 to 5	Female	0	0	0	0	0	0	0	0
	Male	0	0	0	0	0	0	0	0
6 to 11	Female	1	0	0	0	0	0	0	1
	Male	1	0	0	0	0	1	0	2
12 to 15	Female	2	2	0	0	0	0	0	4
	Male	2	1	0	0	0	0	0	3
16 to 18	Female	20	15	0	0	0	1	1	36
	Male	13	8	0	0	0	1	0	22
18+	Female	0	0	0	0	0	0	0	1
	Male	0	0	0	0	0	0	0	0
<b>Total</b>		<b>40</b>	<b>26</b>	<b>0</b>	<b>0</b>	<b>0</b>	<b>3</b>	<b>1</b>	<b>70</b>

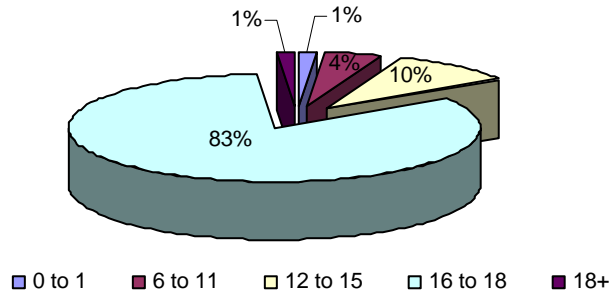
Of the children on runaway status at the end of the quarter, 57 percent were white and 37 percent were black. These percentages differed from the end of the second quarter, when 47 percent were white and 38 percent were black.

**Chart 27a: Ethnicity of Children on Runaway Status at the End of the Quarter**



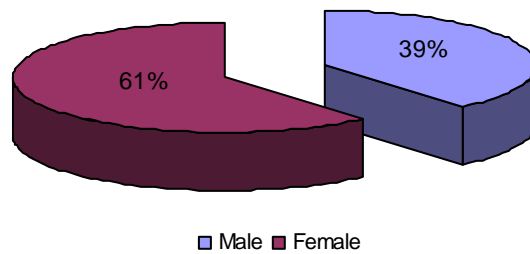
At the end of the quarter, 80 percent of the children on runaway status were between the ages of 16 and 18, which was a nine percentage point increase over the previous quarter (71%).

**Chart 27b: Ages of Children on Runaway Status at the End of the Quarter**



More female children (61%) than male children (39%) were on runaway status at the end of the quarter. This was similar to the previous quarter.

**Chart 27c: Gender of Children on Runaway Status at the End of the Quarter**



**Characteristics of Children in Relative Care**

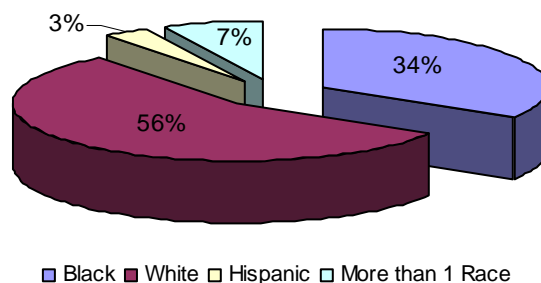
During the fourth quarter, 430 children were in relative care, a decrease from the previous quarter (453). This number includes children who remained in relative care from previous quarters as well as children who came into relative care during the fourth quarter. The following table outlines the characteristics of children in relative care.

**Table 18: Characteristics of Children in Relative Care  
4th Quarter SFY 2008**

Age	Gender	White	Black	Asian	AIAN	NAPI	Hispanic	More Than 1 Race	Total
0 to 1	Female	18	12	0	0	0	2	2	34
	Male	13	13	0	0	0	2	3	31
2 to 5	Female	34	19	0	0	0	3	4	60
	Male	39	22	0	0	0	2	2	65
6 to 11	Female	36	24	0	0	0	1	6	67
	Male	35	9	0	0	0	0	6	50
12 to 15	Female	28	10	0	0	0	0	2	40
	Male	16	15	0	0	0	0	6	37
16 to 18	Female	17	10	0	0	0	2	0	29
	Male	3	8	1	0	0	2	0	14
Over 18	Female	0	2	0	0	0	0	0	2
	Male	0	1	0	0	0	0	0	1
<b>Total</b>		<b>239</b>	<b>145</b>	<b>1</b>	<b>0</b>	<b>0</b>	<b>14</b>	<b>31</b>	<b>430</b>

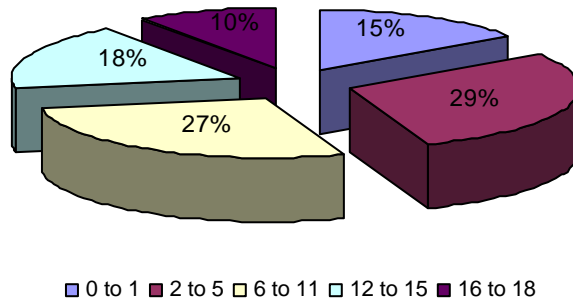
White children represented the highest percentage of children in relative care for the fourth quarter at 56 percent, similar to the previous quarter.

**Chart 28a: Ethnicity of Children in Relative Care**



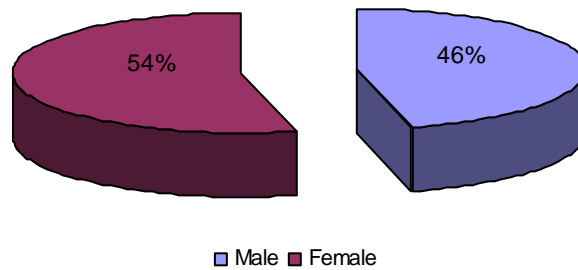
Children between the ages of 2 and 5 (29%) represented the largest age group of children in relative care, followed by children between the ages of 6 and 11 (27%).

**Chart 28b: Ages of Children in Relative Care**



Of the 430 children in relative care during the quarter, 54 percent were female and 46 percent were male, which were similar to the previous quarter.

**Chart 28c: Gender of Children in Relative Care**



**Part III: Description of Population and Services**  
**Section III: Adoption**

***Characteristics of Children with a Permanency Goal of Adoption During the Quarter***

There were 962 children with a permanency goal of adoption during the quarter. This was an increase from the previous quarter (933). The table below outlines those children’s characteristics.

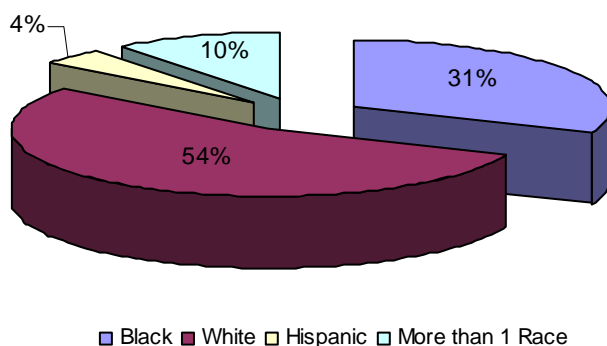
**Table 19: Characteristics of Children with a Permanency Goal of Adoption During the Quarter  
 4th Quarter SFY 2008**

Age	Gender	White	Black	Asian	AIAN	NAPI	Hispanic	More Than 1 Race	Total
0 to 1	Female	26	9	0	0	0	0	4	39
	Male	15	18	0	0	0	0	5	38
2 to 5	Female	78	49	0	0	0	5	15	147
	Male	72	45	0	1	0	5	18	141
6 to 11	Female	86	47	0	0	0	10	7	150
	Male	110	43	0	0	0	11	22	186
12 to 15	Female	48	34	0	0	0	5	11	98
	Male	57	34	1	0	0	3	14	109
16 to 18	Female	17	6	0	0	0	1	3	27
	Male	11	10	0	0	0	0	1	22
Over 18	Female	0	1	0	0	0	0	0	1
	Male	0	1	0	0	0	0	0	1
<b>Total</b>		<b>520</b>	<b>297</b>	<b>1</b>	<b>1</b>	<b>0</b>	<b>40</b>	<b>100</b>	<b>959</b>

\*Demographic data had not been entered into CHRIS for three children.

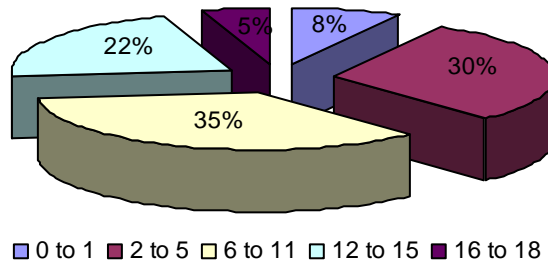
Of the 962 children with a permanency goal of adoption during the quarter, 54 percent were white, 31 percent were black and 4 percent were Hispanic. These numbers were similar to the previous quarter.

**Chart 29a: Ethnicity of Children with a Permanency Goal of Adoption During the Quarter**



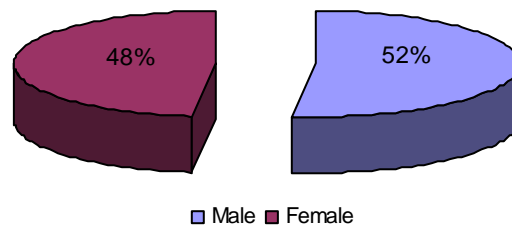
Children between the ages of 6 and 11 (35%) represented the largest group of children with a permanency goal of adoption. The age composition was similar to the previous quarter.

**Chart 29b: Ages of Children with a Permanency Goal of Adoption During the Quarter**



Of the 962 children with a permanency goal of adoption, 52 percent were male and 48 percent were female. These percentages were similar to the previous quarter.

**Chart 29c: Gender of Children with a Permanency Goal of Adoption During the Quarter**



***Characteristics of Children with a Permanency Goal of Adoption at the End of the Quarter***

There were 884 children with a permanency goal of adoption at the end of the quarter. The table below outlines those children’s characteristics.

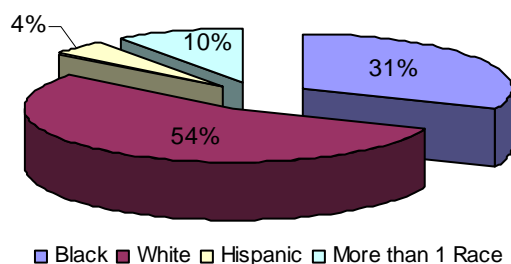
**Table 20: Characteristics of Children with a Permanency Goal of Adoption at the End of the Quarter  
4th Quarter SFY 2008**

Age	Gender	White	Black	Asian	AIAN	NAPI	Hispanic	More Than 1 Race	Total
0 to 1	Female	23	7	0	0	0	0	4	34
	Male	14	18	0	0	0	0	5	37
2 to 5	Female	68	44	0	0	0	4	12	128
	Male	65	43	0	1	0	5	15	129
6 to 11	Female	81	41	0	0	0	10	7	139
	Male	104	39	0	0	0	11	18	172
12 to 15	Female	43	33	0	0	0	4	10	90
	Male	55	32	1	0	0	3	14	105
16 to 18	Female	15	6	0	0	0	1	2	24
	Male	11	10	0	0	0	0	1	22
Over 18	Female	0	1	0	0	0	0	0	1
	Male	0	1	0	0	0	0	0	1
<b>Total</b>		<b>479</b>	<b>275</b>	<b>1</b>	<b>1</b>	<b>0</b>	<b>38</b>	<b>88</b>	<b>882</b>

\*Demographic data had not been entered into CHRIS for two children.

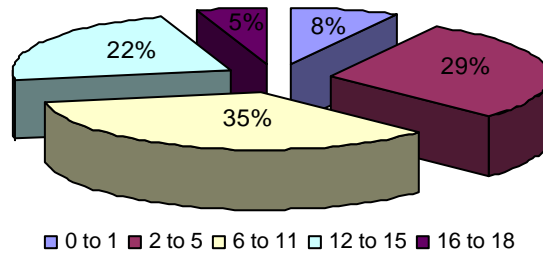
Of the 884 children with a permanency goal of adoption at the end of the quarter, 54 percent were white, 31 percent were black and 10 percent were of more than one race. These percentages were similar to the previous quarter.

**Chart 30a: Ethnicity of Children with a Permanency Goal of Adoption at the End of the Quarter**



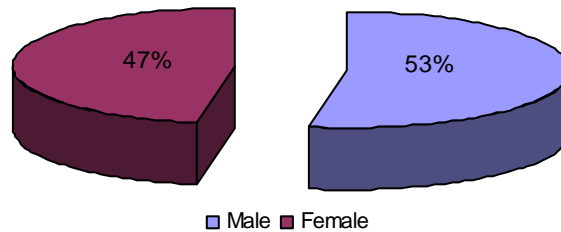
At the end of the quarter, children between the ages of 6 and 11 (35%) continued to represent the largest age group with a permanency goal of adoption, and children between the ages of 2 and 5 (29%) represented the second largest group.

**Chart 30b: Ages of Children with a Permanency Goal of Adoption at the End of the Quarter**



More male children (53%) than female children (47%) set a permanency goal of adoption at the end of the fourth quarter, similar to the previous quarter.

**Chart 30c: Gender of Children with a Permanency Goal of Adoption at the End of the Quarter**



**Characteristics of Children whose Parents have had Parental Rights Terminated During the Quarter**

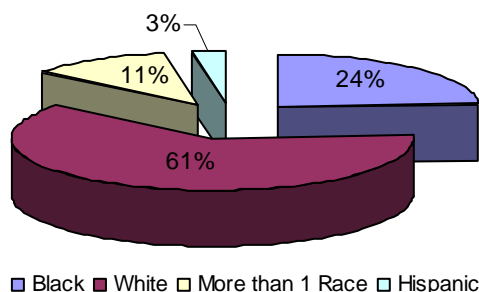
There were 70 children whose parents had their parental rights terminated during the fourth quarter. This was a decrease from the third quarter (72). The table below outlines the characteristics of those children.

**Table 21: Characteristics of Children whose Parents have had Parental Rights Terminated During the Quarter  
4th Quarter SFY 2008**

Age	Gender	White	Black	Asian	AIAN	NAPI	Hispanic	More Than 1 Race	Total
0 to 1	Female	6	4	0	0	0	1	0	11
	Male	6	2	0	0	0	0	1	9
2 to 5	Female	5	5	0	0	0	0	1	11
	Male	9	3	0	0	0	1	0	13
6 to 11	Female	6	1	0	0	0	0	0	7
	Male	7	2	0	0	0	0	4	13
12 to 15	Female	3	0	0	0	0	0	0	3
	Male	1	0	0	0	0	0	1	2
16 to 18	Female	0	0	0	0	0	0	1	1
	Male	0	0	0	0	0	0	0	0
<b>Total</b>		<b>43</b>	<b>17</b>	<b>0</b>	<b>0</b>	<b>0</b>	<b>2</b>	<b>8</b>	<b>70</b>

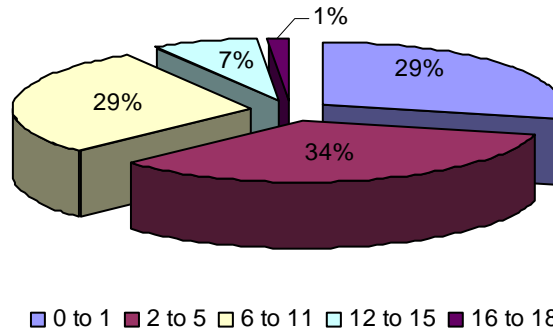
During the quarter, 61 percent of the children whose parents had their parental rights terminated during the quarter were white, 24 percent were black, 3 percent were Hispanic and 11 percent were of more than one race.

**Chart 31a: Ethnicity of Children whose Parents have had Parental Rights Terminated**



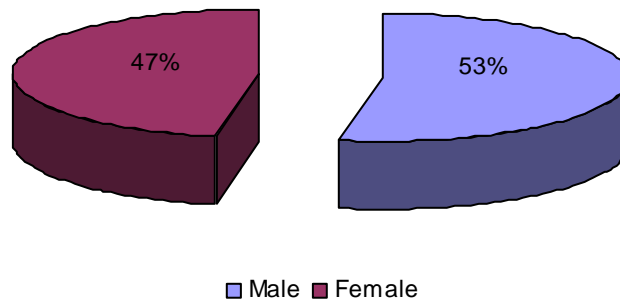
Children between the ages of 2 and 5 (34%) represented the largest group of children whose parents' parental rights were terminated during the quarter.

**Chart 31b: Ages of Children whose Parents have had Parental Rights Terminated**



There were more male children (53%) than female children (47%) that had parents whose parental rights were terminated during the quarter.

**Chart 31c: Gender of Children whose Parents have had Parental Rights Terminated**



**Characteristics of Children Available for Adoption at the End of the Quarter**

At the end of the fourth quarter, 526 children were available for adoption, an increase from the previous quarter (481). Demographic information for children available for adoption, shown in the table below, was very similar to previous quarters.

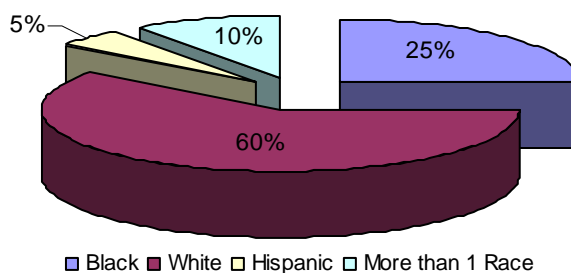
**Table 22: Characteristics of Children Available for Adoption at the End of the Quarter  
4th Quarter SFY 2008**

Age	Gender	White	Black	Asian	AIAN	NAPI	Hispanic	More Than 1 Race	Total
0 to 1	Female	13	5	0	0	0	0	3	21
	Male	9	8	0	0	0	0	3	20
2 to 5	Female	42	21	0	0	0	3	6	72
	Male	34	19	0	1	0	4	5	63
6 to 11	Female	57	17	0	0	0	7	3	84
	Male	71	19	0	0	0	6	14	110
12 to 15	Female	26	16	0	0	0	4	7	53
	Male	43	18	0	0	0	1	8	70
16 to 18	Female	12	2	0	0	0	0	2	16
	Male	9	6	0	0	0	0	1	16
<b>Total</b>		<b>316</b>	<b>131</b>	<b>0</b>	<b>1</b>	<b>0</b>	<b>25</b>	<b>52</b>	<b>525</b>

\*Demographic data had not been entered into CHRIS for one child.

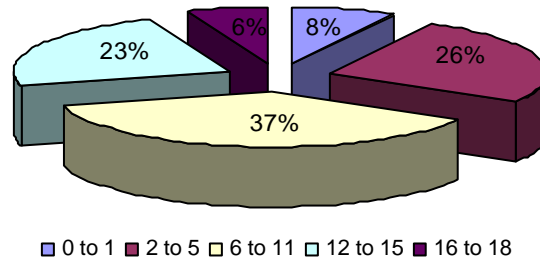
Of the children available for adoption, 60 percent were white and 25 percent were black. These percentages were similar to the previous quarter.

**Chart 32a: Ethnicity of Children Available for Adoption at the End of the Quarter**



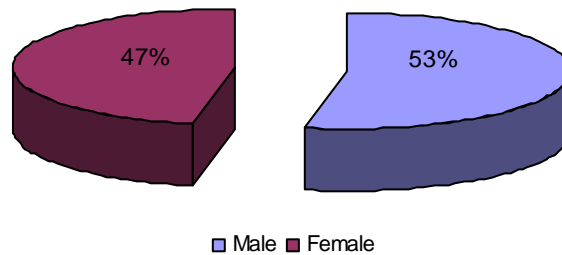
At the end of the quarter, more children between the ages of 6 and 11 (37%) were available for adoption than any other age group.

**Chart 32b: Ages of Children Available for Adoption at the End of the Quarter**



At the end of the quarter, more male children (53%) than female children (47%) were available for adoption. These percentages were similar to the second quarter.

**Chart 32c: Gender of Children Available for Adoption at the End of the Quarter**



***Current Placements of Children Available for Adoption***

At the end of the fourth quarter, more children who were available for adoption were placed in DCFS foster homes (43%) than in any other type of placement, followed by pre-adoptive homes (19%). These results were similar to the previous quarter.

**Table 23: Current Placements of Children Available for Adoption  
4th Quarter SFY 2008**

<b>Placement</b>	<b>Number of Children</b>	<b>Percentage</b>
<b>DCFS Foster Home</b>	227	43%
<b>Pre-Adoptive Home</b>	98	19%
<b>Therapeutic Foster Home</b>	93	18%
<b>Acute CRT</b>	5	1%
<b>Residential Facility</b>	61	12%
<b>Hospital/Medical</b>	4	1%
<b>Emergency Shelter</b>	7	1.3%
<b>Independent Living</b>	1	.2%
<b>Temporary Placement</b>	3	.6%
<b>Sub-Acute CRT</b>	20	4%
<b>ASAP CRT</b>	3	.6%
<b>Kinship Care</b>	3	.6%
<b>ASAP Residential Treatment</b>	1	.2%
<b>Total*</b>	<b>526</b>	<b>100%</b>

\*The sum of individual percentages may not equal 100% due to rounding.

**Characteristics of Children in Pre-adoptive Placements**

During the fourth quarter, 140 children were in pre-adoptive homes. This number includes children who could have entered pre-adoptive homes during previous quarters as well as children who were placed in pre-adoptive homes during the current quarter.

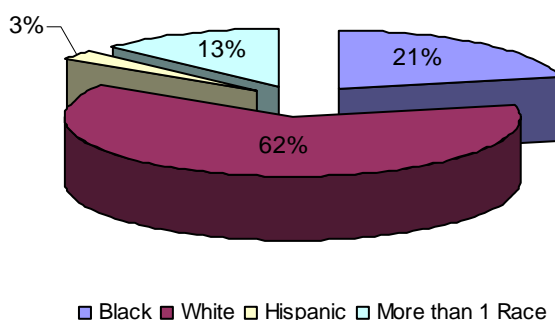
**Table 24: Characteristics of Children in Pre-adoptive Placements  
4th Quarter SFY 2008**

Age	Gender	White	Black	Asian	AIAN	NAPI	Hispanic	More Than 1 Race	Total
0 to 1	Female	7	2	0	0	0	0	1	10
	Male	2	1	0	0	0	0	0	3
2 to 5	Female	22	6	0	0	0	0	3	31
	Male	16	6	0	0	0	1	5	28
6 to 11	Female	17	4	0	0	0	2	1	24
	Male	14	9	0	0	0	1	3	27
12 to 15	Female	4	0	0	0	0	0	1	5
	Male	5	2	0	0	0	0	2	9
16 to 18	Female	0	0	0	0	0	0	2	2
	Male	0	0	0	0	0	0	0	0
<b>Total</b>		<b>87</b>	<b>30</b>	<b>0</b>	<b>0</b>	<b>0</b>	<b>4</b>	<b>18</b>	<b>139</b>

\*Demographic data had not been entered into CHRIS for one child.

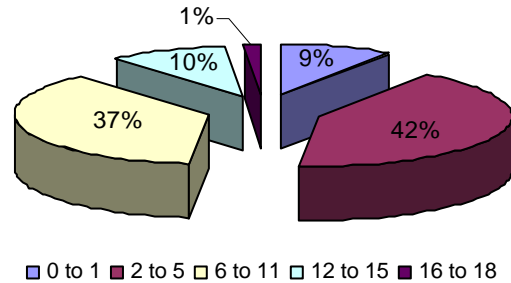
Of the 140 children in pre-adoptive homes during the quarter, 62 percent were white and 21 percent were black. These percentages were similar to the previous quarter.

**Chart 33a: Ethnicity of Children Placed in Pre-adoptive Homes During the Quarter**



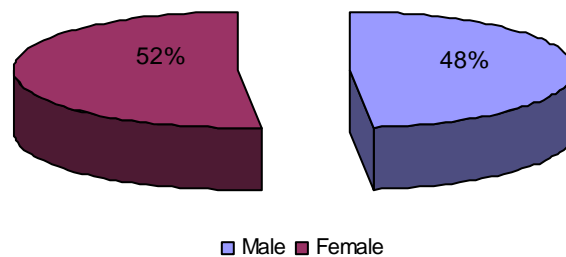
Children between the ages of 2 and 5 (42%) represented the largest group of children placed in pre-adoptive homes.

**33b: Ages of Children Placed in Pre-adoptive Homes During the Quarter**



Of the 140 children placed in pre-adoptive homes during the quarter, 48 percent were male and 52 percent were female. During the previous quarter, 45 percent were male and 55 percent were female.

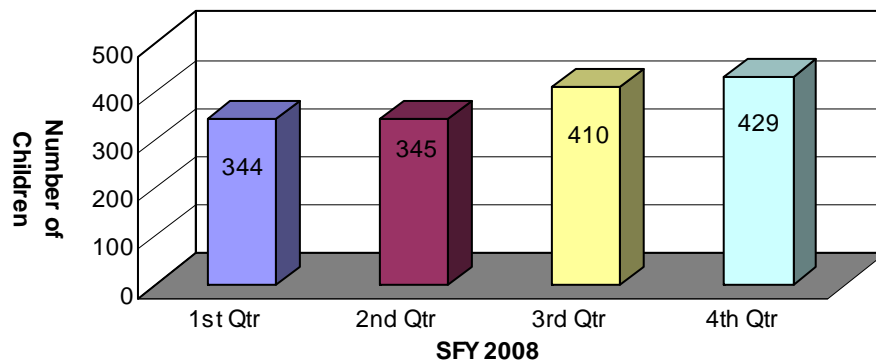
**33c: Gender of Children Placed in Pre-adoptive Homes During the Quarter**



***Children not Placed in Adoptive Homes whose Parents have had their Parental Rights Terminated***

During the fourth quarter, there were 429 children whose parents had their parental rights terminated but were not placed in adoptive homes, an increase from the previous quarter (410). This statistic was derived by subtracting the number of children placed in adoptive homes at the end of the quarter (97) from the number of children available for adoption at the end of the quarter (526).

**Chart 34: Children not Placed in Adoptive Homes whose Parents have had their Parental Rights Terminated**



***Children with Special Needs***

During the fourth quarter, 66 children with special needs were in pre-adoptive placements<sup>14</sup>. Children with special needs are defined as children who have severe medical or psychological needs that require ongoing treatment. Children at high risk for the development of serious physical, mental or emotional conditions may be considered special needs if documentation is provided by a medical professional specializing in the area of the condition for which the child is considered at risk. Other children may be considered special needs if they are Caucasian children over the age of nine, African American children at age two years or older; or children who are members of a sibling group of three or more who are to be placed together.

**Table 25: Children with Special Needs who were Placed in Adoptive Homes  
4th Quarter SFY 2008**

Special Needs Condition	Number of Children
Race	66
Age	60
Member of sibling group	18

***Characteristics of Children with Finalized Adoptions***

During the quarter, 122 children had their adoptions finalized, an increase from the previous quarter (84). The following table outlines the characteristics of the children with finalized adoptions.

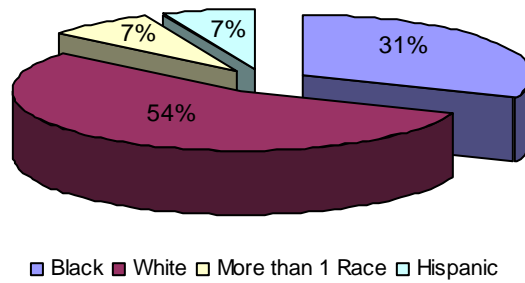
**Table 26: Characteristics of Children with Finalized Adoptions  
4th Quarter SFY 2008**

Age	Gender	White	Black	Asian	AIAN	NAPI	His-panic	More Than 1 Race	Total
0 to 1	Female	5	1	0	0	0	0	0	6
	Male	4	0	0	0	0	0	0	4
2 to 5	Female	17	6	0	0	0	3	4	30
	Male	16	9	1	0	0	1	2	29
6 to 11	Female	9	10	0	0	0	1	0	20
	Male	6	7	0	0	0	2	2	17
12 to 15	Female	5	1	0	0	0	1	0	7
	Male	2	4	0	0	0	0	0	6
16 to 18	Female	1	0	0	0	0	0	1	2
	Male	1	0	0	0	0	0	0	1
<b>Total</b>		<b>66</b>	<b>38</b>	<b>1</b>	<b>0</b>	<b>0</b>	<b>8</b>	<b>9</b>	<b>122</b>

<sup>14</sup> This number does not take into account children with severe medical and psychological needs because this data is not available in CHRIS (AR Children's Reporting and Information System). As enhancements are made to the data system to capture this information, it will be provided in future reports.

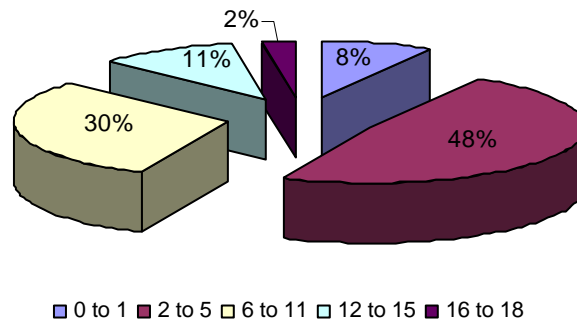
Of the 122 finalized adoptions during the fourth quarter, 54 percent of the adopted children were white and 31 percent were black.

**Chart 35a: Ethnicity of Children with Finalized Adoptions**



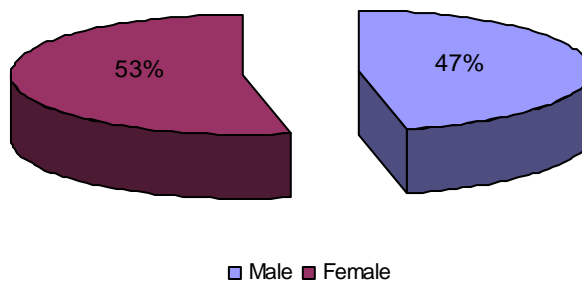
Children between the ages of 2 and 5 (48%) represented the largest group of children whose adoptions were finalized during the quarter.

**Chart 35b: Ages of Children with Finalized Adoptions**



During the quarter, 53 percent of the children whose adoptions were finalized were female and 47 percent were male.

**Chart 35c: Gender of Children with Finalized Adoptions**



**Subsidized Adoptions**

During the fourth quarter, 103 children began receiving adoption subsidies. Of those, 85 children received federally-funded subsidies and 18 received state-funded subsidies.

**Characteristics of Children who Received Adoption Subsidies**

During the fourth quarter, 3,179 children received adoption subsidies. The following table outlines the demographics of those children.

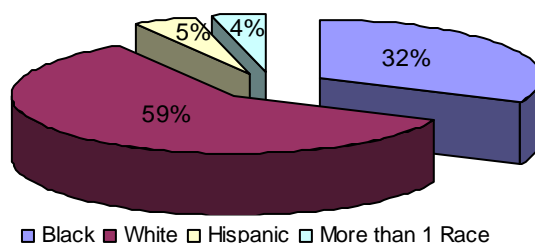
**Table 27: Characteristics of Children Receiving Adoption Subsidies  
4th Quarter SFY 2008**

Age	Gender	White	Black	Asian	AIAN	NAPI	Hispanic	More Than 1 Race	Total
0 to 1	Female	14	7	0	0	0	0	1	22
	Male	10	4	0	0	0	0	0	14
2 to 5	Female	139	56	2	0	0	18	16	231
	Male	150	79	2	0	0	20	13	264
6 to 11	Female	378	215	1	2	0	35	43	674
	Male	375	188	1	0	0	40	29	633
12 to 15	Female	244	149	1	1	0	17	7	419
	Male	275	144	0	1	0	4	10	434
16 to 18	Female	123	73	1	0	0	8	2	207
	Male	127	80	0	0	0	3	1	211
18+	Female	18	6	0	0	0	0	0	24
	Male	13	14	0	0	0	1	0	28
<b>Total*</b>		<b>1,866</b>	<b>1,015</b>	<b>8</b>	<b>4</b>	<b>0</b>	<b>146</b>	<b>122</b>	<b>3,161</b>

\*Demographic data had not been entered into CHRIS for 18 children.

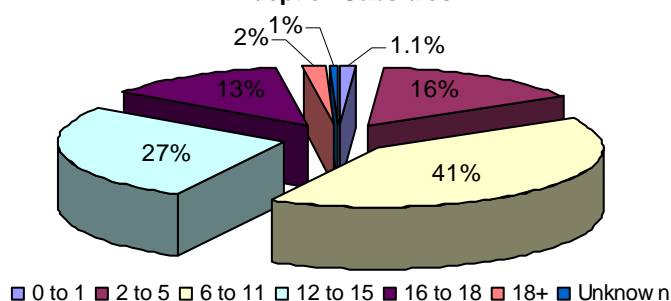
Fifty-nine percent of the children who received adoption subsidies were white and 32 percent were black, similar to the previous quarter.

**Chart 36a: Ethnicity of Children Receiving Adoption Subsidies**



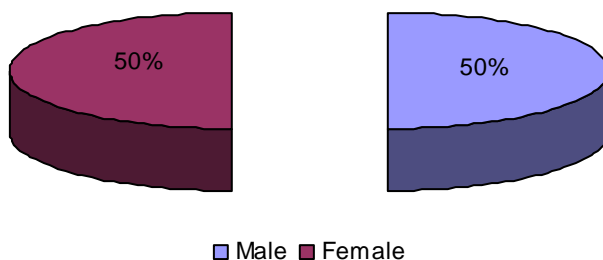
The majority of the children receiving adoption subsidies during the quarter were between the ages of 6 and 11 (42%).

**Chart 36b: Ages of Children Receiving Adoption Subsidies**



Of the children receiving adoption subsidies, 50 percent were male and 50 percent were female.

**Chart 36c: Gender of Children Receiving Adoption Subsidies**



### ***Adoptive Homes***

At the beginning of the fourth quarter, 613 adoptive homes were available; at the end of the fourth quarter, 556 adoptive homes were available.

**Table 28: Adoptive Homes  
4th Quarter SFY 2008**

	<b>Total Adoptive Homes</b>	<b>Non-Foster Adoptive Homes</b>	<b>Foster Adoptive Homes</b>
Homes available for children at beginning of quarter	613	262	351
Newly available homes	63	31	32
Homes that had children placed during the quarter	89	51	38
Home that experienced a disruption	3	3	0
Homes that closed without a placement	34	12	22
Homes available at the end of the quarter	556	233	323