

Quarterly Performance Report

***4th Quarter
SFY 2007***

(April 2007 – June 2007)

**Arkansas Department of Human Services
Division of Children and Family Services
Quality Assurance Unit**

Hornby Zeller Associates, Inc.

September 2007

A large, bold, white letter 'Q' is centered vertically within the top portion of a red vertical bar on the right side of the page.A large, bold, white letter 'P' is centered vertically within the middle portion of a red vertical bar on the right side of the page.A large, bold, white letter 'R' is centered vertically within the bottom portion of a red vertical bar on the right side of the page.

Table of Contents

| | |
|--|-----------|
| Executive Summary | i |
| Part I: Performance Indicators | 1 |
| Percentage of Families with True Allegations of Child Maltreatment Three Months, Six Months and One Year after a Previous True Report | 2 |
| Percentage of Foster Families with True Reports of Maltreatment..... | 2 |
| Percentage of Children Receiving Supportive Services, Protective Services or Intensive Family Services (IFS) who were Abused or Neglected within One Year of the Initiation of Services..... | 3 |
| Percentage of Children Receiving Supportive Services, Protective Services or Intensive Family Services (IFS) who Entered Foster Care Within One Year of the Initiation of Services | 4 |
| Percentage of Children in Foster Care who Returned Home within Eighteen Months | 4 |
| Percentage of Children in Foster Care who have Experienced Three or more Placements within the Past Eighteen Months..... | 5 |
| Percentage of Siblings in Placement who are Placed Together | 6 |
| Percentage of Children Living with Adoptive Families within Twelve Months of the Termination of Parental Rights | 7 |
| Number of Children Placed in Pre-adoptive Homes whose Adoptions were Finalized within Twelve Months of Entering Pre-adoptive Placements | 7 |
| Part II: Compliance Index | 8 |
| Timely Initiation of Child Maltreatment Assessments | 9 |
| Timely Completion of Child Maltreatment Assessments..... | 10 |
| 24- and 72-Hour Initial Health Screenings for Children Entering Foster Care | 11 |
| Comprehensive Health Assessments..... | 12 |
| Foster Home Recruitment | 13 |
| Foster Home Re-evaluations | 13 |
| Required Visits Made by Worker | 14 |
| Part III: Description of Population and Services | 15 |
| Section I: True Child Maltreatment Reports | 16 |
| Child Maltreatment Assessments..... | 16 |
| Characteristics of Children in True Maltreatment Reports..... | 18 |
| Children Involved in Allegations of True Maltreatment Reports..... | 20 |
| Section II: Foster Care | 21 |
| Characteristics of Children in Foster Care..... | 21 |
| Entries into Foster Care | 25 |
| Exits from Foster Care | 29 |
| Permanency Goals of Children in Foster Care..... | 32 |
| Length of Stay of Children in Foster Care | 33 |
| Number of Placements of Children in Foster Care..... | 34 |

Quarterly Performance Report – Table of Contents

| | |
|---|-----------|
| Characteristics of Children who Experienced Two or More Placements .. | 35 |
| Current Placement of Children in Foster Care | 37 |
| Characteristics of Children on Runaway Status at the End of the Quarter..... | 38 |
| Characteristics of Children in Relative Care..... | 40 |
| Section III: Adoption..... | 42 |
| Characteristics of Children with a Permanency Goal of Adoption During the Quarter..... | 42 |
| Characteristics of Children with a Permanency Goal of Adoption at the End of the Quarter | 44 |
| Characteristics of Children whose Parents have had Parental Rights Terminated During the Quarter | 46 |
| Characteristics of Children Available for Adoption at the End of the Quarter..... | 48 |
| Current Placements of Children Available for Adoption | 50 |
| Characteristics of Children in Pre-adoptive Placements | 51 |
| Children not Placed in Adoptive Homes whose Parents have had their Parental Rights Terminated | 53 |
| Children with Special Needs | 54 |
| Characteristics of Children with Finalized Adoptions..... | 54 |
| Subsidized Adoptions..... | 56 |
| Characteristics of Children who Received Adoption Subsidies | 56 |
| Adoptive Homes | 57 |

EXECUTIVE SUMMARY

The Quarterly Performance Report (QPR) is distributed to Division of Children and Family Services' (DCFS) managers and legislative committees dealing with children and youth. The QPR for the fourth quarter of State Fiscal Year (SFY) 2007, specifically April through June 2007, consists of three parts:

1. **Performance Indicators**, which provide information on service outcomes, such as:
 - a. *Percentage of Families with True Allegations of Child Maltreatment Three Months, Six Months and One Year after a Previous True Report*
 - b. *Percentage of Siblings in Placement who are Placed Together*
 - c. *Percentage of Children Living with Adoptive Families within Twelve Months of the Termination of Parental Rights*

2. **Compliance Index**, which reports on the Division's compliance with requirements set by DCFS with guidance from the Arkansas legislative children and youth committees, such as:
 - a. *Timely Completion of Child Maltreatment Assessments*
 - b. *24- and 72-Hour Initial Health Screenings for Children Entering Foster Care*
 - c. *Foster Home Recruitment*

3. **Description of Population and Services**, which describes the children who were the subjects of maltreatment reports; were served in foster care; and were provided adoption services, such as:
 - a. *Permanency Goals of Children in Foster Care*
 - b. *Characteristics of Children in Pre-Adoptive Homes*

The QPR provides this information on a quarterly basis, showing trends over time. The report provides the agency with information on the populations it serves and on pertinent issues so the agency can improve performance and better target its efforts.

Part I: Performance Indicators

DCFS has established nine performance indicators to measure its progress with regard to its major goals of child safety, permanency and well-being. During the third quarter, DCFS continued its efforts toward meeting these goals. Overall, DCFS maintained a performance standard that mirrors past efforts and successes.

For the fourth quarter, there was one noteworthy area, as shown below:

- Percentage of Siblings in Placement Who Are Placed Together

The percentage of siblings placed together has steadily decreased over the past year. This decrease can be attributed primarily to the lack of foster homes. Even if siblings cannot be placed together initially, staff are expected to continually seek placement to re-unite siblings. See the corrective action below for Foster Home Recruitment for specifics on how the Division plans to address this issue.

Part II: Compliance Index

DCFS has set compliance measures with guidance from the House Committees on Aging, Children and Youth, Legislative and Military Affairs and the Senate Interim Committee on Children and Youth. An index is compiled by reporting the level of compliance with these measures.

For the fourth quarter, the QPR addresses six noteworthy areas, as shown below:

- Timely Initiation of Child Maltreatment Assessments

The percentage for timely initiations stood at **85 percent**, the same as the previous quarter and below the goal of 95 percent.

Five areas improved compliance for Priority One initiations and four areas improved compliance with Priority Two initiations. Although compliance fell below the goal of 95 percent, areas have established corrective actions to help remedy the barriers that exist.

Areas 3, 4, 6 and 7 experienced declining compliance concerning the number of assessments initiated in a timely manner. Areas 3 and 7 intend to make Supervisors more accountable for assessments not completed timely. A lack of trained assessors impacted compliance in Area 6. However, they have hired staff who are currently in training. Some Area 4 investigators were affected by a facility investigation which involved several time-consuming interviews. Since the investigation will be completed by the next quarter, compliance should increase.

- Timely Completion of Child Maltreatment Assessments

The percentage for timely completions stood at **58 percent**, the same as the previous quarter and below the goal of 90 percent.

Three areas increased compliance with Priority One investigations and five increased compliance with Priority Two investigation completions. Areas 4, 5 and 8 have made efforts to complete a backlog of overdue investigations. Areas 1 and 3 experienced staff shortages. Supervisors will improve compliance by reviewing reports weekly or adding staff. Areas 6, 7 and 10 will improve compliance by improving staff's time management, especially improving documentation of activities and adhering to stricter timeframes. Supervisors will be held accountable for monitoring investigations for both timely initiations and completions.

- 24-Hour and 72-Hour Initial Health Screenings (IHS) for Children Entering Foster Care

The percentage for 24-hour initial health screenings stood at **84 percent**, three percentage points higher than the previous quarter but still below the goal of 95 percent.

The percentage for 72-hour initial health screenings stood at **83 percent**, three percentage points higher than the previous quarter and but still below the goal of 95 percent.

For the 24-hour screenings, five areas exceeded the 95 percent goal with 100 percent compliance, and three additional areas had a compliance rate that met or exceeded 90 percent.

For the 72-hour screenings, two areas exceeded the 95 percent goal, and six additional areas had a compliance rate that met or exceeded 80 percent.

Barriers to health screenings for children entering care include staff shortages and a lack of providers, in particular providers accepting new Medicaid patients. In particular, Areas 1, 5 and 10 cite the lack of providers and appointment slots as a primary obstacle to improving the percentage of screenings completed timely.

The Division of Medical Services is working with DCFS to recruit providers to serve children in foster care. Areas intend to implement corrective actions that allow Area Managers to further review and monitor the work of field staff.

- Comprehensive Health Assessments

The percentage for comprehensive health assessments stood at **47 percent**, the same as the previous quarter and below the goal of 95 percent.

Five areas increased compliance with timely comprehensive assessments from the previous quarter. Barriers to comprehensive health assessments include scheduling or communication problems among staff as well as a lack of appointment slots available at UAMS clinics. Arguably the most significant barrier to improving compliance remains the sheer volume of children entering care. More children entered care during the quarter than staff and UAMS could accommodate.

As a corrective action, DCFS is working with UAMS to increase the availability of clinics. In July, one clinic added 50 slots per month to see more children. The low availability of clinics in certain areas lessens the margin of error, thereby forcing area staff to improve their communication. Several areas intend to improve communication between the Health Service Workers and Family Service Workers, County Supervisors or Area Manager, notifying and reminding others about scheduled and missed appointments.

- Foster Home Recruitment

During the fourth quarter, DCFS recruited **71** foster homes, compared to **40** during the previous quarter. This is below the goal of 80 new homes per quarter.

Though areas have struggled in the past with recruiting new foster homes due to high caseloads, the number of foster homes recruited during the quarter has increased significantly over the previous quarter. DCFS has resource workers that hold monthly or bi-weekly meetings for prospective foster parents to attend in order to receive information about foster parenting. DCFS has also implemented quarterly meetings of all resource staff to review recruitment plans and develop a uniform process for responding to inquiries. New plans have been developed using statistical information to enhance child-specific recruitment.

A major initiative, titled *Children of Arkansas Loved for a Lifetime (The C.A.L.L.)*, has begun in Area 6. *The C.A.L.L.* represents a promising collaboration between the Division and faith-based organizations to recruit and support foster and adoptive homes via these resources, as well as providing support for child welfare staff. DCFS intends to expand *The C.A.L.L.* to areas other than Area 6 in the near future.

- Required Visits Made by Worker

During the fourth quarter, the percentage of children who received a visit increased slightly from **56 percent** in April to **57 percent** in May, before decreasing to **49 percent** in June. This is a change from the previous quarter when the percentage of children who received visits for January through March was 56 percent, 54 percent and 49 percent, respectively.

Three areas experienced an increase in required worker visits over the entire quarter. DCFS continues to focus on filling vacant positions; 90 percent of positions were filled at the time of the last QPR. This has increased to 91 percent of the positions being filled in August 2007. Even though the percentage of available positions that are filled has increased, workers must still complete training before they can carry a caseload. Additionally, the demand on existing workers continues to increase due to an increasing volume of children and families to be served.

Supervisors will be held accountable for lack of monthly contact with children in care. Visits will be monitored on a monthly basis to determine the reason for lack of contact by DCFS staff.

Part III: Description of Population and Services

The Description of Population and Services section describes the children who were subjects of maltreatment reports; were served in foster care; and were provided with adoption services.

There were no noteworthy areas in this section during the fourth quarter.

PART I: PERFORMANCE INDICATORS

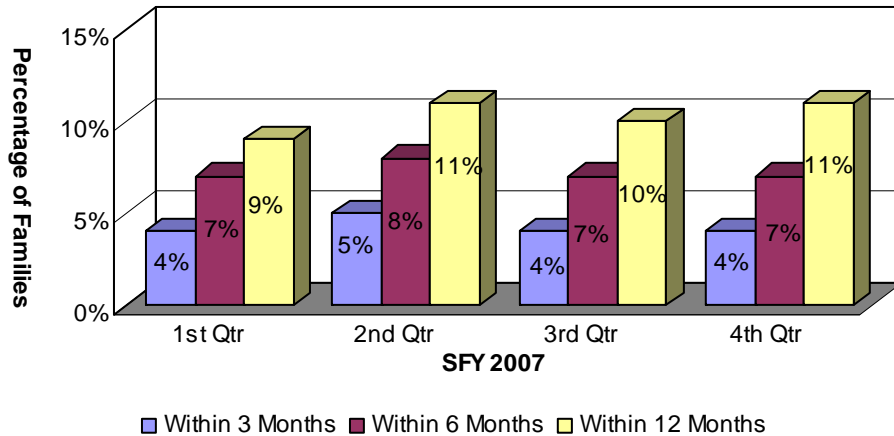
The Division has established nine performance measures to indicate achievement levels regarding its major goals in child safety, family preservation and permanency:

- Percentage of families with true allegations of child maltreatment three months, six months and one year after a previous true report;
- Percentage of foster families with true reports of maltreatment;
- Percentage of children receiving Supportive Services, Protective Services or Intensive Family Services (IFS) who were abused or neglected within one year of the initiation of services;
- Percentage of children receiving Supportive Services, Protective Services or Intensive Family Services (IFS) who entered foster care within one year of the initiation of services;
- Percentage of children in foster care who returned home within eighteen months;
- Percentage of children in foster care who have experienced three or more placements within the past eighteen months;
- Percentage of siblings in placement who are placed together;
- Percentage of children living with adoptive families within twelve months of the termination of parental rights; and
- Number of children placed in pre-adoptive homes whose adoptions were finalized within twelve months of entering pre-adoptive placements.

Percentage of Families with True Allegations of Child Maltreatment Three Months, Six Months and One Year after a Previous True Report

Of the 1,738 families involved in true reports of maltreatment during the fourth quarter one year ago, only 11 percent (196) had a subsequent true report within 12 months. Fifty-four percent of true reports involved both the same perpetrator and the same type of maltreatment as the initial report¹.

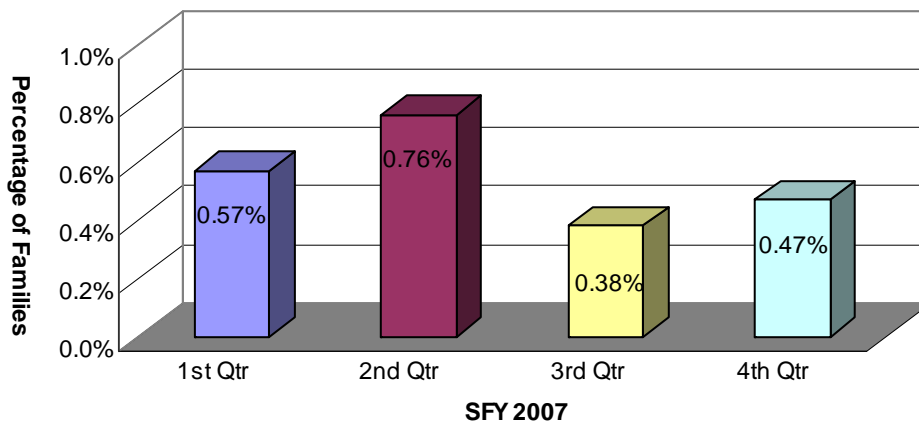
Chart 1: Recurrence of Maltreatment within 12 Months of Initial Report



Percentage of Foster Families with True Reports of Maltreatment

Of the 29 foster home maltreatment reports received during the fourth quarter, only six were found to be true. Based upon 1,264 active foster homes² during the quarter, the percentage of foster families with true reports of maltreatment was .47 percent.

Chart 2: Percentage of Foster Families with True Reports of Maltreatment



¹ The remaining 46 percent of the subsequent reports were distributed as follows: No repetition of perpetrator or type of abuse – 21.43 percent; Same perpetrator only – 3.06 percent; Same type of abuse only – 21.43 percent.

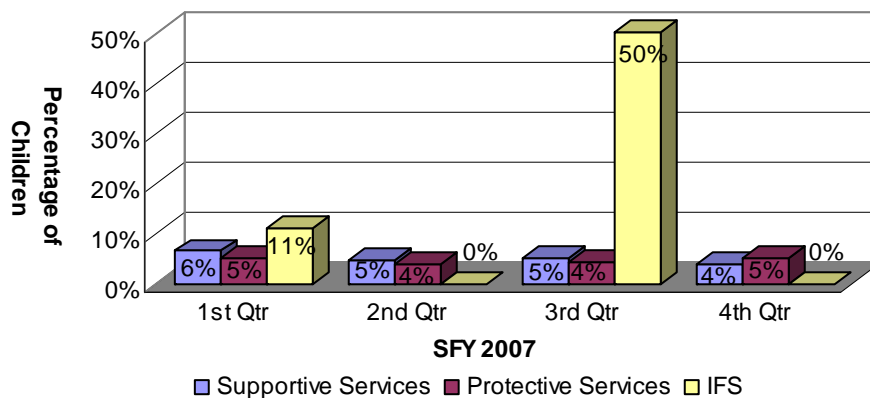
² This includes family and therapeutic foster homes.

Percentage of Children Receiving Supportive Services, Protective Services or Intensive Family Services (IFS) who were Abused or Neglected within One Year of the Initiation of Services

Generally, families receiving Supportive Services have less severe problems. However, families receiving Intensive Family Services (IFS) are, by definition, at imminent risk of having one or more children placed in foster care or already have children in foster care. Families receiving Protective Services generally fall between those two extremes.

Of the 327 children who began receiving Supportive Services between April and June 2006, 12 children (4%) experienced a true report of maltreatment within one year. Of the 3,092 children who began receiving Protective Services, 152 children (5%) were involved in a true report within one year. Of the three children who began receiving IFS services, none of the children (0%) were involved in a true report within one year.

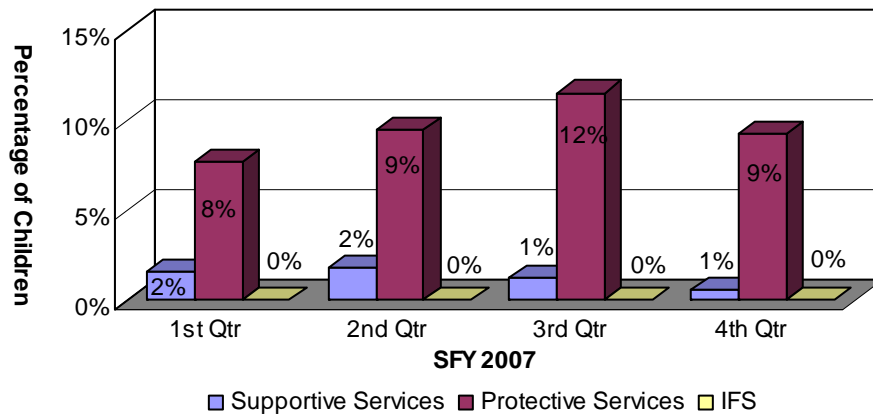
Chart 3: Children Receiving Supportive Services, Protective Services or IFS who were Abused or Neglected within One Year of the Initiation of Services



Percentage of Children Receiving Supportive Services, Protective Services or Intensive Family Services (IFS) who Entered Foster Care within One Year of the Initiation of Services

Two of the 327 children who began receiving Supportive Services; 288 of the 3,092 children who began receiving Protective Services; and none of the three children who began receiving IFS services between April and June 2006 entered foster care within one year of the initiation of these services.

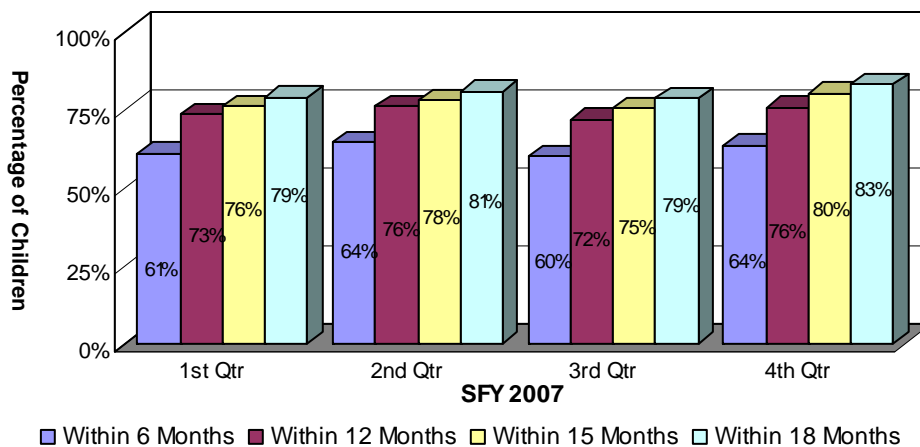
Chart 4: Children Receiving Supportive Services, Protective Services or Intensive Family Services who Entered Foster Care within One Year of the Initiation of Services



Percentage of Children in Foster Care who Returned Home within Eighteen Months

During the quarter 18 months prior to the current quarter, 894 children entered foster care. Of those, 743 children (83%) returned home within 18 months.

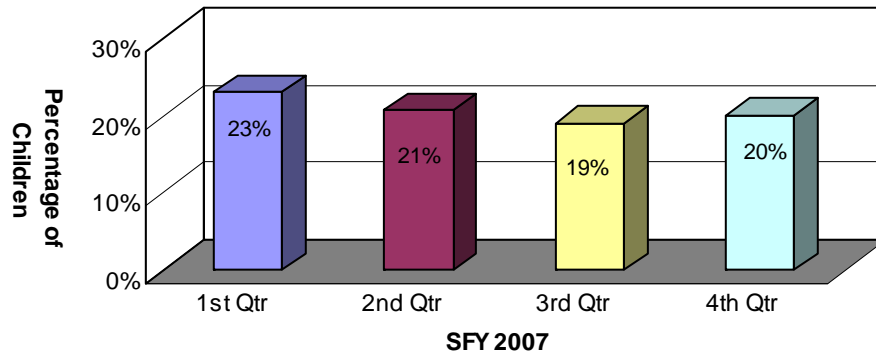
Chart 5: Children in Foster Care who Returned Home within Eighteen Months



Percentage of Children in Foster Care who have Experienced Three or more Placements within the Past Eighteen Months

Of the 978 children who entered foster care during the quarter 18 months prior to the current quarter, 198 children (20%) experienced three or more placements within 18 months. This represents a one percentage point increase from the previous quarter. Of those same 944 children, 150 (15%) experienced three or more placements within 15 months of entering foster care.

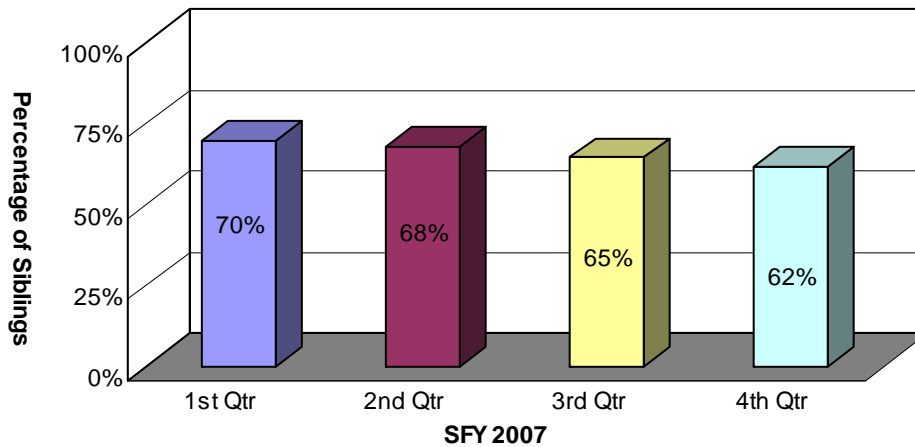
Chart 6: Children in Foster Care who have Experienced Three or More Placements within the Past Eighteen Months



Percentage of Siblings in Placement who are Placed Together

During the fourth quarter, there were 1,915 children with siblings in foster care. Sixty-two percent of those children (1,183 children) were placed with at least one of their siblings. This was three percentage points lower than the previous quarter (65%) and lower than the same quarter ending one year ago (70%). Of those same 1,915 children, 786 (41%) were placed with all of their siblings, which was higher than the previous quarter. These figures do not exclude children who were placed separately for valid reasons such as safety issues or court orders.

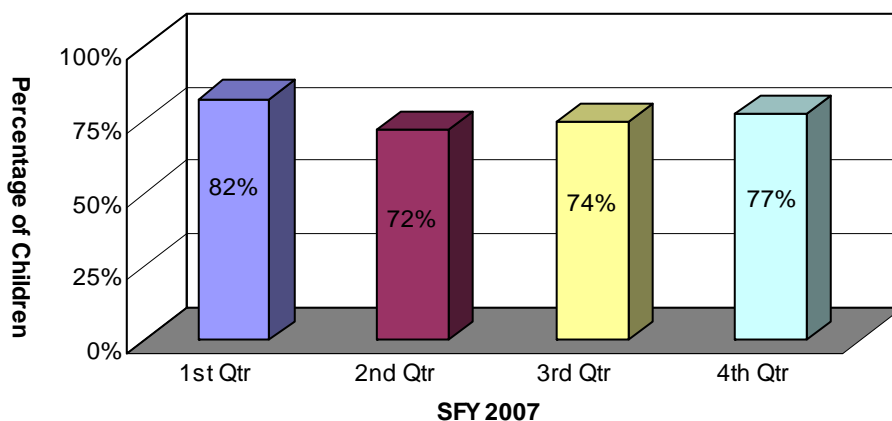
Chart 7: Siblings in Care who are Placed Together



Percentage of Children Living with Adoptive Families within Twelve Months of the Termination of Parental Rights

Of the 101 children whose parents had their parental rights terminated between April and June 2006, 78 children (77%) were placed in adoptive homes within 12 months of the termination of parental rights. This was three percentage points higher than the previous quarter.

Chart 8: Children Living with Adoptive Families within Twelve Months of the Termination of Parental Rights



Number of Children Placed in Pre-adoptive Homes whose Adoptions were Finalized within Twelve Months of Entering Pre-adoptive Placements

Sixty-two children were placed in pre-adoptive homes between April and June 2006. Of those, 46 children (74%) had their adoptions finalized within 12 months of being placed in pre-adoptive homes, higher than the previous quarter and higher than the same quarter one year ago. Six children (10%) experienced disruptions, which occur when a child has been placed in a pre-adoptive home and the family or the child decides not to proceed with the adoption and the child subsequently leaves the home. There were 12 children whose adoptions were still pending finalization 12 months after placement in adoptive homes.

**Table 1: Children Placed in Pre-adoptive Homes whose Adoptions were finalized within Twelve Months of Entering Pre-adoptive Placements
4th Quarter SFY 2007**

| Adoption Status | Number of Children |
|---|--------------------|
| Children Placed in Pre-adoptive Homes | 62 |
| Finalized Adoption | 46 |
| Disrupted Adoptive Placements | 6 |
| Children with a Disruption who were Re-placed in Pre-adoptive Homes | 2 |
| Still Pending after Twelve Months | 12 |

PART II: COMPLIANCE INDEX

The Division has set compliance measures with guidance from the Joint Interim Committee on Children and Youth. An index is compiled by reporting the level of compliance in relation to these measures.

Goal Compliance Measure

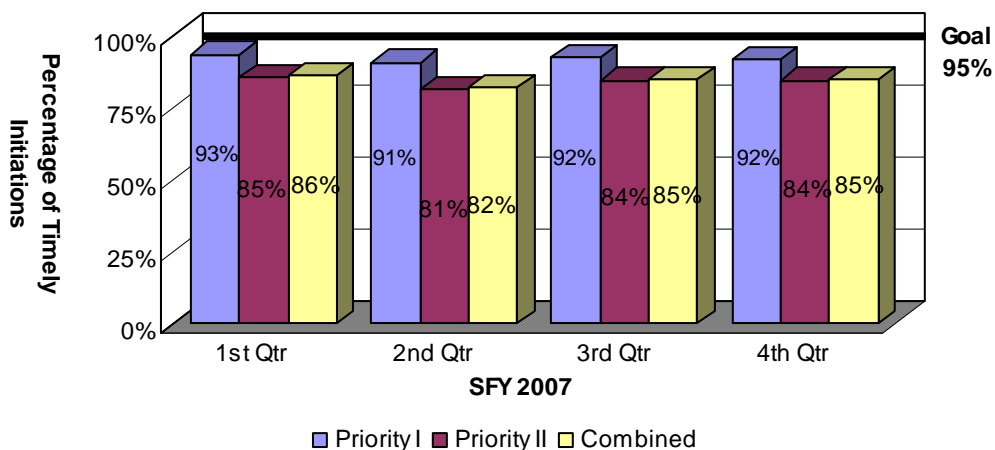
- 95%** ***Timely Initiation of Child Maltreatment Assessments.*** Timely initiation means the investigator interviews or observes the victim child outside the presence of the alleged offender within 24 hours of any report of alleged severe maltreatment or within 72 hours otherwise.
- 90%** ***Timely Completion of Child Maltreatment Assessments.*** Timely completion means a determination must be made regarding an allegation of child maltreatment within 30 days of receipt of the allegation.
- 95%** ***24-Hour Initial Health Screenings.*** This screening is conducted within 24 hours after removal from the home on children who enter foster care due to an allegation of severe maltreatment or if there is evidence of acute illness or injury.
- 95%** ***72-Hour Initial Health Screenings.*** This screening is conducted within 72 hours after removal from the home on all children who enter foster care who are not subject to the 24-hour screening.
- 95%** ***Comprehensive Health Assessments.*** The purpose of this assessment is to evaluate the physical and mental health status of all foster children and is to be completed within 60 days of a child entering foster care.
- 80** ***Foster Home Recruitment.*** DCFS must ensure that a sufficient number and homes variety of foster homes meeting minimal standards and matched to the needs and characteristics of foster children are available. The goal is 80 homes for the quarter or 320 homes for the year.
- 95%** ***Foster Home Re-evaluations.*** DCFS must re-evaluate at least annually each foster home's ability to care for children.
- 85%** ***Required Visits Made by Worker.*** DCFS must provide data on the percentage of monthly visits made by DCFS workers to children in foster care.

Timely Initiation of Child Maltreatment Assessments

Whenever there is an allegation of child maltreatment, the Family Service Worker, the Crimes Against Children Division (CACD) staff member or staff from another local law enforcement agency must interview or observe the victim child outside the presence of the alleged offender within 72 hours of the report (Priority II), unless there is an allegation of severe maltreatment, in which case the interview or observation must occur within 24 hours of the report (Priority I). There were 7,689 referrals for child maltreatment assessments during the quarter. Of that number, 511 Priority I referrals and 5,490 Priority II referrals were assigned to DCFS for investigation. Of the DCFS Priority I referrals, 469 assessments were initiated within the required 24-hour period. Of the DCFS Priority II referrals, 4,628 assessments were initiated within the required 72-hour period³. The compliance rate for DCFS Priority I initiations was 92 percent and 84 percent for Priority II initiations, which resulted in a combined compliance rate of 85 percent, this was the same as the previous quarter.

As noted previously, the Crimes Against Children Division (CACD) of the Arkansas State Police is also responsible for handling child abuse assessments. CACD was responsible for 1,688 of the 7,689 referrals that came in during the quarter, of which 1,636 were Priority I referrals and 52 were Priority II referrals. Of the Priority I referrals, 1,628 assessments (99.5%) were initiated in a timely manner. Of the Priority II referrals, 50 assessments (96%) were initiated in a timely manner.

Chart 9: Timely Initiation of Child Maltreatment Assessments

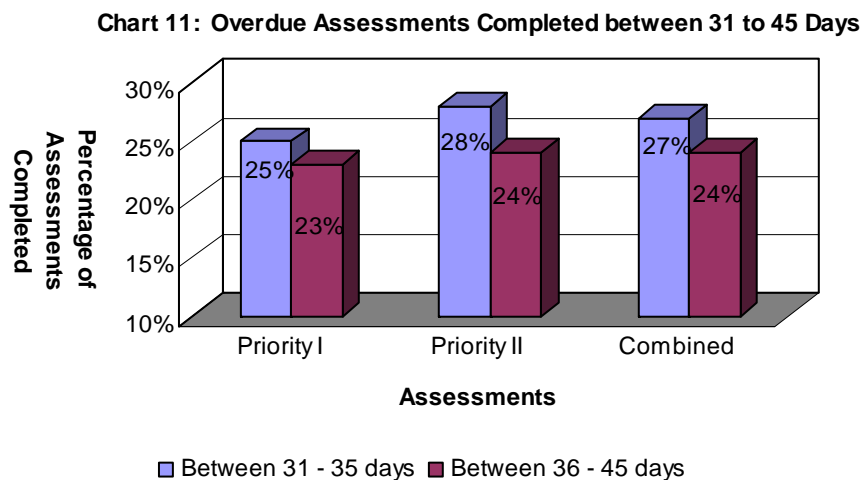
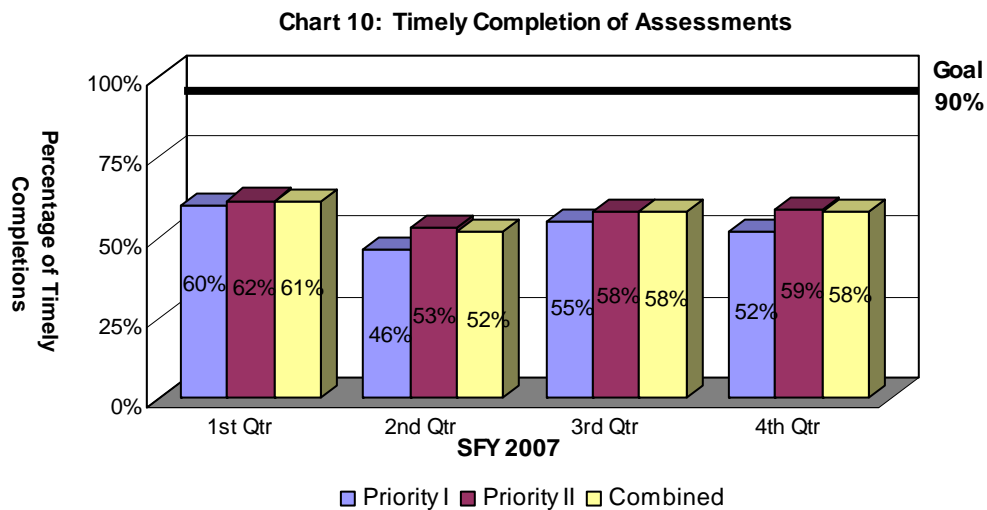


³ DCFS had 469 Priority I referrals and 4,628 Priority II referrals that were initiated in a timely manner. Of those, 75 Priority I (16%) and 1,242 Priority II referrals (27%) were considered compliant due to reasonable diligence. CACD had 1,628 Priority I referrals and 50 Priority II referrals that were initiated in a timely manner. Of those, 270 Priority I (17%) and 3 Priority II (6%) referrals were considered compliant due to reasonable diligence.

Timely Completion of Child Maltreatment Assessments

Of the 511 DCFS Priority I assessments initiated, 266 (52%) were completed within the required 30-day period. Of the 5,490 DCFS Priority II assessments initiated, 3,228 (59%) were completed within the required 30-day period. Of the total 6,001 assessments assigned to DCFS, there were 3,494 assessments completed in a timely fashion. These completions resulted in a compliance rate of 58 percent, which is the same percentage as the third quarter and still below the goal of 90 percent. (See plan of action in the Executive Summary.)

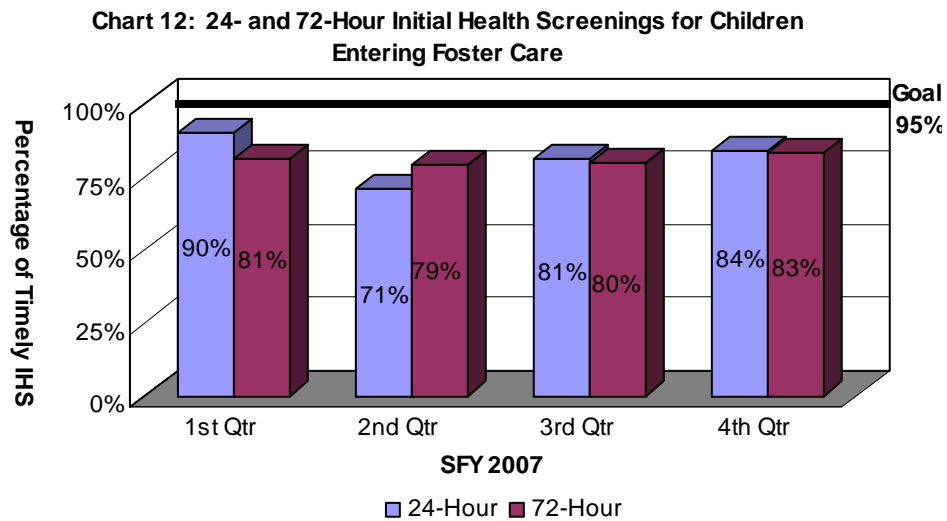
As referenced earlier, the Crimes Against Children Division (CACD) of the Arkansas State Police was responsible for 1,688 of the 7,689 incoming referrals during the quarter. Of that number, 1,636 were Priority I referrals and 52 were Priority II referrals. Of the Priority I assessments, 1,324 (81%) were completed in a timely fashion. Of the Priority II assessments, 44 (85%) were completed in a timely fashion.



24- and 72-Hour Initial Health Screenings for Children Entering Foster Care

When a child enters foster care due to an allegation of severe maltreatment or if there is evidence of acute illness or injury, DCFS must conduct an initial health screening within 24 hours of the child's removal from the home. Of the 114 children who required the 24-hour health screening during the fourth quarter, 96 children (84%) received the screening in a timely manner. The compliance rate was three percentage points higher than the previous quarter and did not meet the goal of 95 percent.

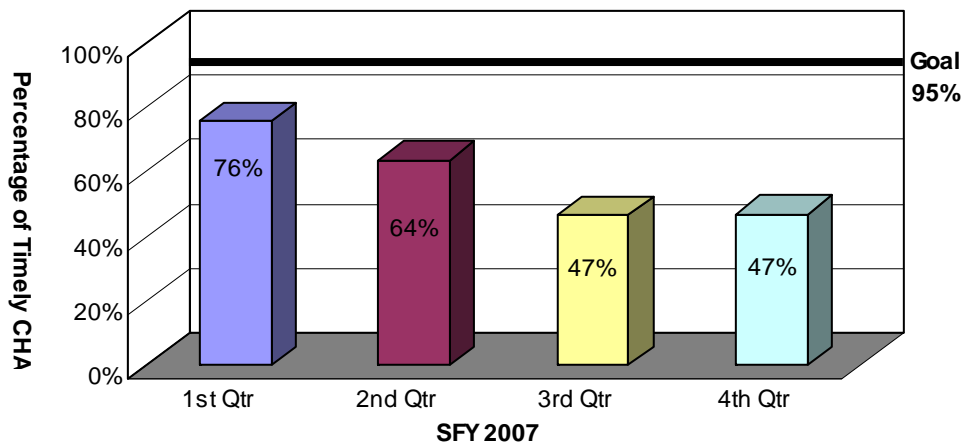
All children entering foster care who do not require the initial 24-hour health screening must still undergo an initial health screening within 72 hours of their removal. Of the 738 children, 614 (83%) received their screenings in a timely manner, which was three percentage points higher than the previous quarter and did not meet the goal of 95 percent. (See plan of action in the Executive Summary.)



Comprehensive Health Assessments

All children entering foster care must receive a comprehensive health assessment that evaluates their physical and mental health status within 60 days of entering foster care. Between January 31, 2007, and April 4, 2007, 378 children entered foster care and remained in care for at least 60 days. Of those children, 177 received their comprehensive health assessment within 60 days after entering care. The resulting compliance rate was 47 percent. This figure is the same as the previous quarter, and below the goal of 95 percent. (See plan of action in the Executive Summary.)

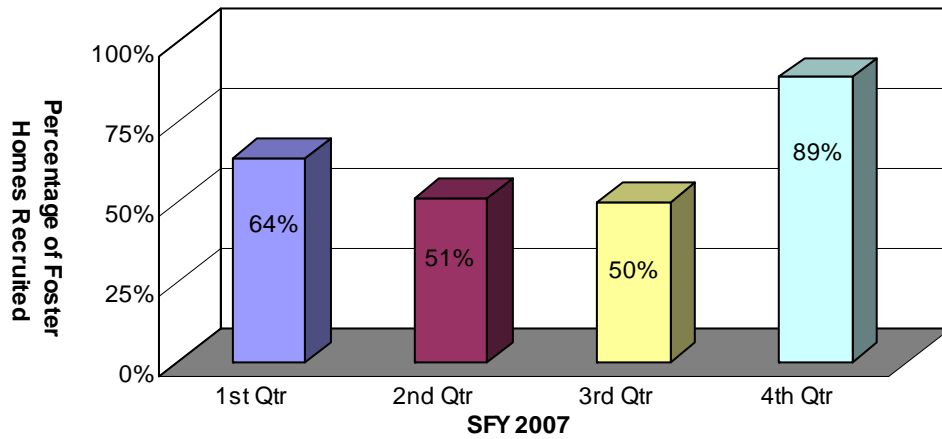
Chart 13: Comprehensive Health Assessments



Foster Home Recruitment

DCFS recruited 71 new foster homes during the fourth quarter, fewer than the goal of 80 new homes. The 89 percent compliance rate was 39 percentage points higher than the previous quarter (50%).

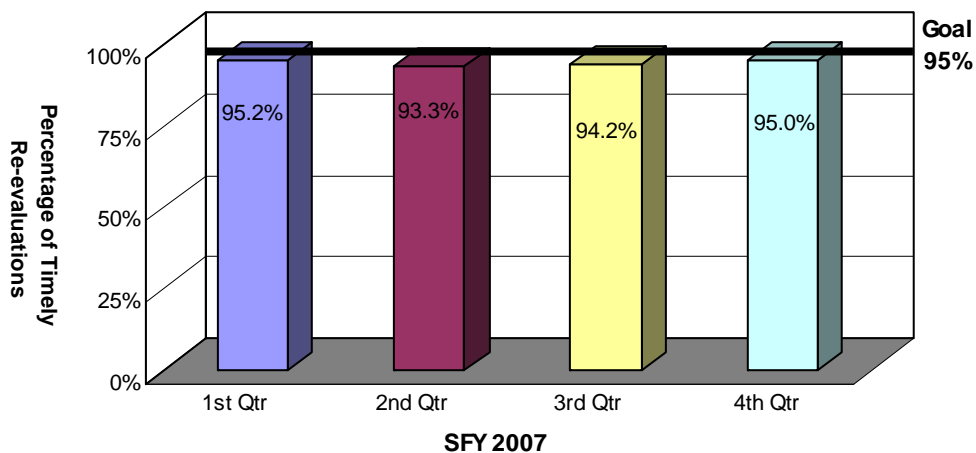
Chart 14: Foster Home Recruitment



Foster Home Re-evaluations

On an annual basis, at a minimum, DCFS conducts required re-evaluations of each foster home’s ability to care for children. Of the 968 active foster homes during the fourth quarter, staff completed current re-evaluations for 920 homes. The resulting 95 percent compliance rate was higher than the previous quarter and met the goal of 95 percent compliance.

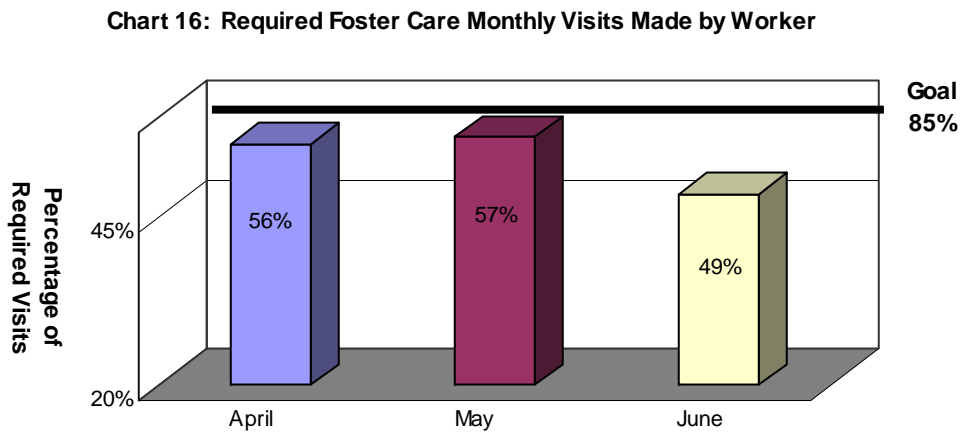
Chart 15: Foster Home Re-evaluations



Required Visits Made by Worker

DCFS acknowledges the importance of worker contact with children in foster care and believes that these visits should be in the home as often as possible. However, DCFS also recognizes that face-to-face visits in other locations can also meet good practice objectives. Consequently, the measurement of required monthly visits with children in care considers face-to-face visits in any setting as compliant.

During the fourth quarter, the percentage of children who received a visit during the quarter averaged 54 percent from April to June. (See plan of action in the Executive Summary.)



PART III: DESCRIPTION OF POPULATION AND SERVICES

This section describes the number and status of maltreatment assessments; children who were served in foster care; and children who were provided adoption services.

Section I outlines characteristics of children in true maltreatment reports such as age, gender and ethnicity, and specifically compares state ethnicity data to national data. Additionally, this section defines the types of allegations in maltreatment reports.

Section II describes the foster care population. Specifically, it describes the characteristics of children in foster care; entries and exits of children in foster care; reasons children come into care; lengths of stay for children in foster care as well as children in relative care; placements of children in foster care; and the number of placements children experience while in care.

Section III reports adoption data such as the characteristics of children available for adoption; current placement of those children; characteristics of children placed in adoptive homes; children whose parents have terminated their parental rights but have not been placed in adoptive homes; finalized adoptions; and adoption subsidies.

Part III: Description of Population and Services

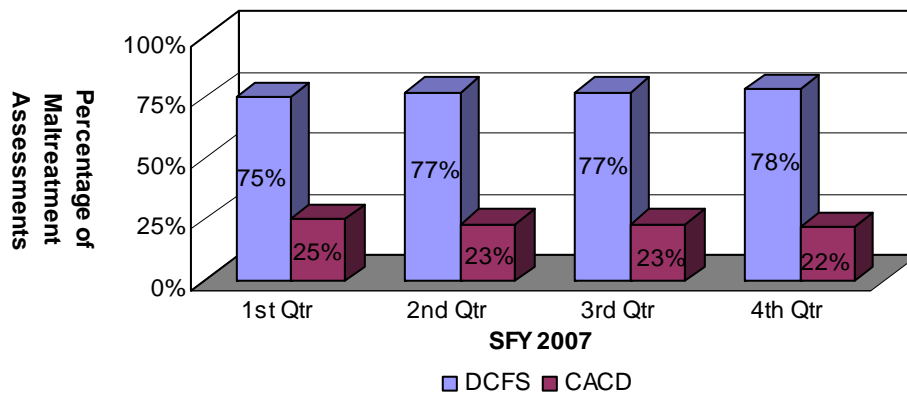
Section I: True Child Maltreatment Reports

Child Maltreatment Assessments

During the fourth quarter, 7,689 maltreatment assessments were assigned between DCFS and CACD. Of those, 6,001 assessments (78%) were assigned to DCFS. This figure represented an increase in the number of assessments assigned to DCFS from the previous quarter (4,896), and an increase in the number assigned from the same quarter ending one year ago (5,443).

Of those same 7,689 assessments, 1,688 (22%) were assigned to CACD. This figure represented an increase in the number of assessments assigned to CACD from the previous quarter (1,442), and an increase in the number assigned from the same quarter ending one year ago (1,681).

Chart 17a: Child Maltreatment Assessments



Of the 7,689 maltreatment assessments assigned during the fourth quarter of SFY 2007, 1,914 reports (25%) were found to be true, which was two percentage points higher than the same quarter one year ago (23%). The national percentage is 25 percent⁴. There were 2,842 victim children involved in the 1,914 true reports during the quarter, which represented an increase in the victim children during the same quarter one year ago (2,369).

Table 2: Child Maltreatment Assessments

| | Total Assessments | True Assessments | Percent True |
|-------------------------|--------------------------|-------------------------|---------------------|
| 1st Qtr SFY 2007 | 6,058 | 1,502 | 25% |
| 2nd Qtr SFY 2007 | 6,738 | 1,595 | 24% |
| 3rd Qtr SFY 2007 | 6,338 | 1,599 | 25% |
| 4th Qtr SFY 2007 | 7,689 | 1,914 | 25% |

⁴ Source: Child Maltreatment 2005, Reports from the States to the National Child Abuse and Neglect Data System, U.S. Department of Health and Human Services, Administration for Children and Families, Administration on Children, Youth and Families, Children's Bureau.

Characteristics of Children in True Maltreatment Reports

As referenced previously, 2,842 victim children were involved in true reports during the fourth quarter. The table below outlines the demographic information for the victim children during the quarter⁵.

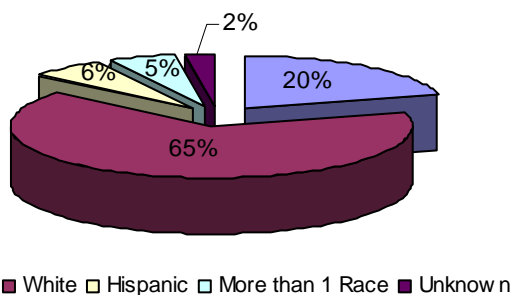
**Table 3: Characteristics of Children in True Maltreatment Reports
4th Quarter SFY 2007**

| Age | Gender | White | Black | Asian | AIAN | NAPI | Hispanic | More Than 1 Race | Total |
|---------------|--------|--------------|------------|----------|----------|----------|------------|------------------|--------------|
| 0 to 1 | Female | 115 | 40 | 1 | 1 | 0 | 9 | 8 | 174 |
| | Male | 121 | 48 | 0 | 0 | 0 | 8 | 22 | 199 |
| 2 to 5 | Female | 221 | 62 | 1 | 1 | 0 | 18 | 19 | 322 |
| | Male | 195 | 83 | 0 | 1 | 1 | 27 | 18 | 325 |
| 6 to 11 | Female | 317 | 115 | 2 | 1 | 1 | 37 | 19 | 492 |
| | Male | 290 | 74 | 0 | 1 | 0 | 23 | 28 | 416 |
| 12 to 15 | Female | 266 | 82 | 1 | 0 | 2 | 30 | 21 | 402 |
| | Male | 152 | 28 | 0 | 0 | 1 | 9 | 9 | 199 |
| 16 to 18 | Female | 133 | 35 | 0 | 0 | 0 | 8 | 3 | 179 |
| | Male | 44 | 14 | 0 | 0 | 0 | 2 | 5 | 65 |
| 18+ | Female | 0 | 0 | 0 | 0 | 0 | 0 | 0 | 0 |
| | Male | 1 | 0 | 0 | 0 | 0 | 0 | 0 | 1 |
| Total* | | 1,855 | 581 | 5 | 5 | 5 | 171 | 152 | 2,774 |

*Demographic data had not been entered into CHRIS for 68 children.

Of the children involved in true maltreatment reports, 65 percent were white and 20 percent were black.

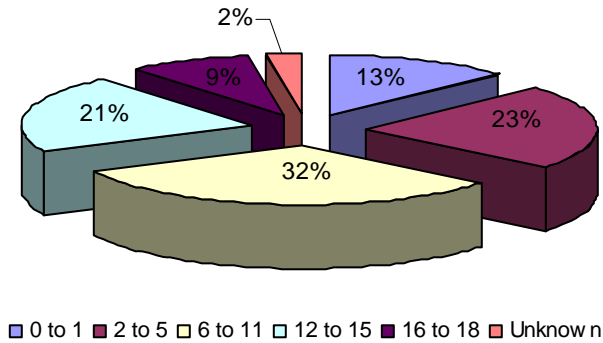
Chart 17a: Ethnicity of Children in True Reports



⁵ Table three, and each subsequent demographic table, divides up “other” races and ethnicities into the following categories: “Hispanic,” “More than One Race,” “Asian” (includes Indonesian, Cambodian, Hmong and Vietnamese), “AIAN” (includes Native American, Alaskan Native and American Indian) and “NAPI” (includes Native Hawaiian and other Pacific Islanders).

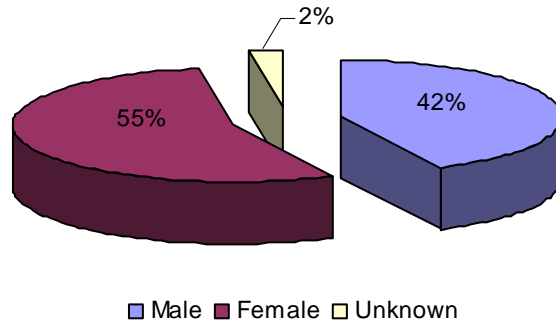
Children between the ages of 6 and 11 represented the largest group of children involved in true maltreatment reports (32%). These percentages were similar to the previous quarter.

Chart 17b: Ages of Children in True Reports



More female children (55%) than male children (42%) were involved in true maltreatment reports. These percentages were also similar to the previous quarter.

Chart 17c: Gender of Children in True Reports



Children Involved in Allegations of True Maltreatment Reports

During the quarter, the majority of the 2,842 children involved in true maltreatment reports were involved in neglect allegations (78%), followed by physical abuse allegations (33%) and sexual abuse allegations (30%)⁶.

**Table 4: Percentage of Children Involved in True Allegations of Maltreatment
3rd Quarter SFY 2007 – 4th Quarter SFY 2007**

| | 3rd Quarter | | 4th Quarter | |
|-----------------------|-------------------------------|-----|-------------------------------|-----|
| Neglect | 1,588 | 67% | 2,229 | 78% |
| Physical Abuse | 491 | 21% | 952 | 33% |
| Sexual Abuse | 536 | 23% | 843 | 30% |

⁶ The total number of children represented will outnumber the total children involved in true maltreatment reports because a child can be involved in more than one allegation. Therefore, the sum of percentages of children involved in maltreatment reports will be greater than 100 percent.

Part III: Description of Population and Services

Section II: Foster Care

Characteristics of Children in Foster Care

During the quarter, 4,705 children were in foster care. This number includes children who remained in care from previous quarters as well as children who came into care during the quarter. The following table outlines the characteristics of children who were in care during the quarter.

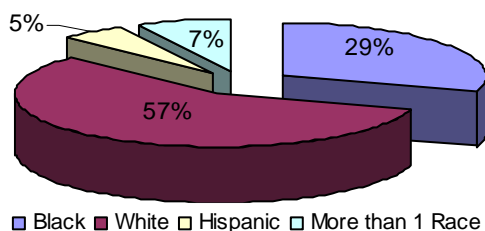
Table 5: Characteristics of Children in Foster Care During the Quarter
4th Quarter SFY 2007

| Age | Gender | White | Black | Asian | AIAN | NAPI | Hispanic | More Than 1 Race | Total |
|---------------|--------|--------------|--------------|-----------|----------|----------|------------|------------------|--------------|
| 0 to 1 | Female | 168 | 94 | 1 | 1 | 1 | 17 | 24 | 306 |
| | Male | 192 | 108 | 1 | 1 | 0 | 22 | 25 | 349 |
| 2 to 5 | Female | 316 | 168 | 2 | 0 | 0 | 38 | 34 | 558 |
| | Male | 331 | 153 | 0 | 3 | 1 | 36 | 51 | 575 |
| 6 to 11 | Female | 305 | 148 | 1 | 0 | 1 | 26 | 44 | 525 |
| | Male | 340 | 158 | 1 | 1 | 1 | 44 | 41 | 586 |
| 12 to 15 | Female | 306 | 145 | 2 | 1 | 0 | 20 | 39 | 513 |
| | Male | 254 | 125 | 0 | 1 | 2 | 12 | 37 | 431 |
| 16 to 18 | Female | 211 | 112 | 2 | 0 | 0 | 15 | 21 | 361 |
| | Male | 157 | 91 | 0 | 1 | 1 | 10 | 21 | 281 |
| 18+ | Female | 52 | 41 | 0 | 0 | 0 | 3 | 9 | 105 |
| | Male | 57 | 38 | 1 | 0 | 0 | 3 | 4 | 103 |
| Total* | | 2,689 | 1,381 | 11 | 9 | 7 | 246 | 350 | 4,693 |

*Demographic information had not been entered into CHRIS for 12 children.

The chart below shows that 57 percent of the children in foster care during the quarter were white and 29 percent were black. National data reveal that only 41 percent of the children in the national foster care system were white, while 32 percent of the children were black⁷.

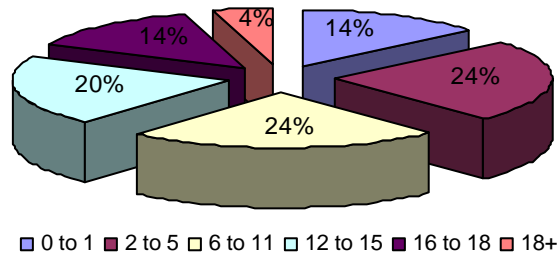
Chart 18a: Ethnicity of Children in Care During the Quarter



⁷ Adoption and Foster Care Analysis and Reporting System (AFCARS) preliminary data submitted for children in foster care between 10/1/2004 and 9/30/2005 as of September 2006.

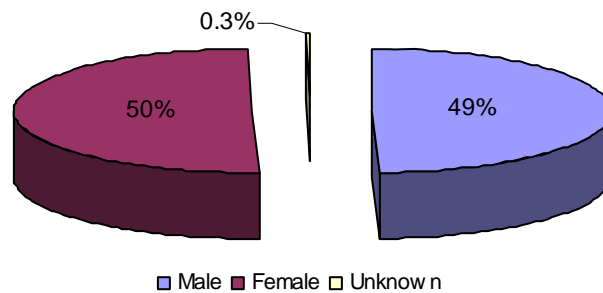
The following chart shows that children between the ages of 2 to 5 (24%) and 6 to 11 (24%) represented the largest groups of children who were in care during the quarter. These percentages were similar to those of the previous quarter.

Chart 18b: Ages of Children in Foster Care During the Quarter



The following chart shows that 50 percent of the children in foster care during the quarter were female and 49 percent were male. These percentages were also similar to the previous quarter.

Chart 18c: Gender of Children in Foster Care During the Quarter



At the end of the quarter, there were 3,728 children in foster care, a decrease from the 3,846 children in care at the end of the third quarter. The following table outlines the characteristics of the children in foster care at the end of the fourth quarter.

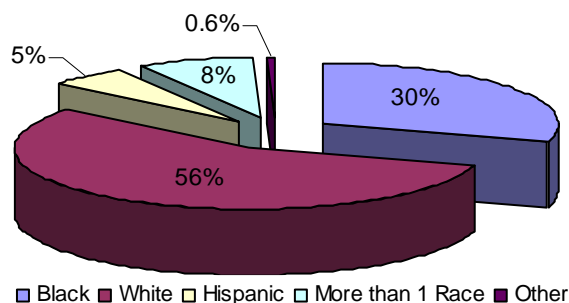
**Table 6: Characteristics of Children in Foster Care at the End of the Quarter
4th Quarter SFY 2007**

| Age | Gender | White | Black | Asian | AIAN | NAPI | Hispanic | More Than 1 Race | Total |
|---------------|--------|--------------|--------------|----------|----------|----------|------------|------------------|--------------|
| 0 to 1 | Female | 131 | 74 | 0 | 1 | 0 | 15 | 18 | 239 |
| | Male | 133 | 82 | 1 | 1 | 0 | 18 | 20 | 255 |
| 2 to 5 | Female | 236 | 136 | 2 | 0 | 0 | 28 | 31 | 433 |
| | Male | 251 | 116 | 0 | 3 | 0 | 26 | 45 | 441 |
| 6 to 11 | Female | 235 | 119 | 1 | 0 | 1 | 20 | 33 | 409 |
| | Male | 261 | 127 | 1 | 1 | 1 | 35 | 36 | 462 |
| 12 to 15 | Female | 241 | 109 | 1 | 1 | 0 | 20 | 32 | 404 |
| | Male | 220 | 108 | 0 | 0 | 2 | 12 | 35 | 377 |
| 16 to 18 | Female | 183 | 91 | 2 | 0 | 0 | 13 | 20 | 309 |
| | Male | 135 | 81 | 0 | 1 | 1 | 8 | 16 | 242 |
| 18+ | Female | 33 | 31 | 0 | 0 | 0 | 2 | 8 | 74 |
| | Male | 42 | 30 | 1 | 0 | 0 | 2 | 2 | 77 |
| Total* | | 2,101 | 1,104 | 9 | 8 | 5 | 199 | 296 | 3,722 |

*Demographic information had not been entered into CHRIS for 6 children.

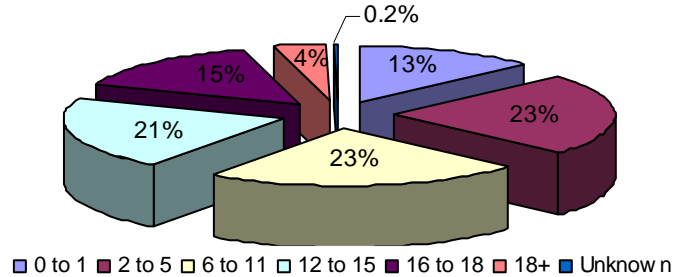
The chart below shows that 56 percent of the children in foster care at the end of the quarter were white, while 30 percent of the children were black. These percentages were consistent with the previous four quarters.

Chart 19a: Ethnicity of Children in Foster Care at the End of the Quarter



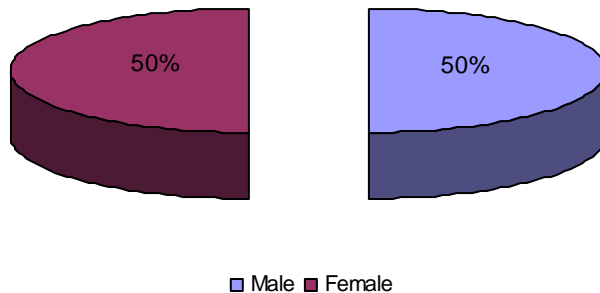
The following chart shows that children between the ages of 2 to 5 (23%) and 6 to 11 (23%) represented the largest groups of children who were in care at the end of the quarter.

Chart 19b: Ages of Children in Foster Care at the End of the Quarter



The following chart shows that 50 percent of the children in foster care at the end of the quarter were female and 50 percent were male. These percentages were also similar to the previous quarter.

Chart 19c: Gender of Children in Foster Care at the End of the Quarter



Entries into Foster Care

The data show that 986 children entered foster care during the fourth quarter, a decrease from the third quarter (1,155).

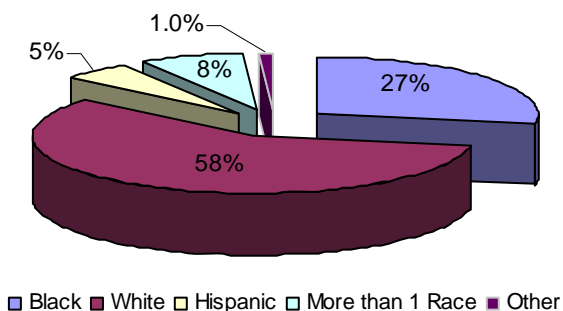
**Table 7: Characteristics of Children Entering Foster Care During the Quarter
4th Quarter SFY 2007**

| Age | Gender | White | Black | Asian | AIAN | NAPI | Hispanic | More Than 1 Race | Total |
|---------------|--------|------------|------------|----------|----------|----------|-----------|------------------|------------|
| 0 to 1 | Female | 48 | 26 | 1 | 1 | 0 | 5 | 10 | 91 |
| | Male | 69 | 33 | 1 | 0 | 0 | 4 | 15 | 122 |
| 2 to 5 | Female | 74 | 31 | 0 | 0 | 0 | 6 | 4 | 115 |
| | Male | 53 | 27 | 0 | 0 | 0 | 5 | 9 | 94 |
| 6 to 11 | Female | 79 | 25 | 0 | 0 | 1 | 8 | 9 | 122 |
| | Male | 69 | 39 | 0 | 0 | 1 | 9 | 7 | 125 |
| 12 to 15 | Female | 75 | 37 | 2 | 0 | 0 | 6 | 5 | 125 |
| | Male | 52 | 19 | 0 | 0 | 2 | 4 | 8 | 85 |
| 16 to 18 | Female | 35 | 19 | 0 | 0 | 0 | 2 | 2 | 58 |
| | Male | 22 | 14 | 0 | 0 | 0 | 4 | 5 | 46 |
| Total* | | 576 | 270 | 4 | 1 | 4 | 53 | 53 | 983 |

*Demographic data had not been entered into CHRIS for three children.

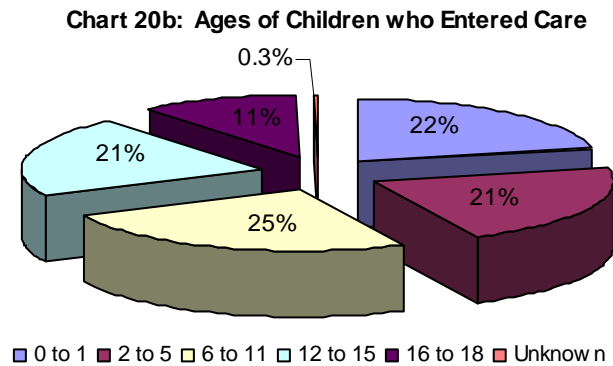
The chart below shows that 58 percent of the children who entered foster care during the quarter were white, while 27 percent of the children were black. National data indicate that 47 percent of the children who entered care were white, 26 percent were black and 18 percent were Hispanic⁸.

Chart 20a: Ethnicity of Children who Entered Care

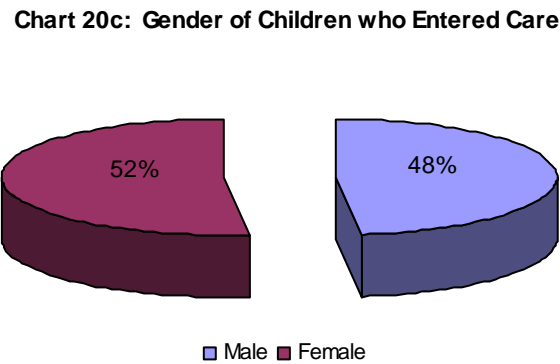


⁸ Adoption and Foster Care Analysis and Reporting System (AFCARS) preliminary data submitted for children in foster care between 10/1/2004 and 9/30/2005 as of September 2006.

The following chart shows that children between the ages of two and five (25%) represented the largest group of children who entered foster care during the quarter.



The following chart shows the gender of the children who entered foster care during the second quarter. Of the 986 children who entered care, 52 percent of the children were female and 48 percent were male.



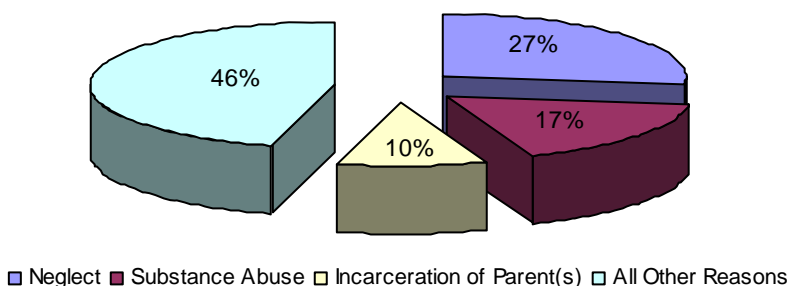
The reasons for entry into foster care during the quarter (Table 8) remained very similar to the reasons for children’s entry into care at the end of the quarter (Table 9). Neglect and substance abuse⁹ were the most prevalent reasons children entered care.

**Table 8: Reasons Children were Placed in Foster Care During the Quarter by Age
4th Quarter SFY 2007**

| | 0 to 1 | 2 to 5 | 6 to 11 | 12 to 15 | 16 to 18 | 18+ | Total |
|------------------------------|--------------|--------------|--------------|--------------|------------|-----------|--------------|
| Neglect | 456 | 603 | 654 | 416 | 124 | 3 | 2,256 |
| Substance Abuse | 377 | 366 | 361 | 282 | 82 | 2 | 1,470 |
| Parent Incarceration | 158 | 231 | 249 | 158 | 39 | 0 | 835 |
| Physical Abuse | 153 | 165 | 216 | 190 | 68 | 2 | 794 |
| Child’s Behavior | 0 | 24 | 99 | 258 | 118 | 1 | 500 |
| Abandonment | 52 | 69 | 95 | 109 | 63 | 1 | 389 |
| Inadequate Housing | 129 | 160 | 202 | 126 | 34 | 2 | 653 |
| Caretaker Illness | 86 | 112 | 150 | 163 | 55 | 3 | 569 |
| Sexual Abuse | 31 | 86 | 170 | 174 | 43 | 1 | 505 |
| Truancy | 6 | 15 | 41 | 65 | 32 | 2 | 161 |
| Child’s Disability | 14 | 10 | 22 | 18 | 2 | 1 | 67 |
| Parent Death | 6 | 6 | 15 | 11 | 7 | 0 | 45 |
| Sex Offender | 4 | 4 | 6 | 22 | 8 | 0 | 44 |
| Relinquishment | 2 | 3 | 8 | 10 | 2 | 0 | 25 |
| Adoption | 0 | 0 | 0 | 2 | 0 | 0 | 2 |
| Managed Mental Health | 0 | 0 | 1 | 1 | 1 | 0 | 3 |
| Other | 2 | 3 | 25 | 12 | 3 | 0 | 45 |
| Teen Parent in Care | 60 | 5 | 0 | 1 | 3 | 0 | 69 |
| Total* | 1,536 | 1,862 | 2,314 | 2,018 | 684 | 18 | 8,432 |

*There are more reasons for entry than children in care because a child may have more than one reason for entry.

**Chart 21: Reasons Children in Care During the Quarter
were Placed in Foster Care**



⁹ Of the 1,470 reasons for entry attributed to substance abuse, substance abuse by children accounted for 110 reasons for entry (7%), while substance abuse by parents accounted for 1,360 reasons for entry (93%).

**Table 9: Reasons Children in Foster Care at the End of the Quarter were Placed in Care
3rd Quarter SFY 2007**

| | Gender | White | Black | Asian | AIAN | NAPI | His-panic | More Than 1 Race | Total |
|------------------------------|---------------|--------------|--------------|--------------|-------------|-------------|------------------|-------------------------|--------------|
| Neglect | <i>Female</i> | 549 | 230 | 2 | 1 | 0 | 49 | 74 | 905 |
| | <i>Male</i> | 563 | 254 | 2 | 2 | 1 | 53 | 68 | 943 |
| Substance Abuse | <i>Female</i> | 380 | 141 | 3 | 0 | 0 | 25 | 31 | 580 |
| | <i>Male</i> | 331 | 146 | 0 | 4 | 0 | 32 | 47 | 560 |
| Parent Incarceration | <i>Female</i> | 185 | 97 | 0 | 1 | 0 | 27 | 36 | 346 |
| | <i>Male</i> | 195 | 81 | 0 | 4 | 0 | 27 | 33 | 340 |
| Physical Abuse | <i>Female</i> | 164 | 107 | 0 | 0 | 1 | 18 | 25 | 315 |
| | <i>Male</i> | 182 | 88 | 1 | 0 | 3 | 18 | 20 | 312 |
| Child's Behavior | <i>Female</i> | 123 | 56 | 1 | 0 | 0 | 6 | 20 | 206 |
| | <i>Male</i> | 133 | 51 | 1 | 0 | 0 | 5 | 17 | 207 |
| Abandonment | <i>Female</i> | 69 | 57 | 0 | 0 | 0 | 7 | 11 | 144 |
| | <i>Male</i> | 84 | 70 | 0 | 0 | 0 | 6 | 13 | 173 |
| Inadequate Housing | <i>Female</i> | 142 | 84 | 0 | 0 | 0 | 15 | 26 | 267 |
| | <i>Male</i> | 163 | 91 | 0 | 1 | 0 | 10 | 26 | 291 |
| Caretaker Illness | <i>Female</i> | 154 | 53 | 0 | 0 | 0 | 7 | 19 | 233 |
| | <i>Male</i> | 138 | 63 | 0 | 3 | 0 | 9 | 21 | 234 |
| Sexual Abuse | <i>Female</i> | 167 | 72 | 3 | 0 | 0 | 17 | 25 | 284 |
| | <i>Male</i> | 77 | 24 | 1 | 0 | 0 | 7 | 13 | 122 |
| Truancy | <i>Female</i> | 43 | 21 | 0 | 0 | 0 | 4 | 5 | 73 |
| | <i>Male</i> | 37 | 14 | 0 | 0 | 0 | 0 | 5 | 56 |
| Child's Disability | <i>Female</i> | 21 | 6 | 0 | 0 | 0 | 0 | 1 | 28 |
| | <i>Male</i> | 26 | 4 | 0 | 0 | 0 | 2 | 2 | 34 |
| Parent Death | <i>Female</i> | 9 | 5 | 0 | 0 | 0 | 1 | 4 | 19 |
| | <i>Male</i> | 6 | 5 | 0 | 1 | 0 | 1 | 7 | 20 |
| Sex Offender | <i>Female</i> | 8 | 1 | 0 | 0 | 0 | 0 | 1 | 10 |
| | <i>Male</i> | 22 | 5 | 0 | 0 | 0 | 1 | 2 | 30 |
| Relinquishment | <i>Female</i> | 3 | 4 | 0 | 0 | 0 | 0 | 1 | 8 |
| | <i>Male</i> | 9 | 2 | 0 | 0 | 0 | 0 | 3 | 14 |
| Managed Mental Health | <i>Female</i> | 0 | 0 | 0 | 0 | 0 | 0 | 0 | 0 |
| | <i>Male</i> | 2 | 1 | 0 | 0 | 0 | 0 | 0 | 3 |
| Adoption | <i>Female</i> | 0 | 1 | 0 | 0 | 0 | 0 | 0 | 1 |
| | <i>Male</i> | 1 | 0 | 0 | 0 | 0 | 0 | 0 | 1 |
| Teen Parent in Care | <i>Female</i> | 9 | 16 | 0 | 0 | 0 | 6 | 4 | 35 |
| | <i>Male</i> | 8 | 12 | 0 | 0 | 0 | 2 | 0 | 22 |
| Other | <i>Female</i> | 11 | 7 | 0 | 0 | 0 | 0 | 1 | 19 |
| | <i>Male</i> | 7 | 14 | 0 | 0 | 0 | 0 | 1 | 22 |
| Total* | | 4,021 | 1,883 | 14 | 17 | 5 | 355 | 562 | 6,857 |

*There are more reasons for entry than children in care because a child may have more than one reason for entry.

Exits from Foster Care

During the quarter, 1,032 children left foster care, which was an increase from the previous quarter (937).

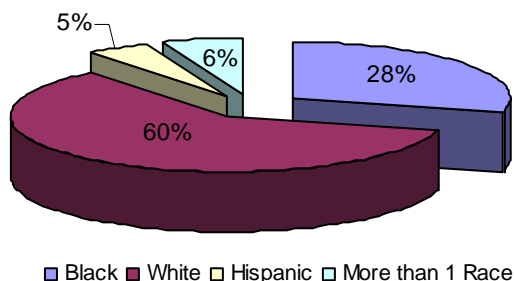
**Table 10: Characteristics of Children Exiting Foster Care During the Quarter
4th Quarter SFY 2007**

| Age | Gender | White | Black | Asian | AIAN | NAPI | Hispanic | More Than 1 Race | Total |
|---------------|--------|------------|------------|----------|----------|----------|-----------|------------------|--------------|
| 0 to 1 | Female | 40 | 21 | 1 | 0 | 1 | 2 | 8 | 73 |
| | Male | 59 | 27 | 0 | 0 | 0 | 4 | 6 | 96 |
| 2 to 5 | Female | 84 | 32 | 0 | 0 | 0 | 11 | 4 | 131 |
| | Male | 80 | 38 | 0 | 0 | 1 | 10 | 7 | 136 |
| 6 to 11 | Female | 75 | 30 | 0 | 0 | 0 | 7 | 11 | 123 |
| | Male | 83 | 36 | 0 | 0 | 0 | 9 | 6 | 134 |
| 12 to 15 | Female | 71 | 38 | 1 | 0 | 0 | 0 | 7 | 117 |
| | Male | 36 | 19 | 0 | 1 | 0 | 0 | 2 | 58 |
| 16 to 18 | Female | 43 | 31 | 0 | 0 | 0 | 3 | 3 | 80 |
| | Male | 37 | 17 | 0 | 0 | 0 | 4 | 6 | 64 |
| 18+ | Female | 5 | 4 | 0 | 0 | 0 | 0 | 0 | 9 |
| | Male | 2 | 1 | 0 | 0 | 0 | 0 | 2 | 5 |
| Total* | | 615 | 294 | 2 | 1 | 2 | 50 | 62 | 1,026 |

*Demographic data had not been entered into CHRIS for six children.

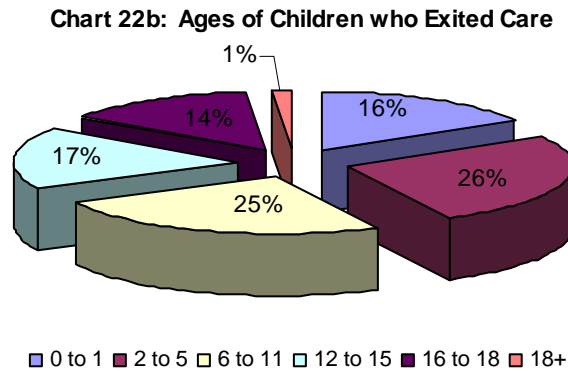
Of the 1,032 children who left foster care, 60 percent were white and 28 percent were black. National data indicate that 45 percent of the children who left foster care were white and 28 percent were black¹⁰. During the same quarter one year ago, 60 percent of the children who exited foster care were white, whereas 27 percent were black.

Chart 22a: Ethnicity of Children who Exited Care

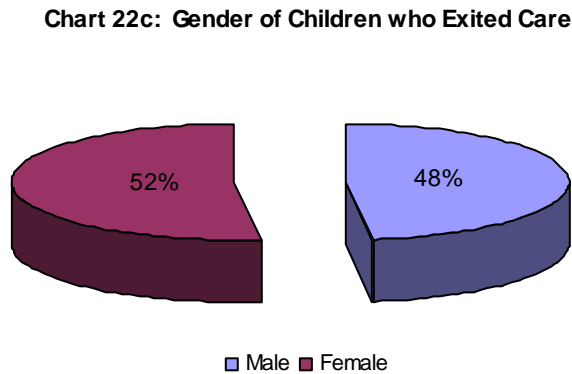


¹⁰ Adoption and Foster Care Analysis and Reporting System (AFCARS) preliminary data submitted for children in foster care between 10/1/2004 and 9/30/2005 as of September 2006.

The following chart shows that children between the ages of 2 and 5 (26%) and 6 and 11 (25%) represented the largest groups of children who left foster care during the quarter.



Of the children who left care during the quarter, 52 percent were female and 48 percent were male.



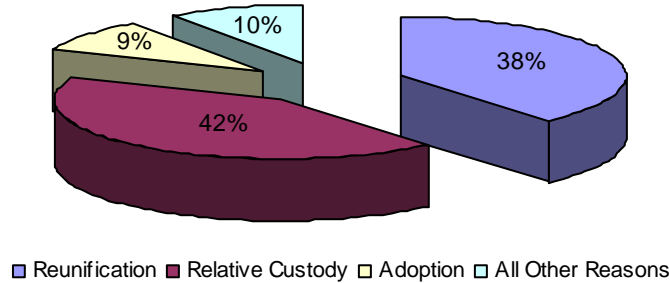
**Table 11: Reasons Children Exited Foster Care by Age
4th Quarter SFY 2007**

| Reason | Age | | | | | | Total |
|----------------------|------------|------------|------------|------------|------------|-----------|--------------|
| | 0 to 1 | 2 to 5 | 6 to 11 | 12 to 15 | 16 to 18 | 18+ | |
| Reunification | 78 | 105 | 101 | 75 | 36 | 0 | 395 |
| Relative Custody | 77 | 119 | 117 | 75 | 49 | 0 | 437 |
| Adoption | 11 | 41 | 31 | 11 | 0 | 0 | 94 |
| Child Aged Out | 0 | 0 | 0 | 0 | 48 | 12 | 60 |
| Non-Relative Custody | 3 | 1 | 8 | 12 | 6 | 0 | 30 |
| Custody Transfer | 0 | 0 | 0 | 1 | 1 | 0 | 2 |
| Emancipation | 0 | 0 | 0 | 0 | 4 | 2 | 6 |
| Child Death | 0 | 1 | 0 | 1 | 0 | 0 | 2 |
| Total* | 169 | 267 | 257 | 175 | 144 | 14 | 1,026 |

*Demographic data had not been entered into CHRIS for six children.

The most prevalent reason that children left foster care during the quarter was relative custody (42%). The second most prevalent reason was reunification (38%). National data indicate that the three most prevalent reasons children left care were reunification (54%), adoption (18%) and relative care (11%)¹¹.

Chart 23: Most Prevalent Reasons Children Left Care



¹¹ Adoption and Foster Care Analysis and Reporting System (AFCARS) preliminary data submitted for children in foster care between 10/1/2004 and 9/30/2005 as of September 2006.

Permanency Goals of Children in Foster Care

The Division maintains two primary goals for children in foster care: safety and permanency. The second of these concerns is expressed by setting a permanency goal for each child in foster care. For the fourth quarter, returning home remained the most prevalent goal among children in foster care at 49 percent. National data reveal very similar figures to the numbers shown here¹².

**Table 12: Permanency Goals of Children in Foster Care
3rd Quarter SFY 2007 – 4th Quarter SFY 2007**

| | 3rd Quarter | | 4th Quarter | | National |
|----------------------------|--------------|-------------|--------------|-------------|-------------|
| Return Home | 1,859 | 48% | 1,820 | 49% | 51% |
| Adoption | 672 | 17% | 656 | 18% | 20% |
| Independence | 455 | 12% | 426 | 11% | n/a |
| Remain at Home | 335 | 9% | 356 | 10% | n/a |
| Relative Care | 136 | 4% | 127 | 3% | 4% |
| Guardianship | 15 | .4% | 16 | .4% | 3% |
| Emancipation | 3 | .08% | 1 | .03% | 6% |
| Long Term Care | 0 | 0% | 0 | 0% | 7% |
| Not Yet Established | 371 | 9% | 326 | 9% | 8% |
| Total* | 3,846 | 100% | 3,728 | 100% | 100% |

*Sum of individual percentages may not equal 100% due to rounding.

¹² Adoption and Foster Care Analysis and Reporting System (AFCARS) preliminary data submitted for children in foster care between 10/1/2004 and 9/30/2005 as of September 2006.

Length of Stay of Children in Foster Care

For the 4,705 children in foster care during the quarter, 56 percent were in care less than one year. A comparison to national data indicates that children in the state’s foster care system remain in care a decidedly shorter amount of time¹³.

**Table 13a: Length of Stay of Children in Foster Care (Including Relative Care)
4th Quarter SFY 2007**

| | Number | Percentage | National |
|--------------------------|---------------|-------------------|-----------------|
| Less than 30 days | 534 | 11% | 5% |
| 30-90 Days | 635 | 14% | 20% |
| 3-6 Months | 603 | 13% | |
| 6-12 Months | 867 | 18% | 17% |
| 12-24 Months | 885 | 19% | 21% |
| 24-36 Months | 480 | 10% | 12% |
| 36+ Months | 701 | 15% | 25% |
| Total* | 4,705 | 100% | 100% |

**Table 13b: Length of Stay of Children in Relative Care
4th Quarter SFY 2007**

| | Number | Percentage |
|--------------------------|---------------|-------------------|
| Less than 30 days | 10 | 2% |
| 30-90 Days | 62 | 13% |
| 3-6 Months | 68 | 15% |
| 6-12 Months | 127 | 27% |
| 12-24 Months | 94 | 20% |
| 24-36 Months | 65 | 14% |
| 36+ Months | 41 | 9% |
| Total | 467 | 100% |

**Table 13c: Length of Stay of Children in Foster Care (Excluding Relative Care)
3rd Quarter SFY 2007**

| | Number | Percentage* |
|--------------------------|---------------|--------------------|
| Less than 30 days | 524 | 12% |
| 30-90 Days | 573 | 14% |
| 3-6 Months | 535 | 13% |
| 6-12 Months | 740 | 17% |
| 12-24 Months | 791 | 19% |
| 24-36 Months | 415 | 10% |
| 36+ Months | 660 | 16% |
| Total | 4,238 | 100% |

*Sum of individual percentages may not equal 100% due to rounding.

¹³ Adoption and Foster Care Analysis and Reporting System (AFCARS) preliminary data submitted for children in foster care between 10/1/2004 and 9/30/2005 as of September 2006.

Number of Placements of Children in Foster Care

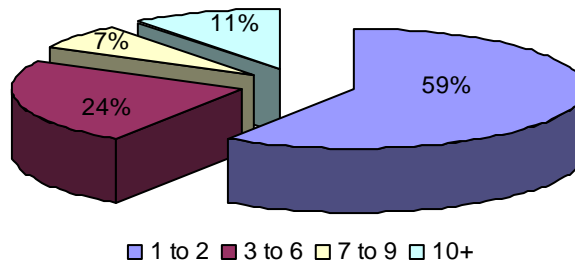
For the fourth quarter, 59 percent of children in care at the end of the quarter experienced two or fewer placements, which was three percentage points lower than the previous quarter.

**Table 14: Number of Placements of Children in Foster Care
3rd Quarter SFY 2007 – 4th Quarter SFY 2007**

| | 3rd Quarter | | 4th Quarter | |
|-----------------------|--------------|-------------|--------------|-------------|
| 1-2 Placements | 2,393 | 62% | 2,201 | 59% |
| 3-6 Placements | 853 | 22% | 890 | 24% |
| 7-9 Placements | 233 | 6% | 243 | 7% |
| 10+ Placements | 367 | 10% | 394 | 11% |
| Total | 3,846 | 100% | 3,728 | 100% |

*Sum of individual percentages may not equal 100% due to rounding.

Chart 24: Number of Placements for Children in Care at the End of the Quarter



Characteristics of Children who Experienced Two or More Placements

At the end of the fourth quarter, 3,728 children were in foster care. Of those, 2,087 children experienced two or more placements while in care.

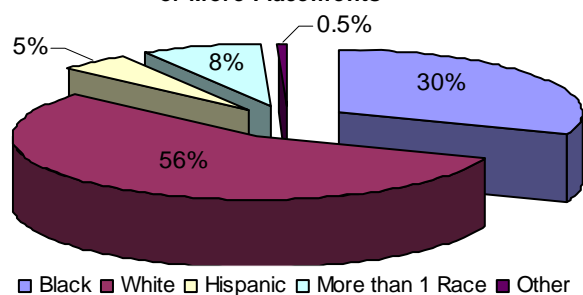
**Table 15: Characteristics of Children who Experienced Two or More Placements
4th Quarter SFY 2007**

| Age | Gender | White | Black | Asian | AIAN | NAPI | Hispanic | More Than 1 Race | Total |
|--------------|--------|--------------|------------|----------|----------|----------|------------|------------------|--------------|
| 0 to 1 | Female | 33 | 20 | 0 | 0 | 0 | 4 | 7 | 64 |
| | Male | 42 | 19 | 1 | 1 | 0 | 7 | 6 | 76 |
| 2 to 5 | Female | 95 | 51 | 0 | 0 | 0 | 14 | 13 | 173 |
| | Male | 119 | 50 | 3 | 3 | 0 | 13 | 16 | 201 |
| 6 to 11 | Female | 119 | 74 | 0 | 0 | 0 | 12 | 17 | 222 |
| | Male | 171 | 81 | 1 | 1 | 0 | 21 | 24 | 298 |
| 12 to 15 | Female | 157 | 76 | 1 | 1 | 0 | 9 | 23 | 266 |
| | Male | 152 | 73 | 0 | 0 | 0 | 6 | 27 | 258 |
| 16 to 18 | Female | 155 | 97 | 0 | 0 | 0 | 9 | 20 | 282 |
| | Male | 127 | 94 | 1 | 1 | 1 | 8 | 13 | 245 |
| 18+ | Female | 0 | 0 | 0 | 0 | 0 | 0 | 0 | 0 |
| | Male | 0 | 0 | 0 | 0 | 0 | 0 | 0 | 0 |
| Total | | 1,170 | 635 | 3 | 7 | 1 | 103 | 166 | 2,085 |

*Demographic data had not been entered into CHRIS for two children.

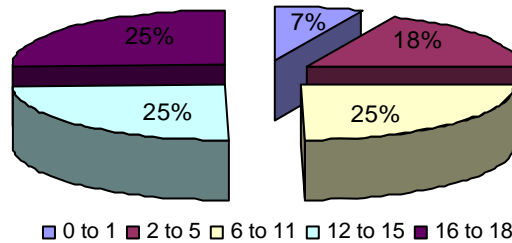
Of the 2,087 children who experienced two or more placements, 56 percent were white and 30 percent were black. These percentages were similar to the previous quarter.

Chart 25a: Ethnicity of Children who Experienced Two or More Placements



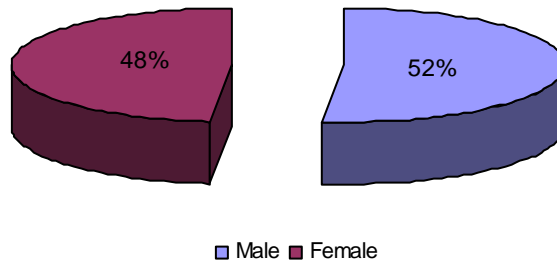
Children between the ages of 2 to 5 (25%), 6 to 11 (25%) and 12 to 15 (25%) all represented the largest groups of children who experienced two or more placements.

Chart 25b: Ages of Children who Experienced Two or More Placements



More male children (52%) than female children (48%) experienced two or more placements, similar to the previous quarter.

Chart 25c: Gender of Children who Experienced Two or More Placements



Current Placement of Children in Foster Care

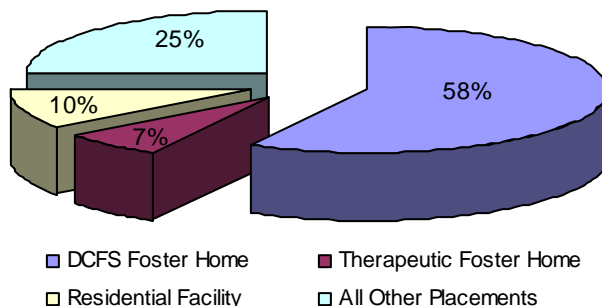
More children in foster care were placed in DCFS foster homes (58%) at the end of the fourth quarter than in any other type of foster care placement.

Table 16: Current Placement of Children in Foster Care at the End of the Quarter

| Placement | Age | | | | | | Total |
|-----------------------------------|------------|------------|------------|------------|------------|------------|--------------|
| | 0 to 1 | 2 to 5 | 6 to 11 | 12 to 15 | 16 to 18 | Over 18 | |
| DCFS Foster Home | 411 | 689 | 486 | 343 | 202 | 47 | 2,178 |
| Relative Care | 23 | 44 | 39 | 16 | 6 | 1 | 129 |
| Therapeutic Foster Home | 1 | 22 | 127 | 64 | 36 | 7 | 257 |
| Pre-Adoptive Home | 14 | 50 | 43 | 12 | 3 | 0 | 122 |
| Emergency Shelter | 3 | 7 | 27 | 36 | 38 | 0 | 111 |
| Residential Facility | 19 | 11 | 57 | 144 | 102 | 27 | 360 |
| Youth Services | 0 | 0 | 0 | 8 | 22 | 2 | 32 |
| Runaway | 0 | 0 | 0 | 12 | 53 | 5 | 70 |
| Trial Home Visit | 16 | 44 | 46 | 26 | 15 | 0 | 147 |
| Hospital/Medical | 2 | 0 | 5 | 14 | 3 | 2 | 26 |
| ASAP CRT | 0 | 0 | 1 | 9 | 6 | 2 | 19 |
| Independent Living | 0 | 0 | 0 | 1 | 4 | 53 | 58 |
| Incarceration | 0 | 0 | 0 | 9 | 10 | 2 | 21 |
| Temporary Placement | 3 | 7 | 6 | 5 | 4 | 1 | 26 |
| Sub-Acute CRT | 0 | 2 | 24 | 70 | 34 | 2 | 132 |
| Acute CRT | 0 | 0 | 8 | 7 | 7 | 0 | 22 |
| High Risk Emergency Crisis Center | 0 | 0 | 2 | 4 | 2 | 0 | 8 |
| ASAP Residential Treatment | 0 | 0 | 0 | 1 | 5 | 0 | 6 |
| Unknown* | 3 | 0 | 2 | 0 | 0 | 0 | 5 |
| Total | 495 | 876 | 873 | 781 | 552 | 151 | 3,728 |

*Unknown due to data entry after data were collected for the report.

Chart 26: Current Placement of Children in Foster Care



Characteristics of Children on Runaway Status at the End of the Quarter

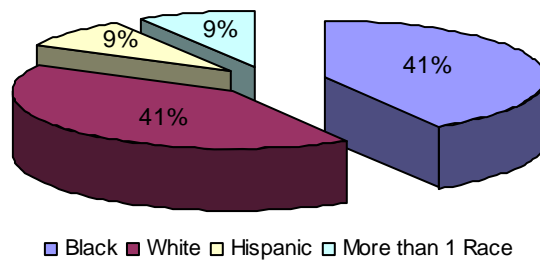
Seventy children were on runaway status at the end of the fourth quarter. This number represented a decrease from the previous quarter (75).

**Table 17: Characteristics of Children on Runaway Status at the End of the Quarter
4th Quarter SFY 2007**

| Age | Gender | White | Black | Asian | AIAN | NAPI | Hispanic | More Than 1 Race | Total |
|--------------|--------|-----------|-----------|----------|----------|----------|----------|------------------|-----------|
| 0 to 1 | Female | 0 | 0 | 0 | 0 | 0 | 0 | 0 | 0 |
| | Male | 0 | 0 | 0 | 0 | 0 | 0 | 0 | 0 |
| 2 to 5 | Female | 0 | 0 | 0 | 0 | 0 | 0 | 0 | 0 |
| | Male | 0 | 0 | 0 | 0 | 0 | 0 | 0 | 0 |
| 6 to 11 | Female | 0 | 0 | 0 | 0 | 0 | 0 | 0 | 0 |
| | Male | 0 | 0 | 0 | 0 | 0 | 0 | 0 | 0 |
| 12 to 15 | Female | 4 | 5 | 0 | 0 | 0 | 1 | 0 | 10 |
| | Male | 0 | 0 | 0 | 0 | 0 | 1 | 1 | 2 |
| 16 to 18 | Female | 13 | 11 | 0 | 0 | 0 | 2 | 3 | 29 |
| | Male | 9 | 11 | 0 | 0 | 0 | 2 | 2 | 24 |
| 18+ | Female | 1 | 2 | 0 | 0 | 0 | 0 | 0 | 3 |
| | Male | 2 | 0 | 0 | 0 | 0 | 0 | 0 | 2 |
| Total | | 29 | 29 | 0 | 0 | 0 | 6 | 6 | 70 |

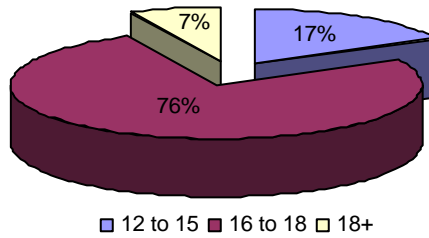
Of the children on runaway status at the end of the quarter, 41 percent were white and 41 percent were black. This was different to the children on runaway state at the end of the third quarter, when 41 percent were white and 47 percent were black.

Chart 27a: Ethnicity of Children on Runaway Status at the End of the Quarter



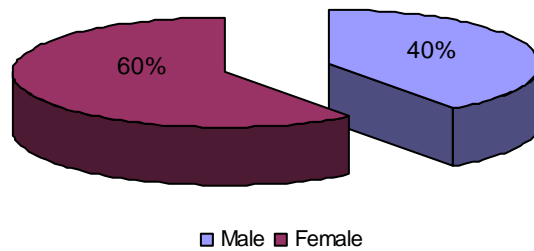
At the end of the quarter, 76 percent of the children on runaway status were between the ages of 16 and 18, which was a four percentage point increase over the previous quarter.

Chart 27b: Ages of Children on Runaway Status at the End of the Quarter



More female children (60%) than male children (40%) were on runaway status at the end of the quarter.

Chart 27c: Gender of Children on Runaway Status at the End of the Quarter



Characteristics of Children in Relative Care

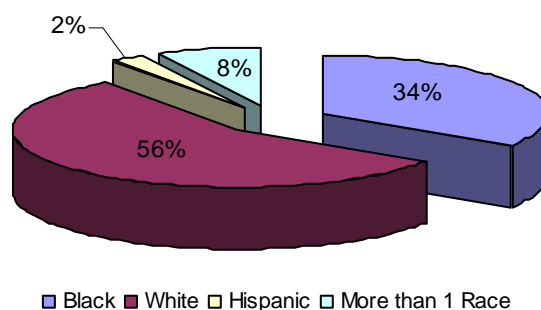
During the fourth quarter, 467 children were in relative care, an increase from the previous quarter (430). This number includes children who remained in relative care from previous quarters as well as children who came into relative care during the quarter. The following table outlines the characteristics of children in relative care.

**Table 18: Characteristics of Children in Relative Care
4th Quarter SFY 2007**

| Age | Gender | White | Black | Asian | AIAN | NAPI | Hispanic | More Than 1 Race | Total |
|--------------|--------|------------|------------|----------|----------|----------|-----------|------------------|------------|
| 0 to 1 | Female | 18 | 10 | 0 | 0 | 0 | 0 | 4 | 32 |
| | Male | 18 | 8 | 0 | 0 | 0 | 3 | 2 | 31 |
| 2 to 5 | Female | 48 | 24 | 0 | 0 | 0 | 5 | 1 | 78 |
| | Male | 47 | 30 | 0 | 0 | 0 | 2 | 4 | 83 |
| 6 to 11 | Female | 42 | 23 | 1 | 0 | 0 | 0 | 8 | 74 |
| | Male | 24 | 25 | 1 | 0 | 0 | 0 | 5 | 55 |
| 12 to 15 | Female | 20 | 12 | 0 | 0 | 0 | 0 | 4 | 36 |
| | Male | 18 | 12 | 0 | 0 | 0 | 0 | 4 | 34 |
| 16 to 18 | Female | 18 | 10 | 1 | 0 | 0 | 1 | 1 | 31 |
| | Male | 5 | 4 | 0 | 0 | 0 | 0 | 2 | 11 |
| Over 18 | Female | 1 | 1 | 0 | 0 | 0 | 0 | 0 | 2 |
| | Male | 0 | 0 | 0 | 0 | 0 | 0 | 0 | 0 |
| Total | | 259 | 159 | 3 | 0 | 0 | 11 | 35 | 467 |

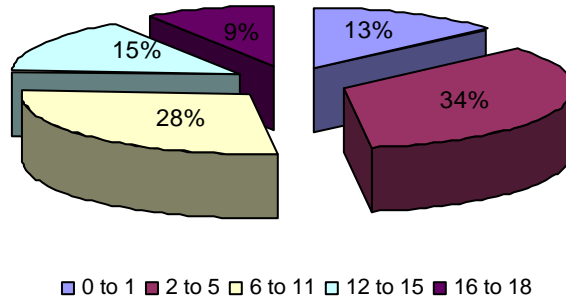
White children represented the highest percentage of children in relative care for the third quarter at 56 percent, similar to the previous quarter.

Chart 28a: Ethnicity of Children in Relative Care



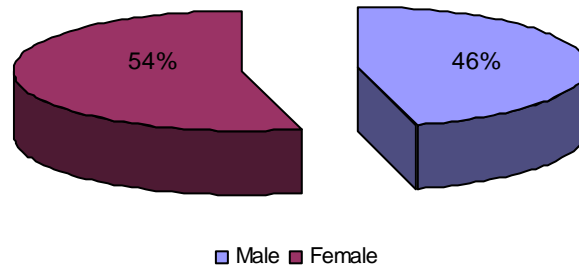
Children between the ages of 2 and 5 (34%) represented the largest age group of children in relative care, followed by children between the ages of 6 and 11 (28%).

Chart 28b: Ages of Children in Relative Care



Of the 467 children in relative care during the quarter, 54 percent were female and 46 percent were male, which were similar to the previous quarter.

Chart 28c: Gender of Children in Relative Care



Part III: Description of Population and Services
Section III: Adoption

Characteristics of Children with a Permanency Goal of Adoption During the Quarter

There were 709 children with a permanency goal of adoption during the quarter. This was a decrease from the previous quarter (752). The table below outlines those children’s characteristics.

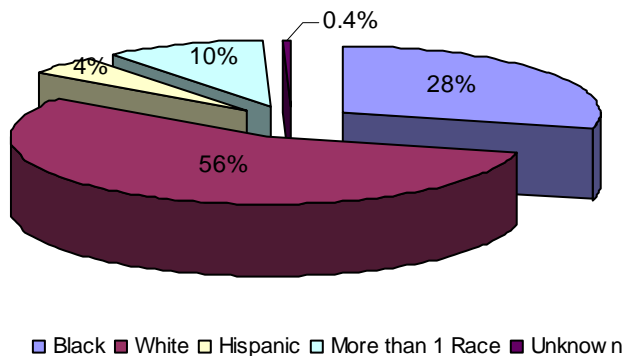
Table 19: Characteristics of Children with a Permanency Goal of Adoption During the Quarter
4th Quarter SFY 2007

| Age | Gender | White | Black | Asian | AIAN | NAPI | Hispanic | More Than 1 Race | Total |
|--------------|--------|------------|------------|----------|----------|----------|-----------|------------------|------------|
| 0 to 1 | Female | 17 | 10 | 0 | 0 | 0 | 0 | 2 | 29 |
| | Male | 15 | 7 | 0 | 0 | 0 | 1 | 3 | 26 |
| 2 to 5 | Female | 48 | 31 | 0 | 0 | 0 | 1 | 9 | 89 |
| | Male | 59 | 26 | 0 | 0 | 0 | 5 | 12 | 102 |
| 6 to 11 | Female | 53 | 27 | 0 | 0 | 0 | 7 | 12 | 99 |
| | Male | 76 | 32 | 0 | 0 | 0 | 11 | 7 | 126 |
| 12 to 15 | Female | 36 | 19 | 0 | 1 | 0 | 1 | 12 | 69 |
| | Male | 55 | 29 | 0 | 0 | 0 | 5 | 9 | 98 |
| 16 to 18 | Female | 22 | 6 | 0 | 0 | 0 | 0 | 3 | 31 |
| | Male | 18 | 14 | 0 | 0 | 0 | 0 | 2 | 34 |
| Over 18 | Female | 1 | 0 | 0 | 0 | 0 | 0 | 1 | 2 |
| | Male | 0 | 1 | 0 | 0 | 0 | 0 | 0 | 1 |
| Total | | 400 | 202 | 0 | 1 | 0 | 31 | 72 | 706 |

*Demographic data had not been entered into CHRIS for three children.

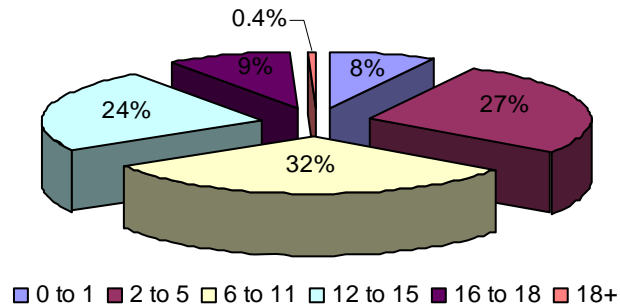
Of the 709 children with a permanency goal of adoption during the quarter, 56 percent were white, 28 percent were black and 4 percent were Hispanic. These numbers were similar to the previous quarter.

Chart 29a: Ethnicity of Children with a Permanency Goal of Adoption During the Quarter



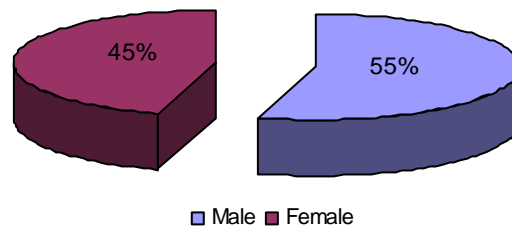
Children between the ages of 6 and 11 (32%) represented the largest group of children with a permanency goal of adoption. The percentage breakdown was similar to the previous quarter.

Chart 29b: Ages of Children with a Permanency Goal of Adoption During the Quarter



Of the 709 children with a permanency goal of adoption, 55 percent were male and 45 percent were female. These percentages were similar to the previous quarter.

Chart 29c: Gender of Children with a Permanency Goal of Adoption During the Quarter



Characteristics of Children with a Permanency Goal of Adoption at the End of the Quarter

There were 656 children with a permanency goal of adoption at the end of the quarter. The table below outlines those children’s characteristics.

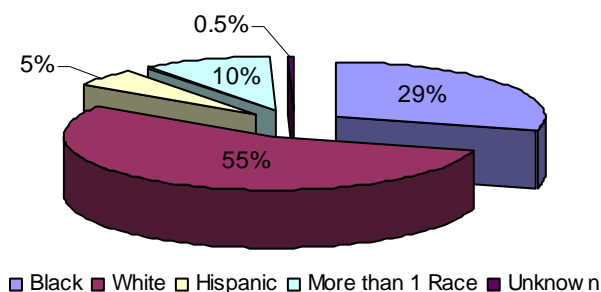
**Table 20: Characteristics of Children with a Permanency Goal of Adoption at the End of the Quarter
4th Quarter SFY 2007**

| Age | Gender | White | Black | Asian | AIAN | NAPI | Hispanic | More Than 1 Race | Total |
|--------------|--------|------------|------------|----------|----------|----------|-----------|------------------|------------|
| 0 to 1 | Female | 15 | 10 | 0 | 0 | 0 | 0 | 2 | 27 |
| | Male | 14 | 5 | 0 | 0 | 0 | 1 | 3 | 23 |
| 2 to 5 | Female | 39 | 30 | 0 | 0 | 0 | 1 | 9 | 79 |
| | Male | 49 | 24 | 0 | 0 | 0 | 5 | 12 | 90 |
| 6 to 11 | Female | 48 | 25 | 0 | 0 | 0 | 7 | 10 | 90 |
| | Male | 68 | 30 | 0 | 0 | 0 | 11 | 7 | 116 |
| 12 to 15 | Female | 35 | 18 | 0 | 1 | 0 | 1 | 10 | 65 |
| | Male | 54 | 29 | 0 | 0 | 0 | 5 | 9 | 97 |
| 16 to 18 | Female | 21 | 6 | 0 | 0 | 0 | 0 | 2 | 29 |
| | Male | 18 | 14 | 0 | 0 | 0 | 0 | 2 | 34 |
| Over 18 | Female | 1 | 0 | 0 | 0 | 0 | 0 | 1 | 2 |
| | Male | 0 | 1 | 0 | 0 | 0 | 0 | 0 | 1 |
| Total | | 362 | 192 | 0 | 1 | 0 | 31 | 67 | 653 |

*Demographic data had not been entered into CHRIS for three children.

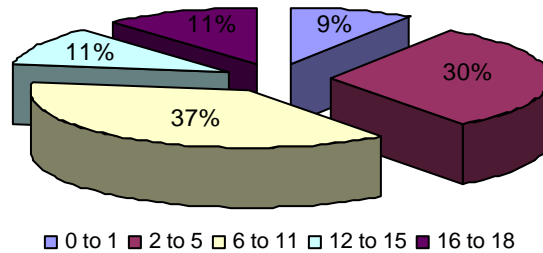
Of the 656 children with a permanency goal of adoption at the end of the quarter, 55 percent were white, 29 percent were black and 10 percent were of more than one race. These percentages were similar to the previous quarter.

Chart 30a: Ethnicity of Children with a Permanency Goal of Adoption at the End of the Quarter



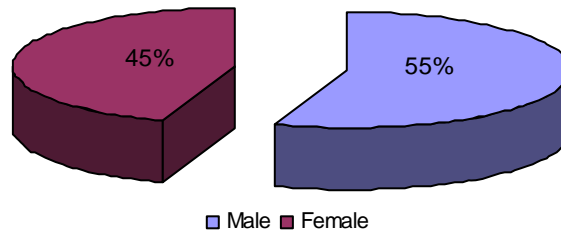
At the end of the quarter, children between the ages of 6 and 11 (37%) continued to represent the largest age group with a permanency goal of adoption, and children between the ages of 2 and 5 (30%) represented the second largest group.

Chart 30b: Ages of Children with a Permanency Goal of Adoption at the End of the Quarter



More male children (55%) than female children (45%) set a permanency goal of adoption at the end of the third quarter, similar to the previous quarter.

Chart 30c: Gender of Children with a Permanency Goal of Adoption at the End of the Quarter



Characteristics of Children whose Parents have had Parental Rights Terminated During the Quarter

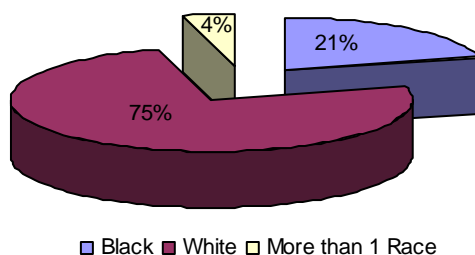
There were 48 children whose parents had their parental rights terminated during the fourth quarter. The table below outlines the characteristics of those children.

**Table 21: Characteristics of Children whose Parents have had Parental Rights Terminated During the Quarter
4th Quarter SFY 2007**

| Age | Gender | White | Black | Asian | AIAN | NAPI | Hispanic | More Than 1 Race | Total |
|--------------|--------|-----------|-----------|----------|----------|----------|----------|------------------|-----------|
| 0 to 1 | Female | 5 | 3 | 0 | 0 | 0 | 0 | 1 | 9 |
| | Male | 4 | 0 | 0 | 0 | 0 | 0 | 0 | 4 |
| 2 to 5 | Female | 9 | 3 | 0 | 0 | 0 | 0 | 0 | 12 |
| | Male | 5 | 2 | 0 | 0 | 0 | 0 | 0 | 7 |
| 6 to 11 | Female | 5 | 0 | 0 | 0 | 0 | 0 | 0 | 5 |
| | Male | 4 | 2 | 0 | 0 | 0 | 0 | 0 | 6 |
| 12 to 15 | Female | 1 | 0 | 0 | 0 | 0 | 0 | 1 | 2 |
| | Male | 2 | 0 | 0 | 0 | 0 | 0 | 0 | 2 |
| 16 to 18 | Female | 0 | 0 | 0 | 0 | 0 | 0 | 0 | 0 |
| | Male | 1 | 0 | 0 | 0 | 0 | 0 | 0 | 1 |
| Total | | 36 | 10 | 0 | 0 | 0 | 0 | 2 | 48 |

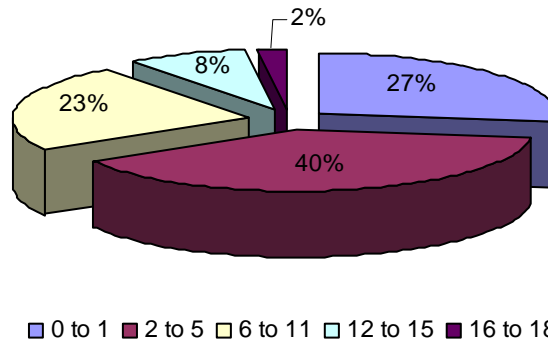
During the quarter, 75 percent of the children whose parents had their parental rights terminated during the quarter were white, 21 percent were black and four percent were of more than one race.

Chart 31a: Ethnicity of Children whose Parents have had Parental Rights Terminated



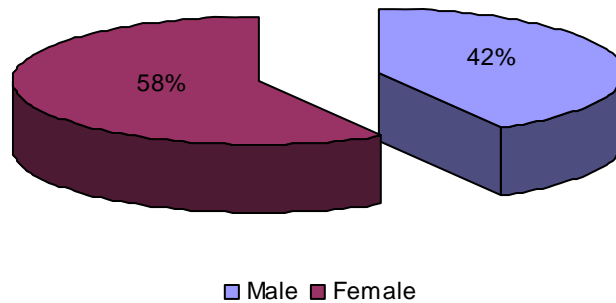
Children between the ages of 2 and 5 (40%) represented the largest group of children whose parents terminated their parental rights during the quarter.

Chart 31b: Ages of Children whose Parents have had Parental Rights Terminated



During the quarter, more female children (58%) than male children (42%) had parents who terminated their parental rights.

Chart 31c: Gender of Children whose Parents have had Parental Rights Terminated



Characteristics of Children Available for Adoption at the End of the Quarter

At the end of the fourth quarter, 370 children were available for adoption, an increase from the previous quarter (369). Demographic information for children available for adoption, shown in the table below, was very similar to previous quarters.

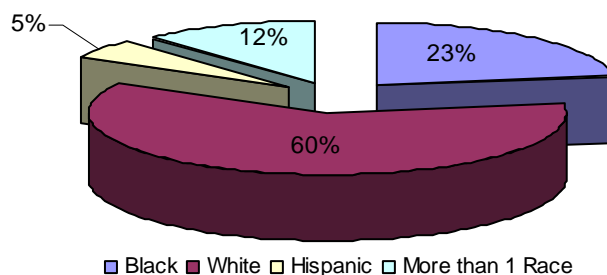
**Table 22: Characteristics of Children Available for Adoption at the End of the Quarter
4th Quarter SFY 2007**

| Age | Gender | White | Black | Asian | AIAN | NAPI | Hispanic | More Than 1 Race | Total |
|--------------|--------|------------|-----------|----------|----------|----------|-----------|------------------|------------|
| 0 to 1 | Female | 4 | 5 | 0 | 0 | 0 | 0 | 0 | 9 |
| | Male | 4 | 1 | 0 | 0 | 0 | 1 | 2 | 8 |
| 2 to 5 | Female | 26 | 5 | 0 | 0 | 0 | 0 | 5 | 36 |
| | Male | 29 | 13 | 0 | 0 | 0 | 3 | 7 | 52 |
| 6 to 11 | Female | 25 | 14 | 0 | 0 | 0 | 5 | 7 | 51 |
| | Male | 46 | 12 | 0 | 0 | 0 | 6 | 6 | 70 |
| 12 to 15 | Female | 25 | 12 | 0 | 1 | 0 | 0 | 8 | 46 |
| | Male | 39 | 13 | 0 | 0 | 0 | 3 | 5 | 60 |
| 16 to 18 | Female | 12 | 4 | 0 | 0 | 0 | 0 | 2 | 18 |
| | Male | 12 | 5 | 0 | 0 | 0 | 0 | 2 | 19 |
| Total | | 222 | 84 | 0 | 1 | 0 | 18 | 44 | 369 |

*Demographic data had not been entered into CHRIS for one child.

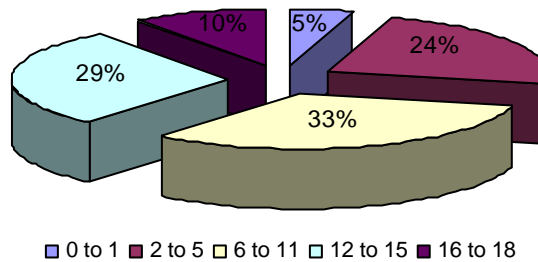
Of the children available for adoption, 60 percent were white and 23 percent were black. These percentages were similar to the previous quarter.

Chart 32a: Ethnicity of Children Available for Adoption at the End of the Quarter



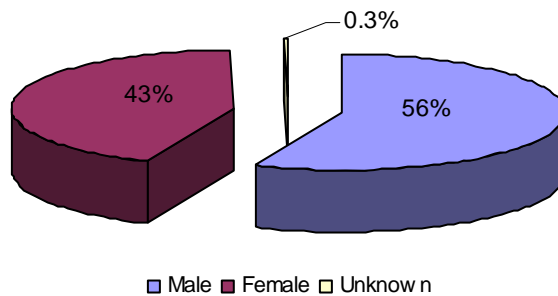
At the end of the quarter, more children between the ages of 6 and 11 (33%) were available for adoption than any other age group.

Chart 32b: Ages of Children Available for Adoption at the End of the Quarter



At the end of the quarter, more male children (56%) than female children (43%) were available for adoption. These percentages were similar to the third quarter.

Chart 32c: Gender of Children Available for Adoption at the End of the Quarter



Current Placements of Children Available for Adoption

At the end of the fourth quarter, more children who were available for adoption were placed in DCFS foster homes (51%) than in any other type of placement, followed by therapeutic foster homes (14%). These results were similar to the previous quarter.

**Table 23: Current Placements of Children Available for Adoption
4th Quarter SFY 2007**

| Placement | Number of Children | Percentage |
|-----------------------------------|--------------------|-------------|
| DCFS Foster Home | 190 | 51% |
| Pre-Adoptive Home | 45 | 12% |
| Pre-Adoptive Home (Foster Parent) | 3 | .8% |
| Therapeutic Foster Home | 53 | 14% |
| Acute CRT | 2 | .5% |
| Residential Facility | 39 | 11% |
| Hospital/Medical | 7 | 2% |
| Emergency Shelter | 2 | .5% |
| Youth Services | 5 | 1.4% |
| Independent Living | 3 | .8% |
| Temporary Placement | 1 | .3% |
| Sub-Acute CRT | 16 | 4% |
| ASAP CRT | 1 | .3% |
| Kinship Care | 3 | .8% |
| Total* | 370 | 100% |

*The sum of individual percentages may not equal 100% due to rounding.

Characteristics of Children in Pre-adoptive Placements

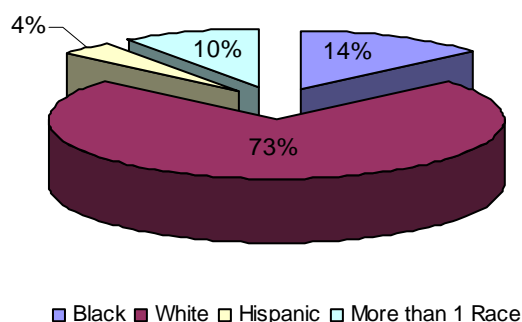
During the fourth quarter, 73 children were placed in pre-adoptive homes. This number includes children who could have entered pre-adoptive homes during a previous quarter as well as children who were placed in pre-adoptive homes during the current quarter.

**Table 24: Characteristics of Children in Pre-adoptive Placements
4th Quarter SFY 2007**

| Age | Gender | White | Black | Asian | AIAN | NAPI | Hispanic | More Than 1 Race | Total |
|--------------|--------|-----------|-----------|----------|----------|----------|----------|------------------|-----------|
| 0 to 1 | Female | 1 | 0 | 0 | 0 | 0 | 0 | 0 | 1 |
| | Male | 2 | 1 | 0 | 0 | 0 | 0 | 1 | 4 |
| 2 to 5 | Female | 17 | 1 | 0 | 0 | 0 | 0 | 1 | 19 |
| | Male | 7 | 4 | 0 | 0 | 0 | 0 | 0 | 11 |
| 6 to 11 | Female | 5 | 2 | 0 | 0 | 0 | 2 | 2 | 11 |
| | Male | 15 | 1 | 0 | 0 | 0 | 0 | 0 | 16 |
| 12 to 15 | Female | 2 | 0 | 0 | 0 | 0 | 0 | 2 | 4 |
| | Male | 3 | 1 | 0 | 0 | 0 | 1 | 0 | 5 |
| 16 to 18 | Female | 1 | 0 | 0 | 0 | 0 | 0 | 1 | 2 |
| | Male | 0 | 0 | 0 | 0 | 0 | 0 | 0 | 0 |
| Total | | 53 | 10 | 0 | 0 | 0 | 3 | 7 | 73 |

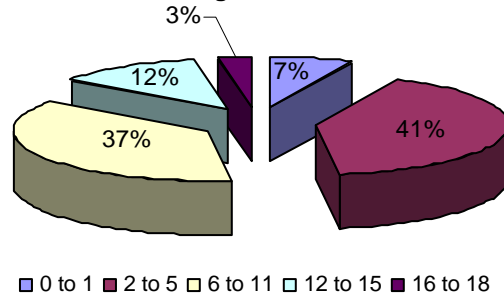
Of the 73 children in pre-adoptive homes during the quarter, 73 percent were white and 14 percent were black. During the previous quarter, 62 percent were white and 17 percent were black.

Chart 33a: Ethnicity of Children Placed in Pre-adoptive Homes During the Quarter



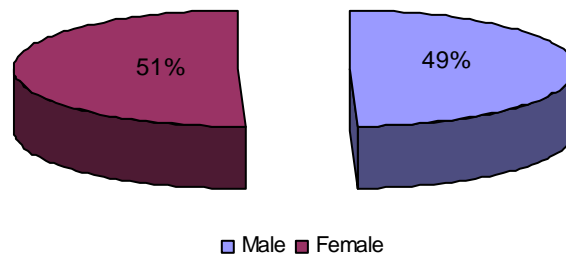
Children between the ages of 2 and 5 (41%) represented the largest group of children placed in pre-adoptive homes. The smallest percentage of children in pre-adoptive placements was children between the ages of 16 and 18 (3%).

33b: Ages of Children Placed in Pre-adoptive Homes During the Quarter



Of the 73 children placed in pre-adoptive homes during the quarter, 49 percent were male and 51 percent were female. These percentages were similar to the previous quarter.

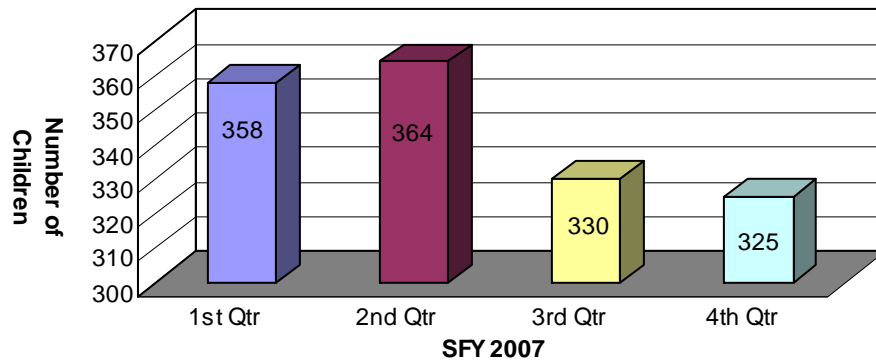
33c: Gender of Children Placed in Pre-adoptive Homes During the Quarter



Children not Placed in Adoptive Homes whose Parents have had their Parental Rights Terminated

During the fourth quarter, there were 325 children whose parents had their parental rights terminated but were not placed in adoptive homes, a decrease from the previous quarter (330). This statistic was derived by subtracting the number of children placed in adoptive homes at the end of the quarter (45) from the number of children available for adoption at the end of the quarter (370).

Chart 34: Children not Placed in Adoptive Homes whose Parents have had their Parental Rights Terminated



Children with Special Needs

During the fourth quarter, 43 children with special needs were in pre-adoptive placements¹⁴. Children with special needs are defined as children who have severe medical or psychological needs that require ongoing treatment. Children at high risk for the development of serious physical, mental or emotional conditions may be considered special needs if documentation is provided by a medical professional specializing in the area of the condition for which the child is considered at risk. Other children may be considered special needs if they are Caucasian children over the age of nine, African American children at age two years or older; or children who are members of a sibling group of three or more who are to be placed together.

**Table 25: Children with Special Needs who were Placed in Adoptive Homes
4th Quarter SFY 2007**

| Special Needs Condition | Number of Children |
|-------------------------|--------------------|
| Race | 43 |
| Age | 41 |
| Member of sibling group | 26 |

Characteristics of Children with Finalized Adoptions

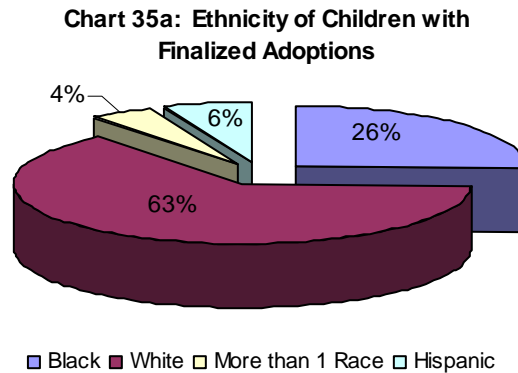
During the quarter, 94 children had their adoptions finalized, an increase from the previous quarter (77). The following table outlines the characteristics of the children with finalized adoptions.

**Table 26: Characteristics of Children with Finalized Adoptions
4th Quarter SFY 2007**

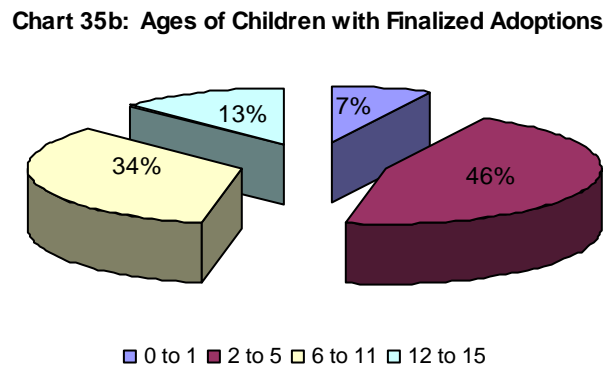
| Age | Gender | White | Black | Asian | AIAN | NAPI | Hispanic | More Than 1 Race | Total |
|--------------|--------|-----------|-----------|----------|----------|----------|----------|------------------|-----------|
| 0 to 1 | Female | 2 | 2 | 0 | 0 | 0 | 0 | 1 | 5 |
| | Male | 1 | 1 | 0 | 0 | 0 | 0 | 0 | 2 |
| 2 to 5 | Female | 15 | 6 | 0 | 0 | 0 | 2 | 1 | 24 |
| | Male | 12 | 4 | 0 | 0 | 0 | 3 | 0 | 19 |
| 6 to 11 | Female | 10 | 3 | 1 | 0 | 0 | 1 | 1 | 16 |
| | Male | 11 | 5 | 0 | 0 | 0 | 0 | 0 | 16 |
| 12 to 15 | Female | 4 | 2 | 0 | 0 | 0 | 0 | 1 | 7 |
| | Male | 4 | 1 | 0 | 0 | 0 | 0 | 0 | 5 |
| 16 to 18 | Female | 0 | 0 | 0 | 0 | 0 | 0 | 0 | 0 |
| | Male | 0 | 0 | 0 | 0 | 0 | 0 | 0 | 0 |
| Total | | 59 | 24 | 1 | 0 | 0 | 6 | 4 | 94 |

¹⁴ This number does not take into account children with severe medical and psychological needs because this data is not available in CHRIS (AR Children’s Reporting and Information System). As enhancements are made to the data system to capture this information, it will be provided in future reports.

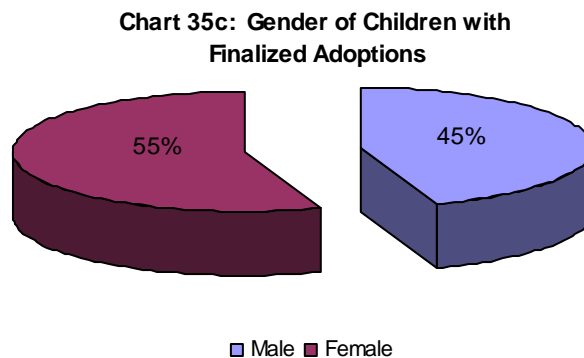
Of the 94 finalized adoptions during the fourth quarter, 63 percent of the adopted children were white and 26 percent were black.



Children between the ages of 2 and 5 represented the largest group of children whose adoptions were finalized during the quarter at 46 percent.



During the quarter, 55 percent of the children whose adoptions were finalized were female and 45 percent were male.



Subsidized Adoptions

During the fourth quarter, 71 children began receiving adoption subsidies. Of those, 66 children received federally-funded subsidies and five received state-funded subsidies.

Characteristics of Children who Received Adoption Subsidies

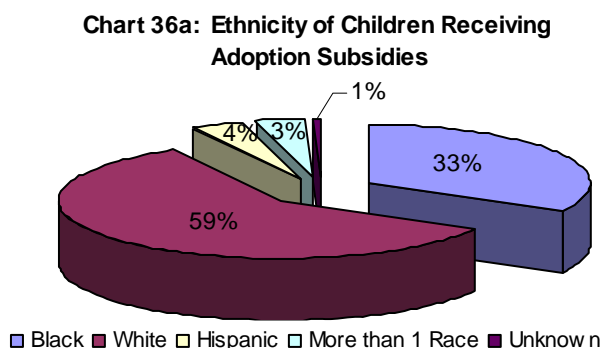
During the fourth quarter, 2,886 children received adoption subsidies. The following table outlines the demographics of those children.

**Table 27: Characteristics of Children Receiving Adoption Subsidies
4th Quarter SFY 2007**

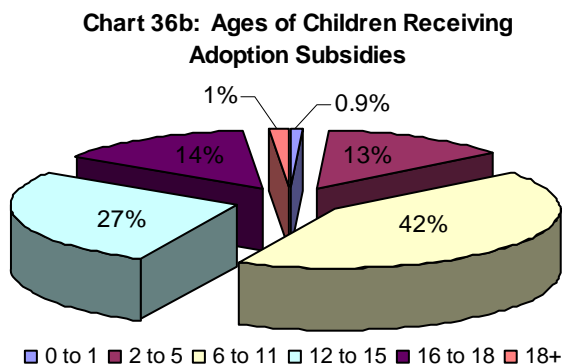
| Age | Gender | White | Black | Asian | AIAN | NAPI | Hispanic | More Than 1 Race | Total |
|---------------|--------|--------------|------------|----------|----------|----------|------------|------------------|--------------|
| 0 to 1 | Female | 10 | 3 | 2 | 0 | 0 | 0 | 2 | 17 |
| | Male | 6 | 3 | 0 | 0 | 0 | 0 | 0 | 9 |
| 2 to 5 | Female | 104 | 46 | 0 | 0 | 0 | 14 | 15 | 179 |
| | Male | 112 | 59 | 2 | 0 | 0 | 20 | 9 | 202 |
| 6 to 11 | Female | 350 | 202 | 2 | 2 | 0 | 32 | 33 | 621 |
| | Male | 362 | 194 | 0 | 0 | 0 | 23 | 23 | 602 |
| 12 to 15 | Female | 230 | 142 | 1 | 0 | 0 | 15 | 6 | 394 |
| | Male | 252 | 135 | 0 | 1 | 0 | 2 | 7 | 397 |
| 16 to 18 | Female | 129 | 61 | 0 | 0 | 0 | 7 | 2 | 199 |
| | Male | 112 | 87 | 0 | 0 | 0 | 5 | 1 | 205 |
| 18+ | Female | 10 | 10 | 0 | 0 | 0 | 0 | 0 | 20 |
| | Male | 15 | 7 | 0 | 0 | 0 | 1 | 0 | 23 |
| Total* | | 1,692 | 949 | 7 | 3 | 0 | 119 | 98 | 2,868 |

*Demographic data had not been entered into CHRIS for 18 children.

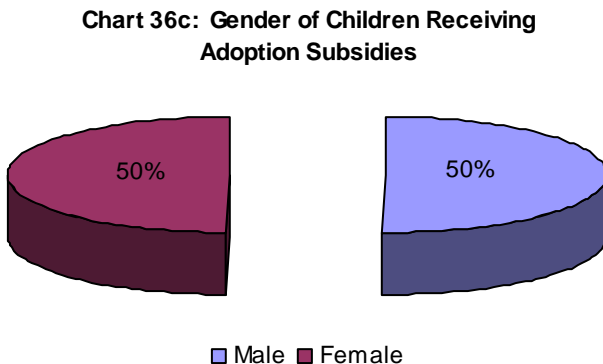
Fifty-nine percent of the children who received adoption subsidies were white and 33 percent were black, similar to the previous quarter.



The majority of the children receiving adoption subsidies during the quarter were between the ages of 6 and 11 (42%).



Of the children receiving adoption subsidies, 50 percent were male and 50 percent were female.



Adoptive Homes

At the beginning of the fourth quarter, 414 adoptive homes were available; at the end of the fourth quarter, 390 adoptive homes were available.

**Table 28: Adoptive Homes
4th Quarter SFY 2007**

| | Total Adoptive Homes | Non-Foster Adoptive Homes | Foster Adoptive Homes |
|--|-----------------------------|----------------------------------|------------------------------|
| Homes available for children at beginning of quarter | 414 | 162 | 252 |
| Newly available homes | 52 | 26 | 26 |
| Homes that had children placed during the quarter | 61 | 28 | 33 |
| Home that experienced a disruption | 2 | 1 | 1 |
| Homes that closed without a placement | 17 | 10 | 7 |
| Homes available at the end of the quarter | 390 | 151 | 239 |