

Quarterly Performance Report

***3rd Quarter
SFY 2007***

(January 2007 – March 2007)

**Arkansas Department of Health and Human Services
Division of Children and Family Services
Quality Assurance Unit**

Hornby Zeller Associates, Inc.

July 2007

A large, bold, white letter 'Q' is centered vertically on a red rectangular background.A large, bold, white letter 'P' is centered vertically on a red rectangular background.A large, bold, white letter 'R' is centered vertically on a red rectangular background.

Table of Contents

Executive Summary	i
Part I: Performance Indicators	1
Percentage of Families with True Allegations of Child Maltreatment Three Months, Six Months and One Year after a Previous True Report	2
Percentage of Foster Families with True Reports of Maltreatment.....	2
Percentage of Children Receiving Supportive Services, Protective Services or Intensive Family Services (IFS) who were Abused or Neglected within One Year of the Initiation of Services.....	3
Percentage of Children Receiving Supportive Services, Protective Services or Intensive Family Services (IFS) who Entered Foster Care Within One Year of the Initiation of Services	4
Percentage of Children in Foster Care who Returned Home within Eighteen Months	4
Percentage of Children in Foster Care who have Experienced Three or more Placements within the Past Eighteen Months.....	5
Percentage of Siblings in Placement who are Placed Together	6
Percentage of Children Living with Adoptive Families within Twelve Months of the Termination of Parental Rights	7
Number of Children Placed in Pre-adoptive Homes whose Adoptions were Finalized within Twelve Months of Entering Pre-adoptive Placements	7
Part II: Compliance Index	8
Timely Initiation of Child Maltreatment Assessments	9
Timely Completion of Child Maltreatment Assessments.....	10
24- and 72-Hour Initial Health Screenings for Children Entering Foster Care	11
Comprehensive Health Assessments.....	12
Foster Home Recruitment	13
Foster Home Re-evaluations	13
Required Visits Made by Worker	14
Part III: Description of Population and Services	15
Section I: True Child Maltreatment Reports	16
Child Maltreatment Assessments.....	16
Characteristics of Children in True Maltreatment Reports.....	18
Section II: Foster Care	21
Characteristics of Children in Foster Care.....	21
Entries into Foster Care	25
Exits from Foster Care	29
Permanency Goals of Children in Foster Care.....	32
Length of Stay of Children in Foster Care	33
Number of Placements of Children in Foster Care.....	34
Characteristics of Children who Experienced Two or More Placements ..	35

Quarterly Performance Report – Table of Contents

Current Placement of Children in Foster Care	37
Characteristics of Children on Runaway Status at the End of the Quarter.....	38
Characteristics of Children in Relative Care.....	40
Section III: Adoption.....	42
Characteristics of Children with a Permanency Goal of Adoption During the Quarter.....	42
Characteristics of Children with a Permanency Goal of Adoption at the End of the Quarter	45
Characteristics of Children whose Parents have had Parental Rights Terminated During the Quarter	47
Characteristics of Children Available for Adoption at the End of the Quarter.....	49
Current Placements of Children Available for Adoption	51
Characteristics of Children in Pre-adoptive Placements	52
Children not Placed in Adoptive Homes whose Parents have had their Parental Rights Terminated	54
Children with Special Needs	55
Characteristics of Children with Finalized Adoptions.....	55
Subsidized Adoptions.....	57
Characteristics of Children who Received Adoption Subsidies	57
Adoptive Homes.....	58

EXECUTIVE SUMMARY

The Quarterly Performance Report (QPR) is distributed to Division of Children and Family Services' (DCFS) managers and legislative committees dealing with children and youth. The QPR for the third quarter of State Fiscal Year (SFY) 2007, specifically January through March 2007, consists of three parts:

1. **Performance Indicators**, which provide information on service outcomes, such as:
 - a. *Percentage of Families with True Allegations of Child Maltreatment Three Months, Six Months and One Year after a Previous True Report*
 - b. *Percentage of Siblings in Placement who are Placed Together*
 - c. *Percentage of Children Living with Adoptive Families within Twelve Months of the Termination of Parental Rights*

2. **Compliance Index**, which reports on the Division's compliance with requirements set by DCFS with guidance from the Arkansas legislative children and youth committees, such as:
 - a. *Timely Completion of Child Maltreatment Assessments*
 - b. *24- and 72-Hour Initial Health Screenings for Children Entering Foster Care*
 - c. *Foster Home Recruitment*

3. **Description of Population and Services**, which describes the children who were the subjects of maltreatment reports; were served in foster care; and were provided adoption services, such as:
 - a. *Permanency Goals of Children in Foster Care*
 - b. *Characteristics of Children in Pre-Adoptive Homes*

The QPR provides this information on a quarterly basis, showing trends over time. The report provides the agency with information on the populations it serves and on pertinent issues so the agency can improve performance and better target its efforts.

Part I: Performance Indicators

DCFS has established nine performance indicators to measure its progress with regard to its major goals of child safety, permanency and well-being. During the third quarter, DCFS continued its efforts toward meeting these goals. Overall, DCFS maintained a performance standard that mirrors past efforts and successes.

For the third quarter, there were three noteworthy areas, as shown below:

- Percentage of Children Receiving Protective Services Who Entered Foster Care Within One Year of the Initiation of Services

The percentage of children receiving protective services increased to **12 percent**, three percentage points higher than the previous quarter. This service has continued to grow over the past year. This increases the demands on the foster care system (e.g., foster homes and other placements, worker time in court). It may also indicate that with high caseloads some workers do not think that they can visit the family's home frequently enough to assure safety, so removal becomes the option of choice. The Division is attempting to lower caseloads and assure the availability of other services to assist in maintaining families where appropriate.

- Percentage of Siblings in Placement Who Are Placed Together

The percentage of siblings placed together has steadily decreased over the last year. This is probably due to the lack of available foster homes. See the corrective action below for Foster Home Recruitment for specifics on how the Division plans to address this issue.

- Percentage of Children Living with Adoptive Families within Twelve Months of the Termination of Parental Rights

This percentage has continued to decrease over the last year. The Division is planning several efforts to address this issue including centralized placement and tracking of children awaiting adoption.

Part II: Compliance Index

DCFS has set compliance measures with guidance from the House Committees on Aging, Children and Youth, Legislative and Military Affairs and the Senate Interim Committee on Children and Youth. An index is compiled by reporting the level of compliance with these measures.

For the third quarter, the QPR addresses six noteworthy areas, as shown below:

- **Timely Initiation of Child Maltreatment Assessments**

The percentage for timely initiations stood at **85 percent**, three percentage points higher than the previous quarter and below the goal of 95 percent.

Six areas improved compliance for Priority One initiations and five areas improved compliance with Priority Two initiations. Although compliance fell below the goal of 95 percent, areas have established corrective actions to help remedy the barriers that exist.

Staff shortages impacted compliance in some areas, specifically Area 1. Additional staff has been hired in many areas, but they are currently in training or have just completed training.

In Area 7, a time frame of when certain measures are to be executed will be put into place to ensure improvement in timely initiation. This will include assignment of investigations on the same day or next business day, if received on the weekend and reporting to the Area Manager those not completed by the 25th day.

- **Timely Completion of Child Maltreatment Assessments**

The percentage for timely completions stood at **58 percent**, six percentage points higher than the previous quarter and below the goal of 90 percent.

Eight areas increased compliance with Priority One investigations and seven increased compliance with Priority Two investigation completions. Areas 3 and 9 have experienced staff shortages or significant turnover; and Areas 4, 5 and 6 anticipate that newly hired staff will continue to improve timely completions.

- **24-Hour and 72-Hour Initial Health Screenings (IHS) for Children Entering Foster Care**

The percentage for 24-hour initial health screenings stood at **81 percent**, 10 percentage points higher than the previous quarter but still below the goal of 95 percent.

The percentage for 72-hour initial health screenings stood at **80 percent**, one percentage point higher than the previous quarter and but still below the goal of 95 percent.

For the 24-hour screenings, three areas exceeded the 95 percent goal with 100 percent compliance, and two additional areas had a compliance rate that exceeded 80 percent.

For the 72-hour screenings, two areas met or exceeded the 95 percent goal, and four additional areas had a compliance rate that exceeded 80 percent.

Barriers to health screenings for children entering care include scheduling problems and a lack of providers, in particular providers accepting new Medicaid patients.

Most areas have established corrective actions to help alleviate these problems. Areas 3 and 5 have either hired a new health service worker or intend to hire a new health service worker. Area 9 acknowledges the need for training on the differences between 24-hour and 72-hour health screenings for children entering care. Additionally, Area 10 has recently hired a new RN.

- Comprehensive Health Assessments

The percentage for comprehensive health assessments stood at **47 percent**, seventeen percentage points lower than the previous quarter and below the goal of 95 percent.

All ten areas experienced declining compliance with timely comprehensive assessments from the previous quarter. Arguably the most significant barrier to improving compliance remains the sheer volume of children entering care. In short, more children entered care than staff and providers could accommodate.

As a corrective action, DCFS is working with UAMS to increase the availability of clinics. Certain areas, such as Area 3, intend to hire additional Health Service Workers. Area 4 has made efforts to improve communication between all parties involved and has invited UAMS to the foster parent conference to reiterate the importance of the health assessments.

- Foster Home Recruitment

During the third quarter, DCFS recruited **40** foster homes, compared to **41** during the previous quarter. This is below the goal of 80 new homes per quarter.

Areas have struggled in the past with recruiting new foster homes due to high caseloads. DCFS now has resource workers that hold monthly or bi-

weekly meetings for prospective foster parents to attend in order to receive information about foster parenting. Area 6 has also begun new recruiting efforts at churches and other faith-based organizations—working on a major initiative to recruit and support foster and adoptive homes via these resources, as well as providing support for child welfare staff. This initiative, titled “The C.A.L.L.” (Children of Arkansas Loved for a Lifetime), is a collaboration between the agency and local churches.

- **Required Visits Made by Worker**

During the third quarter, the percentage of children who received a visit decreased from **56 percent** in January to **54 percent** in February, before further decreasing to **49 percent** in March. This is a change from the previous quarter when the percentage of children who received visits for October through December was 62 percent, 56 percent and 48 percent, respectively.

DCFS continues to experience a staffing shortage which has resulted in low compliance with the agency’s worker visitation goal. Nonetheless, six areas experienced an increase in required worker visits over the entire quarter continues to focus on filling vacant positions; 85 percent of positions were filled at the time of the last QPR. This has increased to 90 percent of the positions being filled in April 2007. Even though the percentage of available positions that are filled has increased, the demand on workers is also increasing due to an increase in the number of children and families to be served.

During the previous quarter, DCFS was notified of a federal grant that can be used to increase worker visits with children in foster care and finalizing a plan for use of this grant money.

Part III: Description of Population and Services

The Description of Population and Services section describes the children who were subjects of maltreatment reports; were served in foster care; and were provided with adoption services.

There were no noteworthy areas in this section during the third quarter.

PART I: PERFORMANCE INDICATORS

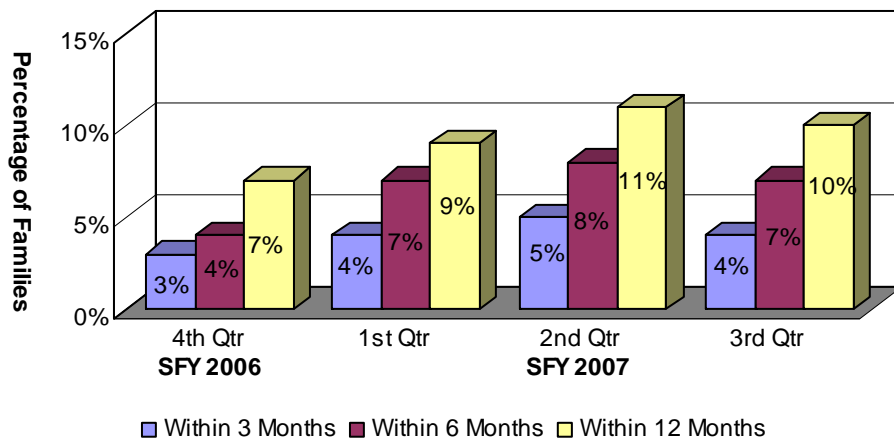
The Division has established nine performance measures to indicate achievement levels regarding its major goals in child safety, family preservation and permanency:

- Percentage of families with true allegations of child maltreatment three months, six months and one year after a previous true report;
- Percentage of foster families with true reports of maltreatment;
- Percentage of children receiving Supportive Services, Protective Services or Intensive Family Services (IFS) who were abused or neglected within one year of the initiation of services;
- Percentage of children receiving Supportive Services, Protective Services or Intensive Family Services (IFS) who entered foster care within one year of the initiation of services;
- Percentage of children in foster care who returned home within eighteen months;
- Percentage of children in foster care who have experienced three or more placements within the past eighteen months;
- Percentage of siblings in placement who are placed together;
- Percentage of children living with adoptive families within twelve months of the termination of parental rights; and
- Number of children placed in pre-adoptive homes whose adoptions were finalized within twelve months of entering pre-adoptive placements.

Percentage of Families with True Allegations of Child Maltreatment Three Months, Six Months and One Year after a Previous True Report

Of the 1,709 families involved in true reports of maltreatment during the third quarter one year ago, only 10 percent (178) had a subsequent true report within 12 months. Fifty-four percent of true reports involved both the same perpetrator and the same type of maltreatment as the initial report¹.

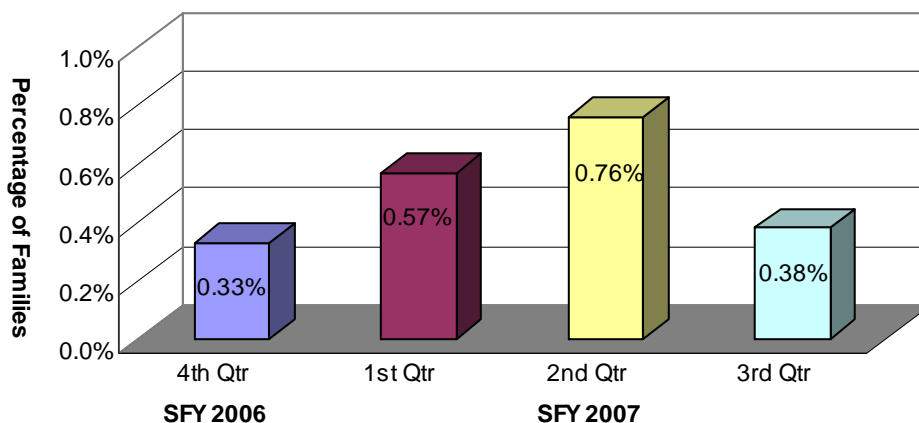
Chart 1: Recurrence of Maltreatment within 12 Months of Initial Report



Percentage of Foster Families with True Reports of Maltreatment

Of the 34 foster home maltreatment reports received during the third quarter, only five were found to be true. Based upon 1,316 active foster homes² during the quarter, the percentage of foster families with true reports of maltreatment was .38 percent.

Chart 2: Percentage of Foster Families with True Reports of Maltreatment



¹ The remaining 46 percent of the subsequent reports were distributed as follows: No repetition of perpetrator or type of abuse – 22.47 percent; Same perpetrator only – 5.62 percent; Same type of abuse only – 17.98 percent.

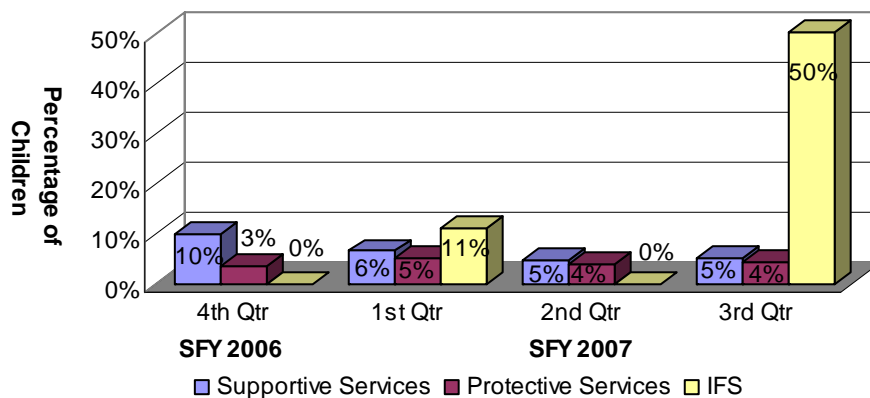
² This includes family and therapeutic foster homes.

Percentage of Children Receiving Supportive Services, Protective Services or Intensive Family Services (IFS) who were Abused or Neglected within One Year of the Initiation of Services

Generally, families receiving Supportive Services have less severe problems. However, families receiving Intensive Family Services (IFS) are, by definition, at imminent risk of having one or more children placed in foster care or already have children in foster care. Families receiving Protective Services generally fall between those two extremes.

Of the 322 children who began receiving Supportive Services between January and March 2006, 16 children (5%) experienced a true report of maltreatment within one year. Of the 3,131 children who began receiving Protective Services, 131 children (4%) were involved in a true report within one year. Of the four children who began receiving IFS services, two children (50%) were involved in a true report within one year.

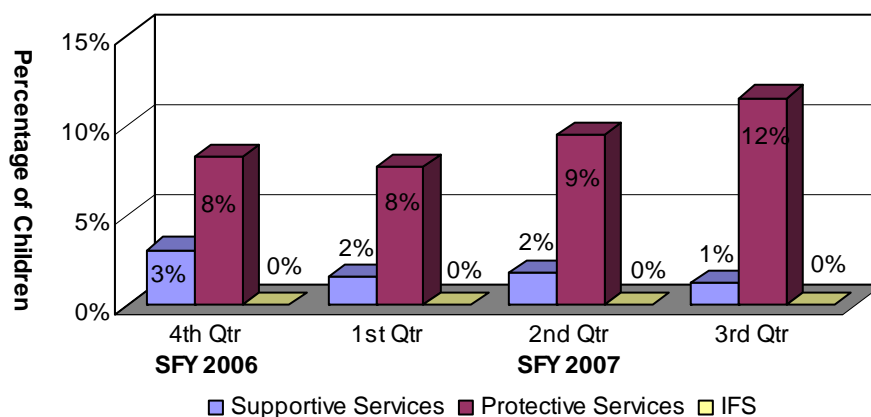
Chart 3: Children Receiving Supportive Services, Protective Services or IFS who were Abused or Neglected within One Year of the Initiation of Services



Percentage of Children Receiving Supportive Services, Protective Services or Intensive Family Services (IFS) who Entered Foster Care within One Year of the Initiation of Services

Four of the 322 children who began receiving Supportive Services; 362 of the 3,131 children who began receiving Protective Services; and none of the four children who began receiving IFS services between January and March 2006 entered foster care within one year of the initiation of these services.

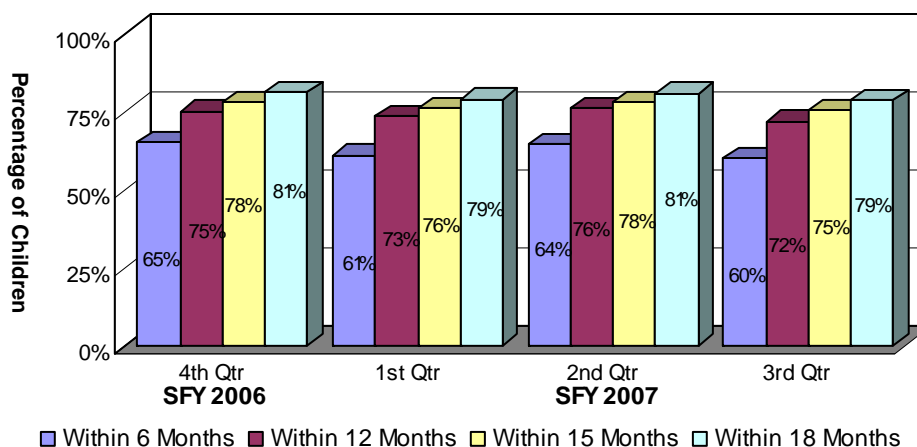
Chart 4: Children Receiving Supportive Services, Protective Services or Intensive Family Services who Entered Foster Care within One Year of the Initiation of Services



Percentage of Children in Foster Care who Returned Home within Eighteen Months

During the quarter 18 months prior to the current quarter, 904 children entered foster care. Of those, 79 percent or 710 children returned home within 18 months.

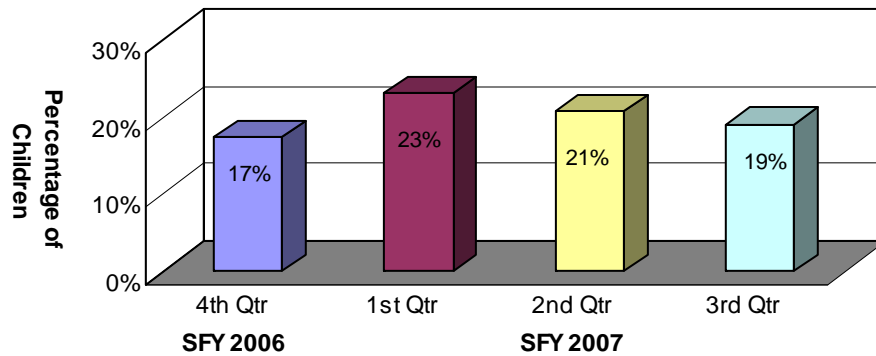
Chart 5: Children in Foster Care who Returned Home within Eighteen Months



Percentage of Children in Foster Care who have Experienced Three or more Placements within the Past Eighteen Months

Of the 944 children who entered foster care during the quarter 18 months prior to the current quarter, 179 children (19%) experienced three or more placements within 18 months. This represents a two percentage point decrease from the previous quarter. Of those same 944 children, 142 (15%) experienced three or more placements within 15 months of entering foster care.

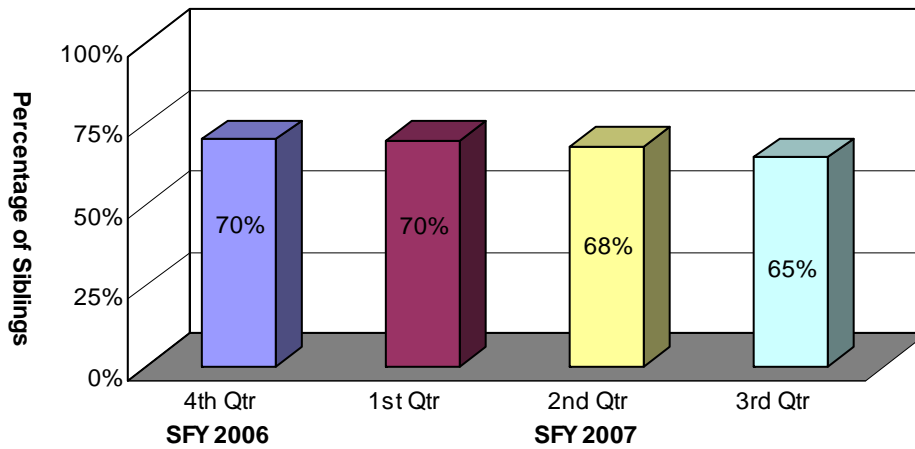
Chart 6: Children in Foster Care who have Experienced Three or More Placements within the Past Eighteen Months



Percentage of Siblings in Placement who are Placed Together

During the third quarter, there were 1,921 children with siblings in foster care. Sixty-five percent of those children (1,240 children) were placed with at least one of their siblings. This was three percentage points lower than the previous quarter (68%) and lower than the same quarter ending one year ago (70%). Of those same 1,921 children, 775 (40%) were placed with all of their siblings, which was lower than the previous quarter. These figures do not exclude children who were placed separately for valid reasons such as safety issues or court orders.

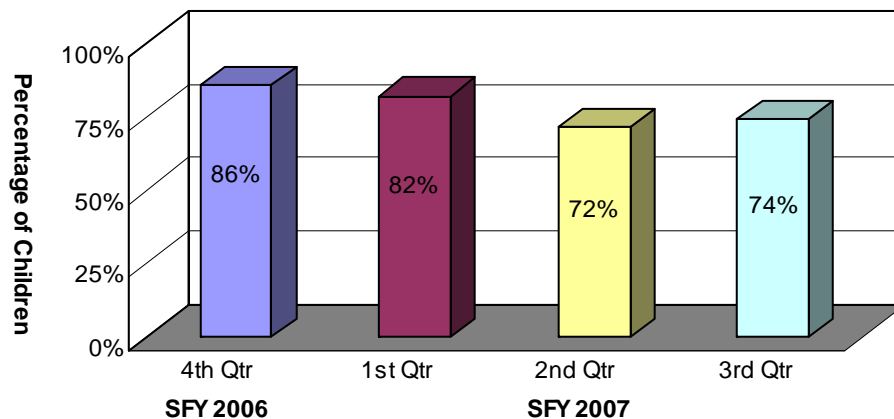
Chart 7: Siblings in Care who are Placed Together



Percentage of Children Living with Adoptive Families within Twelve Months of the Termination of Parental Rights

Of the 77 children whose parents had their parental rights terminated between January and March 2006, 57 children (74%) were placed in adoptive homes within 12 months of the termination of parental rights. This was two percentage points higher than the previous quarter.

Chart 8: Children Living with Adoptive Families within Twelve Months of the Termination of Parental Rights



Number of Children Placed in Pre-adoptive Homes whose Adoptions were Finalized within Twelve Months of Entering Pre-adoptive Placements

Sixty-five children were placed in pre-adoptive homes between January and March 2006. Of those, 46 children (71%) had their adoptions finalized within 12 months of being placed in pre-adoptive homes, higher than the previous quarter and higher than the same quarter one year ago. Eleven children (17%) experienced disruptions, which occur when a child has been placed in a pre-adoptive home and the family or the child decides not to proceed with the adoption and the child subsequently leaves the home. There were 15 children whose adoptions were still pending finalization 12 months after placement in adoptive homes.

**Table 1: Children Placed in Pre-adoptive Homes whose Adoptions were finalized within Twelve Months of Entering Pre-adoptive Placements
3rd Quarter SFY 2007**

Adoption Status	Number of Children
Children Placed in Pre-adoptive Homes	65
Finalized Adoption	46
Disrupted Adoptive Placements	11
Children with a Disruption who were Re-placed in Pre-adoptive Homes	7
Still Pending after Twelve Months	15

PART II: COMPLIANCE INDEX

The Division has set compliance measures with guidance from the Joint Interim Committee on Children and Youth. An index is compiled by reporting the level of compliance in relation to these measures.

Goal Compliance Measure

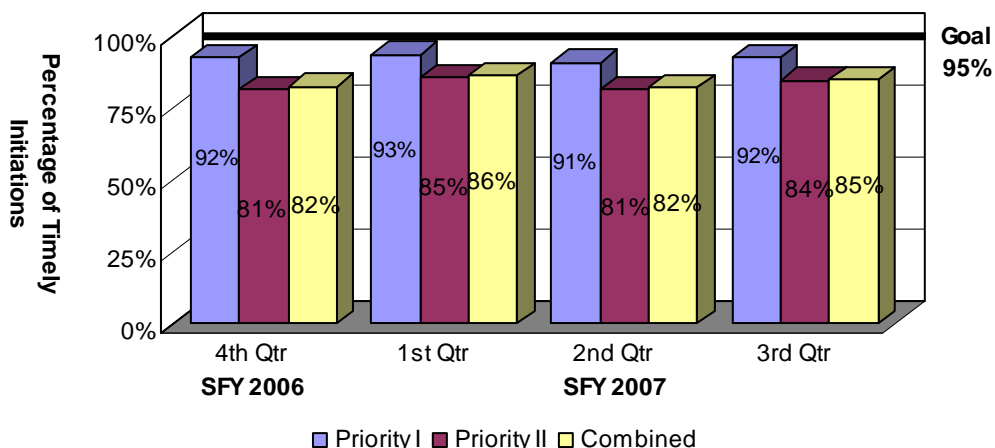
- 95%** ***Timely Initiation of Child Maltreatment Assessments.*** Timely initiation means the investigator interviews or observes the victim child outside the presence of the alleged offender within 24 hours of any report of alleged severe maltreatment or within 72 hours otherwise.
- 90%** ***Timely Completion of Child Maltreatment Assessments.*** Timely completion means a determination must be made regarding an allegation of child maltreatment within 30 days of receipt of the allegation.
- 95%** ***24-Hour Initial Health Screenings.*** This screening is conducted within 24 hours after removal from the home on children who enter foster care due to an allegation of severe maltreatment or if there is evidence of acute illness or injury.
- 95%** ***72-Hour Initial Health Screenings.*** This screening is conducted within 72 hours after removal from the home on all children who enter foster care who are not subject to the 24-hour screening.
- 95%** ***Comprehensive Health Assessments.*** The purpose of this assessment is to evaluate the physical and mental health status of all foster children and is to be completed within 60 days of a child entering foster care.
- 80** ***Foster Home Recruitment.*** DCFS must ensure that a sufficient number and homes variety of foster homes meeting minimal standards and matched to the needs and characteristics of foster children are available. The goal is 80 homes for the quarter or 320 homes for the year.
- 95%** ***Foster Home Re-evaluations.*** DCFS must re-evaluate at least annually each foster home's ability to care for children.
- 85%** ***Required Visits Made by Worker.*** DCFS must provide data on the percentage of monthly visits made by DCFS workers to children in foster care.

Timely Initiation of Child Maltreatment Assessments

Whenever there is an allegation of child maltreatment, the Family Service Worker, the Crimes Against Children Division (CACD) staff member or staff from another local law enforcement agency must interview or observe the victim child outside the presence of the alleged offender within 72 hours of the report (Priority II), unless there is an allegation of severe maltreatment, in which case the interview or observation must occur within 24 hours of the report (Priority I). There were 6,338 referrals for child maltreatment assessments during the third quarter. Of that number, 379 Priority I referrals and 4,517 Priority II referrals were assigned to DCFS for investigation. Of the DCFS Priority I referrals, 349 assessments were initiated within the required 24-hour period. Of the DCFS Priority II referrals, 3,806 assessments were initiated within the required 72-hour period³. The compliance rate for DCFS Priority I initiations was 92 percent and 84 percent for Priority II initiations, which resulted in a combined compliance rate of 85 percent, three percentage points higher than the previous quarter.

As noted previously, the Crimes Against Children Division (CACD) of the Arkansas State Police is also responsible for handling child abuse assessments. CACD was responsible for 1,442 of the 6,338 referrals that came in during the quarter, of which 1,403 were Priority I referrals and 39 were Priority II referrals. Of the Priority I referrals, 1,387 assessments (99%) were initiated in a timely manner. Of the Priority II referrals, 36 assessments (92%) were initiated in a timely manner.

Chart 9: Timely Initiation of Child Maltreatment Assessments

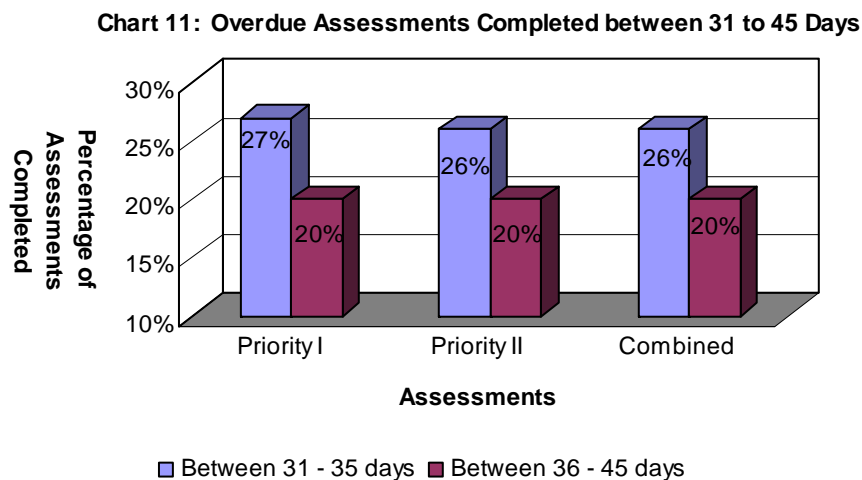
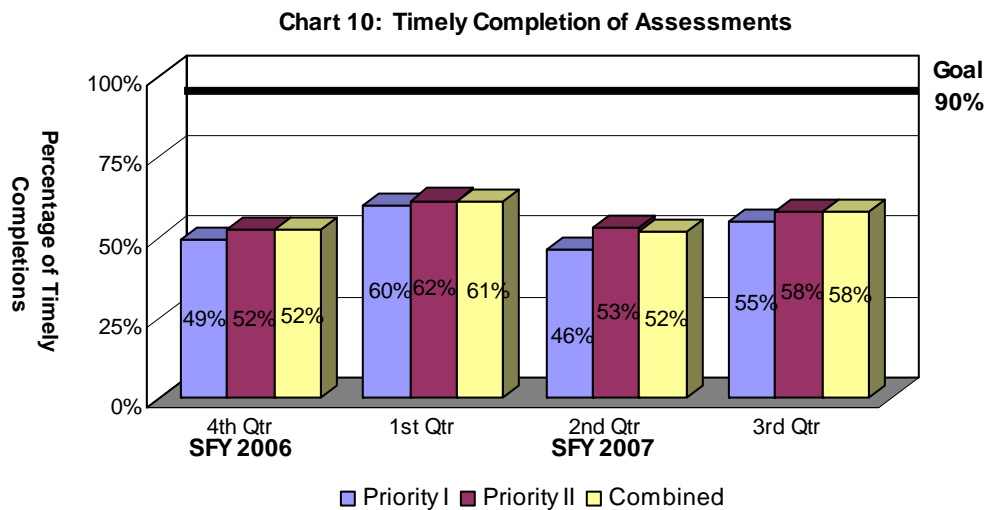


³ DCFS had 349 Priority I referrals and 3,806 Priority II referrals that were initiated in a timely manner. Of those, 66 Priority I (19%) and 1,026 Priority II referrals (27%) were considered compliant due to reasonable diligence. CACD had 1,387 Priority I referrals and 36 Priority II referrals that were initiated in a timely manner. Of those, 223 Priority I (16%) and 9 Priority II (25%) referrals were considered compliant due to reasonable diligence.

Timely Completion of Child Maltreatment Assessments

Of the 379 DCFS Priority I assessments initiated, 209 (55%) were completed within the required 30-day period. Of the 4,517 DCFS Priority II assessments initiated, there were 2,634 (58%) completed within the required 30-day period. Of the total 4,896 assessments assigned to DCFS, there were 2,843 assessments completed in a timely fashion. These completions resulted in a compliance rate of 58 percent, six percentage points higher than the second quarter and still below the goal of 90 percent. (See plan of action in the Executive Summary.)

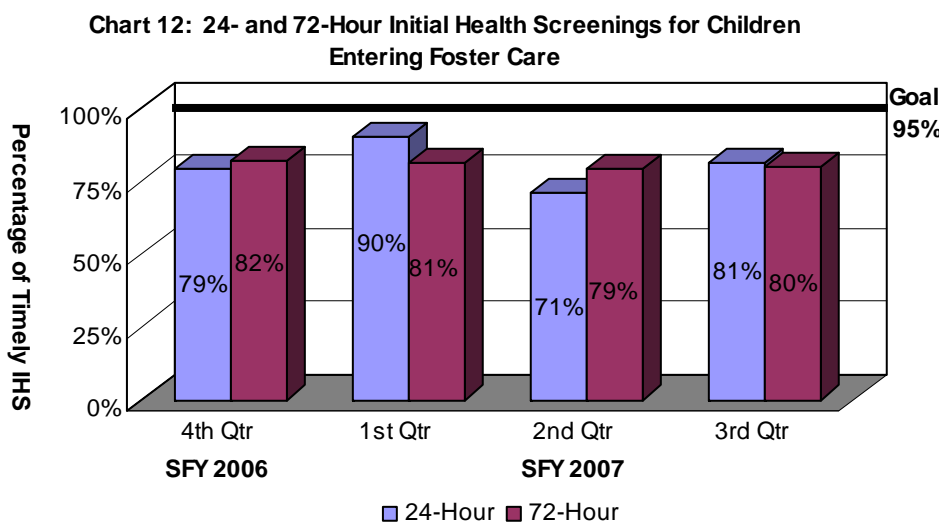
As referenced earlier, the Crimes Against Children Division (CACD) of the Arkansas State Police was responsible for 1,442 of the 6,338 incoming referrals during the quarter. Of that number, 1,403 were Priority I referrals and 39 were Priority II referrals. Of the Priority I assessments, 1,137 (81%) were completed in a timely fashion. Of the Priority II assessments, 29 (74%) were completed in a timely fashion.



24- and 72-Hour Initial Health Screenings for Children Entering Foster Care

When a child enters foster care due to an allegation of severe maltreatment or if there is evidence of acute illness or injury, DCFS must conduct an initial health screening within 24 hours of the child’s removal from the home. Of the 114 children who required the 24-hour health screening during the third quarter, 92 children (81%) received the screening in a timely manner. The compliance rate was 10 percentage points higher than the previous quarter and did not meet the goal of 95 percent.

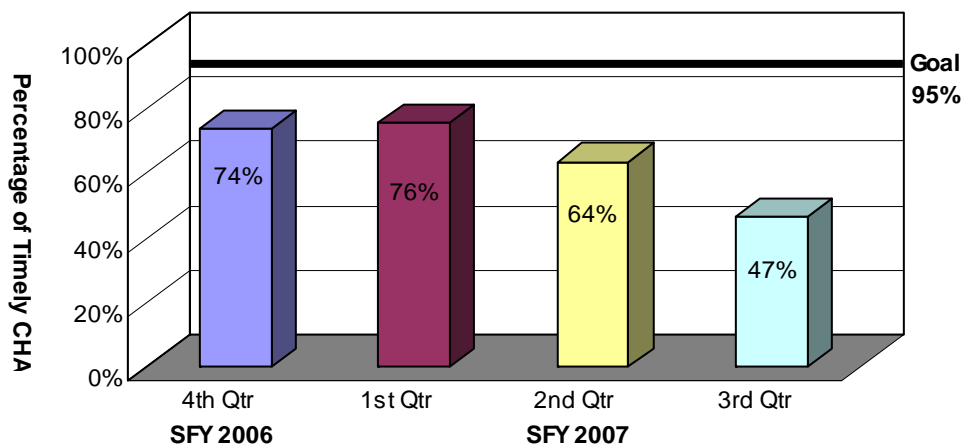
All children entering foster care who do not require the initial 24-hour health screening must still undergo an initial health screening within 72 hours of their removal. Of the 841 children, 671 (80%) received their screenings in a timely manner, which was one percentage point higher than the previous quarter and did not meet the goal of 95 percent. (See plan of action in the Executive Summary.)



Comprehensive Health Assessments

All children entering foster care must receive a comprehensive health assessment that evaluates their physical and mental health status within 60 days of entering foster care. Between November 3, 2006, and January 31, 2007, 478 children entered foster care and remained in care for at least 60 days. Of those children, 223 received their comprehensive health assessment within 60 days after entering care. The resulting compliance rate was 47 percent, seventeen percentage points lower than the previous quarter, and below the goal of 95 percent. (See plan of action in the Executive Summary.)

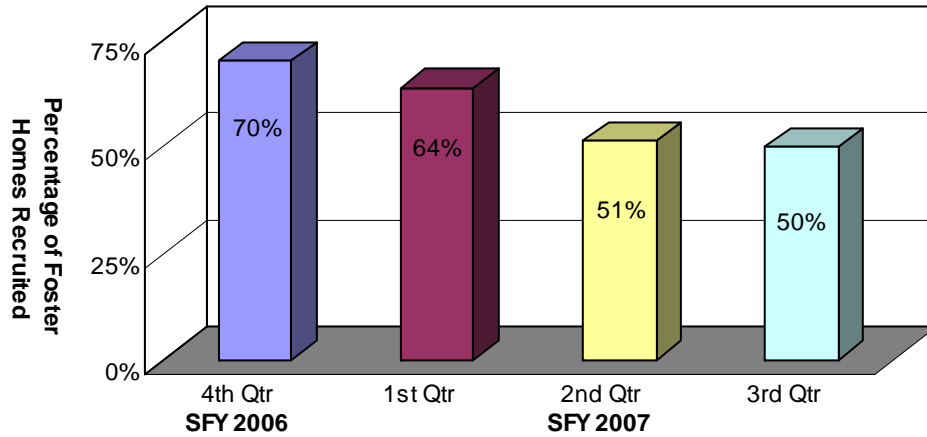
Chart 13: Comprehensive Health Assessments



Foster Home Recruitment

DCFS recruited 40 new foster homes during the third quarter, fewer than the goal of 80 new homes. The 50 percent compliance rate was lower than the previous quarter (51%).

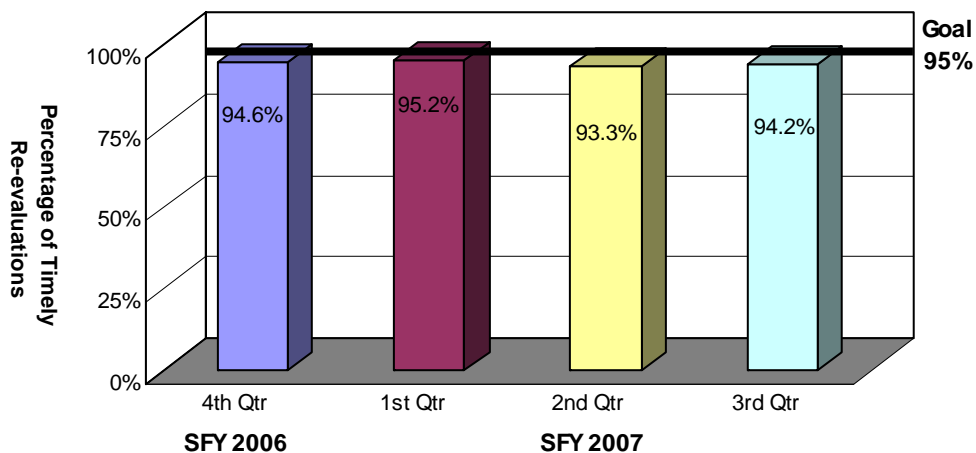
Chart 14: Foster Home Recruitment



Foster Home Re-evaluations

On an annual basis, at a minimum, DCFS conducts required re-evaluations of each foster home's ability to care for children. Of DHHS' 1,015 active foster homes during the third quarter, staff completed current re-evaluations for 956 homes. The resulting 94.2 percent compliance rate was higher than the previous quarter and below the goal of 95 percent compliance.

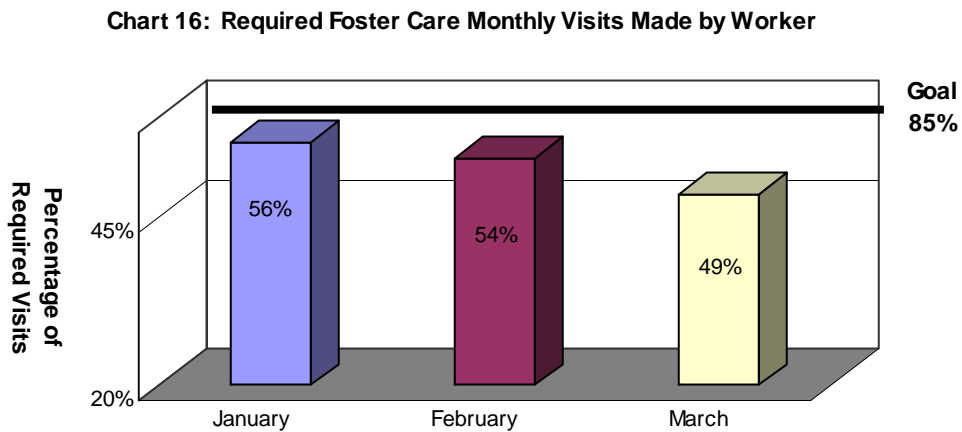
Chart 15: Foster Home Re-evaluations



Required Visits Made by Worker

DCFS acknowledges the importance of worker contact with children in foster care and believes that these visits should be in the home as often as possible. However, DCFS also recognizes that face-to-face visits in other locations can also meet good practice objectives. Consequently, the measurement of required monthly visits with children in care considers face-to-face visits in any setting as compliant.

During the third quarter, the percentage of children who received a visit during the quarter averaged 53 percent from January to March. (See plan of action in the Executive Summary.)



PART III: DESCRIPTION OF POPULATION AND SERVICES

This section describes the number and status of maltreatment assessments; children who were served in foster care; and children who were provided adoption services.

Section I outlines characteristics of children in true maltreatment reports such as age, gender and ethnicity, and specifically compares state ethnicity data to national data. Additionally, this section defines the types of allegations in maltreatment reports.

Section II describes the foster care population. Specifically, it describes the characteristics of children in foster care; entries and exits of children in foster care; reasons children come into care; lengths of stay for children in foster care as well as children in relative care; placements of children in foster care; and the number of placements children experience while in care.

Section III reports adoption data such as the characteristics of children available for adoption; current placement of those children; characteristics of children placed in adoptive homes; children whose parents have terminated their parental rights but have not been placed in adoptive homes; finalized adoptions; and adoption subsidies.

Part III: Description of Population and Services

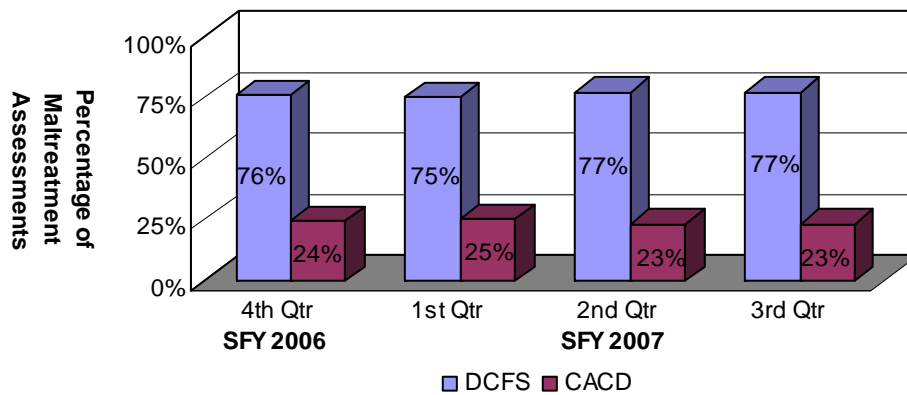
Section I: True Child Maltreatment Reports

Child Maltreatment Assessments

During the third quarter, 6,338 maltreatment assessments were assigned between DCFS and CACD. Of those, 4,896 were assigned to DCFS (77%). This figure represented a decrease in the number of assessments assigned to DCFS from the previous quarter (5,202), and an increase in the number assigned from the same quarter ending one year ago (4,508).

Of those same 6,338 assessments, 1,442 were assigned to CACD (23%). This figure represented a decrease in the number of assessments assigned to CACD from the previous quarter (1,536), and an increase in the number assigned from the same quarter ending one year ago (1,375).

Chart 17a: Child Maltreatment Assessments



Of the 6,338 maltreatment assessments assigned during the third quarter of the SFY 2007, 1,599 reports (25%) were found to be true, which was one percentage point higher than the same quarter one year ago (24%). The national percentage is 26 percent⁴. There were 2,356 victim children involved in the 1,599 true reports during the quarter, which represented an increase in the victim children during the same quarter one year ago (2,054).

Table 2: Child Maltreatment Assessments

	Total Assessments	True Assessments	Percent True
4th Qtr SFY 2006	7,124	1,666	23%
1st Qtr SFY 2007	6,058	1,502	25%
2nd Qtr SFY 2007	6,738	1,595	24%
3rd Qtr SFY 2007	6,338	1,599	25%

⁴ Source: Child Maltreatment 2004, Reports from the States to the National Child Abuse and Neglect Data System, U.S. Department of Health and Human Services, Administration for Children and Families, Administration on Children, Youth and Families, Children's Bureau.

Characteristics of Children in True Maltreatment Reports

As referenced previously, 2,356 victim children were involved in true reports during the third quarter. The table below outlines the demographic information for the victim children during the quarter⁵.

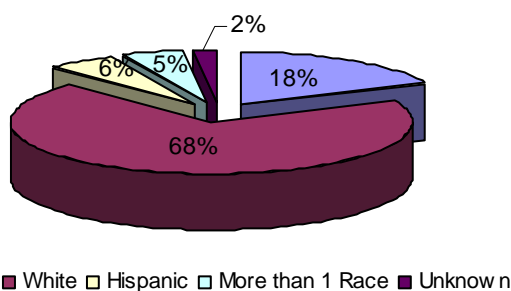
**Table 3: Characteristics of Children in True Maltreatment Reports
3rd Quarter SFY 2007**

Age	Gender	White	Black	Asian	AIAN	NAPI	Hispanic	More Than 1 Race	Total
0 to 1	Female	110	35	1	0	0	8	12	166
	Male	127	36	1	0	0	9	9	182
2 to 5	Female	190	40	1	0	2	8	13	254
	Male	168	41	1	0	1	20	11	242
6 to 11	Female	283	69	2	0	2	23	9	388
	Male	230	78	0	0	2	16	21	347
12 to 15	Female	229	55	0	1	0	29	18	332
	Male	131	30	0	2	0	8	9	180
16 to 18	Female	101	39	0	0	0	12	7	159
	Male	43	8	1	0	0	2	3	57
18+	Female	0	0	0	0	0	0	0	0
	Male	0	1	0	0	0	0	0	1
Total*		1,612	432	7	3	7	135	112	2,308

*Demographic data had not been entered into CHRIS for 48 children.

Of the children involved in true maltreatment reports, 68 percent were white and 18 percent were black.

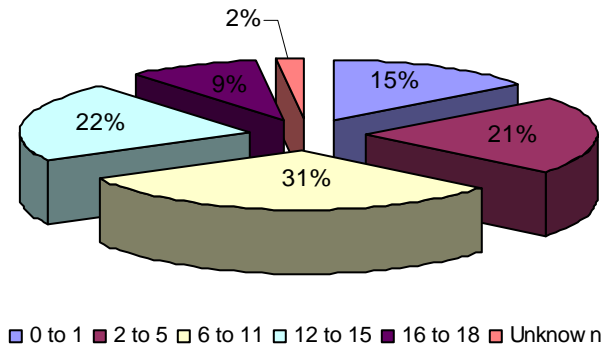
Chart 17a: Ethnicity of Children in True Reports



⁵ Table three, and each subsequent demographic table, divides up “other” races and ethnicities into the following categories: “Hispanic,” “More than One Race,” “Asian” (includes Indonesian, Cambodian, Hmong and Vietnamese), “AIAN” (includes Native American, Alaskan Native and American Indian) and “NAPI” (includes Native Hawaiian and other Pacific Islanders).

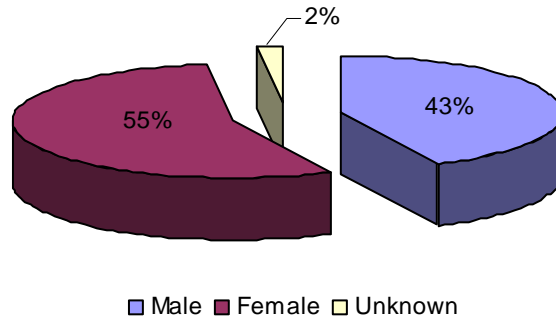
Children between the ages of 6 and 11 represented the largest group of children involved in true maltreatment reports (31%). These percentages were similar to the previous quarter.

Chart 17b: Ages of Children in True Reports



More female children (55%) than male children (43%) were involved in true maltreatment reports. These percentages were also similar to the previous quarter.

Chart 17c: Gender of Children in True Reports



Children Involved in Allegations of True Maltreatment Reports

During the quarter, the majority of the 2,356 children involved in true maltreatment reports were involved in neglect allegations (67%), followed by sexual abuse allegations (23%) and physical abuse allegations (21%)⁶.

**Table 4: Percentage of Children Involved in True Allegations of Maltreatment
2nd Quarter SFY 2007 – 3rd Quarter SFY 2007**

	2nd Quarter		3rd Quarter	
Neglect	1,535	66%	1,588	67%
Physical Abuse	481	21%	491	21%
Sexual Abuse	581	25%	536	23%

⁶ The total number of children represented will outnumber the total children involved in true maltreatment reports because a child can be involved in more than one allegation. Therefore, the sum of percentages of children involved in maltreatment reports will be greater than 100 percent.

Part III: Description of Population and Services

Section II: Foster Care

Characteristics of Children in Foster Care

During the quarter, there were 4,736 children were in foster care. This number includes children who remained in care from previous quarters as well as children who came into care during the quarter. The following table outlines the characteristics of children who were in care during the quarter.

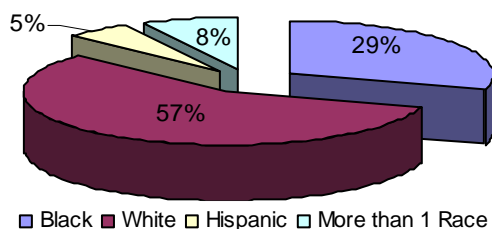
Table 5: Characteristics of Children in Foster Care During the Quarter
3rd Quarter SFY 2007

Age	Gender	White	Black	Asian	AIAN	NAPI	Hispanic	More Than 1 Race	Total
0 to 1	Female	188	92	1	0	1	19	27	328
	Male	183	110	0	1	0	22	22	338
2 to 5	Female	300	155	2	0	0	43	44	544
	Male	333	154	0	3	1	39	50	580
6 to 11	Female	314	155	1	0	0	29	45	544
	Male	362	166	2	2	0	36	43	611
12 to 15	Female	293	139	0	1	0	19	38	490
	Male	247	130	0	1	0	11	45	434
16 to 18	Female	229	110	2	1	0	15	18	375
	Male	164	83	0	0	1	7	16	271
18+	Female	50	43	0	0	0	2	12	107
	Male	47	39	1	0	0	2	4	93
Total*		2,710	1,376	9	9	3	244	364	4,715

*Demographic information had not been entered into CHRIS for 21 children.

The chart below shows that 57 percent of the children in foster care during the quarter were white and 29 percent were black. National data reveal that only 40 percent of the children in the national foster care system were white, while 34 percent of the children were black⁷.

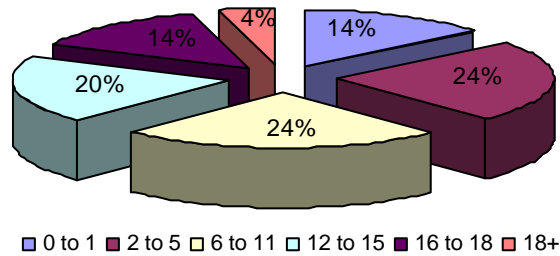
Chart 18a: Ethnicity of Children in Care During the Quarter



⁷ Adoption and Foster Care Analysis and Reporting System (AFCARS) data submitted for children in foster care between 10/01/2003 and 9/30/2004 as of June 2006.

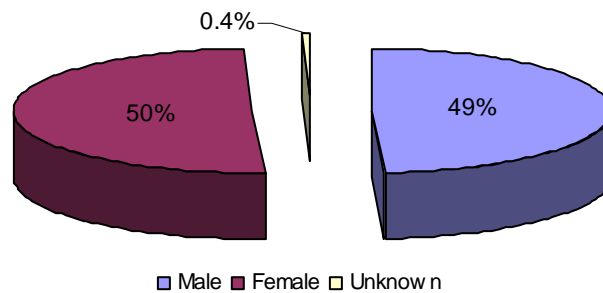
The following chart shows that children between the ages of 6 and 11 represented the largest group of children who were in care during the quarter (24%). These percentages were similar to those of the previous quarter.

Chart 18b: Ages of Children in Foster Care During the Quarter



The following chart shows that 50 percent of the children in foster care during the quarter were female and 49 percent were male. These percentages were also similar to the previous quarter.

Chart 18c: Gender of Children in Foster Care During the Quarter



At the end of the quarter, there were 3,846 children in foster care, an increase from the 3,672 children in care at the end of the second quarter. The following table outlines the characteristics of the children in foster care at the end of the third quarter.

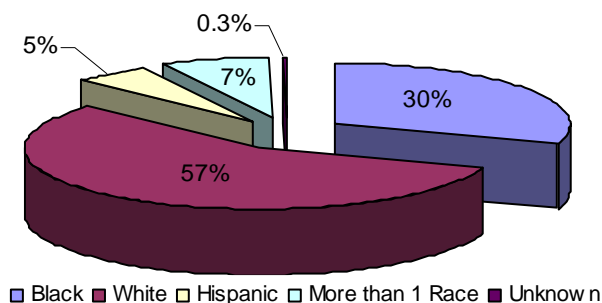
**Table 6: Characteristics of Children in Foster Care at the End of the Quarter
3rd Quarter SFY 2007**

Age	Gender	White	Black	Asian	AIAN	NAPI	Hispanic	More Than 1 Race	Total
0 to 1	Female	140	77	0	0	1	14	17	249
	Male	148	91	0	1	0	20	17	277
2 to 5	Female	244	135	2	0	0	33	32	446
	Male	277	122	0	3	1	32	39	474
6 to 11	Female	235	124	1	0	0	20	37	417
	Male	283	139	1	1	0	33	35	492
12 to 15	Female	238	121	0	1	0	15	32	407
	Male	212	110	0	1	0	8	36	367
16 to 18	Female	184	90	2	0	0	13	17	306
	Male	144	76	0	0	1	7	13	241
18+	Female	36	37	0	0	0	2	9	84
	Male	35	31	1	0	0	2	4	73
Total*		2,176	1,153	7	7	3	199	288	3,833

*Demographic information had not been entered into CHRIS for 13 children.

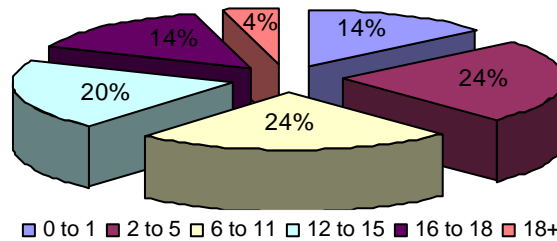
The chart below shows that 57 percent of the children in foster care at the end of the quarter were white, while 30 percent of the children were black. These percentages were consistent with the previous four quarters.

Chart 19a: Ethnicity of Children in Foster Care at the End of the Quarter



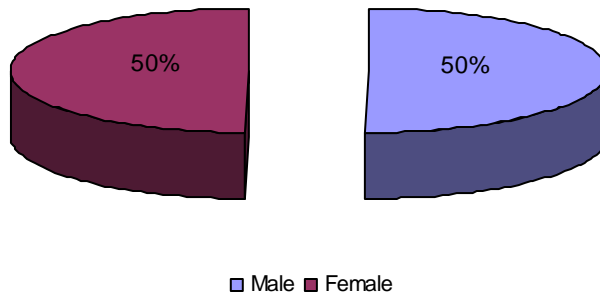
The following chart shows that children between the ages of 2 to 5 and 6 to 11 represented the largest group of children who were in care at the end of the quarter (24%).

Chart 19b: Ages of Children in Foster Care at the End of the Quarter



The following chart shows that 50 percent of the children in foster care at the end of the quarter were female and 50 percent were male. These percentages were also similar to the previous quarter.

Chart 19c: Gender of Children in Foster Care at the End of the Quarter



Entries into Foster Care

The data show that 1,155 children entered foster care during the third quarter, an increase from the second quarter (1,029).

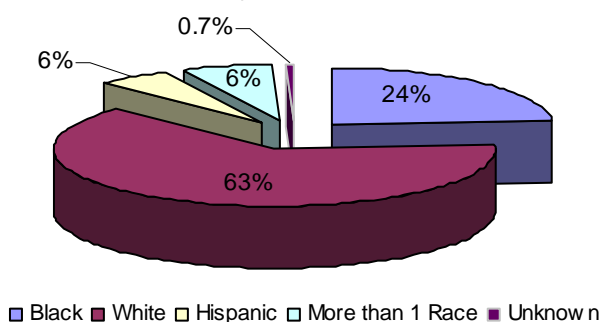
**Table 7: Characteristics of Children Entering Foster Care During the Quarter
3rd Quarter SFY 2007**

Age	Gender	White	Black	Asian	AIAN	NAPI	Hispanic	More Than 1 Race	Total
0 to 1	Female	72	31	0	0	0	7	13	123
	Male	90	40	0	0	0	9	9	148
2 to 5	Female	84	31	0	0	0	17	11	143
	Male	91	33	0	0	0	8	11	143
6 to 11	Female	78	38	0	0	0	7	6	129
	Male	99	30	1	0	0	7	11	148
12 to 15	Female	78	18	0	0	0	5	8	109
	Male	58	21	0	0	0	2	3	84
16 to 18	Female	52	24	0	1	0	3	2	82
	Male	29	8	0	0	0	1	0	38
Total*		731	274	1	1	0	66	74	1,147

*Demographic data had not been entered into CHRIS for eight children.

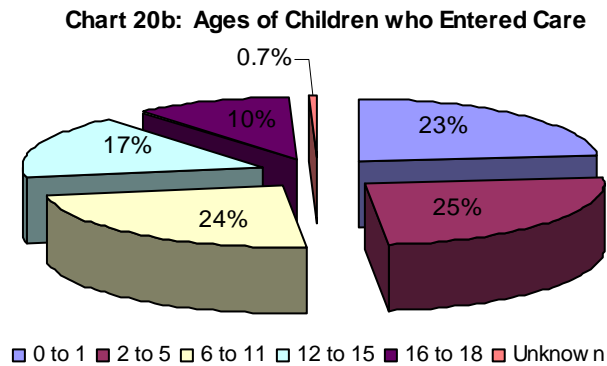
The chart below shows that 63 percent of the children who entered foster care during the quarter were white, while 24 percent of the children were black. National data indicate that 46 percent of the children who entered care were white, 27 percent were black and 18 percent were Hispanic⁸.

Chart 20a: Ethnicity of Children who Entered Care

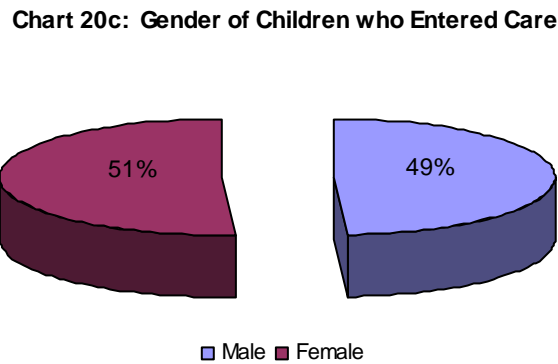


⁸ Adoption and Foster Care Analysis and Reporting System (AFCARS) data submitted for children in foster care between 10/01/2003 and 9/30/2004 as of June 2006.

The following chart shows that children between the ages of two and five represented the largest group of children who entered foster care during the quarter (25%).



The following chart shows the gender of the children who entered foster care during the second quarter. Of the 1,155 children who entered care, 51 percent of the children were female and 49 percent were male.



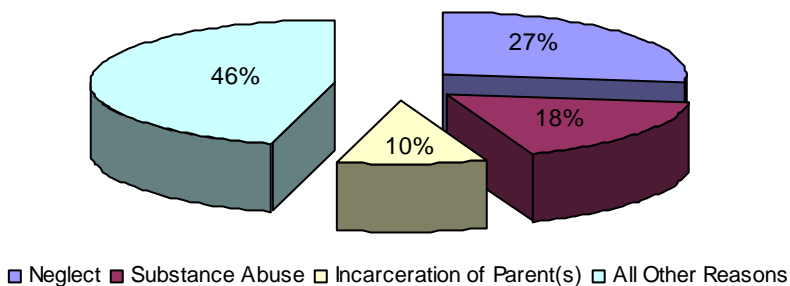
The reasons for entry into foster care during the quarter (Table 8) remained very similar to the reasons for children’s entry into care at the end of the quarter (Table 9). Neglect and substance abuse⁹ were the most prevalent reasons children entered care.

**Table 8: Reasons Children were Placed in Foster Care During the Quarter by Age
3rd Quarter SFY 2007**

	0 to 1	2 to 5	6 to 11	12 to 15	16 to 18	18+	Total
Neglect	433	599	662	422	125	2	2,243
Substance Abuse	401	758	345	292	23	0	1,478
Parent Incarceration	172	235	247	149	36	0	839
Physical Abuse	144	169	196	169	58	0	736
Child’s Behavior	0	29	96	258	111	2	496
Abandonment	48	69	93	114	62	1	387
Inadequate Housing	134	175	208	126	38	0	681
Caretaker Illness	86	118	153	168	59	0	584
Sexual Abuse	30	89	168	168	41	0	496
Truancy	5	14	41	68	34	0	162
Child’s Disability	15	8	22	15	2	0	62
Parent Death	6	6	16	12	8	0	48
Sex Offender	4	6	7	23	10	0	50
Relinquishment	5	2	8	12	1	0	28
Adoption	0	0	0	2	0	0	2
Managed Mental Health	0	0	1	2	1	0	4
Other	3	4	26	10	2	0	45
Teen Parent in Care	63	5	0	1	3	0	72
Total*	1,549	1,885	2,289	2,011	674	5	8,413

*There are more reasons for entry than children in care because a child may have more than one reason for entry.

**Chart 21: Reasons Children in Care During the Quarter
were Placed in Foster Care**



⁹ Of the 1,478 reasons for entry attributed to substance abuse, substance abuse by children accounted for 107 reasons for entry (7%), while substance abuse by parents accounted for 1,371 reasons for entry (93%).

**Table 9: Reasons Children in Foster Care at the End of the Quarter were Placed in Care
3rd Quarter SFY 2007**

	Gender	White	Black	Asian	AIAN	NAPI	Hispanic	More Than 1 Race	Total
Neglect	<i>Female</i>	541	248	2	0	0	51	73	915
	<i>Male</i>	560	268	1	3	1	51	65	949
Substance Abuse	<i>Female</i>	386	154	3	0	0	22	28	593
	<i>Male</i>	374	156	0	5	0	26	39	600
Parent Incarceration	<i>Female</i>	184	92	0	1	1	24	38	340
	<i>Male</i>	205	81	0	4	1	27	27	345
Physical Abuse	<i>Female</i>	148	107	0	0	1	15	24	295
	<i>Male</i>	187	88	0	0	1	16	17	309
Child's Behavior	<i>Female</i>	126	60	1	0	0	7	18	212
	<i>Male</i>	131	54	1	0	0	6	14	206
Abandonment	<i>Female</i>	80	58	0	0	0	7	9	154
	<i>Male</i>	90	69	0	0	0	4	14	177
Inadequate Housing	<i>Female</i>	157	88	0	0	0	16	25	286
	<i>Male</i>	178	92	0	1	0	10	25	306
Caretaker Illness	<i>Female</i>	154	57	0	0	0	11	22	244
	<i>Male</i>	150	60	0	2	0	14	18	244
Sexual Abuse	<i>Female</i>	173	75	2	0	0	15	24	289
	<i>Male</i>	86	22	1	0	0	8	9	126
Truancy	<i>Female</i>	47	26	0	0	0	4	3	80
	<i>Male</i>	38	13	0	0	0	1	6	58
Child's Disability	<i>Female</i>	20	6	0	0	0	0	1	27
	<i>Male</i>	23	4	0	0	0	2	1	30
Parent Death	<i>Female</i>	9	6	0	0	0	0	3	18
	<i>Male</i>	7	5	0	0	0	0	7	19
Sex Offender	<i>Female</i>	8	1	0	0	0	0	1	10
	<i>Male</i>	23	6	0	0	0	1	1	31
Relinquishment	<i>Female</i>	4	4	0	0	0	0	1	9
	<i>Male</i>	10	2	0	0	0	0	2	14
Managed Mental Health	<i>Female</i>	0	0	0	0	0	0	0	0
	<i>Male</i>	2	1	0	0	0	0	0	3
Adoption	<i>Female</i>	0	1	0	0	0	0	0	1
	<i>Male</i>	1	0	0	0	0	0	0	1
Teen Parent in Care	<i>Female</i>	9	20	0	0	0	5	4	38
	<i>Male</i>	7	14	0	0	0	3	0	24
Other	<i>Female</i>	10	7	0	0	0	0	1	18
	<i>Male</i>	7	14	0	0	0	0	2	23
Total*		4,135	1,959	11	16	5	346	522	6,994

*There are more reasons for entry than children in care because a child may have more than one reason for entry.

Exits from Foster Care

During the quarter, 937 children left foster care, which was an increase from the previous quarter (883).

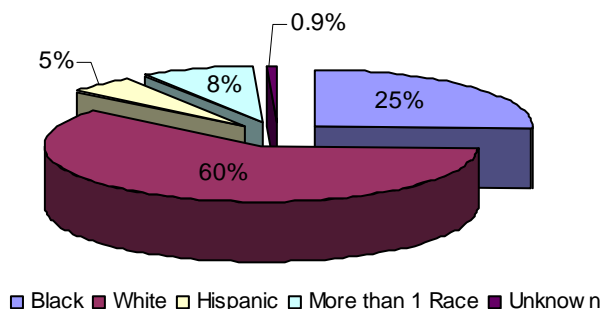
**Table 10: Characteristics of Children Exiting Foster Care During the Quarter
3rd Quarter SFY 2007**

Age	Gender	White	Black	Asian	AIAN	NAPI	Hispanic	More Than 1 Race	Total
0 to 1	Female	49	16	1	0	0	5	10	81
	Male	40	20	0	0	0	2	5	67
2 to 5	Female	62	22	0	0	0	10	12	106
	Male	57	33	0	0	0	7	11	108
6 to 11	Female	82	31	0	0	0	9	9	131
	Male	81	31	1	1	0	3	8	125
12 to 15	Female	60	18	0	0	0	4	6	88
	Male	37	20	0	0	0	3	10	70
16 to 18	Female	58	28	0	1	0	2	4	93
	Male	30	15	0	0	0	0	3	48
18+	Female	4	2	0	0	0	0	0	6
	Male	4	2	0	0	0	0	0	6
Total*		564	238	2	2	0	45	78	929

*Demographic data had not been entered into CHRIS for eight children.

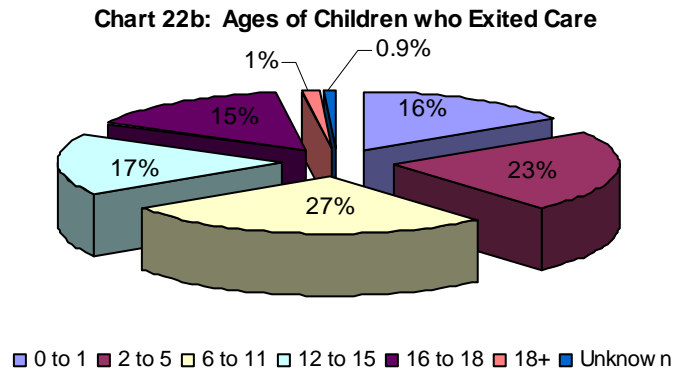
Of the 937 children who left foster care, 60 percent were white and 25 percent were black. National data indicate that 45 percent of the children who left foster care were white and 29 percent were black¹⁰. During the same quarter one year ago, 59 percent of the children who exited foster care were white, whereas 27 percent were black.

Chart 22a: Ethnicity of Children who Exited Care

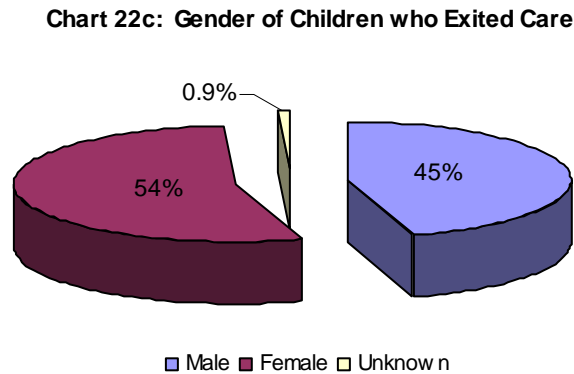


¹⁰ Adoption and Foster Care Analysis and Reporting System (AFCARS) data submitted for children in foster care between 10/01/2003 and 9/30/2004 as of June 2006.

The following chart shows that children between the ages 6 and 11 (27%) and those between 2 and 5 (23%) represented the largest groups of children who left foster care during the quarter.



Of the children who left care during the quarter, 54 percent were female and 45 percent were male.



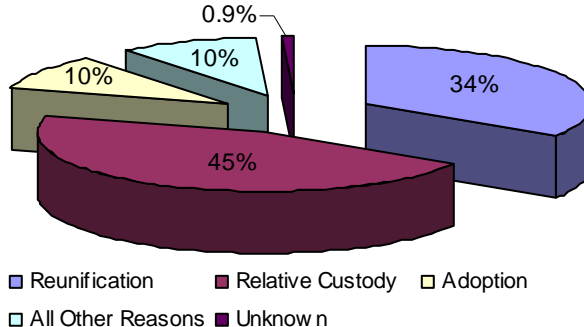
**Table 11: Reasons Children Exited Foster Care by Age
3rd Quarter SFY 2007**

Reason	Age						Total
	0 to 1	2 to 5	6 to 11	12 to 15	16 to 18	18+	
Reunification	44	86	92	58	41	0	321
Relative Custody	83	97	119	79	44	1	423
Adoption	15	29	34	9	4	0	91
Child Aged Out	0	0	0	0	35	10	45
Non-Relative Custody	5	2	10	10	11	0	38
Custody Transfer	1	0	0	1	2	0	4
Emancipation	0	0	0	0	4	1	5
Child Death	0	0	1	1	0	0	2
Total*	148	214	256	158	141	12	929

*Demographic data had not been entered into CHRIS for eight children.

The most prevalent reason that children left foster care during the quarter was relative custody (45%). The second most prevalent reason was reunification (34%). National data indicate that the three most prevalent reasons children left care were reunification (54%), adoption (18%) and relative care (12%)¹¹.

Chart 23: Most Prevalent Reasons Children Left Care



¹¹ Adoption and Foster Care Analysis and Reporting System (AFCARS) data submitted for children in foster care between 10/01/2003 and 9/30/2004 as of June 2006.

Permanency Goals of Children in Foster Care

The Division maintains two primary goals for children in foster care: safety and permanency. The second of these concerns is expressed by setting a permanency goal for each child in foster care. For the third quarter, returning home remained the most prevalent goal among children in foster care at 49 percent. National data reveal very similar figures to the numbers shown here¹².

**Table 12: Permanency Goals of Children in Foster Care
2nd Quarter SFY 2007 – 3rd Quarter SFY 2007**

	2nd Quarter		3rd Quarter		National
Return Home	1,655	45%	1,859	48%	49%
Adoption	730	20%	672	17%	20%
Independence	481	13%	455	12%	n/a
Remain at Home	251	7%	335	9%	n/a
Relative Care	124	3%	136	4%	4%
Guardianship	15	.4%	15	.4%	3%
Emancipation	1	.03%	3	.08%	6%
Long Term Care	0	0%	0	0%	8%
Not Yet Established	415	11%	371	9%	9%
Total*	3,672	100%	3,846	100%	100%

*Sum of individual percentages may not equal 100% due to rounding.

¹² Adoption and Foster Care Analysis and reporting System (AFCARS) data submitted for the FY 2004 (10/01/03 to 9/30/04) as of June 2006.

Length of Stay of Children in Foster Care

For the 4,736 children in foster care during the quarter, 55 percent were in care less than one year. A comparison to national data indicates that children in the state’s foster care system remain in care a decidedly shorter amount of time¹³.

**Table 13a: Length of Stay of Children in Foster Care (Including Relative Care)
3rd Quarter SFY 2007**

	Number	Percentage	National
Less than 30 days	663	14%	5%
30-90 Days	578	12%	18%
3-6 Months	577	12%	
6-12 Months	793	17%	17%
12-24 Months	881	19%	21%
24-36 Months	516	11%	12%
36+ Months	728	15%	27%
Total*	4,736	100%	100%

**Table 13b: Length of Stay of Children in Relative Care
3rd Quarter SFY 2007**

	Number	Percentage*
Less than 30 days	23	5%
30-90 Days	39	9%
3-6 Months	72	17%
6-12 Months	79	18%
12-24 Months	111	26%
24-36 Months	62	14%
36+ Months	44	10%
Total	430	100%

*Sum of individual percentages may not equal 100% due to rounding.

**Table 13c: Length of Stay of Children in Foster Care (Excluding Relative Care)
3rd Quarter SFY 2007**

	Number	Percentage*
Less than 30 days	640	15%
30-90 Days	539	13%
3-6 Months	505	12%
6-12 Months	714	17%
12-24 Months	770	18%
24-36 Months	454	11%
36+ Months	684	16%
Total	4,306	100%

*Sum of individual percentages may not equal 100% due to rounding.

¹³ Adoption and Foster Care Analysis and reporting System (AFCARS) data submitted for the FY 2004 (10/01/03 to 9/30/04) as of June 2006.

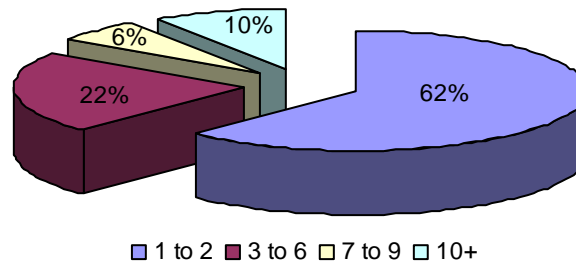
Number of Placements of Children in Foster Care

For the third quarter, 62 percent of the children in care at the quarter’s end experienced two or fewer placements, which was one percentage point higher than the previous quarter.

**Table 14: Number of Placements of Children in Foster Care
2nd Quarter SFY 2007 – 3rd Quarter SFY 2007**

	2nd Quarter		3rd Quarter	
1-2 Placements	2,228	61%	2,393	62%
3-6 Placements	841	23%	853	22%
7-9 Placements	246	7%	233	6%
10+ Placements	357	10%	367	10%
Total	3,672	100%	3,846	100%

Chart 24: Number of Placements for Children in Care at the End of the Quarter



Characteristics of Children who Experienced Two or More Placements

At the end of the third quarter, 3,846 children were in foster care. Of those, 1,999 children experienced two or more placements while in care.

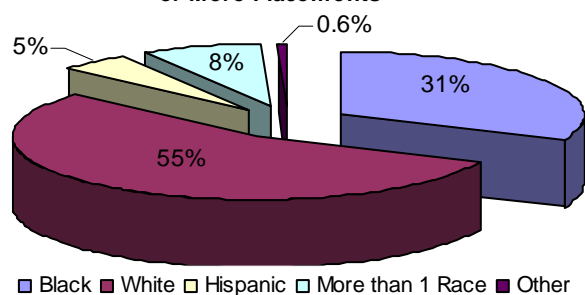
**Table 15: Characteristics of Children who Experienced Two or More Placements
3rd Quarter SFY 2007**

Age	Gender	White	Black	Asian	AIAN	NAPI	Hispanic	More Than 1 Race	Total
0 to 1	Female	24	21	0	0	1	5	6	57
	Male	32	21	0	1	0	6	4	64
2 to 5	Female	79	47	0	0	0	10	10	146
	Male	117	51	0	3	1	14	13	199
6 to 11	Female	122	64	0	0	0	12	21	219
	Male	162	82	0	1	0	19	25	289
12 to 15	Female	142	84	0	1	0	9	23	256
	Male	146	73	0	1	0	5	31	256
16 to 18	Female	151	95	1	0	0	9	15	271
	Male	129	86	1	0	1	8	11	236
18+	Female	0	0	0	0	0	0	0	0
	Male	0	0	0	0	0	0	0	0
Total		1,104	624	2	7	3	97	159	1,996

*Demographic data had not been entered into CHRIS for three children.

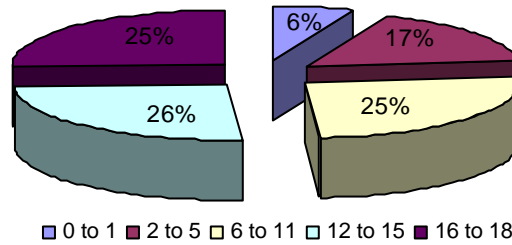
Of the 1,999 children who experienced two or more placements, 55 percent were white and 31 percent were black. These percentages were similar to the previous quarter.

Chart 25a: Ethnicity of Children who Experienced Two or More Placements



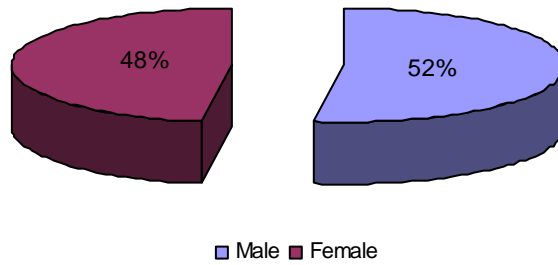
Children between the ages of 6 to 11 (25%) and 12 to 15 (26%) represented the largest groups of children who experienced two or more placements.

Chart 25b: Ages of Children who Experienced Two or More Placements



More male children (52%) than female children (48%) experienced two or more placements, similar to the previous quarter.

Chart 25c: Gender of Children who Experienced Two or More Placements



Current Placement of Children in Foster Care

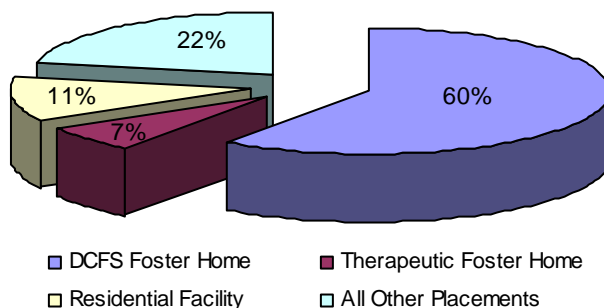
More foster children were placed in DCFS foster homes (60%) at the end of the third quarter than in any other type of foster care placement.

Table 16: Current Placement of Children in Foster Care at the End of the Quarter

Placement	Age						Total
	0 to 1	2 to 5	6 to 11	12 to 15	16 to 18	Over 18	
DCFS Foster Home	436	742	545	339	193	48	2,303
Relative Care	25	49	31	17	10	3	135
Therapeutic Foster Home	2	22	121	72	42	8	267
Pre-Adoptive Home	11	43	42	7	4	1	108
Emergency Shelter	1	5	33	44	43	0	126
Residential Facility	18	13	75	176	128	32	442
Youth Services	0	0	0	7	24	3	34
Runaway	1	0	0	16	54	4	75
Trial Home Visit	22	36	36	33	11	0	138
Hospital/Medical	7	2	14	28	13	1	65
Sexual Offender Treatment	0	0	0	14	7	1	22
Independent Living	0	0	0	2	5	53	60
Incarceration	0	0	0	10	12	3	25
Temporary Placement	3	9	11	7	1	1	32
Unknown*	4	3	3	3	0	0	14
Total	530	924	911	775	547	158	3,846

*Unknown due to data entry after data were collected for the report.

Chart 26: Current Placement of Children in Foster Care



Characteristics of Children on Runaway Status at the End of the Quarter

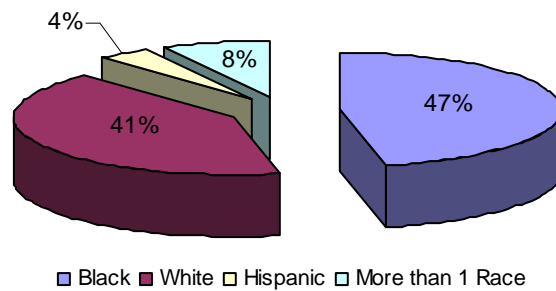
Seventy-five children were on runaway status at the end of the third quarter. This number represented a decrease from the previous quarter (77).

**Table 17: Characteristics of Children on Runaway Status at the End of the Quarter
3rd Quarter SFY 2007**

Age	Gender	White	Black	Asian	AIAN	NAPI	Hispanic	More Than 1 Race	Total
0 to 1	Female	0	0	0	0	0	0	0	0
	Male	0	1	0	0	0	0	0	1
2 to 5	Female	0	0	0	0	0	0	0	0
	Male	0	0	0	0	0	0	0	0
6 to 11	Female	0	0	0	0	0	0	0	0
	Male	0	0	0	0	0	0	0	0
12 to 15	Female	6	4	0	0	0	0	0	10
	Male	3	1	0	0	0	0	2	6
16 to 18	Female	14	15	0	0	0	1	3	33
	Male	7	12	0	0	0	1	1	21
18+	Female	1	1	0	0	0	0	0	2
	Male	0	1	0	0	0	1	0	2
Total		31	35	0	0	0	3	6	75

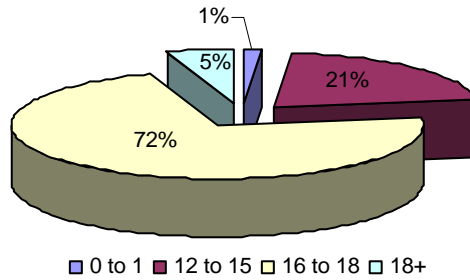
Of the children on runaway status at the end of the quarter, 41 percent were white and 47 percent were black. This was different to the children on runaway state at the end of the second quarter when 43 percent were white and 40 percent were black.

Chart 27a: Ethnicity of Children on Runaway Status at the End of the Quarter



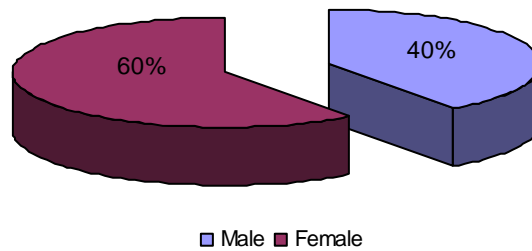
At the end of the quarter, 72 percent of the children on runaway status were between the ages of 16 and 18, which was a sixteen percentage point increase over the previous quarter.

Chart 27b: Ages of Children on Runaway Status at the End of the Quarter



More female children (60%) than male children (40%) were on runaway status at the end of the quarter.

Chart 27c: Gender of Children on Runaway Status at the End of the Quarter



Characteristics of Children in Relative Care

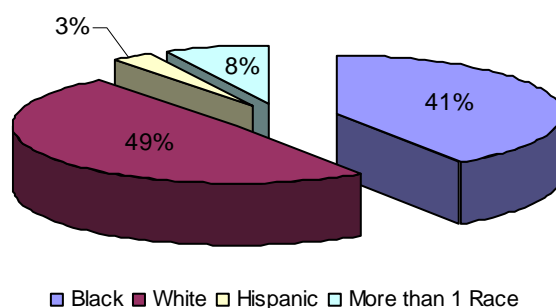
During the third quarter, 430 children were in relative care, an increase from the previous quarter (401). This number includes children who remained in relative care from previous quarters as well as children who came into relative care during the quarter. The following table outlines the characteristics of children in relative care.

**Table 18: Characteristics of Children in Relative Care
3rd Quarter SFY 2007**

Age	Gender	White	Black	Asian	AIAN	NAPI	Hispanic	More Than 1 Race	Total
0 to 1	Female	16	11	0	0	0	0	3	30
	Male	16	10	0	0	0	2	0	28
2 to 5	Female	37	22	0	0	0	6	0	65
	Male	33	31	0	0	0	2	3	70
6 to 11	Female	29	27	1	0	0	1	9	67
	Male	18	25	1	0	0	0	6	50
12 to 15	Female	21	17	0	0	0	0	3	41
	Male	16	12	0	0	0	1	6	35
16 to 18	Female	15	12	1	0	0	1	1	30
	Male	5	6	0	0	0	0	1	12
Over 18	Female	1	1	0	0	0	0	0	2
	Male	0	0	0	0	0	0	0	0
Total		207	174	3	0	0	13	32	430

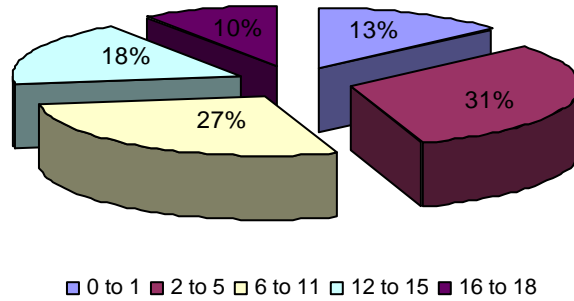
White children represented the highest percentage of children in relative care for the third quarter at 49 percent, similar to the previous quarter.

Chart 28a: Ethnicity of Children in Relative Care



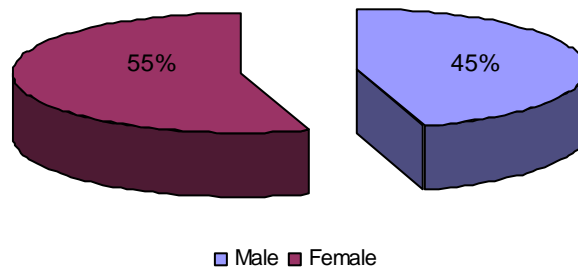
Children between the ages of 2 and 5 (31%) represented the largest age group of children in relative care, followed by children between the ages of 6 and 11 (27%).

Chart 28b: Ages of Children in Relative Care



Of the 430 children in relative care during the quarter, 55 percent were female and 45 percent were male, which were similar to the previous quarter.

Chart 28c: Gender of Children in Relative Care



**Part III: Description of Population and Services
Section III: Adoption**

Characteristics of Children with a Permanency Goal of Adoption During the Quarter

There were 752 children with a permanency goal of adoption during the quarter. This was a decrease from the previous quarter (866). The table below outlines those children’s characteristics.

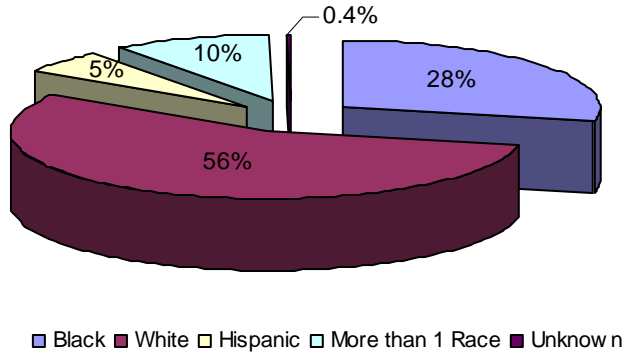
**Table 19: Characteristics of Children with a Permanency Goal of Adoption During the Quarter
3rd Quarter SFY 2007**

Age	Gender	White	Black	Asian	AIAN	NAPI	Hispanic	More Than 1 Race	Total
0 to 1	<i>Female</i>	14	11	1	0	0	0	3	29
	<i>Male</i>	17	10	0	0	0	1	3	31
2 to 5	<i>Female</i>	46	29	0	0	0	5	10	90
	<i>Male</i>	63	27	0	0	0	8	14	112
6 to 11	<i>Female</i>	63	25	0	0	0	8	13	109
	<i>Male</i>	86	35	0	0	0	10	8	139
12 to 15	<i>Female</i>	37	26	0	1	0	1	11	76
	<i>Male</i>	51	32	0	0	0	5	9	97
16 to 18	<i>Female</i>	26	4	0	0	0	0	2	32
	<i>Male</i>	17	13	0	0	0	0	1	31
Over 18	<i>Female</i>	1	0	0	0	0	0	1	2
	<i>Male</i>	0	1	0	0	0	0	0	1
Total		421	213	1	1	0	38	75	749

*Demographic data had not been entered into CHRIS for three children.

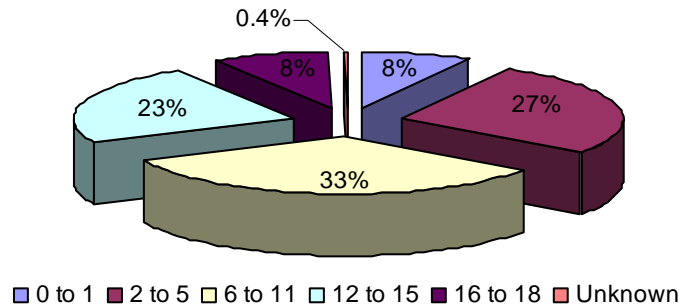
Of the 752 children with a permanency goal of adoption during the quarter, 56 percent were white, 28 percent were black and 5 percent were Hispanic. These numbers were similar to the previous quarter.

Chart 29a: Ethnicity of Children with a Permanency Goal of Adoption During the Quarter



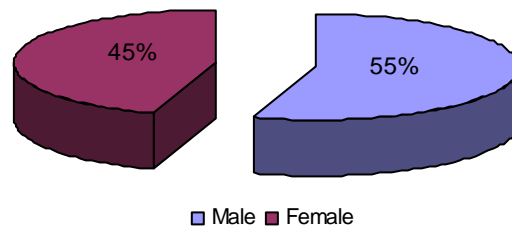
Children between the ages of 6 and 11 (33%) represented the largest group of children with a permanency goal of adoption. The percentage breakdown was similar to the previous quarter.

Chart 29b: Ages of Children with a Permanency Goal of Adoption During the Quarter



Of the 752 children with a permanency goal of adoption, 55 percent were male and 45 percent were female. These percentages were similar to the previous quarter.

Chart 29c: Gender of Children with a Permanency Goal of Adoption During the Quarter



Characteristics of Children with a Permanency Goal of Adoption at the End of the Quarter

There were 672 children with a permanency goal of adoption at the end of the quarter. The table below outlines those children’s characteristics.

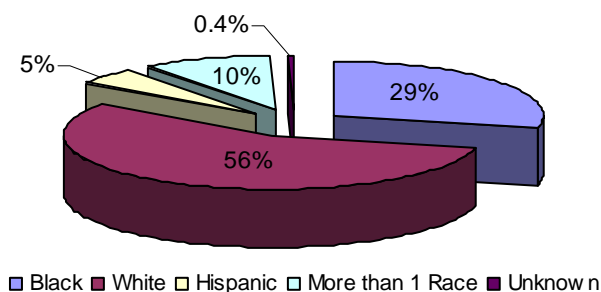
**Table 20: Characteristics of Children with a Permanency Goal of Adoption at the End of the Quarter
3rd Quarter SFY 2007**

Age	Gender	White	Black	Asian	AIAN	NAPI	Hispanic	More Than 1 Race	Total
0 to 1	Female	10	9	0	0	0	0	2	21
	Male	14	7	0	0	0	1	3	25
2 to 5	Female	43	27	0	0	0	3	9	82
	Male	57	23	0	0	0	6	11	97
6 to 11	Female	50	24	0	0	0	6	12	92
	Male	76	32	0	0	0	10	7	125
12 to 15	Female	35	23	0	1	0	1	11	71
	Male	51	30	0	0	0	5	9	95
16 to 18	Female	22	4	0	0	0	0	2	28
	Male	17	12	0	0	0	0	1	30
Over 18	Female	1	0	0	0	0	0	1	2
	Male	0	1	0	0	0	0	0	1
Total		376	192	0	1	0	32	68	669

*Demographic data had not been entered into CHRIS for three children.

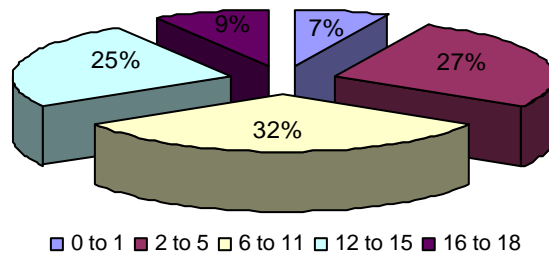
Of the 672 children with a permanency goal of adoption at the end of the quarter, 56 percent were white, 29 percent were black and 10 percent were of more than one race. These percentages were similar to the previous quarter.

Chart 30a: Ethnicity of Children with a Permanency Goal of Adoption at the End of the Quarter



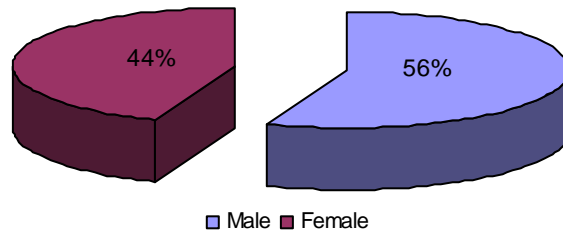
At the end of the quarter, children between the ages of 6 and 11 (32%) continued to represent the largest age group with a permanency goal of adoption, and children between the ages of 2 and 5 (27%) represented the second largest group.

Chart 30b: Ages of Children with a Permanency Goal of Adoption at the End of the Quarter



More male children (56%) than female children (44%) set a permanency goal of adoption at the end of the third quarter, similar to the previous quarter.

Chart 30c: Gender of Children with a Permanency Goal of Adoption at the End of the Quarter



Characteristics of Children whose Parents have had Parental Rights Terminated During the Quarter

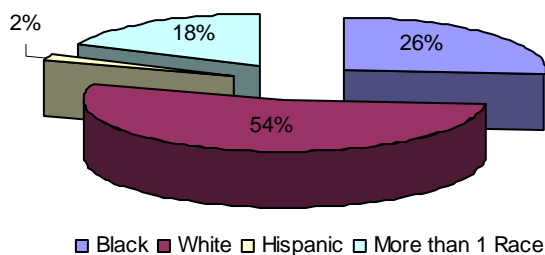
There were 50 children whose parents had their parental rights terminated during the third quarter. The table below outlines the characteristics of those children.

**Table 21: Characteristics of Children whose Parents have had Parental Rights Terminated During the Quarter
3rd Quarter SFY 2007**

Age	Gender	White	Black	Asian	AIAN	NAPI	Hispanic	More Than 1 Race	Total
0 to 1	Female	5	1	0	0	0	0	1	7
	Male	5	0	0	0	0	0	1	6
2 to 5	Female	2	7	0	0	0	0	2	11
	Male	7	1	0	0	0	0	1	9
6 to 11	Female	1	2	0	0	0	1	4	8
	Male	2	2	0	0	0	0	0	4
12 to 15	Female	3	0	0	0	0	0	0	3
	Male	0	0	0	0	0	0	0	0
16 to 18	Female	1	0	0	0	0	0	0	1
	Male	1	0	0	0	0	0	0	1
Total		27	13	0	0	0	1	9	50

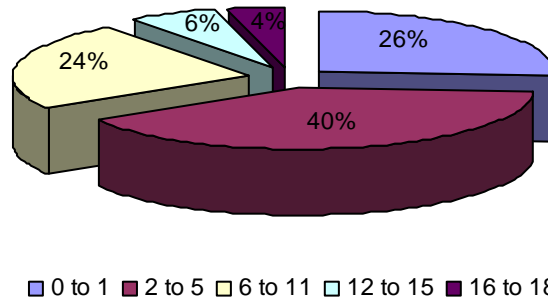
During the quarter, 54 percent of the children whose parents had their parental rights terminated during the quarter were white, 26 percent were black and two percent were Hispanic.

Chart 31a: Ethnicity of Children whose Parents have had Parental Rights Terminated



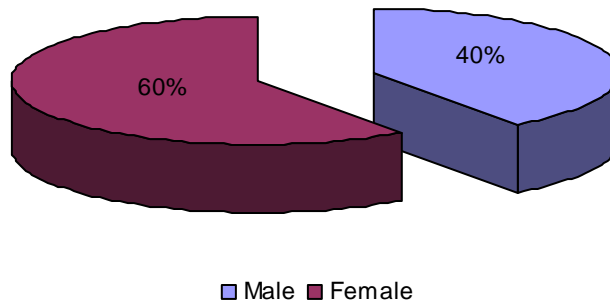
Children between the ages of two and five (40%) represented the largest group of children whose parents terminated their parental rights during the quarter.

Chart 31b: Ages of Children whose Parents have had Parental Rights Terminated



During the quarter, more female children (60%) than male children (40%) had parents who terminated their parental rights.

Chart 31c: Gender of Children whose Parents have had Parental Rights Terminated



Characteristics of Children Available for Adoption at the End of the Quarter

At the end of the third quarter, 369 children were available for adoption, a decrease from the previous quarter (418). Demographic information for children available for adoption, shown in the table below, was very similar to previous quarters.

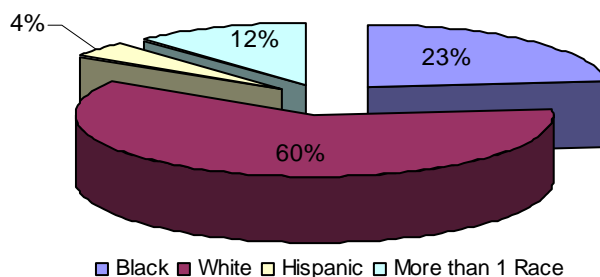
**Table 22: Characteristics of Children Available for Adoption at the End of the Quarter
3rd Quarter SFY 2007**

Age	Gender	White	Black	Asian	AIAN	NAPI	Hispanic	More Than 1 Race	Total
0 to 1	Female	5	3	0	0	0	0	0	8
	Male	4	2	0	0	0	1	2	9
2 to 5	Female	26	5	0	0	0	0	4	35
	Male	29	10	0	0	0	4	5	48
6 to 11	Female	29	15	0	0	0	5	10	59
	Male	47	14	0	0	0	2	5	68
12 to 15	Female	23	15	0	1	0	0	9	48
	Male	35	14	0	0	0	3	6	58
16 to 18	Female	12	3	0	0	0	0	2	17
	Male	12	5	0	0	0	0	1	18
Total		222	86	0	1	0	15	44	368

*Demographic data had not been entered into CHRIS for one child.

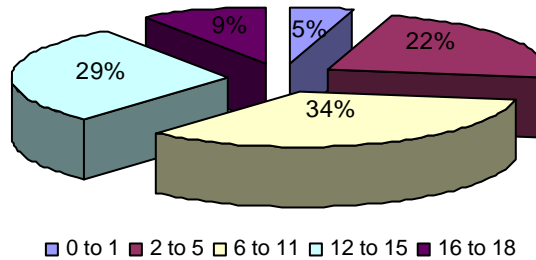
Of the children available for adoption, 60 percent were white and 23 percent were black. These percentages were similar to the previous quarter.

Chart 32a: Ethnicity of Children Available for Adoption at the End of the Quarter



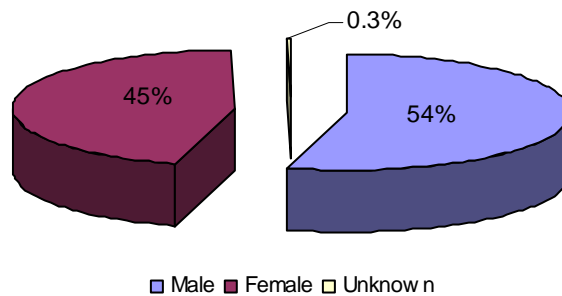
At the end of the quarter, more children between the ages of 6 and 11 (34%) were available for adoption than any other age group.

Chart 32b: Ages of Children Available for Adoption at the End of the Quarter



At the end of the quarter, more male children (54%) than female children (45%) were available for adoption. These percentages were similar to the second quarter.

Chart 32c: Gender of Children Available for Adoption at the End of the Quarter



Current Placements of Children Available for Adoption

At the end of the third quarter, more children who were available for adoption were placed in DCFS foster homes (52%) than in any other type of placement, followed by therapeutic foster homes (15%). These results were similar to the previous quarter.

**Table 23: Current Placements of Children Available for Adoption
3rd Quarter SFY 2007**

Placement	Number of Children	Percentage
DCFS Foster Home	193	52%
Pre-Adoptive Home	37	10%
Pre-Adoptive Home (Foster Parent)	2	.5%
Therapeutic Foster Home	54	15%
Incarceration	2	.5%
Residential	34	9%
Residential Facility	18	5%
Hospital/Medical	11	3%
Emergency Shelter	5	1.4%
Youth Services	5	1.4%
Educational Residential	1	.3%
Independent Living	3	.8%
Temporary Placement	3	.8%
Unknown	1	.3%
Total*	369	100%

*The sum of individual percentages may not equal 100% due to rounding.

Characteristics of Children in Pre-adoptive Placements

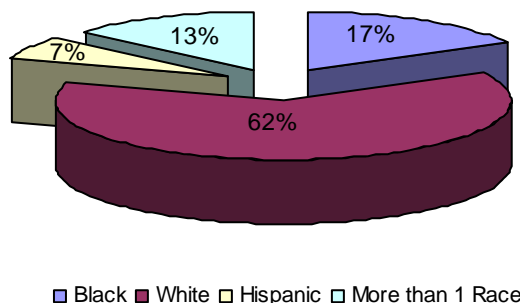
During the third quarter, 76 children were placed in pre-adoptive homes. This number includes children who could have entered pre-adoptive homes during a previous quarter as well as children who were placed in pre-adoptive homes during the current quarter.

**Table 24: Characteristics of Children in Pre-adoptive Placements
3rd Quarter SFY 2007**

Age	Gender	White	Black	Asian	AIAN	NAPI	Hispanic	More Than 1 Race	Total
0 to 1	Female	2	0	1	0	0	0	1	4
	Male	1	0	0	0	0	0	0	1
2 to 5	Female	12	3	0	0	0	0	2	17
	Male	7	4	0	0	0	2	2	15
6 to 11	Female	6	2	0	0	0	2	2	12
	Male	12	2	0	0	0	0	2	16
12 to 15	Female	3	1	0	0	0	0	0	4
	Male	1	1	0	0	0	1	0	3
16 to 18	Female	3	0	0	0	0	0	1	4
	Male	0	0	0	0	0	0	0	0
Total		47	13	1	0	0	5	10	76

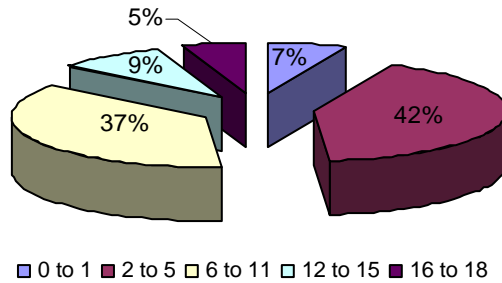
Of the 76 children in pre-adoptive homes during the quarter, 62 percent were white and 17 percent were black. During the second quarter, 80 percent were white and nine percent were black.

Chart 33a: Ethnicity of Children Placed in Pre-adoptive Homes During the Quarter



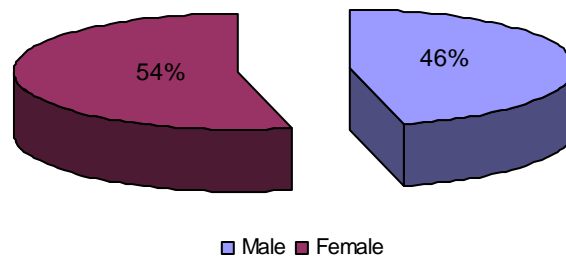
The largest group of children placed in pre-adoptive homes was children between the ages of 2 and 5 (42%). The smallest percentage of children in pre-adoptive placements was children between the ages of 16 and 18 (5%).

33b: Ages of Children Placed in Pre-adoptive Homes During the Quarter



Of the 76 children placed in pre-adoptive homes during the quarter, 46 percent were male and 54 percent were female. These percentages were similar to last quarters.

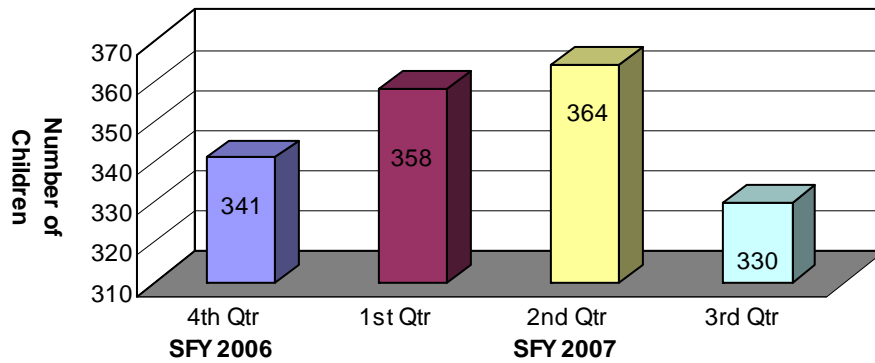
33c: Gender of Children Placed in Pre-adoptive Homes During the Quarter



Children not Placed in Adoptive Homes whose Parents have had their Parental Rights Terminated

During the third quarter, there were 330 children whose parents had their parental rights terminated but were not placed in adoptive homes, a decrease from the previous quarter (364). This statistic was derived by subtracting the number of children placed in adoptive homes at the end of the quarter (39) from the number of children available for adoption at the end of the quarter (369).

Chart 34: Children not Placed in Adoptive Homes whose Parents have had their Parental Rights Terminated



Children with Special Needs

During the third quarter, 50 children with special needs were in pre-adoptive placements¹⁴. Children with special needs are defined as children who have severe medical or psychological needs that require ongoing treatment. Children at high risk for the development of serious physical, mental or emotional conditions may be considered special needs if documentation is provided by a medical professional specializing in the area of the condition for which the child is considered at risk. Other children may be considered special needs if they are Caucasian children over the age of nine, African American children at age two years or older; or children who are members of a sibling group of three or more that are to be placed together.

**Table 25: Children with Special Needs who were Placed in Adoptive Homes
3rd Quarter SFY 2007**

Special Needs Condition	Number of Children
Race	50
Age	50
Member of sibling group	39

Characteristics of Children with Finalized Adoptions

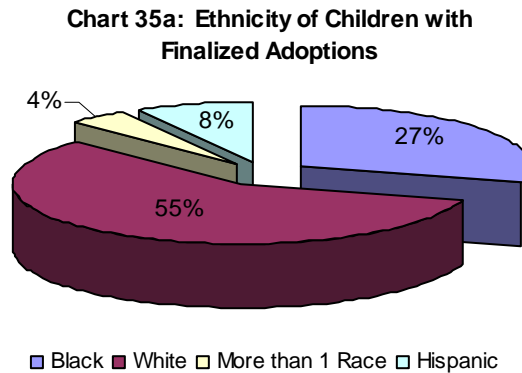
During the quarter, 77 children had their adoptions finalized, an increase from the previous quarter (71). The following table outlines the characteristics of the children with finalized adoptions.

**Table 26: Characteristics of Children with Finalized Adoptions
3rd Quarter SFY 2007**

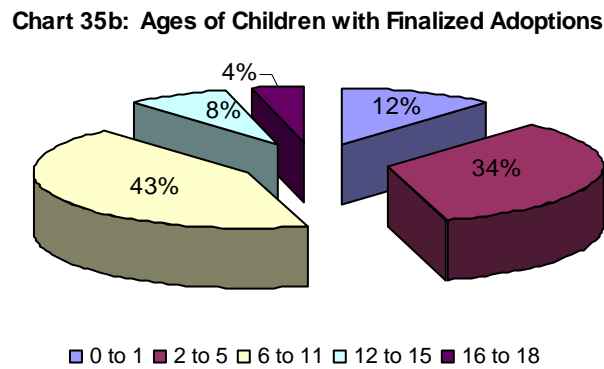
Age	Gender	White	Black	Asian	AIAN	NAPI	His-panic	More Than 1 Race	Total
0 to 1	Female	2	1	2	0	0	0	0	5
	Male	2	1	0	0	0	1	0	4
2 to 5	Female	6	4	0	0	0	1	1	12
	Male	6	5	2	0	0	1	0	14
6 to 11	Female	11	3	0	1	0	2	1	18
	Male	8	5	0	0	0	1	1	15
12 to 15	Female	4	1	0	0	0	0	0	5
	Male	1	0	0	0	0	0	0	1
16 to 18	Female	2	0	0	0	0	0	0	2
	Male	0	1	0	0	0	0	0	1
Total		42	21	4	1	0	6	3	77

¹⁴ This number does not take into account children with severe medical and psychological needs because this data is not available in CHRIS (AR Children’s Reporting and Information System). As enhancements are made to the data system to capture this information, it will be provided in future reports.

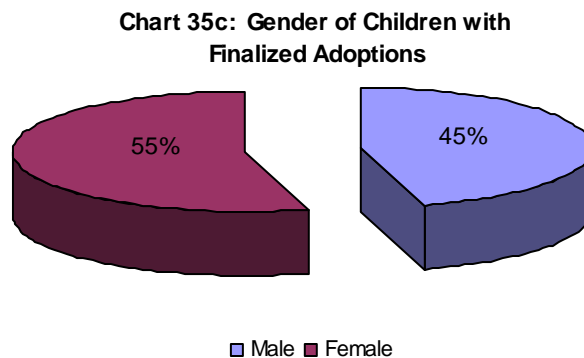
Of the 77 finalized adoptions during the third quarter, 55 percent of the children were white and 27 percent were black.



Children between the ages of 6 and 11 represented the largest group of children whose adoptions were finalized during the quarter at 43 percent.



During the quarter, 55 percent of the children whose adoptions were finalized were female and 45 percent were male.



Subsidized Adoptions

During the third quarter, 59 children began receiving adoption subsidies. Of those, 54 children received federally-funded subsidies and six received state-funded subsidies.

Characteristics of Children who Received Adoption Subsidies

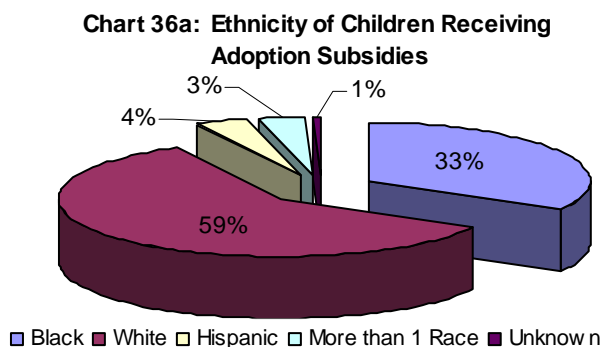
During the third quarter, 2,807 children received adoption subsidies. The following table outlines the demographics of those children.

**Table 27: Characteristics of Children Receiving Adoption Subsidies
3rd Quarter SFY 2007**

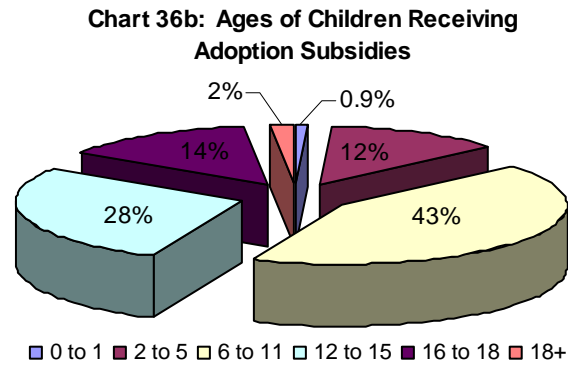
Age	Gender	White	Black	Asian	AIAN	NAPI	Hispanic	More Than 1 Race	Total
0 to 1	Female	10	2	2	0	0	0	1	15
	Male	7	3	0	0	0	1	0	11
2 to 5	Female	91	44	0	0	0	10	15	160
	Male	99	60	2	0	0	17	9	187
6 to 11	Female	337	205	1	2	0	30	30	605
	Male	354	193	0	0	0	24	23	594
12 to 15	Female	228	138	1	0	0	17	5	389
	Male	254	133	0	1	0	3	7	398
16 to 18	Female	121	62	0	0	0	4	2	189
	Male	109	80	0	0	0	4	1	194
18+	Female	16	7	0	0	0	0	0	23
	Male	17	7	0	0	0	0	0	24
Total*		1,643	934	6	3	0	110	93	2,789

*Demographic data had not been entered into CHRIS for 18 children.

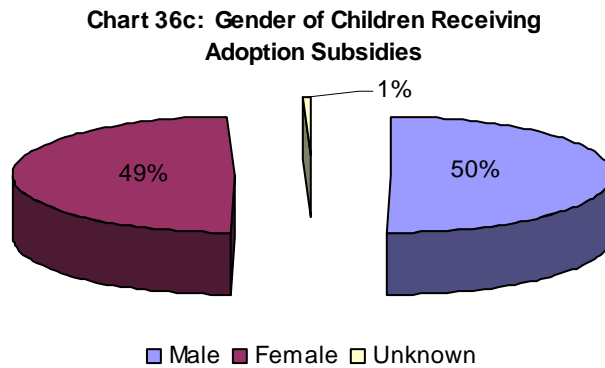
Fifty-nine percent of the children who received adoption subsidies were white and 33 percent were black, similar to the previous quarter.



The majority of the children receiving adoption subsidies during the quarter were between the ages of 6 and 11 (43%).



Of the children receiving adoption subsidies, 50 percent were male and 49 percent were female.



Adoptive Homes

At the beginning of the third quarter, 376 adoptive homes were available; at the end of the third quarter, 354 adoptive homes were available.

**Table 28: Adoptive Homes
3rd Quarter SFY 2007**

	Total Adoptive Homes	Non-Foster Adoptive Homes	Foster Adoptive Homes
Homes available for children at beginning of quarter	376	140	236
Newly available homes	33	16	17
Homes that had children placed during the quarter	37	19	18
Home that experienced a disruption	4	4	0
Homes that closed without a placement	22	9	13
Homes available at the end of the quarter	354	132	222