

Quarterly Performance Report

***2nd Quarter
SFY 2007***

(October 2006 – December 2006)

**Arkansas Department of Health and Human Services
Division of Children and Family Services
Quality Assurance Unit**

Hornby Zeller Associates, Inc.

March 2007

A large, bold, white letter 'Q' is centered vertically within the top portion of a red vertical bar on the right side of the page.A large, bold, white letter 'P' is centered vertically within the middle portion of a red vertical bar on the right side of the page.A large, bold, white letter 'R' is centered vertically within the bottom portion of a red vertical bar on the right side of the page.

Table of Contents

Executive Summary	i
Part I: Performance Indicators	1
Percentage of Families with True Allegations of Child Maltreatment Three Months, Six Months and One Year after a Previous True Report	2
Percentage of Foster Families with True Reports of Maltreatment.....	2
Percentage of Children Receiving Supportive Services, Protective Services or Intensive Family Services (IFS) who were Abused or Neglected within One Year of the Initiation of Services.....	3
Percentage of Children Receiving Supportive Services, Protective Services or Intensive Family Services (IFS) who Entered Foster Care Within One Year of the Initiation of Services	4
Percentage of Children in Foster Care who Returned Home within Eighteen Months	4
Percentage of Children in Foster Care who have Experienced Three or more Placements within the Past Eighteen Months.....	5
Percentage of Siblings in Placement who are Placed Together	6
Percentage of Children Living with Adoptive Families within Twelve Months of the Termination of Parental Rights	7
Number of Children Placed in Pre-adoptive Homes whose Adoptions were Finalized within Twelve Months of Entering Pre-adoptive Placements	8
Part II: Compliance Index	8
Timely Initiation of Child Maltreatment Assessments	9
Timely Completion of Child Maltreatment Assessments.....	10
24- and 72-Hour Initial Health Screenings for Children Entering Foster Care	11
Comprehensive Health Assessments.....	12
Foster Home Recruitment	13
Foster Home Re-evaluations	13
Required Visits Made by Worker	14
Part III: Description of Population and Services	15
Section I: True Child Maltreatment Reports	16
Child Maltreatment Assessments.....	16
Characteristics of Children in True Maltreatment Reports.....	18
Section II: Foster Care	21
Characteristics of Children in Foster Care.....	21
Entries into Foster Care	25
Exits from Foster Care	29
Permanency Goals of Children in Foster Care.....	32
Length of Stay of Children in Foster Care	33
Number of Placements of Children in Foster Care.....	34
Characteristics of Children who Experienced Two or More Placements ..	35

Current Placement of Children in Foster Care	37
Characteristics of Children on Runaway Status at the End of the Quarter.....	38
Characteristics of Children in Relative Care.....	40
Section III: Adoption.....	42
Characteristics of Children with a Permanency Goal of Adoption During the Quarter.....	42
Characteristics of Children with a Permanency Goal of Adoption at the End of the Quarter	44
Characteristics of Children whose Parents have had Parental Rights Terminated During the Quarter	46
Characteristics of Children Available for Adoption at the End of the Quarter.....	48
Current Placements of Children Available for Adoption	50
Characteristics of Children in Pre-adoptive Placements	51
Children not Placed in Adoptive Homes whose Parents have had their Parental Rights Terminated	53
Children with Special Needs	54
Characteristics of Children with Finalized Adoptions.....	54
Subsidized Adoptions.....	56
Characteristics of Children who Received Adoption Subsidies	56
Adoptive Homes.....	57

EXECUTIVE SUMMARY

The Quarterly Performance Report (QPR) is distributed to Division of Children and Family Services' (DCFS) managers and legislative committees dealing with children and youth. The QPR for the second quarter of State Fiscal Year (SFY) 2007, specifically October through December 2006, consists of three parts:

1. **Performance Indicators**, which provide information on service outcomes, such as:
 - a. *Percentage of Families with True Allegations of Child Maltreatment Three Months, Six Months and One Year after a Previous True Report*
 - b. *Percentage of Siblings in Placement who are Placed Together*
 - c. *Percentage of Children Living with Adoptive Families within Twelve Months of the Termination of Parental Rights*

2. **Compliance Index**, which reports on the Division's compliance with requirements set by DCFS with guidance from the Arkansas legislative children and youth committees, such as:
 - a. *Timely Completion of Child Maltreatment Assessments*
 - b. *24- and 72-Hour Initial Health Screenings for Children Entering Foster Care*
 - c. *Foster Home Recruitment*

3. **Description of Population and Services**, which describes the children who were the subjects of maltreatment reports; were served in foster care; and were provided adoption services, such as:
 - a. *Permanency Goals of Children in Foster Care*
 - b. *Characteristics of Children in Pre-Adoptive Homes*

The QPR provides this information on a quarterly basis, showing trends over time. The report provides the agency with information on the populations it serves and on pertinent issues so the agency can improve performance and better target its efforts.

Part I: Performance Indicators

DCFS has established nine performance indicators to measure its progress with regard to its major goals of child safety, permanency and well-being. During the second quarter, DCFS continued its efforts toward meeting these goals. Overall, DCFS maintained a performance standard that mirrors past efforts and successes.

For the second quarter, there were no noteworthy areas for Performance Indicators.

Part II: Compliance Index

DCFS has set compliance measures with guidance from the House Committees on Aging, Children and Youth, Legislative and Military Affairs and the Senate Interim Committee on Children and Youth. An index is compiled by reporting the level of compliance with these measures.

For the second quarter, the QPR addresses six noteworthy areas, as shown below:

- Timely Initiation of Child Maltreatment Assessments

The percentage for timely initiations stood at **82 percent**, four percentage points lower than the previous quarter and below the goal of 95 percent.

Four areas improved compliance for Priority One initiations and three areas improved compliance with Priority Two initiations. Although compliance fell below the goal of 95 percent, areas have put corrective actions in place to help remedy the barriers that exist.

Staff shortages have impacted compliance in some areas including 4, 5, 6, 7, 8 and 9. Staff have been hired in many areas but are currently in training.

- Timely Completion of Child Maltreatment Assessments

The percentage for timely completions stood at **52 percent**, nine percentage points lower than the previous quarter and below the goal of 90 percent.

One area increased compliance with Priority One investigations and two increased compliance with Priority Two investigation completions. Special Assist Teams have helped increase compliance for Area 2 and an Assist Team will be put in place for Area 9. Staff have been assigned to Area 8 to assist in completing investigations. Investigators' workloads will be evaluated daily and conferences held on status of investigations.

- 24-Hour and 72-Hour Initial Health Screenings (IHS) for Children Entering Foster Care

The percentage for 24-hour initial health screenings stood at **71 percent**, 19 percentage points lower than the previous quarter and below the goal of 95 percent.

The percentage for 72-hour initial health screenings stood at **79 percent**, two percentage points lower than the previous quarter and below the goal of 95 percent.

For the 24-hour screenings, one area exceeded the 95 percent goal with 100 percent compliance, and three areas had a compliance rate that exceeded 80 percent.

For the 72-hour screenings two areas met or exceeded the goal, and two areas had a compliance rate that was close to the 95 percent goal.

The absence of a county supervisor in one area and the absence of a health service worker in another contributed to the low compliance rates. In other areas, screenings were late due to scheduling problems and lack of current providers to accept new Medicaid patients.

Many areas have put corrective actions in place to help alleviate this problem next quarter. One area has outlined a process for workers to follow to increase communication and make certain appointments are kept. Area 5 was able to fill the vacant health worker position by the time this report was distributed and compliance should increase next quarter.

Many areas are having difficulties getting 24-hour screenings due to lack of available providers. DCFS will work with the Division of Medical Services (DMS) to identify more primary care physicians around the state.

- Comprehensive Health Assessments

The percentage for comprehensive health assessments stood at **64 percent**, twelve percentage points lower than the previous quarter and below the goal of 95 percent.

Three areas improved compliance with timely comprehensive assessments from the previous quarter. There were many reasons compliance decreased this quarter. One of the most significant decreases was in Area 5. Several reasons contributed to low compliance, but the most prominent was the loss of the Boone County Clinic. This required workers to make appointments at other sites, which forced workers to

transport children further and made it difficult for workers to find available slots in other counties.

Area 4 has made efforts to improve communication between all parties involved and has invited UAMS to the foster parent conference to reiterate the importance of the health assessments. In addition, the area has transferred some administrative responsibilities from the health service workers to let them focus on appointments for the children. DCFS is working with UAMS to increase availability of clinics.

- Foster Home Recruitment

During the second quarter, DCFS recruited **41** foster homes, compared to **51** during the previous quarter. This is below the goal of 80 new homes per quarter.

Areas have struggled in the past with recruiting new foster homes due to high caseloads. DCFS now has resource workers that hold monthly or bi-weekly meetings for prospective foster parents to attend in order to receive information about foster parenting. Area 6 has also begun new recruiting efforts, such as public speaking at churches, social groups and various medical professions. Area 6 staff are also working with the faith-based community on a major initiative to recruit and support foster and adoptive homes, as well as providing support for child welfare staff. This initiative, entitled “The C.A.L.L.” (Children of Arkansas Loved for a Lifetime), is a collaboration between the the agency and local churches.

- Required Visits Made by Worker

During the second quarter, the percentage of children who received a visit decreased from **62 percent** in October to **56 percent** in November, and **48 percent** in December. This is a change from the previous quarter when the percentage of children who received visits for July through September was 67 percent, 66 percent and 54 percent, respectively.

DCFS continues to experience a staffing shortage which has resulted in low compliance with our worker visitation goal. DCFS continues to focus on filling vacant positions; 83 percent of positions were filled at the time of the last QPR. This has increased to 85 percent of the positions being filled in January 2007.

DCFS was notified of a federal grant that can be used to increase worker visits with children in foster care. The Division is developing a plan for use of the grant money.

Part III: Description of Population and Services

The Description of Population and Services section describes the children who were subjects of maltreatment reports; were served in foster care; and were provided with adoption services.

There were no noteworthy areas in this section during the second quarter.

PART I: PERFORMANCE INDICATORS

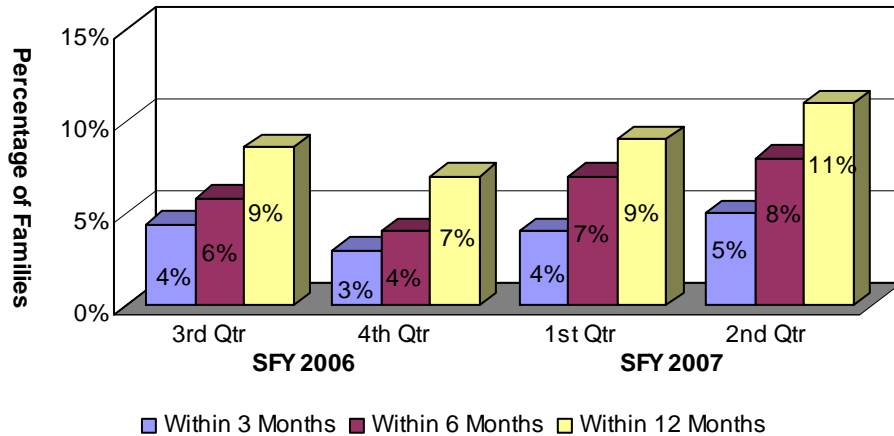
The Division has established nine performance measures to indicate achievement levels regarding its major goals in child safety, family preservation and permanency:

- Percentage of families with true allegations of child maltreatment three months, six months and one year after a previous true report;
- Percentage of foster families with true reports of maltreatment;
- Percentage of children receiving Supportive Services, Protective Services or Intensive Family Services (IFS) who were abused or neglected within one year of the initiation of services;
- Percentage of children receiving Supportive Services, Protective Services or Intensive Family Services (IFS) who entered foster care within one year of the initiation of services;
- Percentage of children in foster care who returned home within eighteen months;
- Percentage of children in foster care who have experienced three or more placements within the past eighteen months;
- Percentage of siblings in placement who are placed together;
- Percentage of children living with adoptive families within twelve months of the termination of parental rights; and
- Number of children placed in pre-adoptive homes whose adoptions were finalized within twelve months of entering pre-adoptive placements.

Percentage of Families with True Allegations of Child Maltreatment Three Months, Six Months and One Year after a Previous True Report

Of the 1,474 families involved in true reports of maltreatment during the second quarter one year ago, only 11 percent (165) had a subsequent true report within 12 months. Fifty-seven percent of true reports involved both the same perpetrator and the same type of maltreatment as the initial report¹.

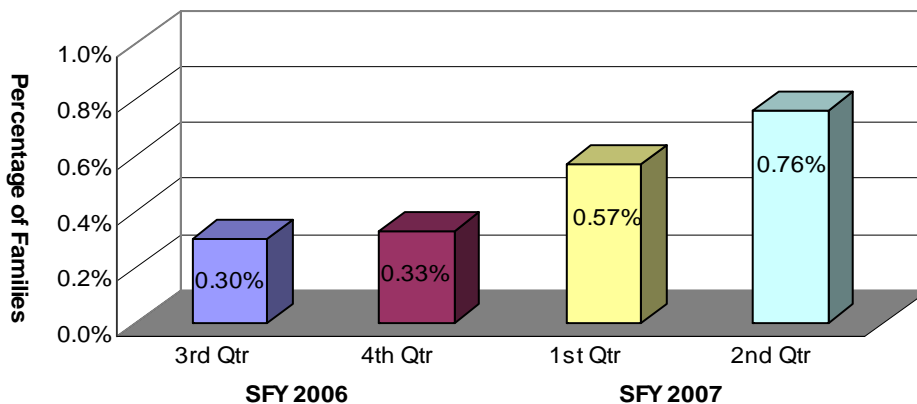
Chart 1: Recurrence of Maltreatment within 12 Months of Initial Report



Percentage of Foster Families with True Reports of Maltreatment

Of the 45 foster home maltreatment reports received during the second quarter, only ten were found to be true. Based upon 1,313 active foster homes² during the quarter, the percentage of foster families with true reports of maltreatment was .76 percent.

Chart 2: Percentage of Foster Families with True Reports of Maltreatment



¹ The remaining 43 percent of the subsequent reports were distributed as follows: No repetition of perpetrator or type of abuse – 15.15 percent; Same perpetrator only – 5.45 percent; Same type of abuse only – 22.42 percent.

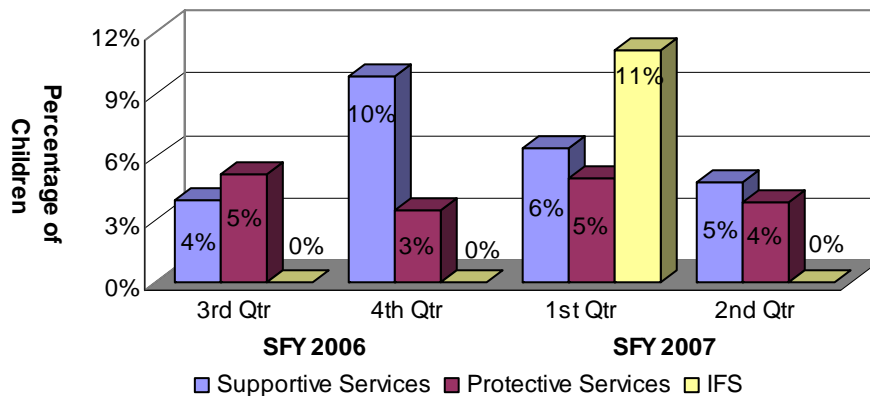
² This includes family and therapeutic foster homes.

Percentage of Children Receiving Supportive Services, Protective Services or Intensive Family Services (IFS) who were Abused or Neglected within One Year of the Initiation of Services

Generally, families receiving Supportive Services have less severe problems. However, families receiving Intensive Family Services (IFS) are, by definition, at imminent risk of having one or more children placed in foster care or already have children in foster care. Families receiving Protective Services generally fall between those two extremes.

Of the 167 children who began receiving Supportive Services between October and December 2005, 8 children (5%) experienced a true report of maltreatment within one year. Of the 2,711 children who began receiving Protective Services, 103 children (4%) were involved in a true report within one year. There were no children who began receiving IFS during that same time.

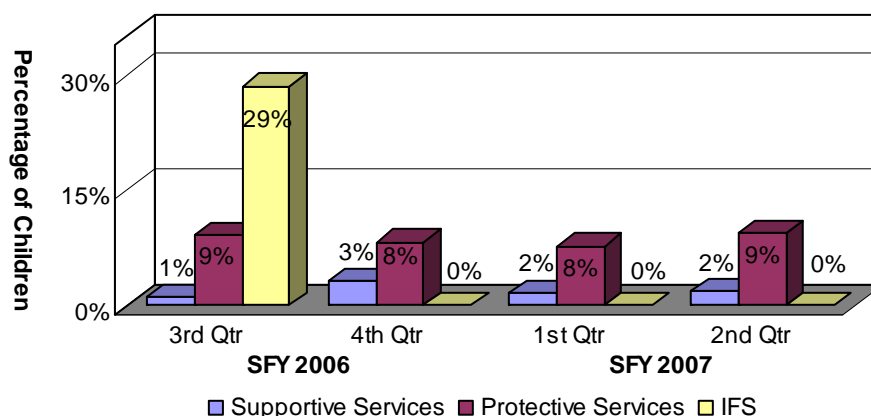
Chart 3: Children Receiving Supportive Services, Protective Services or IFS who were Abused or Neglected within One Year of the Initiation of Services



Percentage of Children Receiving Supportive Services, Protective Services or Intensive Family Services (IFS) who Entered Foster Care within One Year of the Initiation of Services

Three of the 167 children who began receiving Supportive Services; 257 of the 2,711 children who began receiving Protective Services; and there were no children who began receiving IFS between October and December 2005.

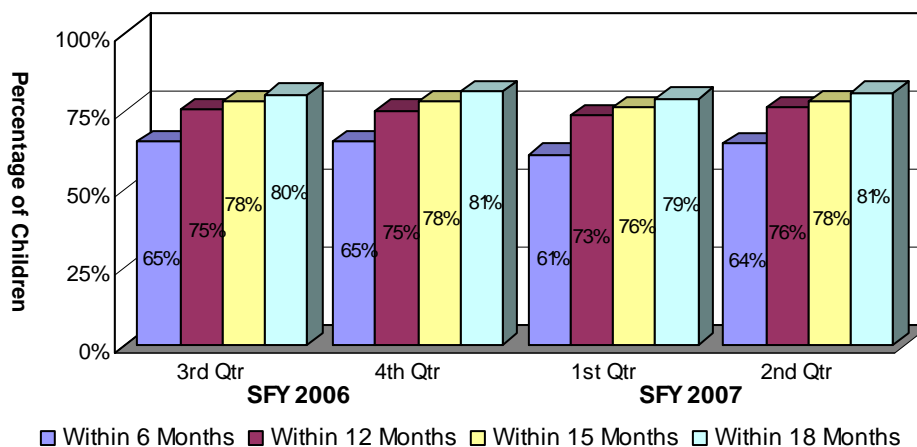
Chart 4: Children Receiving Supportive Services, Protective Services or Intensive Family Services who Entered Foster Care within One Year of the Initiation of Services



Percentage of Children in Foster Care who Returned Home within Eighteen Months

During the quarter 18 months prior to the current quarter, 851 children entered foster care. Of those, 81 percent or 687 children returned home within 18 months.

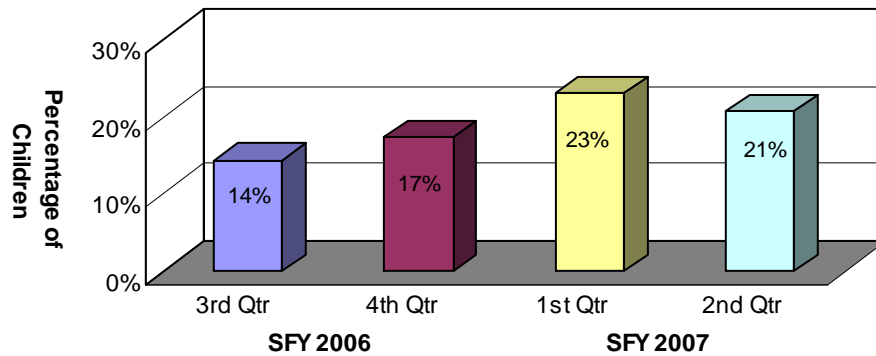
Chart 5: Children in Foster Care who Returned Home within Eighteen Months



Percentage of Children in Foster Care who have Experienced Three or more Placements within the Past Eighteen Months

Of the 904 children who entered foster care during the quarter 18 months prior to the current quarter, 188 children (21%) experienced three or more placements within 18 months. This represents a two percentage point decrease from the previous quarter. Of those same 904 children, 149 (16%) experienced three or more placements within 15 months of entering foster care.

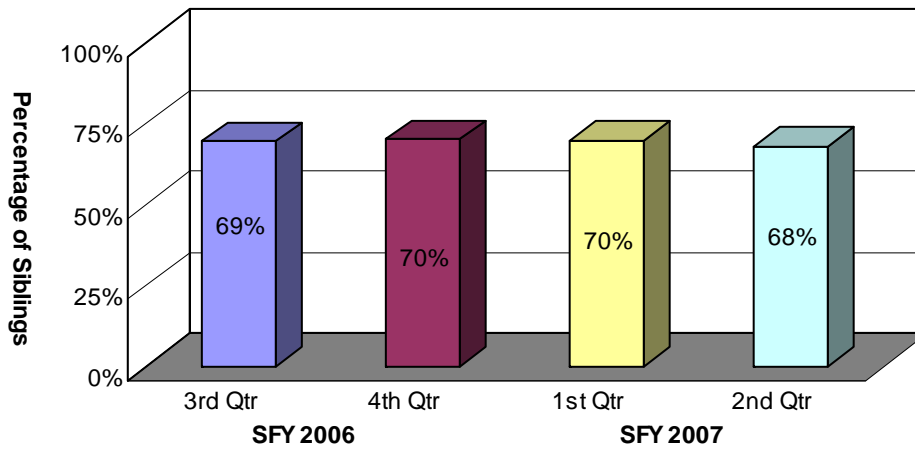
Chart 6: Children in Foster Care who have Experienced Three or More Placements within the Past Eighteen Months



Percentage of Siblings in Placement who are Placed Together

During the second quarter, there were 1,753 children with siblings in foster care. Sixty-eight percent of those children (1,192 children) were placed with at least one of their siblings. This was two percentage points lower than the previous quarter (70%) and lower than the same quarter ending one year ago (73%). Of those same 1,753 children, 790 (45%) were placed with all of their siblings, which was lower than the previous quarter. These figures do not exclude children who were placed separately for valid reasons such as safety issues or court orders.

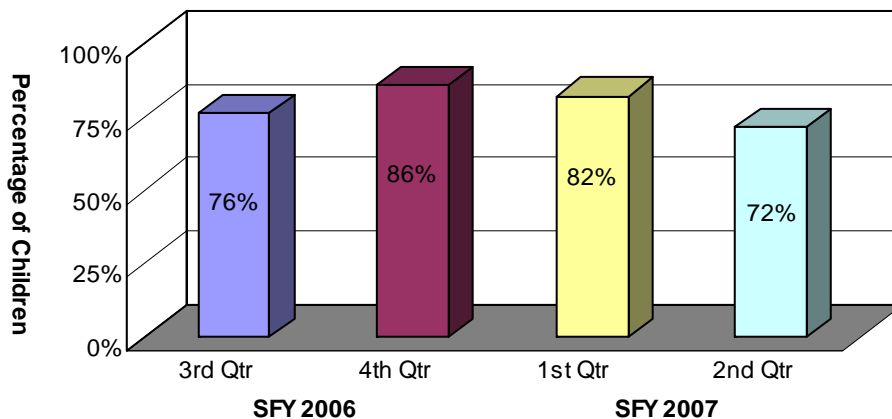
Chart 7: Siblings in Care who are Placed Together



Percentage of Children Living with Adoptive Families within Twelve Months of the Termination of Parental Rights

Of the 60 children whose parents had their parental rights terminated between October and December 2005, 43 children (72%) were placed in adoptive homes within 12 months of the termination of parental rights. This was 10 percentage points lower than the previous quarter.

Chart 8: Children Living with Adoptive Families within Twelve Months of the Termination of Parental Rights



Number of Children Placed in Pre-adoptive Homes whose Adoptions were Finalized within Twelve Months of Entering Pre-adoptive Placements

Fifty children were placed in pre-adoptive homes between October and December 2005. Of those, 33 children (66%) had their adoptions finalized within 12 months of being placed in pre-adoptive homes, higher than the previous quarter and higher than the same quarter one year ago. Four children (8%) experienced disruptions, which occur when a child has been placed in a pre-adoptive home and the family or the child decides not to proceed with the adoption and the child subsequently leaves the home. There were 16 children whose adoptions were still pending finalization 12 months after placement in adoptive homes.

**Table 1: Children Placed in Pre-adoptive Homes whose Adoptions were Finalized within Twelve Months of Entering Pre-adoptive Placements
2nd Quarter SFY 2007**

Adoption Status	Number of Children
Children Placed in Pre-adoptive Homes	50
Finalized Adoption	33
Disrupted Adoptive Placements	4
Children with a Disruption who were Re-placed in Pre-adoptive Homes	3
Still Pending after Twelve Months	16

PART II: COMPLIANCE INDEX

The Division has set compliance measures with guidance from the Joint Interim Committee on Children and Youth. An index is compiled by reporting the level of compliance in relation to these measures.

Goal Compliance Measure

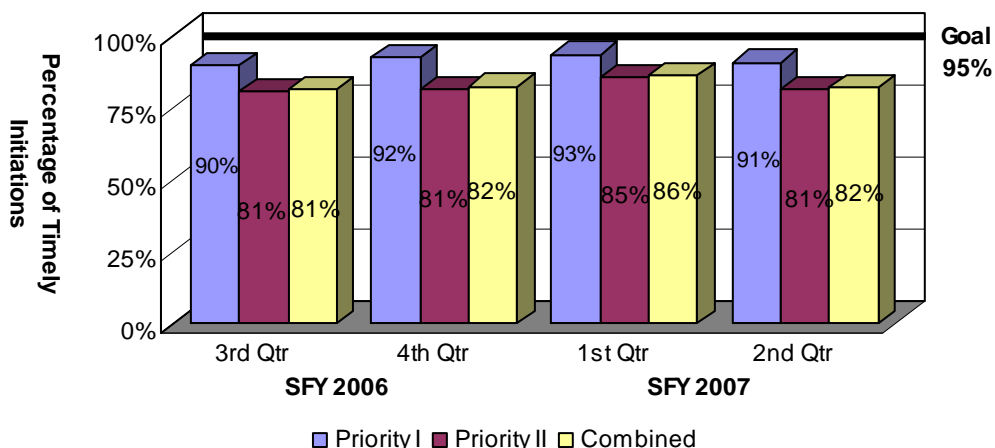
- 95%** ***Timely Initiation of Child Maltreatment Assessments.*** Timely initiation means the investigator interviews or observes the victim child outside the presence of the alleged offender within 24 hours of any report of alleged severe maltreatment or within 72 hours otherwise.
- 90%** ***Timely Completion of Child Maltreatment Assessments.*** Timely completion means a determination must be made regarding an allegation of child maltreatment within 30 days of receipt of the allegation.
- 95%** ***24-Hour Initial Health Screenings.*** This screening is conducted within 24 hours after removal from the home on children who enter foster care due to an allegation of severe maltreatment or if there is evidence of acute illness or injury.
- 95%** ***72-Hour Initial Health Screenings.*** This screening is conducted within 72 hours after removal from the home on all children who enter foster care who are not subject to the 24-hour screening.
- 95%** ***Comprehensive Health Assessments.*** The purpose of this assessment is to evaluate the physical and mental health status of all foster children and is to be completed within 60 days of a child entering foster care.
- 80** ***Foster Home Recruitment.*** DCFS must ensure that a sufficient number and homes variety of foster homes meeting minimal standards and matched to the needs and characteristics of foster children are available. The goal is 80 homes for the quarter or 320 homes for the year.
- 95%** ***Foster Home Re-evaluations.*** DCFS must re-evaluate at least annually each foster home's ability to care for children.
- 85%** ***Required Visits Made by Worker.*** DCFS must provide data on the percentage of monthly visits made by DCFS workers to children in foster care.

Timely Initiation of Child Maltreatment Assessments

Whenever there is an allegation of child maltreatment, the Family Service Worker, the Crimes Against Children Division (CACD) staff member or staff from another local law enforcement agency must interview or observe the victim child outside the presence of the alleged offender within 72 hours of the report (Priority II), unless there is an allegation of severe maltreatment, in which case the interview or observation must occur within 24 hours of the report (Priority I). There were 6,738 referrals for child maltreatment assessments during the second quarter. Of that number, 440 Priority I referrals and 4,762 Priority II referrals were assigned to DCFS for investigation. Of the DCFS Priority I referrals, 398 assessments were initiated within the required 24-hour period. Of the DCFS Priority II referrals, 3,868 assessments were initiated within the required 72-hour period³. The compliance rate for DCFS Priority I initiations was 91 percent and 81 percent for Priority II initiations, which resulted in a combined compliance rate of 82 percent, four percentage points lower than the previous quarter.

As noted previously, the Crimes Against Children Division (CACD) of the Arkansas State Police is also responsible for handling child abuse assessments. CACD was responsible for 1,536 of the 6,738 referrals that came in during the quarter, of which 1,481 were Priority I referrals and 55 were Priority II referrals. Of the Priority I referrals, 1,463 assessments (99%) were initiated in a timely manner. Of the Priority II referrals, 54 assessments (98%) were initiated in a timely manner.

Chart 9: Timely Initiation of Child Maltreatment Assessments

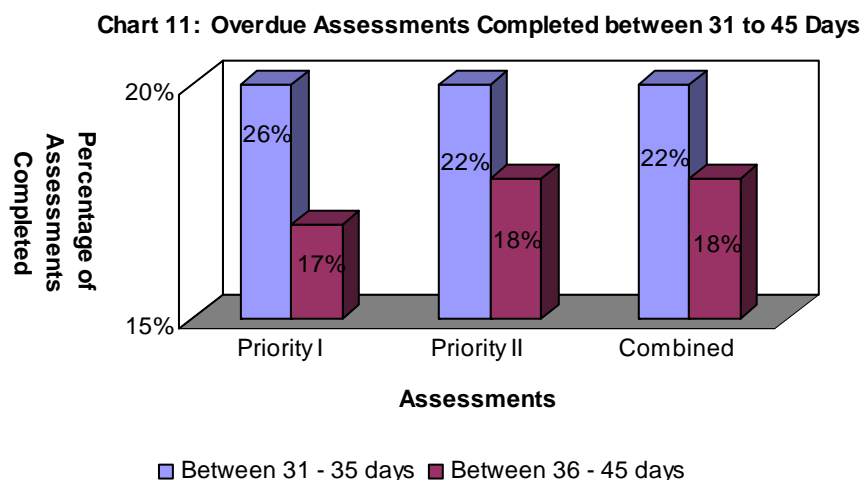
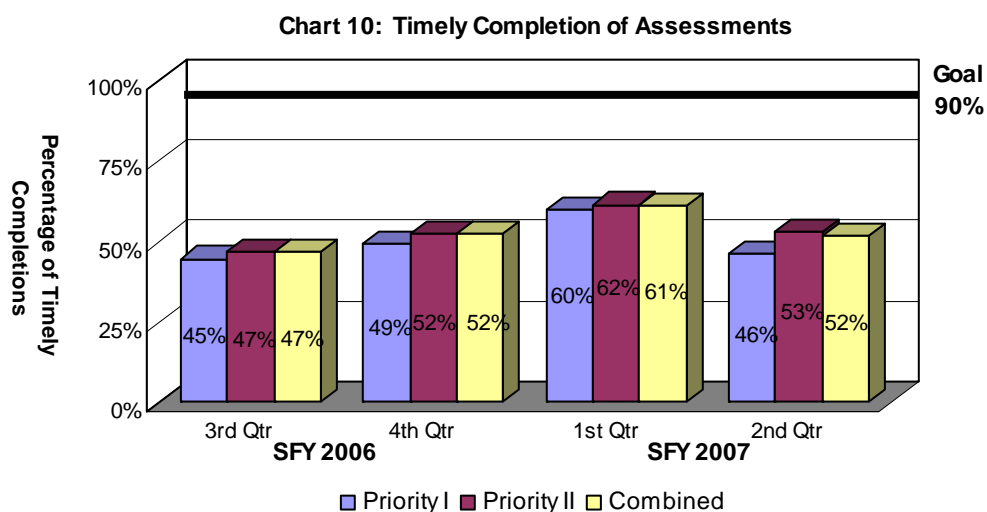


³ DCFS had 398 Priority I referrals and 3,868 Priority II referrals that were initiated in a timely manner. Of those, 84 Priority I (21%) and 1,038 Priority II referrals (27%) were considered compliant due to reasonable diligence. CACD had 1,463 Priority I referrals and 54 Priority II referrals that were initiated in a timely manner. Of those, 255 Priority I (17%) and 6 Priority II (11%) referrals were considered compliant due to reasonable diligence.

Timely Completion of Child Maltreatment Assessments

Of the 440 DCFS Priority I assessments initiated, 200 (46%) were completed within the required 30-day period. Of the 4,762 DCFS Priority II assessments initiated, there were 2,510 (53%) completed within the required 30-day period. Of the total 5,202 assessments assigned to DCFS, there were 2,710 assessments completed in a timely fashion. These completions resulted in a compliance rate of 52 percent, lower than the first quarter and still below the goal of 90 percent. (See plan of action in the Executive Summary.)

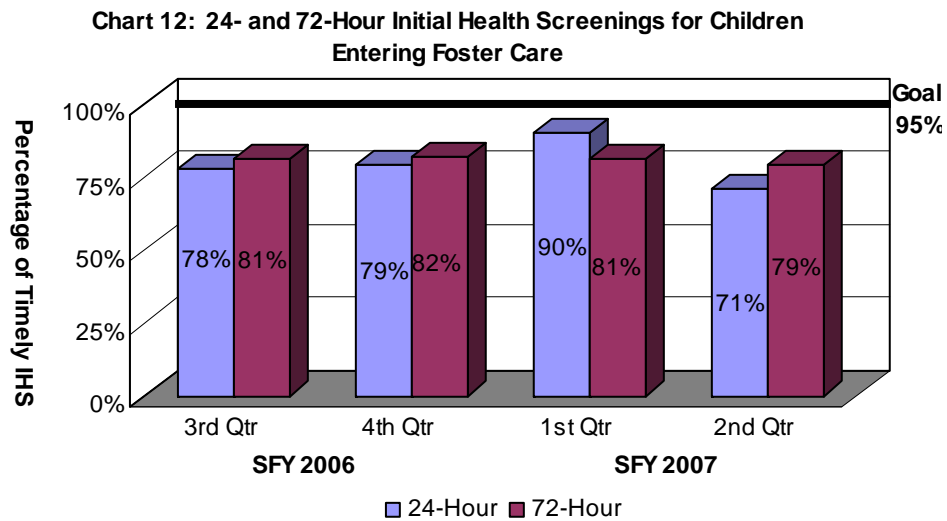
As referenced earlier, the Crimes Against Children Division (CACD) of the Arkansas State Police was responsible for 1,536 of the 6,738 incoming referrals during the quarter. Of that number, 1,481 were Priority I referrals and 55 were Priority II referrals. Of the Priority I assessments, 1,207 (82%) were completed in a timely fashion. Of the Priority II assessments, 50 (91%) were completed in a timely fashion.



24- and 72-Hour Initial Health Screenings for Children Entering Foster Care

When a child enters foster care due to an allegation of severe maltreatment or if there is evidence of acute illness or injury, DCFS must conduct an initial health screening within 24 hours of the child’s removal from the home. Of the 120 children who required the 24-hour health screening during the second quarter, 85 children (71%) received the screening in a timely manner. The compliance rate was 19 percentage points lower than the previous quarter and did not meet the goal of 95 percent.

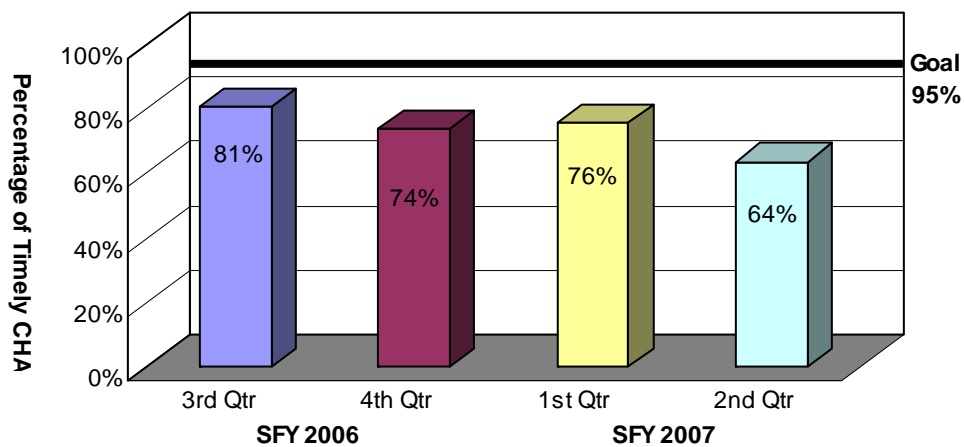
All children entering foster care who do not require the initial 24-hour health screening must still undergo an initial health screening within 72 hours of their removal. Of the 730 children, 574 (79%) received their screenings in a timely manner, which was two percentage points lower than the previous quarter and did not meet the goal of 95 percent. (See plan of action in the Executive Summary.)



Comprehensive Health Assessments

All children entering foster care must receive a comprehensive health assessment that evaluates their physical and mental health status within 60 days of entering foster care. Between August 2, 2006, and November 1, 2006, 545 children entered foster care and remained in care for at least 60 days. Of those children, 347 received their comprehensive health assessment within 60 days after entering care. The resulting compliance rate was 64 percent, twelve percentage points lower than the previous quarter, and below the goal of 95 percent. (See plan of action in the Executive Summary.)

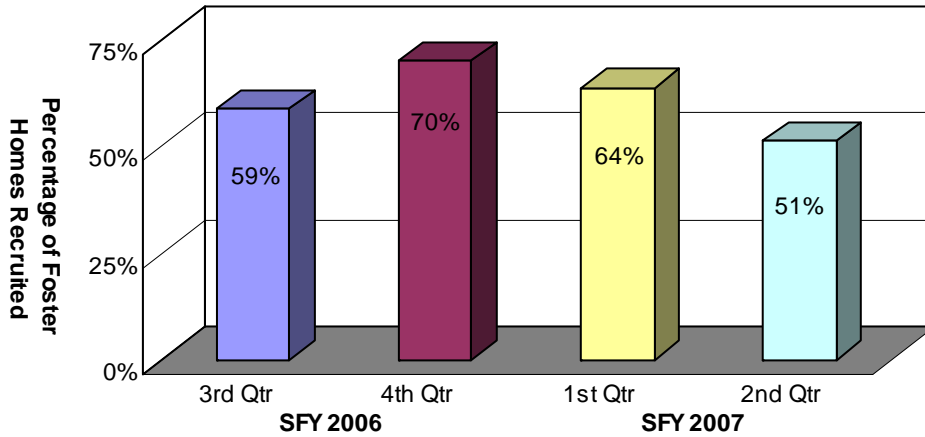
Chart 13: Comprehensive Health Assessments



Foster Home Recruitment

DCFS recruited 41 new foster homes during the second quarter, fewer than the goal of 80 new homes. The 51 percent compliance rate was lower than the previous quarter (64%).

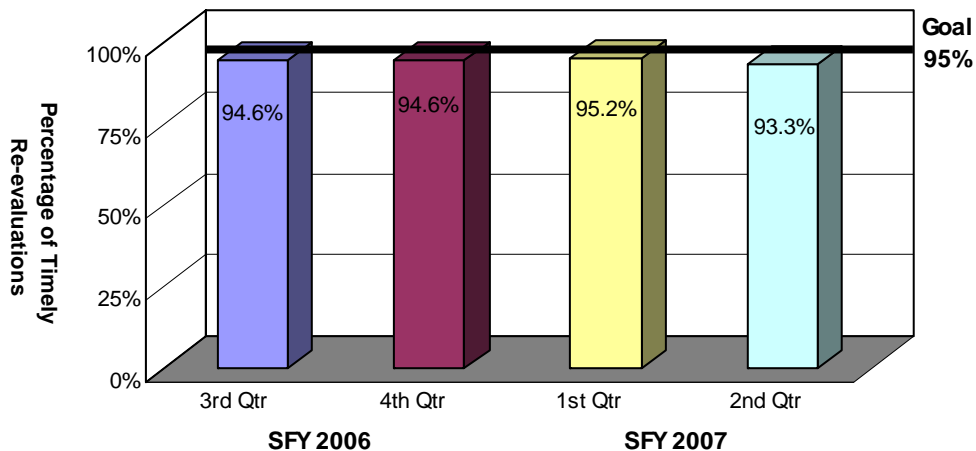
Chart 14: Foster Home Recruitment



Foster Home Re-evaluations

On an annual basis, at a minimum, DCFS conducts required re-evaluations of each foster home’s ability to care for children. Of DHHS’ 1,022 active foster homes during the second quarter, staff completed current re-evaluations for 954 homes. The resulting 93.3 percent compliance rate was lower than the previous quarter and below the goal of 95 percent compliance.

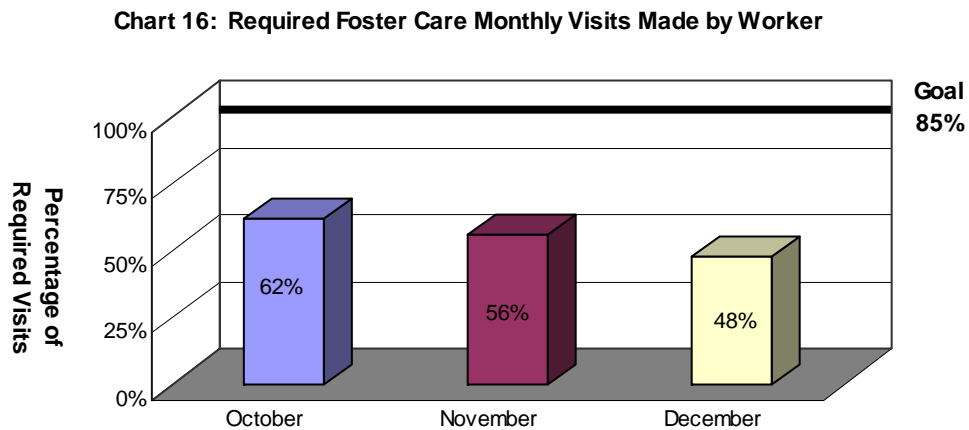
Chart 15: Foster Home Re-evaluations



Required Visits Made by Worker

DCFS acknowledges the importance of worker contact with children in foster care and believes that these visits should be in the home as often as possible. However, DCFS also recognizes that face-to-face visits in other locations can also meet good practice objectives. Consequently, the measurement of required monthly visits with children in care considers face-to-face visits in any setting as compliant.

During the second quarter, the percentage of children who received a visit during the quarter averaged 56 percent from October to December. (See plan of action in the Executive Summary.)



PART III: DESCRIPTION OF POPULATION AND SERVICES

This section describes the number and status of maltreatment assessments; children who were served in foster care; and children who were provided adoption services.

Section I outlines characteristics of children in true maltreatment reports such as age, gender and ethnicity, and specifically compares state ethnicity data to national data. Additionally, this section defines the types of allegations in maltreatment reports.

Section II describes the foster care population. Specifically, it describes the characteristics of children in foster care; entries and exits of children in foster care; reasons children come into care; lengths of stay for children in foster care as well as children in relative care; placements of children in foster care; and the number of placements children experience while in care.

Section III reports adoption data such as the characteristics of children available for adoption; current placement of those children; characteristics of children placed in adoptive homes; children whose parents have terminated their parental rights but have not been placed in adoptive homes; finalized adoptions; and adoption subsidies.

Part III: Description of Population and Services

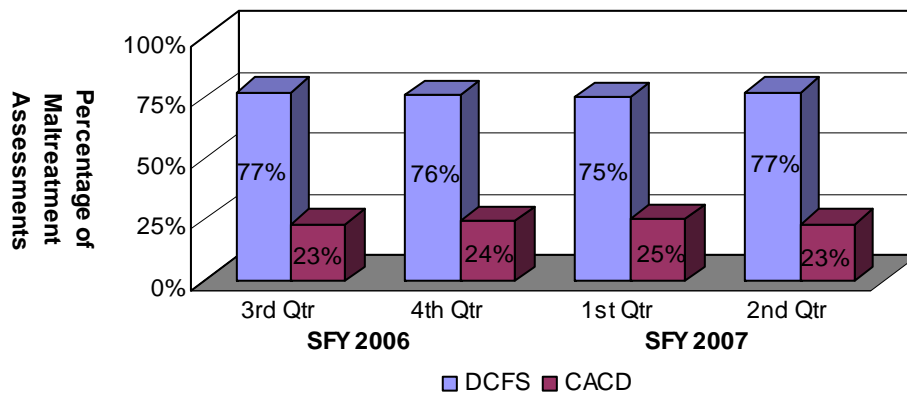
Section I: True Child Maltreatment Reports

Child Maltreatment Assessments

During the second quarter, 6,738 maltreatment assessments were assigned between DCFS and CACD. Of those, 5,202 were assigned to DCFS (77%). This figure represented an increase in the number of assessments assigned to DCFS from the previous quarter (4,531), and an increase in the number assigned from the same quarter ending one year ago (4,827).

Of those same 6,738 assessments, 1,536 were assigned to CACD (23%). This figure represented an increase in the number of assessments assigned to CACD from the previous quarter (1,527), and an increase in the number assigned from the same quarter ending one year ago (1,458).

Chart 17a: Child Maltreatment Assessments



Of the 6,738 maltreatment assessments assigned during the second quarter of the SFY 2007, 1,595 reports (24%) were found to be true, which was two percentage points higher than the same quarter one year ago (22%). The national percentage is 26 percent⁴. There were 2,317 victim children involved in the 1,595 true reports during the quarter, which represented an increase in the victim children during the same quarter one year ago (2,008).

Table 2: Child Maltreatment Assessments

	Total Assessments	True Assessments	Percent True
3rd Qtr SFY 2006	5,883	1,389	24%
4th Qtr SFY 2006	7,124	1,666	23%
1st Qtr SFY 2007	6,058	1,502	25%
2nd Qtr SFY 2007	6,738	1,595	24%

⁴ Source: Child Maltreatment 2004, Reports from the States to the National Child Abuse and Neglect Data System, U.S. Department of Health and Human Services, Administration for Children and Families, Administration on Children, Youth and Families, Children's Bureau.

Characteristics of Children in True Maltreatment Reports

As referenced previously, 2,317 victim children were involved in true reports during the second quarter. The table below outlines the demographic information for the victim children during the quarter⁵.

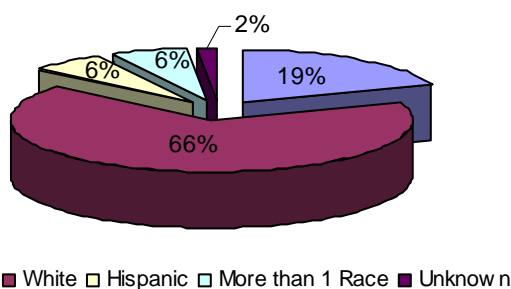
**Table 3: Characteristics of Children in True Maltreatment Reports
2nd Quarter SFY 2007**

Age	Gender	White	Black	Asian	AIAN	NAPI	Hispanic	More Than 1 Race	Total
0 to 1	Female	100	42	0	0	0	7	12	161
	Male	84	35	0	1	0	11	15	146
2 to 5	Female	180	42	1	0	2	15	19	259
	Male	176	40	0	1	3	14	15	249
6 to 11	Female	259	68	1	3	1	30	27	389
	Male	218	79	0	1	0	20	19	337
12 to 15	Female	245	64	1	0	0	30	9	349
	Male	111	43	1	0	0	7	10	172
16 to 18	Female	105	22	0	0	0	6	9	142
	Male	52	12	0	0	0	1	6	71
18+	Female	2	0	0	0	0	0	0	2
	Male	0	1	0	0	0	0	0	1
Total*		1,532	448	6	6	6	141	141	2,278

*Demographic data had not been entered into CHRIS for 39 children.

Of the children involved in true maltreatment reports, 66 percent were white and 19 percent were black.

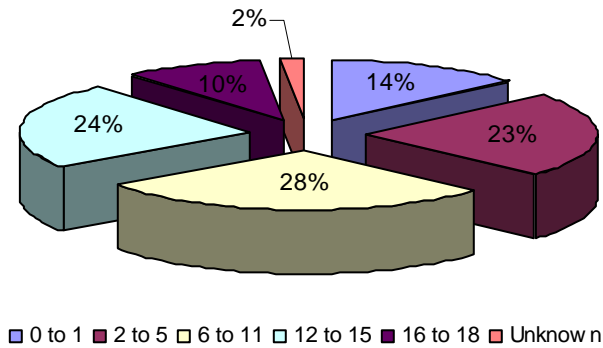
Chart 17a: Ethnicity of Children in True Reports



⁵ Table three, and each subsequent demographic table, divides up “other” races and ethnicities into the following categories: “Hispanic,” “More than One Race,” “Asian” (includes Indonesian, Cambodian, Hmong and Vietnamese), “AIAN” (includes Native American, Alaskan Native and American Indian) and “NAPI” (includes Native Hawaiian and other Pacific Islanders).

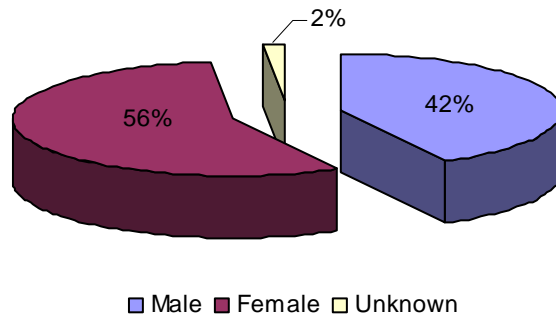
Children between the ages of 6 and 11 represented the largest group of children involved in true maltreatment reports (28%). These percentages were similar to the previous quarter.

Chart 17b: Ages of Children in True Reports



More female children (56%) than male children (42%) were involved in true maltreatment reports. These percentages were also similar to the previous quarter.

Chart 17c: Gender of Children in True Reports



Children Involved in Allegations of True Maltreatment Reports

During the quarter, the majority of the 2,317 children involved in true maltreatment reports were involved in neglect allegations (66%), followed by sexual abuse allegations (25%) and physical abuse allegations (21%)⁶.

**Table 4: Percentage of Children Involved in True Allegations of Maltreatment
1st Quarter SFY 2007 – 2nd Quarter SFY 2007**

	1st Quarter		2 nd Quarter	
Neglect	1,287	60%	1,535	66%
Physical Abuse	473	22%	481	21%
Sexual Abuse	683	32%	581	25%

⁶ The total number of children represented will outnumber the total children involved in true maltreatment reports because a child can be involved in more than one allegation. Therefore, the sum of percentages of children involved in maltreatment reports will be greater than 100 percent.

Part III: Description of Population and Services

Section II: Foster Care

Characteristics of Children in Foster Care

During the quarter, there were 4,511 children were in foster care. This number includes children who remained in care from previous quarters as well as children who came into care during the quarter. The following table outlines the characteristics of children who were in care during the quarter.

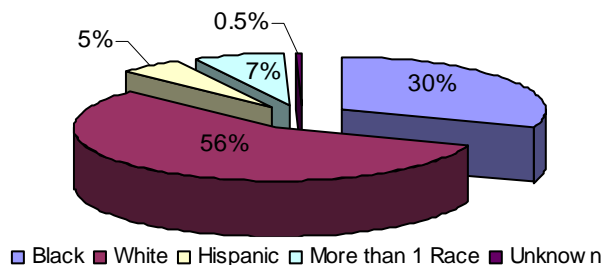
**Table 5: Characteristics of Children in Foster Care During the Quarter
2nd Quarter SFY 2007**

Age	Gender	White	Black	Asian	AIAN	NAPI	Hispanic	More Than 1 Race	Total
0 to 1	Female	182	84	1	0	1	15	21	304
	Male	155	93	0	1	0	18	15	282
2 to 5	Female	274	148	2	1	1	37	39	502
	Male	288	152	0	4	2	41	45	532
6 to 11	Female	311	164	1	0	0	28	42	546
	Male	340	170	1	2	0	34	39	586
12 to 15	Female	286	149	1	1	0	19	32	488
	Male	248	134	1	2	0	13	39	437
16 to 18	Female	202	103	2	0	0	11	20	338
	Male	153	85	0	0	1	9	18	266
18+	Female	61	42	0	0	0	1	11	115
	Male	44	38	1	1	0	4	5	93
Total*		2,544	1,362	10	12	5	230	326	4,489

*Demographic information had not been entered into CHRIS for 22 children.

The chart below shows that 56 percent of the children in foster care during the quarter were white and 30 percent were black. National data reveal that only 40 percent of the children in the national foster care system were white, while 34 percent of the children were black⁷.

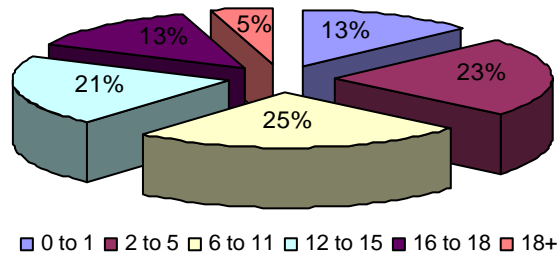
**Chart 18a: Ethnicity of Children in Care
During the Quarter**



⁷ Adoption and Foster Care Analysis and Reporting System (AFCARS) data submitted for children in foster care between 10/01/2003 and 9/30/2004 as of June 2006.

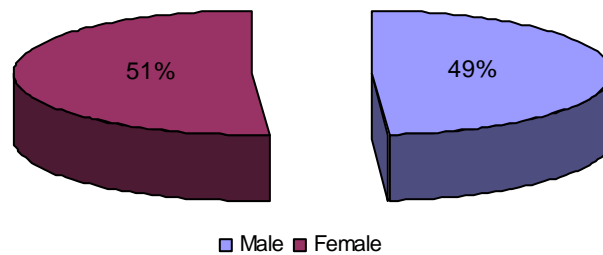
The following chart shows that children between the ages of 6 and 11 represented the largest group of children who were in care during the quarter (25%). These percentages were similar to those of the previous quarter.

Chart 18b: Ages of Children in Foster Care During the Quarter



The following chart shows that 51 percent of the children in foster care during the quarter were female and 49 percent were male. These percentages were also similar to the previous quarter.

Chart 18c: Gender of Children in Foster Care During the Quarter



At the end of the quarter, there were 3,672 children in foster care, an increase from the 3,559 children in care at the end of the second quarter. The following table outlines the characteristics of the children in foster care at the end of the second quarter.

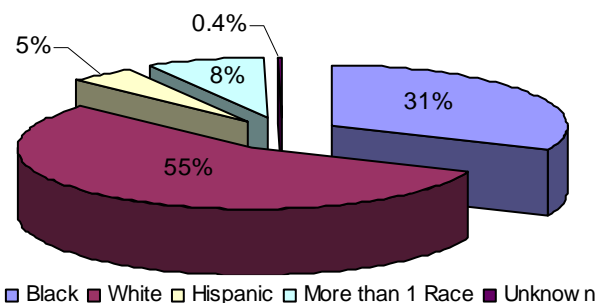
**Table 6: Characteristics of Children in Foster Care at the End of the Quarter
2nd Quarter SFY 2007**

Age	Gender	White	Black	Asian	AIAN	NAPI	Hispanic	More Than 1 Race	Total
0 to 1	Female	133	71	1	0	1	12	14	232
	Male	121	82	0	1	0	13	11	228
2 to 5	Female	218	126	2	0	0	27	35	408
	Male	231	128	0	3	1	33	37	433
6 to 11	Female	244	127	0	0	0	24	39	434
	Male	263	140	0	2	0	27	38	470
12 to 15	Female	234	124	0	1	0	11	30	400
	Male	207	113	0	1	0	9	38	368
16 to 18	Female	172	90	2	0	0	11	18	293
	Male	135	76	0	0	1	7	15	234
18+	Female	41	35	0	0	0	1	8	85
	Male	33	33	1	1	0	2	4	74
Total*		2,032	1,145	6	9	3	177	287	3,659

*Demographic information had not been entered into CHRIS for 13 children.

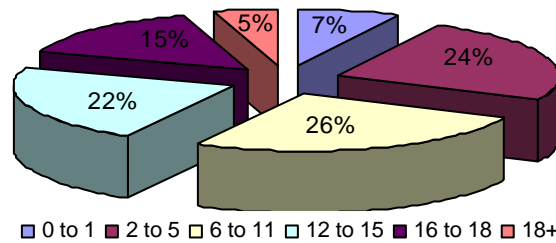
The chart below shows that 55 percent of the children in foster care at the end of the quarter were white, while 31 percent of the children were black. These percentages were consistent with the previous four quarters.

Chart 19a: Ethnicity of Children in Foster Care at the End of the Quarter



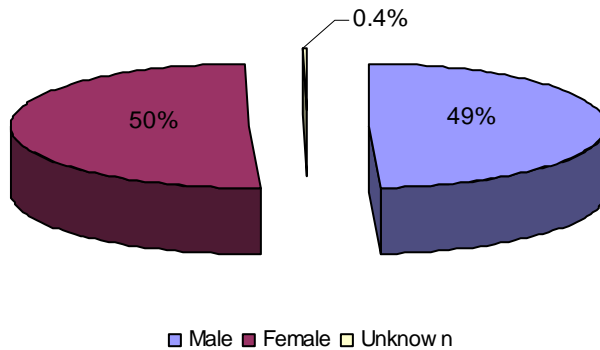
The following chart shows that children between the ages of 6 and 11 represented the largest group of children who were in care at the end of the quarter (26%).

Chart 19b: Ages of Children in Foster Care at the End of the Quarter



The following chart shows that 50 percent of the children in foster care at the end of the quarter were female and 49 percent were male. These percentages were also similar to the previous quarter.

Chart 19c: Gender of Children in Foster Care at the End of the Quarter



Entries into Foster Care

The data show that 1,029 children entered foster care during the second quarter, a decrease from the first quarter (1,080).

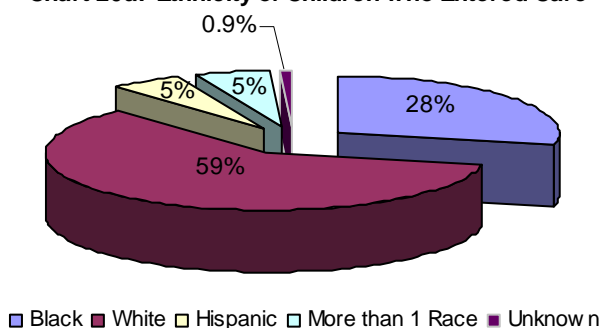
**Table 7: Characteristics of Children Entering Foster Care During the Quarter
2nd Quarter SFY 2007**

Age	Gender	White	Black	Asian	AIAN	NAPI	Hispanic	More Than 1 Race	Total
0 to 1	Female	76	29	0	0	1	7	6	119
	Male	53	26	0	0	0	7	5	91
2 to 5	Female	65	27	0	0	1	7	11	111
	Male	66	31	0	1	2	9	8	117
6 to 11	Female	75	40	0	0	0	3	7	125
	Male	73	40	0	0	0	6	5	124
12 to 15	Female	79	35	1	0	0	9	3	127
	Male	53	25	1	0	0	3	5	87
16 to 18	Female	51	23	0	0	0	4	2	80
	Male	21	13	0	0	1	1	3	39
Total*		612	289	2	1	5	56	55	1,020

*Demographic data had not been entered into CHRIS for nine children.

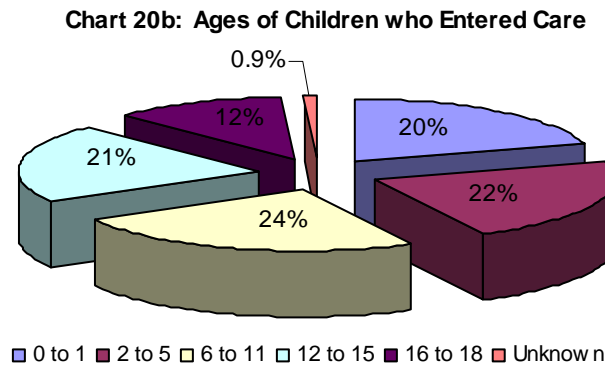
The chart below shows that 59 percent of the children who entered foster care during the quarter were white, while 28 percent of the children were black. National data indicate that 46 percent of the children who entered care were white, 27 percent were black and 18 percent were Hispanic⁸.

Chart 20a: Ethnicity of Children who Entered Care

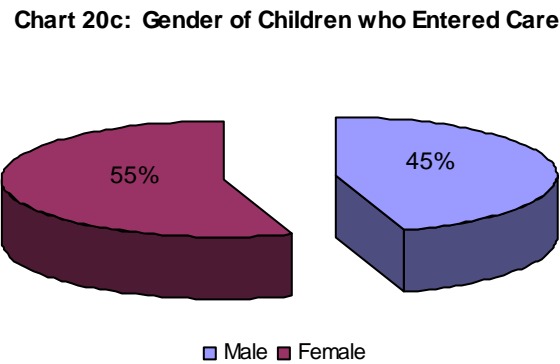


⁸ Adoption and Foster Care Analysis and Reporting System (AFCARS) data submitted for children in foster care between 10/01/2003 and 9/30/2004 as of June 2006.

The following chart shows that children between the ages of six and eleven represented the largest group of children who entered foster care during the quarter (24%).



The following chart shows the gender of the children who entered foster care during the second quarter. Of the 1,029 children who entered care, 55 percent of the children were female and 45 percent were male.



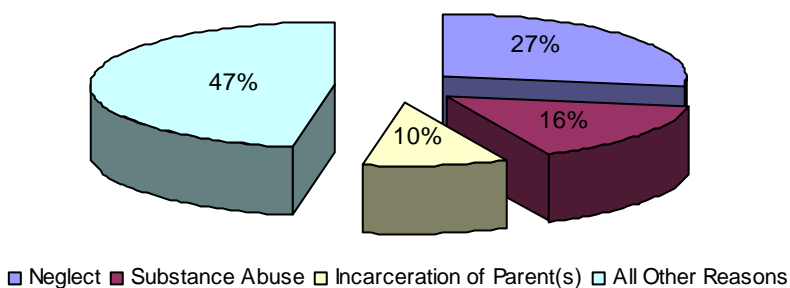
The reasons for entry into foster care during the quarter (Table 8) remained very similar to the reasons for children’s entry into care at the end of the quarter (Table 9). Neglect and substance abuse⁹ were the most prevalent reasons children entered care.

**Table 8: Reasons Children were Placed in Foster Care During the Quarter by Age
2nd Quarter SFY 2007**

	0 to 1	2 to 5	6 to 11	12 to 15	16 to 18	18+	Total
Neglect	389	561	659	423	114	0	2,166
Substance Abuse	330	284	293	277	73	0	1,257
Parent Incarceration	158	213	222	144	33	0	770
Physical Abuse	142	166	211	166	66	0	751
Child’s Behavior	1	29	100	251	103	0	473
Abandonment	42	59	95	108	50	0	354
Inadequate Housing	120	167	207	128	30	0	652
Caretaker Illness	78	110	137	150	55	0	530
Sexual Abuse	27	84	158	165	43	0	468
Truancy	6	21	44	67	31	0	147
Child’s Disability	12	6	21	14	3	0	56
Parent Death	3	5	15	15	7	0	45
Sex Offender	3	6	7	21	9	0	46
Relinquishment	6	2	5	12	1	0	26
Adoption	0	0	0	2	0	0	2
Managed Mental Health	0	0	2	3	1	0	6
Other	3	4	30	13	2	0	52
Teen Parent in Care	62	5	0	1	3	0	71
Total*	1,382	1,722	2,206	1,960	624	0	7,894

*There are more reasons for entry than children in care because a child may have more than one reason for entry.

**Chart 21: Reasons Children in Care During the Quarter
were Placed in Foster Care**



⁹ Of the 1,257 reasons for entry attributed to substance abuse, substance abuse by children accounted for 109 reasons for entry (9%), while substance abuse by parents accounted for 1,148 reasons for entry (91%).

**Table 9: Reasons Children in Foster Care at the End of the Quarter were Placed in Care
2nd Quarter SFY 2007**

	Gender	White	Black	Asian	AIAN	NAPI	Hispanic	More Than 1 Race	Total
Neglect	<i>Female</i>	508	236	1	0	0	51	73	869
	<i>Male</i>	524	253	0	4	1	49	58	889
Substance Abuse	<i>Female</i>	343	145	3	0	0	17	29	537
	<i>Male</i>	278	148	0	6	0	19	36	487
Parent Incarceration	<i>Female</i>	174	89	0	1	1	24	38	327
	<i>Male</i>	180	76	0	4	1	27	26	314
Physical Abuse	<i>Female</i>	151	108	0	0	1	13	20	293
	<i>Male</i>	171	87	0	0	1	16	16	291
Child's Behavior	<i>Female</i>	124	60	1	0	0	6	18	209
	<i>Male</i>	123	59	1	0	0	5	17	205
Abandonment	<i>Female</i>	80	55	0	0	0	8	9	152
	<i>Male</i>	70	73	0	0	0	5	13	161
Inadequate Housing	<i>Female</i>	149	81	0	0	0	18	25	273
	<i>Male</i>	162	91	0	2	0	11	24	290
Caretaker Illness	<i>Female</i>	153	50	0	0	0	10	20	233
	<i>Male</i>	138	57	0	3	0	10	17	225
Sexual Abuse	<i>Female</i>	170	80	1	0	0	8	23	282
	<i>Male</i>	78	25	0	0	0	7	8	118
Truancy	<i>Female</i>	46	23	0	0	0	3	4	76
	<i>Male</i>	33	17	0	0	0	1	4	55
Child's Disability	<i>Female</i>	18	8	0	0	0	0	0	26
	<i>Male</i>	20	5	0	0	0	2	1	28
Parent Death	<i>Female</i>	5	8	0	0	0	0	2	15
	<i>Male</i>	8	5	0	0	0	0	7	20
Sex Offender	<i>Female</i>	9	2	0	0	0	0	1	12
	<i>Male</i>	22	5	0	1	0	1	1	30
Relinquishment	<i>Female</i>	5	3	1	0	0	0	1	10
	<i>Male</i>	10	3	0	0	0	0	2	15
Managed Mental Health	<i>Female</i>	1	0	0	0	0	0	0	1
	<i>Male</i>	2	1	0	0	0	0	0	3
Adoption	<i>Female</i>	0	1	0	0	0	0	0	1
	<i>Male</i>	1	0	0	0	0	0	0	1
Teen Parent in Care	<i>Female</i>	11	21	0	0	0	5	4	41
	<i>Male</i>	8	14	0	0	0	3	0	25
Other	<i>Female</i>	10	7	0	0	0	0	1	18
	<i>Male</i>	9	15	0	0	0	0	2	26
Total*		3,794	1,911	8	21	5	319	500	6,558

*There are more reasons for entry than children in care because a child may have more than one reason for entry.

Exits from Foster Care

During the quarter, 883 children left foster care, which was a decrease from the previous quarter (918).

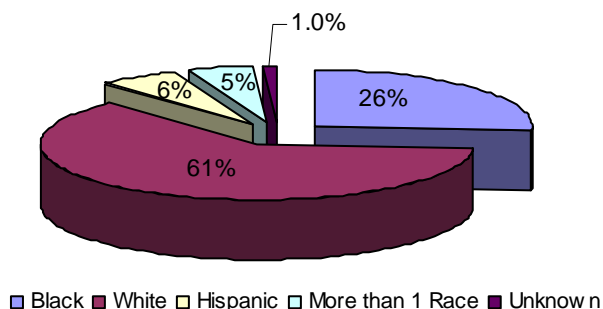
**Table 10: Characteristics of Children Exiting Foster Care During the Quarter
2nd Quarter SFY 2007**

Age	Gender	White	Black	Asian	AIAN	NAPI	Hispanic	More Than 1 Race	Total
0 to 1	Female	50	14	0	0	0	3	7	74
	Male	37	11	0	0	0	5	4	57
2 to 5	Female	59	22	0	1	1	10	6	99
	Male	59	25	0	1	1	8	8	102
6 to 11	Female	70	39	1	0	0	4	3	117
	Male	84	31	1	0	0	7	1	124
12 to 15	Female	57	26	1	0	0	8	2	94
	Male	43	22	1	1	0	4	1	72
16 to 18	Female	43	21	0	0	0	1	5	70
	Male	28	17	0	0	0	3	4	52
18+	Female	8	0	0	0	0	0	0	8
	Male	2	2	0	0	0	1	0	5
Total*		540	230	4	3	2	54	41	874

*Demographic data had not been entered into CHRIS for nine children.

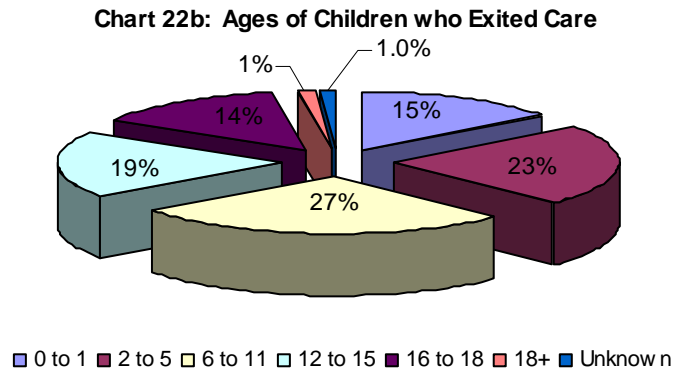
Of the 883 children who left foster care, 61 percent were white and 26 percent were black. National data indicate that 45 percent of the children who left foster care were white and 29 percent were black¹⁰. During the same quarter one year ago, 58 percent of the children who exited foster care were white, whereas 28 percent were black.

Chart 22a: Ethnicity of Children who Exited Care

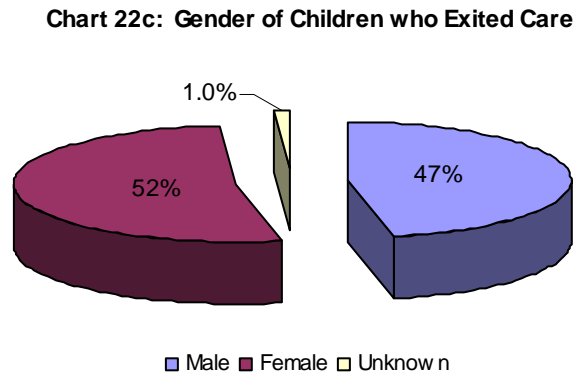


¹⁰ Adoption and Foster Care Analysis and Reporting System (AFCARS) data submitted for children in foster care between 10/01/2003 and 9/30/2004 as of June 2006.

The following chart shows that children between the ages 6 and 11 (27%) and those between 2 and 5 (23%) represented the largest groups of children who left foster care during the quarter.



Of the children who left care during the quarter, 52 percent were female and 47 percent were male.



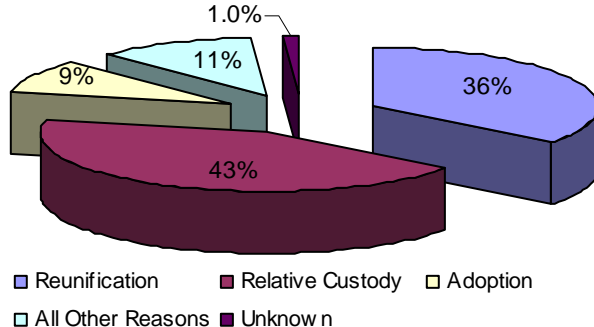
**Table 11: Reasons Children Exited Foster Care by Age
2nd Quarter SFY 2007**

Reason	Age						Total
	0 to 1	2 to 5	6 to 11	12 to 15	16 to 18	18+	
Reunification	59	62	97	65	32	0	315
Relative Custody	58	90	108	82	40	0	378
Adoption	7	40	24	7	2	0	80
Child Aged Out	0	0	0	0	40	10	50
Non-Relative Custody	7	7	12	8	4	1	39
Custody Transfer	0	0	0	4	0	1	5
Emancipation	0	0	0	0	4	1	5
Tribal Jurisdiction	0	2	0	0	0	0	2
Total*	131	201	241	166	122	13	874

*Demographic data had not been entered into CHRIS for nine children.

The most prevalent reason that children left foster care during the quarter was relative custody (43%). The second most prevalent reason was reunification (36%). National data indicate that the three most prevalent reasons children left care were reunification (54%), adoption (18%) and relative care (12%)¹¹.

Chart 23: Most Prevalent Reasons Children Left Care



¹¹ Adoption and Foster Care Analysis and Reporting System (AFCARS) data submitted for children in foster care between 10/01/2003 and 9/30/2004 as of June 2006.

Permanency Goals of Children in Foster Care

The Division maintains two primary goals for children in foster care: safety and permanency. The second of these concerns is expressed by setting a permanency goal for each child in foster care. For the second quarter, returning home remained the most prevalent goal among children in foster care at 45 percent. National data reveal very similar figures to the numbers shown here¹².

**Table 12: Permanency Goals of Children in Foster Care
1st Quarter SFY 2007 – 2nd Quarter SFY 2007**

	1st Quarter		2nd Quarter		National
Return Home	1,690	47%	1,655	45%	49%
Adoption	801	23%	730	20%	20%
Independence	530	15%	481	13%	n/a
Remain at Home	144	4%	251	7%	n/a
Relative Care	126	4%	124	3%	4%
Guardianship	12	.3%	15	.4%	3%
Emancipation	1	.03%	1	.03%	6%
Long Term Care	0	0%	0	0%	8%
Not Yet Established	255	7%	415	11%	9%
Total*	3,559	100%	3,672	100%	100%

*Sum of individual percentages may not equal 100% due to rounding.

¹² Adoption and Foster Care Analysis and reporting System (AFCARS) data submitted for the FY 2004 (10/01/03 to 9/30/04) as of June 2006.

Length of Stay of Children in Foster Care

For the 4,511 children in foster care during the quarter, 54 percent were in care less than one year. A comparison to national data indicates that children in the state’s foster care system remain in care a decidedly shorter amount of time¹³.

**Table 13a: Length of Stay of Children in Foster Care (Including Relative Care)
2nd Quarter SFY 2007**

	Number	Percentage	National
Less than 30 days	525	12%	5%
30-90 Days	630	14%	18%
3-6 Months	546	12%	
6-12 Months	753	17%	17%
12-24 Months	869	19%	21%
24-36 Months	443	10%	12%
36+ Months	745	17%	27%
Total*	4,511	100%	100%

*Sum of individual percentages may not equal 100% due to rounding.

**Table 13b: Length of Stay of Children in Relative Care
2nd Quarter SFY 2007**

	Number	Percentage*
Less than 30 days	13	3%
30-90 Days	51	13%
3-6 Months	63	16%
6-12 Months	63	16%
12-24 Months	129	32%
24-36 Months	30	7%
36+ Months	52	13%
Total	401	100%

*Sum of individual percentages may not equal 100% due to rounding.

**Table 13c: Length of Stay of Children in Foster Care (Excluding Relative Care)
2nd Quarter SFY 2007**

	Number	Percentage*
Less than 30 days	512	12%
30-90 Days	579	14%
3-6 Months	483	12%
6-12 Months	690	17%
12-24 Months	740	18%
24-36 Months	413	10%
36+ Months	693	17%
Total	4,110	100%

*Sum of individual percentages may not equal 100% due to rounding.

¹³ Adoption and Foster Care Analysis and reporting System (AFCARS) data submitted for the FY 2004 (10/01/03 to 9/30/04) as of June 2006.

Number of Placements of Children in Foster Care

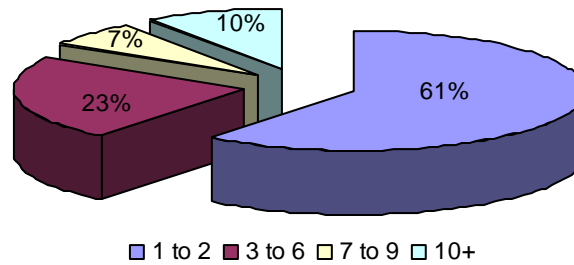
For the second quarter, 61 percent of the children in care at the quarter’s end experienced two or fewer placements, which was the same as the previous quarter.

**Table 14: Number of Placements of Children in Foster Care
1st Quarter SFY 2007 – 2nd Quarter SFY 2007**

	1st Quarter		2nd Quarter	
1-2 Placements	2,165	61%	2,228	61%
3-6 Placements	837	24%	841	23%
7-9 Placements	223	6%	246	7%
10+ Placements	334	9%	357	10%
Total	3,559	100%	3,672	100%

*Sum of individual percentages may not equal 100% due to rounding.

Chart 24: Number of Placements for Children in Care at the End of the Quarter



Characteristics of Children who Experienced Two or More Placements

At the end of the second quarter, 3,672 children were in foster care. Of those, 1,986 children experienced two or more placements while in care.

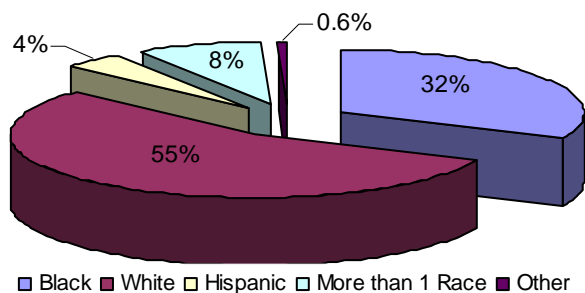
**Table 15: Characteristics of Children who Experienced Two or More Placements
2nd Quarter SFY 2007**

Age	Gender	White	Black	Asian	AIAN	NAPI	Hispanic	More Than 1 Race	Total
0 to 1	Female	18	20	0	0	1	4	8	51
	Male	32	17	0	1	0	2	4	56
2 to 5	Female	78	43	0	0	0	9	11	141
	Male	109	48	0	2	0	15	14	188
6 to 11	Female	129	67	0	0	0	11	20	227
	Male	169	83	0	2	0	16	27	297
12 to 15	Female	148	86	0	1	0	5	24	264
	Male	145	80	0	0	0	5	28	258
16 to 18	Female	142	95	1	0	0	7	19	264
	Male	125	89	1	1	1	8	13	238
18+	Female	0	0	0	0	0	0	0	0
	Male	0	0	0	0	0	0	0	0
Total		1,095	628	2	7	2	82	168	1,984

*Demographic data had not been entered into CHRIS for two children.

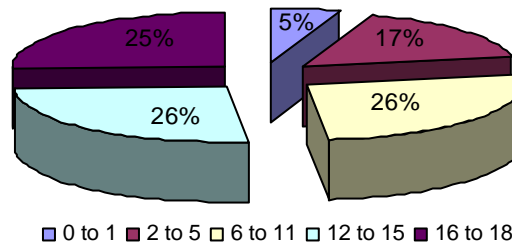
Of the 1,986 children who experienced two or more placements, 55 percent were white and 32 percent were black. These percentages were similar to the previous quarter.

Chart 25a: Ethnicity of Children who Experienced Two or More Placements



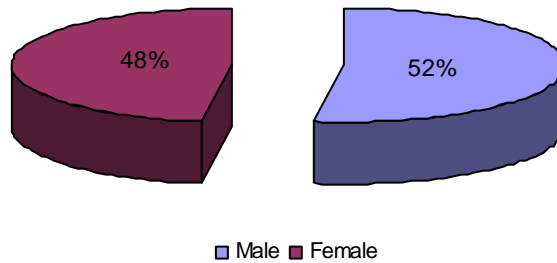
Children between the ages of 6 to 11 (27%) and 12 to 15 (25%) represented the largest groups of children who experienced two or more placements.

Chart 25b: Ages of Children who Experienced Two or More Placements



More male children (52%) than female children (48%) experienced two or more placements, similar to the previous quarter.

Chart 25c: Gender of Children who Experienced Two or More Placements



Current Placement of Children in Foster Care

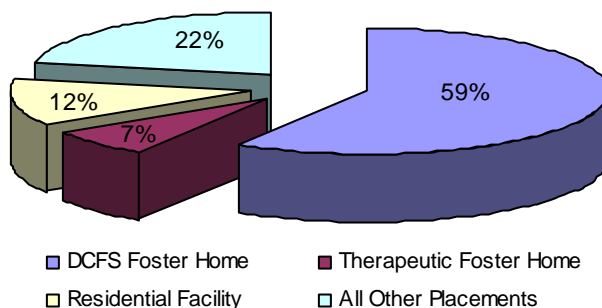
More foster children were placed in DCFS foster homes (59%) at the end of the second quarter than in any other type of foster care placement.

Table 16: Current Placement of Children in Foster Care at the End of the Quarter

Placement	Age						Total
	0 to 1	2 to 5	6 to 11	12 to 15	16 to 18	Over 18	
DCFS Foster Home	378	679	511	338	206	50	2,162
Relative Care	24	40	35	18	6	3	126
Therapeutic Foster Home	1	25	122	62	36	8	254
Pre-Adoptive Home	11	32	50	10	3	0	106
Emergency Shelter	2	8	23	48	35	0	116
Residential Facility	14	16	88	169	119	37	443
Youth Services	0	0	0	4	21	2	27
Runaway	1	2	0	22	43	9	77
Trial Home Visit	23	34	46	36	15	1	155
Hospital/Medical	5	1	19	32	14	0	71
Sexual Offender Treatment	0	0	1	13	8	0	22
Independent Living	0	0	0	2	6	48	56
Incarceration	0	0	0	10	12	1	23
Temporary Placement	3	9	10	4	2	1	29
Unknown*	3	1	0	0	1	0	5
Total	465	847	905	768	527	160	3,672

*Unknown due to data entry after data were collected for the report.

Chart 26: Current Placement of Children in Foster Care



Characteristics of Children on Runaway Status at the End of the Quarter

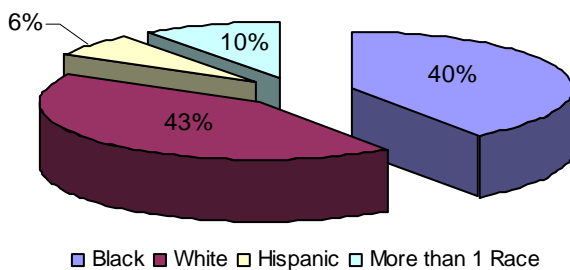
Seventy-seven children were on runaway status at the end of the second quarter. This number represented an increase from the previous quarter (73).

**Table 17: Characteristics of Children on Runaway Status at the End of the Quarter
2nd Quarter SFY 2007**

Age	Gender	White	Black	Asian	AIAN	NAPI	Hispanic	More Than 1 Race	Total
0 to 1	Female	0	0	0	0	0	0	0	0
	Male	1	1	0	0	0	0	0	1
2 to 5	Female	1	0	0	0	0	0	0	1
	Male	0	1	0	0	0	0	0	1
6 to 11	Female	0	0	0	0	0	0	0	0
	Male	0	0	0	0	0	0	0	0
12 to 15	Female	9	5	0	0	0	0	0	14
	Male	4	1	0	0	0	2	1	8
16 to 18	Female	11	10	0	0	0	1	5	27
	Male	4	10	0	0	0	1	1	16
18+	Female	3	1	0	0	0	0	1	5
	Male	1	2	0	0	0	1	0	4
Total		33	31	0	0	0	5	8	77

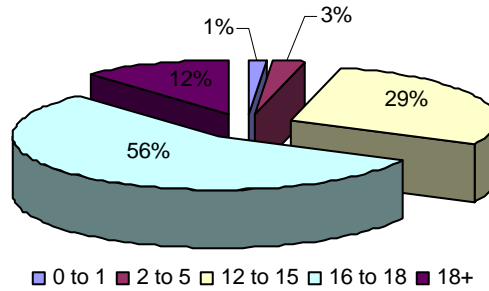
Of the children on runaway status at the end of the quarter, 43 percent were white and 40 percent were black. This was different to the children on runaway state at the end of the first quarter when 42 percent were white and 45 percent were black.

Chart 27a: Ethnicity of Children on Runaway Status at the End of the Quarter



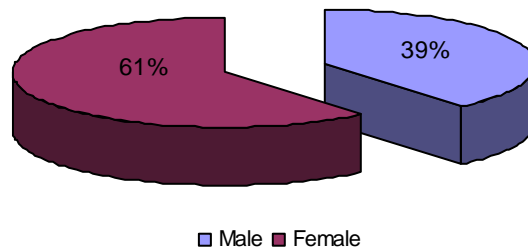
At the end of the quarter, 56 percent of the children on runaway status were between the ages of 16 and 18, which was an eleven percentage point decrease over the previous quarter.

Chart 27b: Ages of Children on Runaway Status at the End of the Quarter



More female children (61%) than male children (39%) were on runaway status at the end of the quarter.

Chart 27c: Gender of Children on Runaway Status at the End of the Quarter



Characteristics of Children in Relative Care

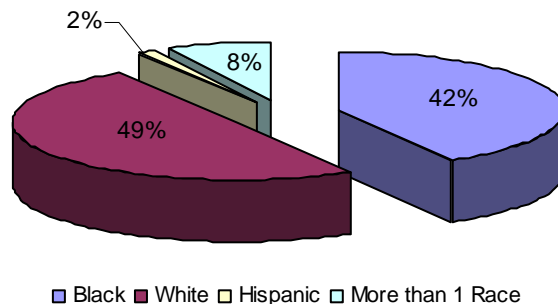
During the second quarter, 401 children were in relative care, an increase from the previous quarter (364). This number includes children who remained in relative care from previous quarters as well as children who came into relative care during the quarter. The following table outlines the characteristics of children in relative care.

**Table 18: Characteristics of Children in Relative Care
2nd Quarter SFY 2007**

Age	Gender	White	Black	Asian	AIAN	NAPI	Hispanic	More Than 1 Race	Total
0 to 1	Female	17	13	0	0	0	0	3	33
	Male	15	9	0	0	0	1	0	25
2 to 5	Female	34	17	0	0	0	4	2	57
	Male	25	30	0	0	0	1	3	60
6 to 11	Female	28	30	0	0	0	0	8	66
	Male	24	25	0	0	0	0	5	54
12 to 15	Female	14	16	0	0	0	0	3	33
	Male	14	12	0	0	0	0	4	30
16 to 18	Female	19	10	1	0	0	0	1	31
	Male	5	3	0	0	0	0	1	9
Over 18	Female	2	1	0	0	0	0	0	3
	Male	0	0	0	0	0	0	0	0
Total		197	166	1	0	0	6	30	401

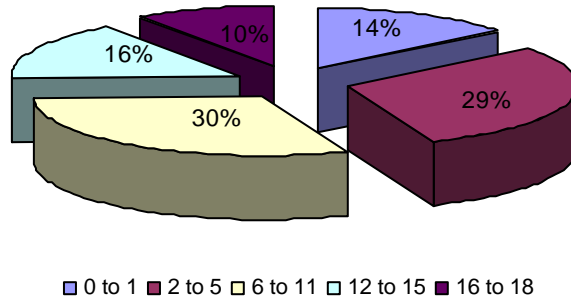
White children represented the highest percentage of children in relative care for the second quarter at 49 percent, lower than the previous quarter. Over the past year, the number of white children in relative care decreased quarterly from 59 percent to 49 percent, and the number of black children increased from 22 percent to 42 percent.

Chart 28a: Ethnicity of Children in Relative Care



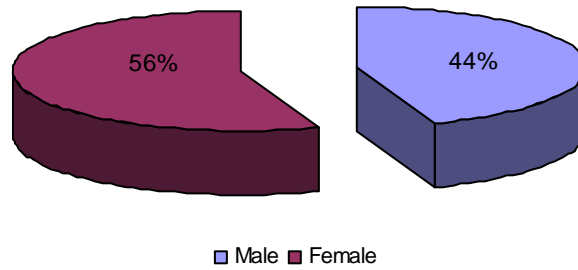
Children between the ages of 6 and 11 (30%) represented the largest age group of children in relative care, followed by children between the ages of 2 and 5 (29%).

Chart 28b: Ages of Children in Relative Care



Of the 401 children in relative care during the quarter, 56 percent were female and 44 percent were male, which were similar to the previous quarter.

Chart 28c: Gender of Children in Relative Care



Part III: Description of Population and Services
Section III: Adoption

Characteristics of Children with a Permanency Goal of Adoption During the Quarter

There were 866 children with a permanency goal of adoption during the quarter. This was an increase from the previous quarter (861). The table below outlines those children’s characteristics.

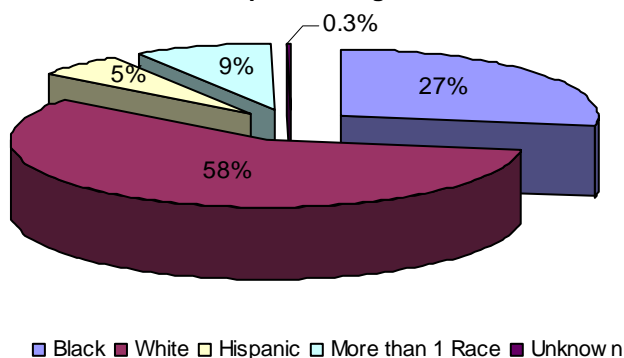
**Table 19: Characteristics of Children with a Permanency Goal of Adoption During the Quarter
 2nd Quarter SFY 2007**

Age	Gender	White	Black	Asian	AIAN	NAPI	Hispanic	More Than 1 Race	Total
0 to 1	Female	23	12	1	0	0	0	1	37
	Male	20	10	0	0	0	1	2	33
2 to 5	Female	60	33	0	0	0	6	11	110
	Male	75	33	0	0	0	11	16	135
6 to 11	Female	82	29	0	0	0	9	15	135
	Male	94	40	0	0	0	11	10	155
12 to 15	Female	51	35	0	1	0	1	11	99
	Male	60	35	0	0	0	7	8	110
16 to 18	Female	23	2	0	0	0	0	0	25
	Male	16	7	0	0	0	0	1	24
Total		504	236	1	1	0	46	75	863

*Demographic data had not been entered into CHRIS for three children.

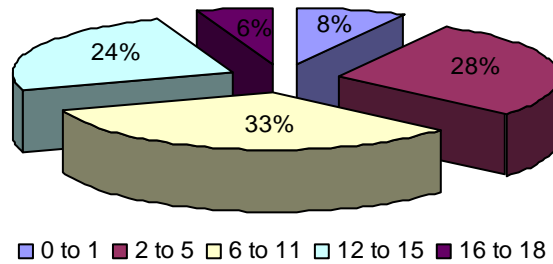
Of the 866 children with a permanency goal of adoption during the quarter, 58 percent were white, 27 percent were black and 5 percent were Hispanic. These numbers were similar to the previous quarter.

Chart 29a: Ethnicity of Children with a Permanency Goal of Adoption During the Quarter



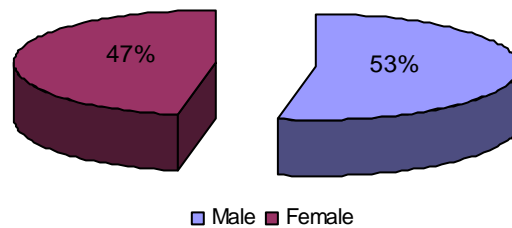
Children between the ages of 6 and 11 (33%) represented the largest group of children with a permanency goal of adoption. The percentage breakdown was similar to the previous quarter.

Chart 29b: Ages of Children with a Permanency Goal of Adoption During the Quarter



Of the 866 children with a permanency goal of adoption, 53 percent were male and 47 percent were female. These percentages were similar to the previous quarter.

Chart 29c: Gender of Children with a Permanency Goal of Adoption During the Quarter



Characteristics of Children with a Permanency Goal of Adoption at the End of the Quarter

There were 730 children with a permanency goal of adoption at the end of the quarter. The table below outlines those children’s characteristics.

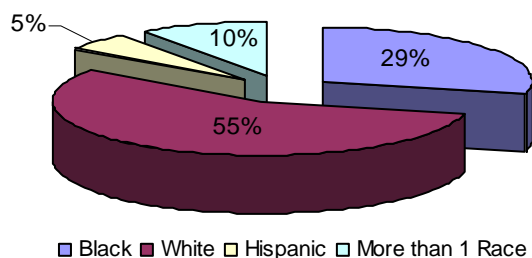
**Table 20: Characteristics of Children with a Permanency Goal of Adoption at the End of the Quarter
2nd Quarter SFY 2007**

Age	Gender	White	Black	Asian	AIAN	NAPI	Hispanic	More Than 1 Race	Total
0 to 1	Female	10	8	1	0	0	0	1	20
	Male	12	9	0	0	0	1	2	24
2 to 5	Female	44	32	0	0	0	5	11	92
	Male	57	29	0	0	0	8	14	108
6 to 11	Female	61	24	0	0	0	8	14	107
	Male	84	36	0	0	0	10	9	139
12 to 15	Female	41	29	0	1	0	1	11	83
	Male	55	31	0	0	0	5	7	98
16 to 18	Female	23	2	0	0	0	0	1	26
	Male	17	9	0	0	0	0	1	27
Over 18	Female	1	0	0	0	0	0	1	2
	Male	0	1	0	0	0	0	0	1
Total		405	210	1	1	0	38	72	727

*Demographic data had not been entered into CHRIS for three children.

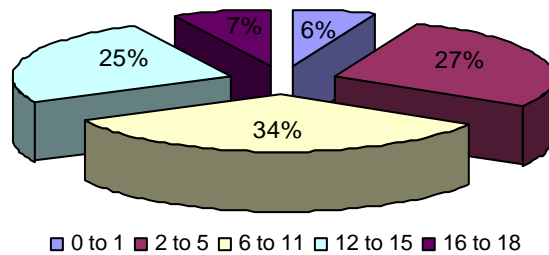
Of the 730 children with a permanency goal of adoption at the end of the quarter, 55 percent were white, 29 percent were black and 10 percent were of more than one race. These percentages were similar to the previous quarter.

Chart 30a: Ethnicity of Children with a Permanency Goal of Adoption at the End of the Quarter



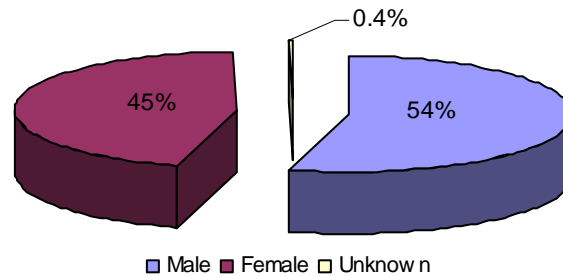
At the end of the quarter, children between the ages of 6 and 11 (34%) continued to represent the largest age group with a permanency goal of adoption, and children between the ages of 2 and 5 (27%) represented the second largest group.

Chart 30b: Ages of Children with a Permanency Goal of Adoption at the End of the Quarter



More male children (54%) than female children (45%) set a permanency goal of adoption at the end of the second quarter, similar to the previous quarter.

Chart 30c: Gender of Children with a Permanency Goal of Adoption at the End of the Quarter



Characteristics of Children whose Parents have had Parental Rights Terminated During the Quarter

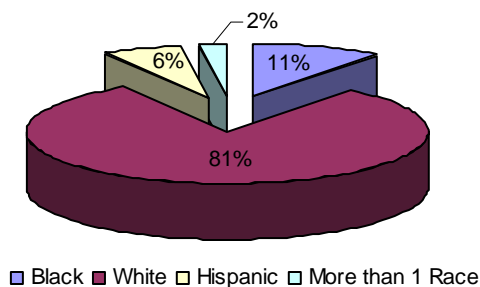
There were 47 children whose parents had their parental rights terminated during the second quarter. The table below outlines the characteristics of those children.

**Table 21: Characteristics of Children whose Parents have had Parental Rights Terminated During the Quarter
2nd Quarter SFY 2007**

Age	Gender	White	Black	Asian	AIAN	NAPI	Hispanic	More Than 1 Race	Total
0 to 1	Female	4	1	0	0	0	0	0	5
	Male	4	0	0	0	0	3	0	7
2 to 5	Female	8	0	0	0	0	0	1	9
	Male	6	4	0	0	0	0	0	10
6 to 11	Female	5	0	0	0	0	0	0	5
	Male	4	0	0	0	0	0	0	4
12 to 15	Female	6	0	0	0	0	0	0	6
	Male	1	0	0	0	0	0	0	1
16 to 18	Female	0	0	0	0	0	0	0	0
	Male	0	0	0	0	0	0	0	0
Total		38	5	0	0	0	3	1	47

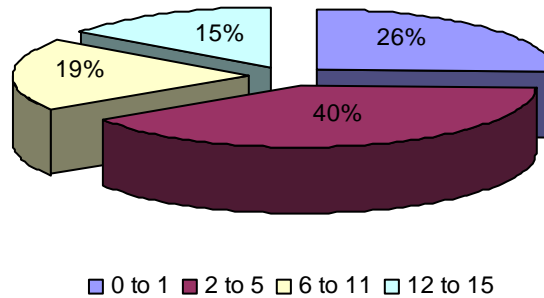
During the quarter, 81 percent of the children whose parents had their parental rights terminated during the quarter were white, 11 percent were black and six percent were Hispanic.

Chart 31a: Ethnicity of Children whose Parents have had Parental Rights Terminated



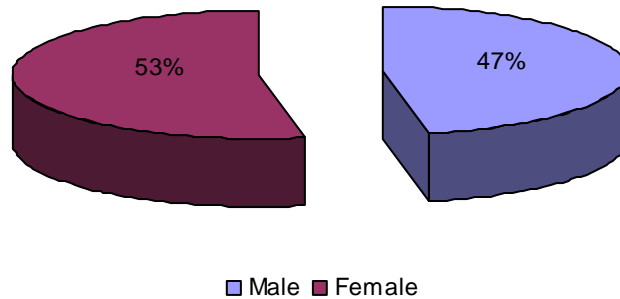
Children between the ages of two and five (40%) represented the largest group of children whose parents terminated their parental rights during the quarter.

Chart 31b: Ages of Children whose Parents have had Parental Rights Terminated



During the quarter, more female children (53%) than male children (47%) had parents who terminated their parental rights.

Chart 31c: Gender of Children whose Parents have had Parental Rights Terminated



Characteristics of Children Available for Adoption at the End of the Quarter

At the end of the second quarter, 418 children were available for adoption, a decrease from the previous quarter (440). Demographic information for children available for adoption, shown in the table below, was very similar to previous quarters.

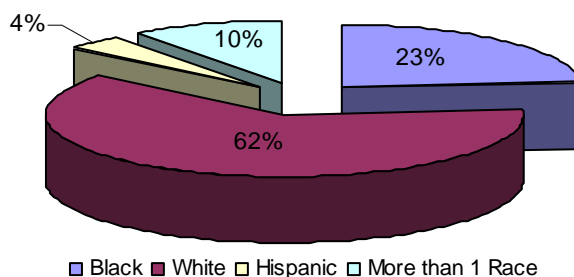
**Table 22: Characteristics of Children Available for Adoption at the End of the Quarter
2nd Quarter SFY 2007**

Age	Gender	White	Black	Asian	AIAN	NAPI	Hispanic	More Than 1 Race	Total
0 to 1	Female	8	3	0	0	0	0	1	12
	Male	7	3	0	0	0	1	1	12
2 to 5	Female	26	6	0	0	0	3	3	38
	Male	30	12	0	0	0	4	8	54
6 to 11	Female	40	17	0	0	0	3	10	70
	Male	54	16	0	0	0	2	5	77
12 to 15	Female	29	21	0	1	0	0	10	61
	Male	38	13	0	0	0	3	4	58
16 to 18	Female	14	2	0	0	0	0	0	16
	Male	13	5	0	0	0	0	1	19
Total		259	98	0	1	0	1	43	417

*Demographic data had not been entered into CHRIS for one child.

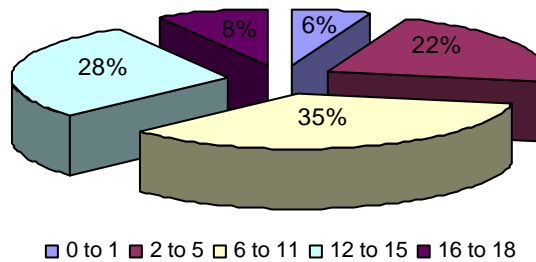
Of the children available for adoption, 62 percent were white and 23 percent were black. These percentages were similar to the previous quarter.

Chart 32a: Ethnicity of Children Available for Adoption at the End of the Quarter



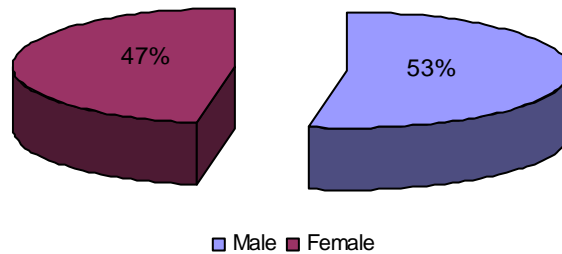
At the end of the quarter, more children between the ages of 6 and 11 (35%) were available for adoption than any other age group.

Chart 32b: Ages of Children Available for Adoption at the End of the Quarter



At the end of the quarter, more male children (53%) than female children (47%) were available for adoption. These percentages were similar to the first quarter.

Chart 32c: Gender of Children Available for Adoption at the End of the Quarter



Current Placements of Children Available for Adoption

At the end of the second quarter, more children who were available for adoption were placed in DCFS foster homes (48%) than in any other type of placement, followed by therapeutic foster homes (15%). These results were similar to the previous quarter.

**Table 23: Current Placements of Children Available for Adoption
2nd Quarter SFY 2007**

Placement	Number of Children	Percentage
DCFS Foster Home	199	48%
Pre-Adoptive Home	54	13%
Pre-Adoptive Home (Foster Parent)	2	.5%
Therapeutic Foster Home	62	15%
Incarceration	2	.5%
Residential	48	12%
Residential Facility	19	5%
Hospital/Medical	10	2%
Emergency Shelter	6	1%
Youth Services	4	1%
Runaway	2	.5%
Independent Living	4	1%
Temporary Placement	5	1%
Unknown	1	.2%
Total*	418	100%

*The sum of individual percentages may not equal 100% due to rounding.

Characteristics of Children in Pre-adoptive Placements

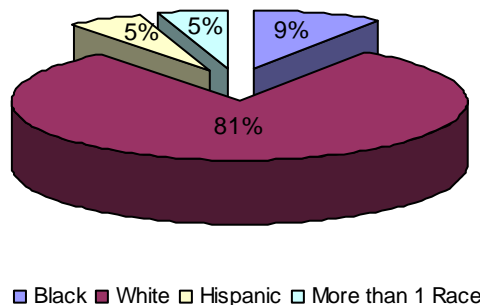
During the second quarter, 98 children were placed in pre-adoptive homes. This number includes children who could have entered pre-adoptive homes during a previous quarter as well as children who were placed in pre-adoptive homes during the current quarter.

**Table 24: Characteristics of Children in Pre-adoptive Placements
2nd Quarter SFY 2007**

Age	Gender	White	Black	Asian	AIAN	NAPI	Hispanic	More Than 1 Race	Total
0 to 1	Female	6	1	0	0	0	0	0	7
	Male	2	1	0	0	0	0	0	3
2 to 5	Female	13	0	0	0	0	2	1	16
	Male	13	3	0	0	0	2	0	18
6 to 11	Female	16	3	0	0	0	0	3	22
	Male	19	0	0	0	0	0	0	19
12 to 15	Female	5	1	0	0	0	0	1	7
	Male	3	0	0	0	0	1	0	4
16 to 18	Female	2	0	0	0	0	0	0	2
	Male	0	0	0	0	0	0	0	0
Total		79	9	0	0	0	5	5	98

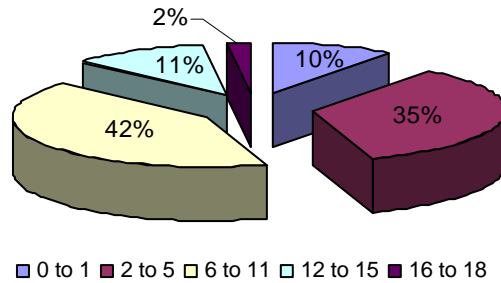
Of the 98 children in pre-adoptive homes during the quarter, 81 percent were white and nine percent were black. These percentages were similar to the previous quarter. Over the past year, the quarterly percentage of white children was relatively constant; however, the number of black children decreased gradually from 22 percent to nine percent.

Chart 33a: Ethnicity of Children Placed in Pre-adoptive Homes During the Quarter



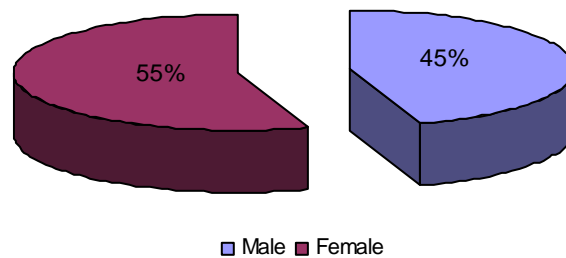
The largest group of children placed in pre-adoptive homes was children between the ages of 6 and 11 (42%). The smallest percentage of children in pre-adoptive placements was children between the ages of 16 and 18 (2%).

33b: Ages of Children Placed in Pre-adoptive Homes During the Quarter



Of the 98 children placed in pre-adoptive homes during the quarter, 45 percent were male and 55 percent were female. These percentages were a change from the previous quarter when 51 percent were females and 49 percent were males.

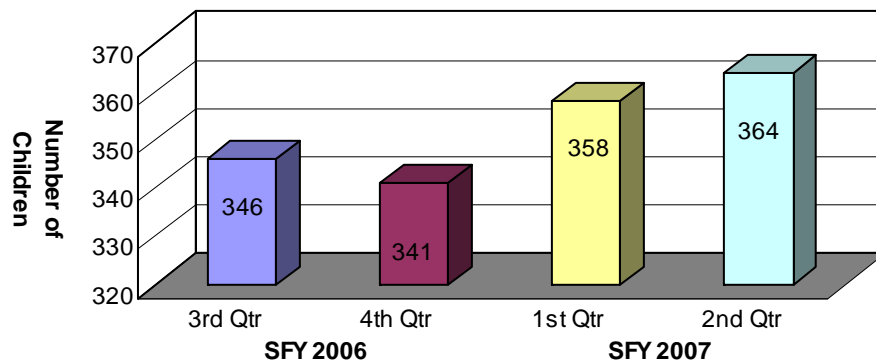
33c: Gender of Children Placed in Pre-adoptive Homes During the Quarter



Children not Placed in Adoptive Homes whose Parents have had their Parental Rights Terminated

During the second quarter, there were 364 children whose parents had their parental rights terminated but were not placed in adoptive homes, an increase from the previous quarter (358). This statistic was derived by subtracting the number of children placed in adoptive homes at the end of the quarter (54) from the number of children available for adoption at the end of the quarter (418).

Chart 34: Children not Placed in Adoptive Homes whose Parents have had their Parental Rights Terminated



Children with Special Needs

During the second quarter, 54 children with special needs were in pre-adoptive placements¹⁴. Children with special needs are defined as children who have severe medical or psychological needs that require ongoing treatment. Children at high risk for the development of serious physical, mental or emotional conditions may be considered special needs if documentation is provided by a medical professional specializing in the area of the condition for which the child is considered at risk. Other children may be considered special needs if they are Caucasian children over the age of nine, African American children at age two years or older; or children who are members of a sibling group of three or more that are to be placed together.

**Table 25: Children with Special Needs who were Placed in Adoptive Homes
2nd Quarter SFY 2007**

Special Needs Condition	Number of Children
Race	54
Age	50
Member of sibling group	37

Characteristics of Children with Finalized Adoptions

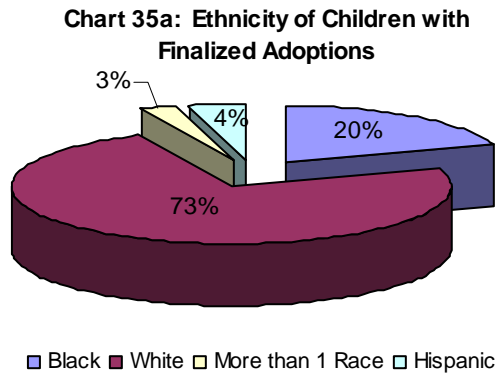
During the quarter, 71 children had their adoptions finalized, a decrease from the previous quarter (78). The following table outlines the characteristics of the children with finalized adoptions.

**Table 26: Characteristics of Children with Finalized Adoptions
2nd Quarter SFY 2007**

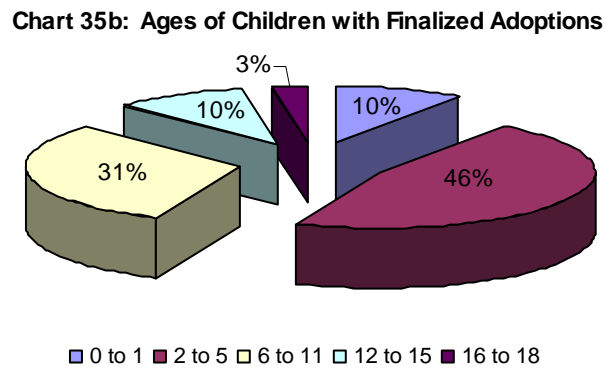
Age	Gender	White	Black	Asian	AIAN	NAPI	His-panic	More Than 1 Race	Total
0 to 1	Female	4	1	0	0	0	0	0	5
	Male	1	1	0	0	0	0	0	2
2 to 5	Female	10	2	0	0	0	0	1	13
	Male	11	6	0	0	0	2	1	20
6 to 11	Female	8	3	0	0	0	0	0	11
	Male	10	1	0	0	0	0	0	11
12 to 15	Female	4	0	0	0	0	0	0	4
	Male	3	0	0	0	0	0	0	3
16 to 18	Female	0	0	0	0	0	1	0	1
	Male	1	0	0	0	0	0	0	1
Total		52	14	0	0	0	3	2	71

¹⁴ This number does not take into account children with severe medical and psychological needs because this data is not available in CHRIS (AR Children’s Reporting and Information System). As enhancements are made to the data system to capture this information, it will be provided in future reports.

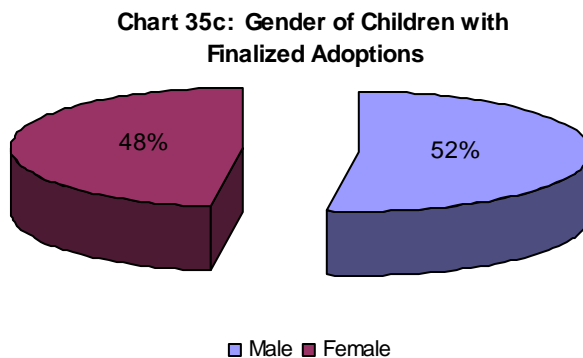
Of the 71 finalized adoptions during the second quarter, 73 percent of the children were white and 20 percent were black.



Children between the ages of 2 and 5 represented the largest group of children whose adoptions were finalized during the quarter at 46 percent.



During the quarter, 48 percent of the children whose adoptions were finalized were female and 52 percent were male.



Subsidized Adoptions

During the second quarter, 60 children began receiving adoption subsidies. Of those, 46 children received federally-funded subsidies and 14 received state-funded subsidies.

Characteristics of Children who Received Adoption Subsidies

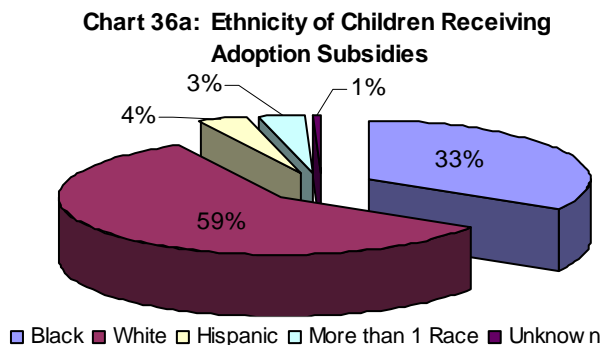
During the second quarter, 2,757 children received adoption subsidies. The following table outlines the demographics of those children.

**Table 27: Characteristics of Children Receiving Adoption Subsidies
2nd Quarter SFY 2007**

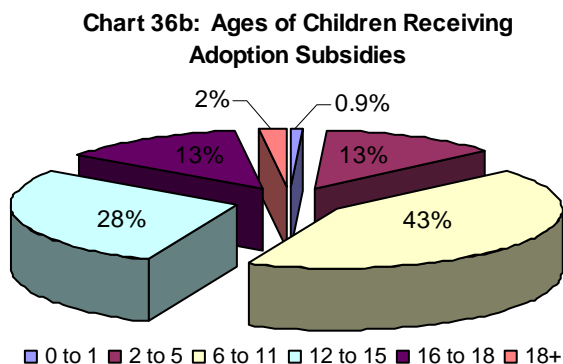
Age	Gender	White	Black	Asian	AIAN	NAPI	Hispanic	More Than 1 Race	Total
0 to 1	Female	12	2	0	0	0	0	1	15
	Male	7	3	0	0	0	0	0	10
2 to 5	Female	88	44	0	0	0	11	15	158
	Male	102	60	0	0	0	15	10	187
6 to 11	Female	332	198	1	1	0	24	27	583
	Male	360	185	0	0	0	22	22	589
12 to 15	Female	230	141	1	0	0	17	5	394
	Male	239	135	0	1	0	3	6	384
16 to 18	Female	112	57	0	0	0	3	2	174
	Male	114	75	0	0	0	4	1	194
18+	Female	17	14	0	0	0	0	0	31
	Male	11	8	0	0	0	1	0	20
Total*		1,624	922	2	2	0	100	89	2,739

*Demographic data had not been entered into CHRIS for 18 children.

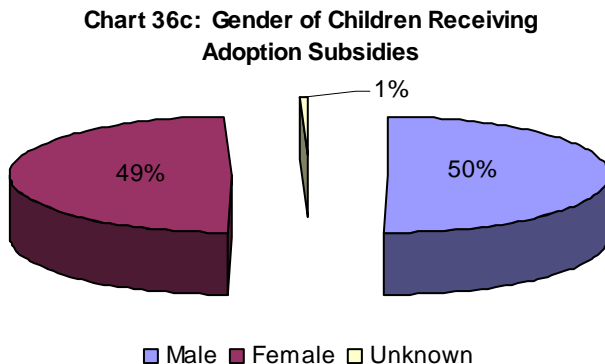
Fifty-nine percent of the children who received adoption subsidies were white and 33 percent were black, similar to the previous quarter.



The majority of the children receiving adoption subsidies during the quarter were between the ages of 6 and 11 (42%).



Of the children receiving adoption subsidies, 50 percent were male and 49 percent were female.



Adoptive Homes

At the beginning of the second quarter, 382 adoptive homes were available; at the end of the second quarter, 303 adoptive homes were available.

**Table 28: Adoptive Homes
2nd Quarter SFY 2007**

	Total Adoptive Homes	Non-Foster Adoptive Homes	Foster Adoptive Homes
Homes available for children at beginning of quarter	382	159	223
Newly available homes	42	19	23
Homes that had children placed during the quarter	37	19	18
Home that experienced a disruption	4	1	3
Homes that closed without a placement	88	56	32
Homes available at the end of the quarter	303	104	199