

SFY 2008

# Quarterly Performance Report

1<sup>st</sup> Quarter  
SFY 2008

(July 2007 – September 2007)



Produced for:  
*Arkansas Department of Human Services  
Division of Children and Family Services  
Quality Assurance Unit*

Produced by:  
*Hornby Zeller Associates, Inc.*

## Table of Contents

<b>Executive Summary</b> .....	<b>i</b>
<b>Part I: Performance Indicators</b> .....	<b>1</b>
Percentage of Families with True Allegations of Child Maltreatment Three Months, Six Months and One Year after a Previous True Report ....	2
Percentage of Foster Families with True Reports of Maltreatment.....	2
Percentage of Children Receiving Supportive Services, Protective Services or Intensive Family Services (IFS) who were Abused or Neglected within One Year of the Initiation of Services.....	3
Percentage of Children Receiving Supportive Services, Protective Services or Intensive Family Services (IFS) who Entered Foster Care Within One Year of the Initiation of Services .....	4
Percentage of Children in Foster Care who Returned Home within Eighteen Months .....	4
Percentage of Children in Foster Care who have Experienced Three or more Placements within the Past Eighteen Months.....	5
Percentage of Siblings in Placement who are Placed Together .....	6
Percentage of Children Living with Adoptive Families within Twelve Months of the Termination of Parental Rights .....	7
Number of Children Placed in Pre-adoptive Homes whose Adoptions were Finalized within Twelve Months of Entering Pre-adoptive Placements .....	7
<b>Part II: Compliance Index</b> .....	<b>8</b>
Timely Initiation of Child Maltreatment Assessments .....	9
Timely Completion of Child Maltreatment Assessments.....	10
24- and 72-Hour Initial Health Screenings for Children Entering Foster Care .....	11
Comprehensive Health Assessments.....	12
Foster Home Recruitment .....	13
Foster Home Re-evaluations .....	13
Required Visits Made by Worker .....	14
<b>Part III: Description of Population and Services</b> .....	<b>15</b>
<b>Section I: True Child Maltreatment Reports</b> .....	<b>16</b>
Child Maltreatment Assessments.....	16
Characteristics of Children in True Maltreatment Reports.....	18
Children Involved in Allegations of True Maltreatment Reports.....	20
<b>Section II: Foster Care</b> .....	<b>21</b>
Characteristics of Children in Foster Care.....	21
Entries into Foster Care .....	25
Exits from Foster Care .....	29
Permanency Goals of Children in Foster Care.....	32
Length of Stay of Children in Foster Care .....	33
Number of Placements of Children in Foster Care.....	34

## Quarterly Performance Report – Table of Contents

---

Characteristics of Children who Experienced Two or More Placements ..	35
Current Placement of Children in Foster Care .....	37
Characteristics of Children on Runaway Status at the End of the Quarter.....	38
Characteristics of Children in Relative Care.....	40
<b>Section III: Adoption.....</b>	<b>42</b>
Characteristics of Children with a Permanency Goal of Adoption During the Quarter.....	42
Characteristics of Children with a Permanency Goal of Adoption at the End of the Quarter .....	44
Characteristics of Children whose Parents have had Parental Rights Terminated During the Quarter .....	46
Characteristics of Children Available for Adoption at the End of the Quarter.....	48
Current Placements of Children Available for Adoption .....	50
Characteristics of Children in Pre-adoptive Placements .....	51
Children not Placed in Adoptive Homes whose Parents have had their Parental Rights Terminated .....	53
Children with Special Needs .....	54
Characteristics of Children with Finalized Adoptions.....	54
Subsidized Adoptions.....	56
Characteristics of Children who Received Adoption Subsidies .....	56
Adoptive Homes .....	57

## EXECUTIVE SUMMARY

The Quarterly Performance Report (QPR) is distributed to Division of Children and Family Services' (DCFS) managers and legislative committees dealing with children and youth. The QPR for the first quarter of State Fiscal Year (SFY) 2008, specifically July through September 2007, consists of three parts:

1. **Performance Indicators**, which provide information on service outcomes, such as:
  - a. *Percentage of Families with True Allegations of Child Maltreatment Three Months, Six Months and One Year after a Previous True Report*
  - b. *Percentage of Siblings in Placement who are Placed Together*
  - c. *Percentage of Children Living with Adoptive Families within Twelve Months of the Termination of Parental Rights*
  
2. **Compliance Index**, which reports on the Division's compliance with requirements set by DCFS with guidance from the Arkansas legislative children and youth committees, such as:
  - a. *Timely Completion of Child Maltreatment Assessments*
  - b. *24- and 72-Hour Initial Health Screenings for Children Entering Foster Care*
  - c. *Foster Home Recruitment*
  
3. **Description of Population and Services**, which describes the children who were the subjects of maltreatment reports; were served in foster care; and were provided adoption services, such as:
  - a. *Permanency Goals of Children in Foster Care*
  - b. *Characteristics of Children in Pre-Adoptive Homes*

The QPR provides this information on a quarterly basis, showing trends over time. The report provides the agency with information on the populations it serves and on pertinent issues so the agency can improve performance and better target its efforts.

## Part I: Performance Indicators

DCFS has established nine performance indicators to measure its progress with regard to its major goals of child safety, permanency and well-being. During the first quarter, DCFS continued its efforts toward meeting these goals. Overall, DCFS maintained a performance standard that mirrors past efforts and successes.

There were no noteworthy areas in this section during the first quarter.

## Part II: Compliance Index

DCFS has set compliance measures with guidance from the House Committees on Aging, Children and Youth, Legislative and Military Affairs and the Senate Interim Committee on Children and Youth. An index is compiled by reporting the level of compliance with these measures.

For the first quarter, the QPR addresses five noteworthy areas, as shown below:

- Timely Initiation of Child Maltreatment Assessments

The percentage for timely initiations stood at **82 percent**, a decrease of three percentage points from the previous quarter (85%) and below the goal of 95 percent.

Areas 3, 8, 9 and 10 met or exceeded the 95 percent goal. Four areas improved compliance for Priority One initiations, and four areas improved compliance with Priority Two initiations. For Priority One initiations, only Area 4 was below 87 percent compliance. Area 4 is working to fill two vacant positions, one in Ouachita County and another in Little River County. The additional workers should increase timely initiations in future quarters.

For Priority Two initiations, all areas exceeded 85 percent compliance. Area 1 received a heavy volume of new referrals, which were prioritized to ensure that they were completed timely. Meanwhile, Area 1 has new staff completing training, which should help improve timely initiations in future quarters. Area 7's County Supervisors will continue to provide detailed reports on any Priority Two initiations that are untimely. Area 10 will emphasize to County Supervisors that they must utilize the appropriate procedures to assure timely initiations. Furthermore, all areas except one will be receiving new Investigator positions, after approval by the legislative Personnel Committee in January 2008, which should help with timely initiation and completion of investigations.

- Timely Completion of Child Maltreatment Assessments

The percentage for timely completions stood at **63 percent**, an increase of five percentage points from the previous quarter (58%) but still below the goal of 90 percent.

Seven out of ten areas increased compliance in the area of timely completion of investigations. All areas except one will be receiving new investigator positions, after approval by the legislative Personnel committee in January, which should help with timely initiations and completion of investigations.

- 24-Hour and 72-Hour Initial Health Screenings (IHS) for Children Entering Foster Care

The percentage for 24-hour initial health screenings stood at **84 percent**, the same as the previous quarter but still below the goal of 95 percent.

The percentage for 72-hour initial health screenings stood at **83 percent**, the same as the previous quarter but still below the goal of 95 percent.

For the 24-hour screenings, four areas achieved 100 percent compliance this quarter. Areas 2 and 8 improved compliance over the previous quarter, and Areas 1, 7 and 10 continued to maintain 100 percent compliance from the previous quarter.

For the 72-hour screenings, two areas exceeded the 95 percent goal, and six additional areas had a compliance rate that met or exceeded 80 percent. All but three areas improved compliance over the previous quarter.

Although compliance fell below the goal of 95 percent, areas have established corrective actions to help remedy the barriers that exist. Barriers to health screenings for children entering care include staff shortages and a lack of providers. Specifically, the Area 3 manager has believes that the new addition of a Health Service Worker will improve the tracking of screenings and other medical appointments.

- Comprehensive Health Assessments

The percentage for comprehensive health assessments stood at **63 percent**, an increase of 16 percentage points from the previous quarter and below the goal of 95 percent.

Seven areas increased compliance with timely comprehensive health assessments over the previous quarter. The lowest percentage of completed health assessments occurred in Areas 5, 6 and 8. Some barriers to comprehensive health assessments include the volume of children entering care, scheduling or communication problems among staff and a lack of available appointment slots available at clinics. DCFS will work with UAMS on clinic availability. As DCFS has filled a greater number of allocated positions and these staff complete training, staff availability to support this function should increase. Each area with compliance issues will re-examine appointment systems.

- Required Visits Made by Worker

During the first quarter, the percentage of children who received a visit remained at **60 percent** in July and August before decreasing to **59 percent** in September. This signified a change from the previous quarter when the percentage of children who received visits for April through June was 56 percent, 57 percent and 49 percent, respectively.

Eight areas experienced an increase in required worker visits over the entire quarter. DCFS continues to focus on filling vacant positions; 91 percent of the positions were filled in August 2007. Even though the percentage of available positions that are filled has increased, workers must still complete training before they can carry a caseload. Additionally, the demand on existing workers continues to increase due to the growing volume of children and families to be served. The number of children in foster care during the quarter has increased nine percent from the first quarter of SFY 2006 (4,192) to the first quarter of SFY 2008 (4,570). The addition of the new investigator positions should reduce demands on current staff who are trying to carry both cases and investigations and free up time to make required visits.

### **Part III: Description of Population and Services**

The Description of Population and Services section describes the children who were subjects of maltreatment reports; were served in foster care; and were provided with adoption services.

There were no noteworthy areas in this section during the first quarter.

## **PART I: PERFORMANCE INDICATORS**

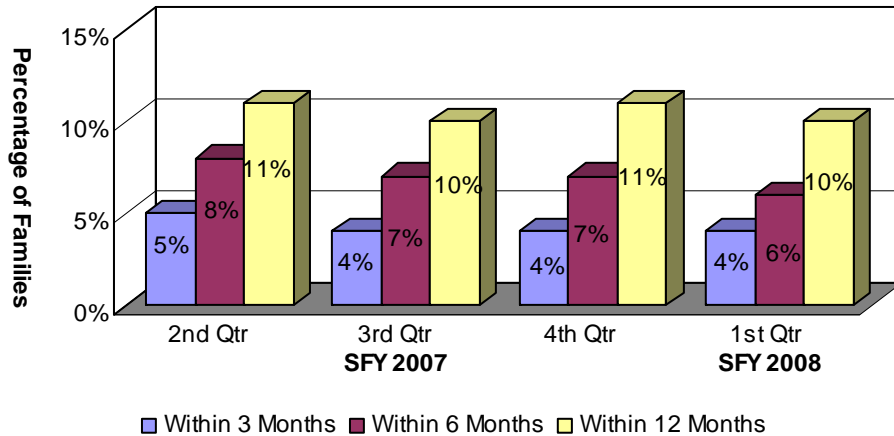
The Division has established nine performance measures to indicate achievement levels regarding its major goals in child safety, family preservation and permanency:

- Percentage of families with true allegations of child maltreatment three months, six months and one year after a previous true report;
- Percentage of foster families with true reports of maltreatment;
- Percentage of children receiving Supportive Services, Protective Services or Intensive Family Services (IFS) who were abused or neglected within one year of the initiation of services;
- Percentage of children receiving Supportive Services, Protective Services or Intensive Family Services (IFS) who entered foster care within one year of the initiation of services;
- Percentage of children in foster care who returned home within eighteen months;
- Percentage of children in foster care who have experienced three or more placements within the past eighteen months;
- Percentage of siblings in placement who are placed together;
- Percentage of children living with adoptive families within twelve months of the termination of parental rights; and
- Number of children placed in pre-adoptive homes whose adoptions were finalized within twelve months of entering pre-adoptive placements.

**Percentage of Families with True Allegations of Child Maltreatment Three Months, Six Months and One Year after a Previous True Report**

Of the 1,624 families involved in true reports of maltreatment during the first quarter one year ago, only 10 percent (156) had a subsequent true report within 12 months. Fifty-three percent of true reports involved both the same perpetrator and the same type of maltreatment as the initial report<sup>1</sup>.

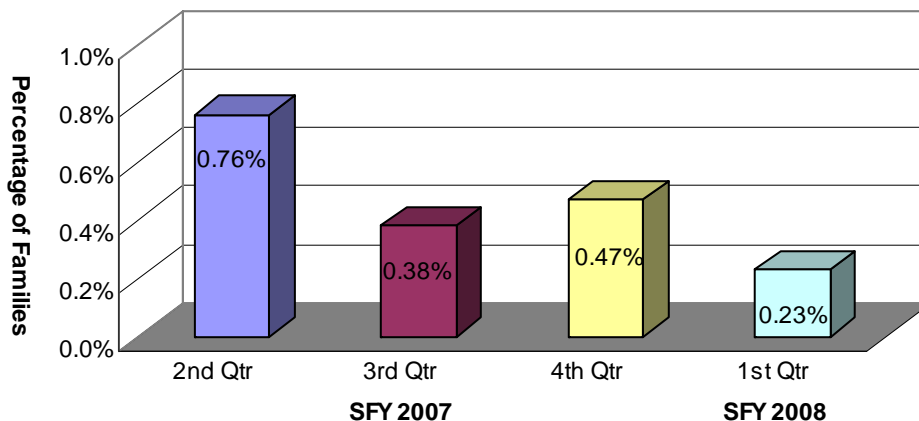
**Chart 1: Recurrence of Maltreatment within 12 Months of Initial Report**



**Percentage of Foster Families with True Reports of Maltreatment**

Of the 31 foster home maltreatment reports received during the first quarter, only three were found to be true. Based upon 1,312 active foster homes<sup>2</sup> during the quarter, the percentage of foster families with true reports of maltreatment was .23 percent.

**Chart 2: Percentage of Foster Families with True Reports of Maltreatment**



<sup>1</sup> The remaining 47 percent of the subsequent reports were distributed as follows: No repetition of perpetrator or type of abuse – 19.87 percent; Same perpetrator only – 7.05 percent; Same type of abuse only – 19.87 percent.

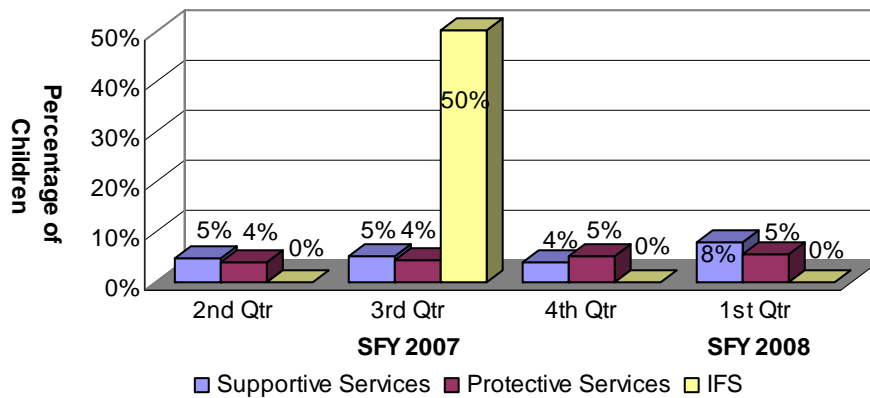
<sup>2</sup> This includes family and therapeutic foster homes.

**Percentage of Children Receiving Supportive Services, Protective Services or Intensive Family Services (IFS) who were Abused or Neglected within One Year of the Initiation of Services**

Generally, families receiving Supportive Services have less severe problems. However, families receiving Intensive Family Services (IFS) are, by definition, at imminent risk of having one or more children placed in foster care or already have children in foster care. Families receiving Protective Services generally fall between those two extremes.

Of the 221 children who began receiving Supportive Services between July and September 2006, 17 children (8%) experienced a true report of maltreatment within one year. Of the 2,873 children who began receiving Protective Services, 157 children (5%) were involved in a true report within one year. No children began receiving IFS during the quarter one year ago.

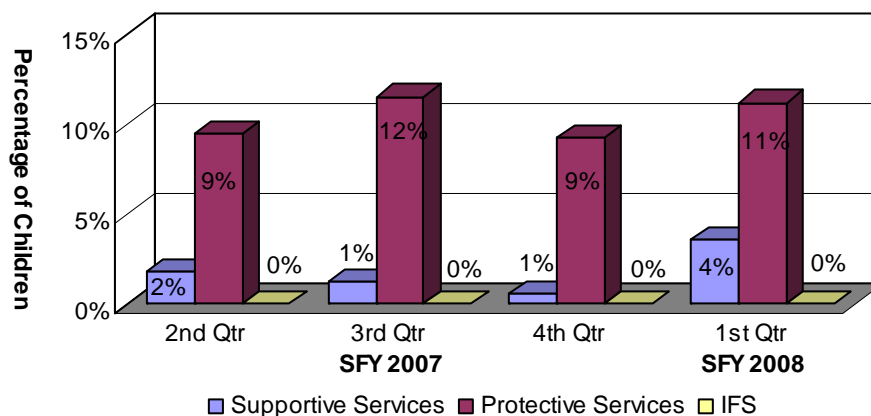
**Chart 3: Children Receiving Supportive Services, Protective Services or IFS who were Abused or Neglected within One Year of the Initiation of Services**



**Percentage of Children Receiving Supportive Services, Protective Services or Intensive Family Services (IFS) who Entered Foster Care within One Year of the Initiation of Services**

Between July and September 2006, eight of the 221 (4%) children who began receiving Supportive Services entered foster care within one year of the initiation of these services; 323 of the 2,873 (11%) children who began receiving Protective Services entered care within one year of the initiation of these services; and no children received IFS services one year ago.

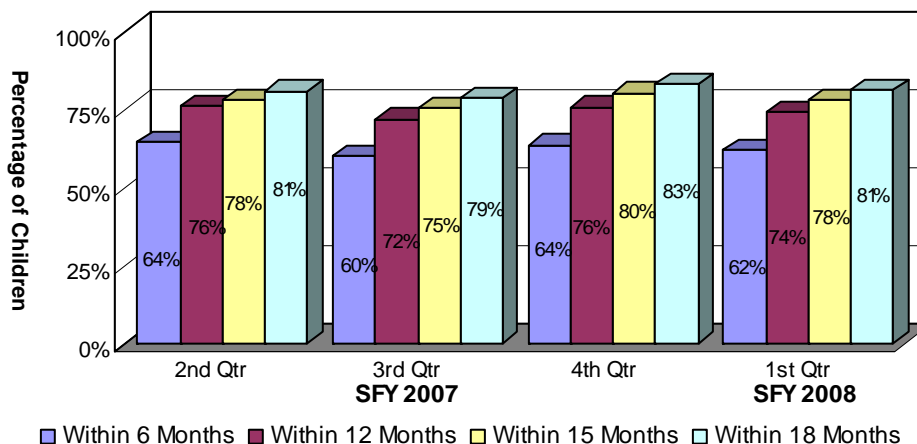
**Chart 4: Children Receiving Supportive Services, Protective Services or Intensive Family Services who Entered Foster Care within One Year of the Initiation of Services**



**Percentage of Children in Foster Care who Returned Home within Eighteen Months**

During the quarter 18 months prior to the current quarter, 1,042 children entered foster care. Of those, 845 children (81%) returned home within 18 months.

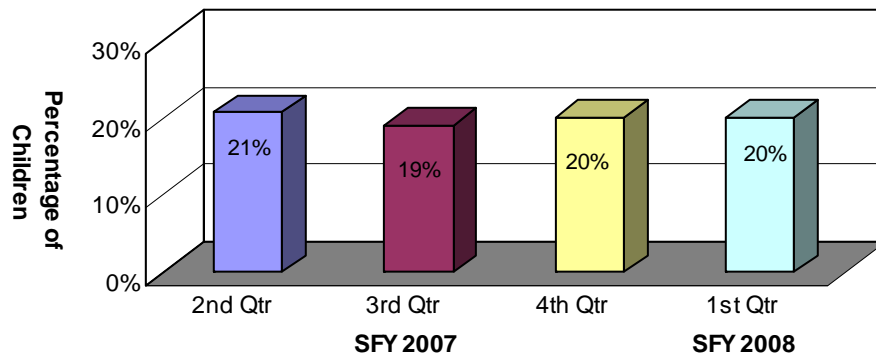
**Chart 5: Children in Foster Care who Returned Home within Eighteen Months**



***Percentage of Children in Foster Care who have Experienced Three or more Placements within the Past Eighteen Months***

Of the 1,132 children who entered foster care during the quarter 18 months prior to the current quarter, 223 children (20%) experienced three or more placements within 18 months. This was the same as the previous quarter. Of those same 1,132 children, 175 (15%) experienced three or more placements within 15 months of entering foster care.

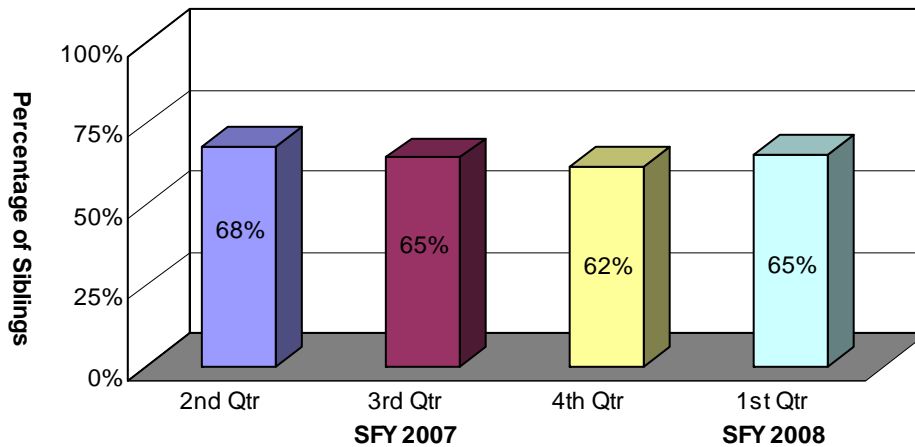
**Chart 6: Children in Foster Care who have Experienced Three or More Placements within the Past Eighteen Months**



***Percentage of Siblings in Placement who are Placed Together***

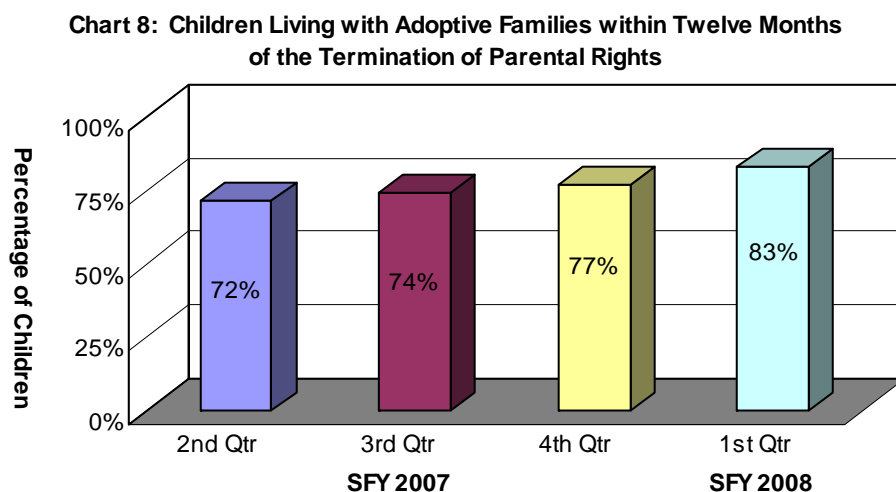
During the first quarter, there were 1,816 children with siblings in foster care. Sixty-five percent of those children (1,188 children) were placed with at least one of their siblings. This was three percentage points higher than the previous quarter (62%) and lower than the same quarter ending one year ago (70%). Of those same 1,816 children, 771 (42%) were placed with all of their siblings, which was higher than the previous quarter. These figures do not exclude children who were placed separately for valid reasons such as safety issues or court orders.

**Chart 7: Siblings in Care who are Placed Together**



***Percentage of Children Living with Adoptive Families within Twelve Months of the Termination of Parental Rights***

Of the 71 children whose parents had their parental rights terminated between July and September 2006, 59 children (83%) were placed in adoptive homes within 12 months of the termination of parental rights. This was six percentage points higher than the previous quarter.



***Number of Children Placed in Pre-adoptive Homes whose Adoptions were Finalized within Twelve Months of Entering Pre-adoptive Placements***

Sixty-six children were placed in pre-adoptive homes between July and September 2006. Of those, 49 children (74%) had their adoptions finalized within 12 months of being placed in pre-adoptive homes, higher than the previous quarter and higher than the same quarter one year ago. Six children (18%) experienced disruptions, which occur when a child has been placed in a pre-adoptive home and the family or the child decides not to proceed with the adoption and the child subsequently leaves the home. There were 11 children whose adoptions were still pending finalization 12 months after placement in adoptive homes.

**Table 1: Children Placed in Pre-adoptive Homes whose Adoptions were finalized within Twelve Months of Entering Pre-adoptive Placements  
1st Quarter SFY 2008**

Adoption Status	Number of Children
Children Placed in Pre-adoptive Homes	66
Finalized Adoption	49
Disrupted Adoptive Placements	12
Children with a Disruption who were Re-placed in Pre-adoptive Homes	6
Still Pending after Twelve Months	11

## PART II: COMPLIANCE INDEX

The Division has set compliance measures with guidance from the Joint Interim Committee on Children and Youth. An index is compiled by reporting the level of compliance in relation to these measures.

### **Goal   Compliance Measure**

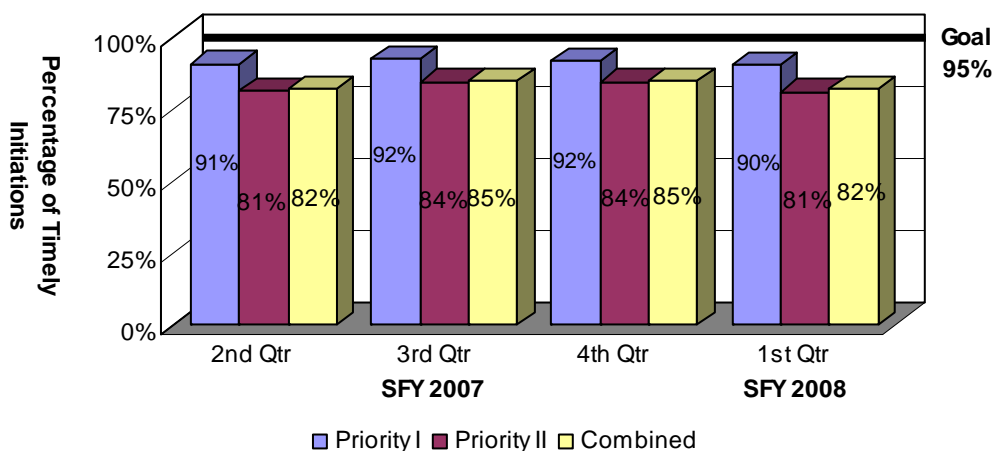
- 95%**   ***Timely Initiation of Child Maltreatment Assessments.*** Timely initiation means the investigator interviews or observes the victim child outside the presence of the alleged offender within 24 hours of any report of alleged severe maltreatment or within 72 hours otherwise.
- 90%**   ***Timely Completion of Child Maltreatment Assessments.*** Timely completion means a determination must be made regarding an allegation of child maltreatment within 30 days of receipt of the allegation.
- 95%**   ***24-Hour Initial Health Screenings.*** This screening is conducted within 24 hours after removal from the home on children who enter foster care due to an allegation of severe maltreatment or if there is evidence of acute illness or injury.
- 95%**   ***72-Hour Initial Health Screenings.*** This screening is conducted within 72 hours after removal from the home on all children who enter foster care who are not subject to the 24-hour screening.
- 95%**   ***Comprehensive Health Assessments.*** The purpose of this assessment is to evaluate the physical and mental health status of all foster children and is to be completed within 60 days of a child entering foster care.
- 80**   ***Foster Home Recruitment.*** DCFS must ensure that a sufficient number and homes variety of foster homes meeting minimal standards and matched to the needs and characteristics of foster children are available. The goal is 80 homes for the quarter or 320 homes for the year.
- 95%**   ***Foster Home Re-evaluations.*** DCFS must re-evaluate at least annually each foster home's ability to care for children.
- 85%**   ***Required Visits Made by Worker.*** DCFS must provide data on the percentage of monthly visits made by DCFS workers to children in foster care.

### ***Timely Initiation of Child Maltreatment Assessments***

Whenever there is an allegation of child maltreatment, the Family Service Worker, the Crimes Against Children Division (CACD) staff member or staff from another local law enforcement agency must interview or observe the victim child outside the presence of the alleged offender within 72 hours of the report (Priority II), unless there is an allegation of severe maltreatment, in which case the interview or observation must occur within 24 hours of the report (Priority I). There were 6,440 referrals for child maltreatment assessments during the quarter. Although there was a total of 6,440 referrals for the quarter, eight of the referrals did not have alleged victim children due to the fact that the victim was over the age of 18. Therefore, timely initiations will only be reflected for 6,332 referrals. Of that number, 500 Priority I referrals and 4,371 Priority II referrals were assigned to DCFS for investigation. Of the DCFS Priority I referrals, 452 assessments were initiated within the required 24-hour period. Of the DCFS Priority II referrals, 3,534 assessments were initiated within the required 72-hour period<sup>3</sup>. The compliance rate for DCFS Priority I initiations was 90 percent and 81 percent for Priority II initiations, which resulted in a combined compliance rate of 82 percent, this was three percentage points lower than the previous quarter.

As noted previously, the Crimes Against Children Division (CACD) of the Arkansas State Police is also responsible for handling child abuse assessments. CACD was responsible for 1,567 of the 6,440 referrals that came in during the quarter, of which 1,495 were Priority I referrals and 66 were Priority II referrals. Of the Priority I referrals, 1,465 assessments (98%) were initiated in a timely manner. Of the Priority II referrals, 66 assessments (100%) were initiated in a timely manner.

**Chart 9: Timely Initiation of Child Maltreatment Assessments**



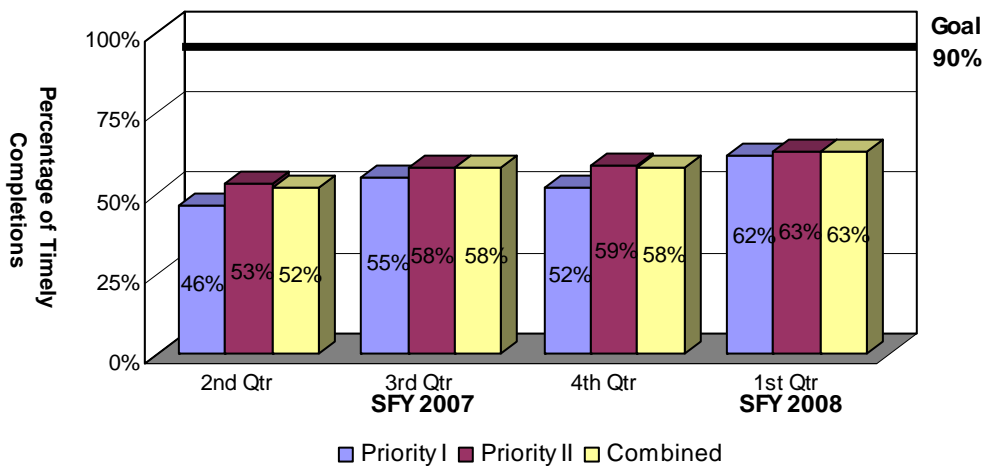
<sup>3</sup> DCFS had 452 Priority I referrals and 3,534 Priority II referrals that were initiated in a timely manner. Of those, 106 Priority I (23%) and 1,186 Priority II referrals (34%) were considered compliant due to reasonable diligence. CACD had 1,465 Priority I referrals and 66 Priority II referrals that were initiated in a timely manner. Of those, 281 Priority I (19%) and 12 Priority II (18%) referrals were considered compliant due to reasonable diligence.

**Timely Completion of Child Maltreatment Assessments**

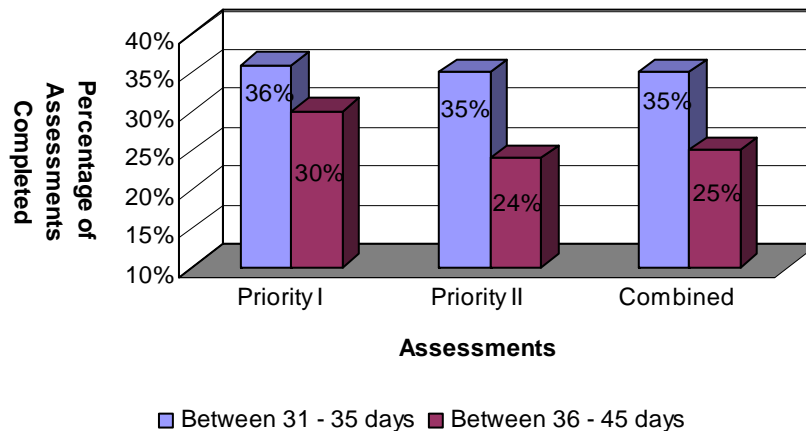
Of the 501 DCFS Priority I assessments initiated, 311 (62%) were completed within the required 30-day period. Of the 4,372 DCFS Priority II assessments initiated, 2,762 (63%) were completed within the required 30-day period. Of the total 4,873 assessments assigned to DCFS, there were 3,073 assessments completed in a timely fashion. These completions resulted in a compliance rate of 63 percent, which was five percentage points higher than the fourth quarter but below the goal of 90 percent. (See plan of action in the Executive Summary.)

As referenced earlier, the Crimes Against Children Division (CACD) of the Arkansas State Police was responsible for 1,567 of the 6,440 incoming referrals during the quarter. Of that number, 1,501 were Priority I referrals and 66 were Priority II referrals. Of the Priority I assessments, 1,220 (81%) were completed in a timely fashion. Of the Priority II assessments, 53 (80%) were completed in a timely fashion.

**Chart 10: Timely Completion of Assessments**



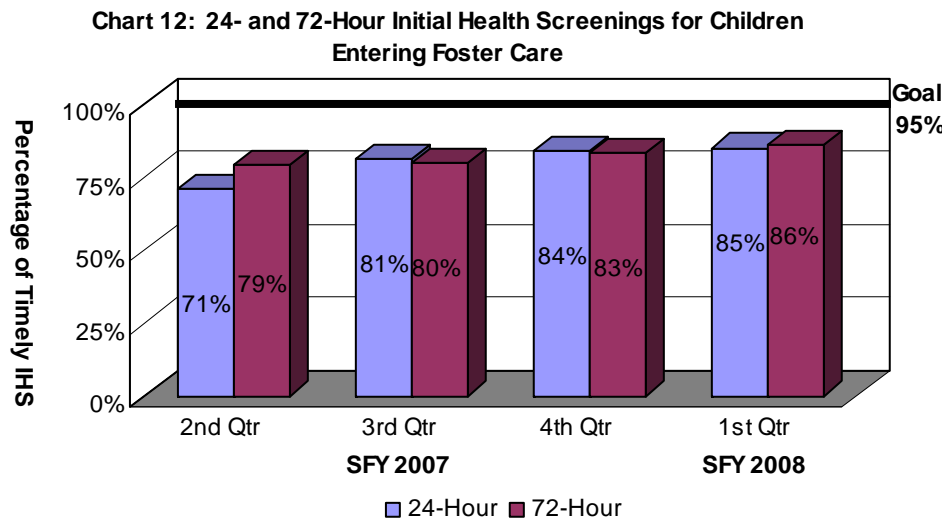
**Chart 11: Overdue Assessments Completed between 31 to 45 Days**



**24- and 72-Hour Initial Health Screenings for Children Entering Foster Care**

When a child enters foster care due to an allegation of severe maltreatment or if there is evidence of acute illness or injury, DCFS must conduct an initial health screening within 24 hours of the child’s removal from the home. Of the 137 children who required the 24-hour health screening during the first quarter, 116 children (85%) received the screening in a timely manner. The compliance rate was one percentage point higher than the previous quarter and did not meet the goal of 95 percent.

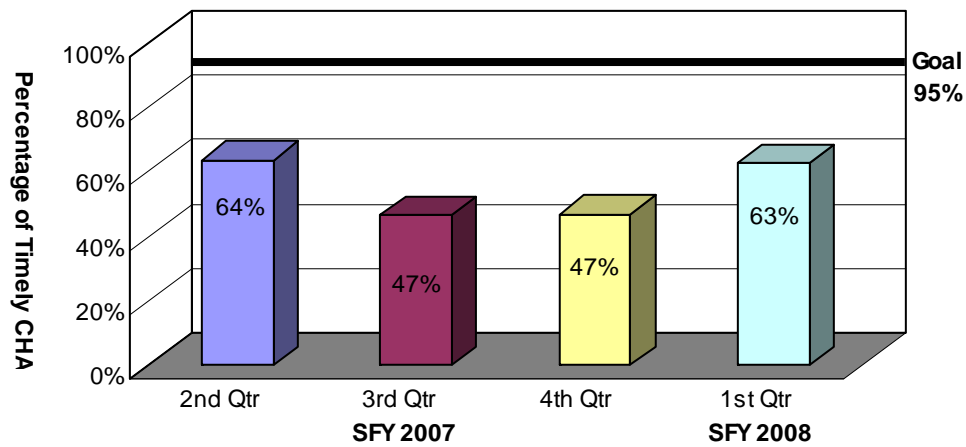
All children entering foster care who do not require the initial 24-hour health screening must still undergo an initial health screening within 72 hours of their removal. Of the 707 children, 609 (86%) received their screenings in a timely manner, which was three percentage points higher than the previous quarter and but did not meet the goal of 95 percent. (See plan of action in the Executive Summary.)



### ***Comprehensive Health Assessments***

All children entering foster care must receive a comprehensive health assessment that evaluates their physical and mental health status within 60 days of entering foster care. Between May 2, 2007, and July 3, 2007, 277 children entered foster care and remained in care for at least 60 days. Of those children, 174 received their comprehensive health assessment within 60 days after entering care. The resulting compliance rate was 63 percent. This was 16 percentage points higher than the previous quarter, and below the goal of 95 percent. (See plan of action in the Executive Summary.)

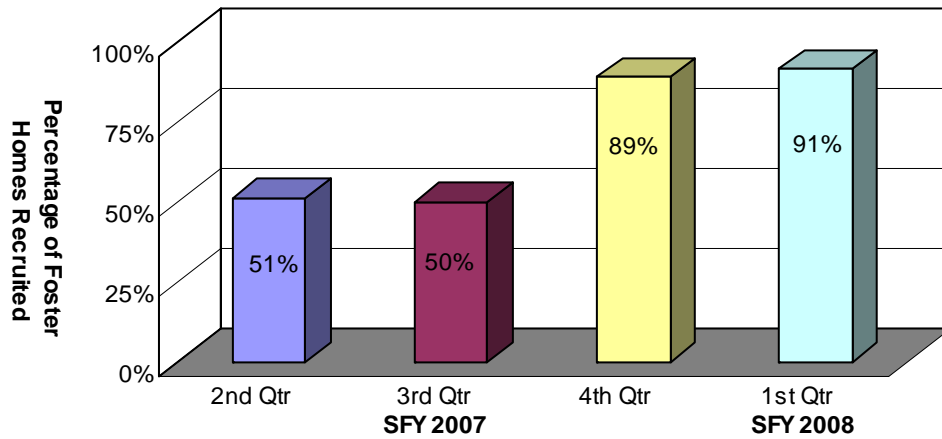
**Chart 13: Comprehensive Health Assessments**



### ***Foster Home Recruitment***

DCFS recruited 73 new foster homes during the first quarter, fewer than the goal of 80 new homes. The 91 percent compliance rate was two percentage points higher than the previous quarter (89%).

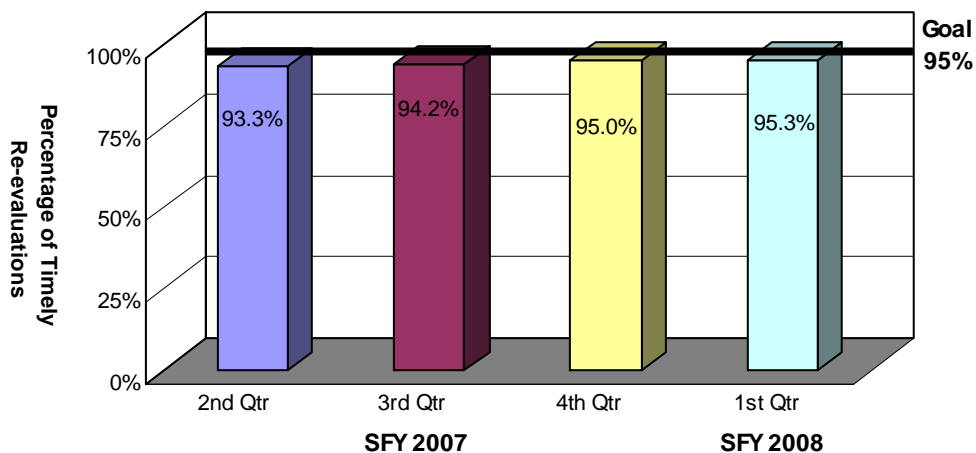
**Chart 14: Foster Home Recruitment**



### ***Foster Home Re-evaluations***

On an annual basis, at a minimum, DCFS conducts required re-evaluations of each foster home's ability to care for children. Of the 993 active foster homes during the first quarter, staff completed current re-evaluations for 946 homes. The resulting 95.3 percent compliance rate was slightly higher than the previous quarter and met the goal of 95 percent compliance.

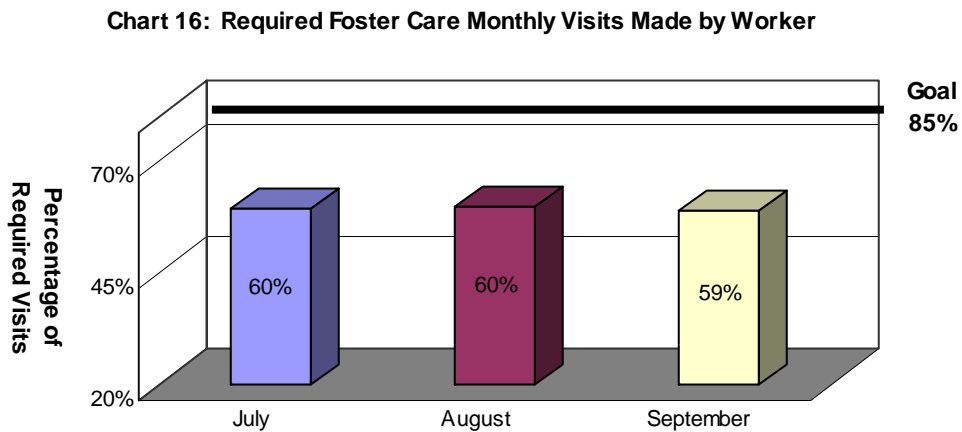
**Chart 15: Foster Home Re-evaluations**



***Required Visits Made by Worker***

DCFS acknowledges the importance of worker contact with children in foster care and believes that these visits should be in the home as often as possible. However, DCFS also recognizes that face-to-face visits in other locations can also meet good practice objectives. Consequently, the measurement of required monthly visits with children in care considers face-to-face visits in any setting as compliant.

During the first quarter, the percentage of children who received a visit during the quarter averaged 59 percent from July to September. (See plan of action in the Executive Summary.)



### **PART III: DESCRIPTION OF POPULATION AND SERVICES**

This section describes the number and status of maltreatment assessments; children who were served in foster care; and children who were provided adoption services.

Section I outlines characteristics of children in true maltreatment reports such as age, gender and ethnicity, and specifically compares state ethnicity data to national data. Additionally, this section defines the types of allegations in maltreatment reports.

Section II describes the foster care population. Specifically, it describes the characteristics of children in foster care; entries and exits of children in foster care; reasons children come into care; lengths of stay for children in foster care as well as children in relative care; placements of children in foster care; and the number of placements children experience while in care.

Section III reports adoption data such as the characteristics of children available for adoption; current placement of those children; characteristics of children placed in adoptive homes; children whose parents have terminated their parental rights but have not been placed in adoptive homes; finalized adoptions; and adoption subsidies.

## Part III: Description of Population and Services

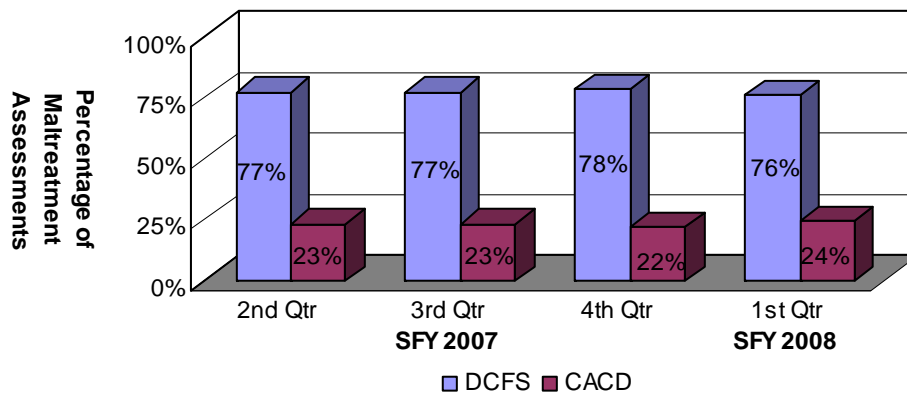
### Section I: True Child Maltreatment Reports

#### *Child Maltreatment Assessments*

During the first quarter, 6,440 maltreatment assessments were assigned between DCFS and CACD. Of those, 4,837 assessments (76%) were assigned to DCFS. This figure represented a decrease in the number of assessments assigned to DCFS from the previous quarter (7,689), and an increase in the number assigned from the same quarter ending one year ago (4,531).

Of those same 6,440 assessments, 1,567 (24%) were assigned to CACD. This figure represented a decrease in the number of assessments assigned to CACD from the previous quarter (1,688), and an increase in the number assigned from the same quarter ending one year ago (1,527).

Chart 17a: Child Maltreatment Assessments



Of the 6,440 maltreatment assessments assigned during the first quarter of SFY 2008, 1,508 reports (23%) were found to be true, which was two percentage points lower than the same quarter one year ago (25%). The national percentage is 25 percent<sup>4</sup>. There were 2,224 victim children involved in the 1,508 true reports during the quarter, which represented an increase in the number of victim children during the same quarter one year ago (2,132).

**Table 2: Child Maltreatment Assessments**

	<b>Total Assessments</b>	<b>True Assessments</b>	<b>Percent True</b>
<b>2nd Qtr SFY 2007</b>	6,738	1,595	24%
<b>3rd Qtr SFY 2007</b>	6,338	1,599	25%
<b>4th Qtr SFY 2007</b>	7,689	1,914	25%
<b>1st Qtr SFY 2008</b>	6,440	1,508	23%

---

<sup>4</sup> Source: Child Maltreatment 2005, Reports from the States to the National Child Abuse and Neglect Data System, U.S. Department of Health and Human Services, Administration for Children and Families, Administration on Children, Youth and Families, Children's Bureau.

**Characteristics of Children in True Maltreatment Reports**

As referenced previously, 2,224 victim children were involved in true reports during the first quarter. The table below outlines the demographic information for the victim children during the quarter<sup>5</sup>.

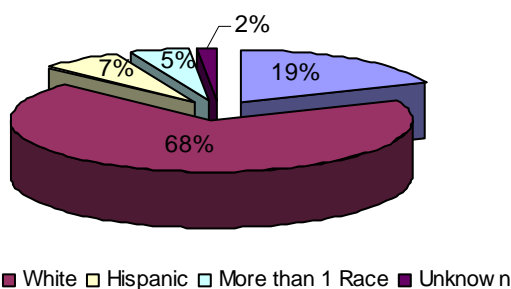
**Table 3: Characteristics of Children in True Maltreatment Reports  
1st Quarter SFY 2008**

Age	Gender	White	Black	Asian	AIAN	NAPI	Hispanic	More Than 1 Race	Total
0 to 1	Female	79	43	0	0	0	6	8	136
	Male	104	34	0	0	0	10	13	161
2 to 5	Female	198	45	0	0	1	12	16	272
	Male	212	57	1	0	2	34	27	333
6 to 11	Female	253	54	0	0	0	25	16	348
	Male	215	53	2	1	1	17	10	299
12 to 15	Female	224	65	0	0	2	24	11	326
	Male	96	33	2	0	1	7	3	142
16 to 18	Female	95	23	0	0	0	8	3	129
	Male	31	7	0	0	0	4	1	43
18+	Female	0	0	0	0	0	0	0	0
	Male	0	0	0	0	0	0	0	0
<b>Total*</b>		<b>1,507</b>	<b>414</b>	<b>5</b>	<b>1</b>	<b>7</b>	<b>147</b>	<b>108</b>	<b>2,189</b>

\*Demographic data had not been entered into CHRIS for 35 children.

Of the children involved in true maltreatment reports, 68 percent were white and 19 percent were black.

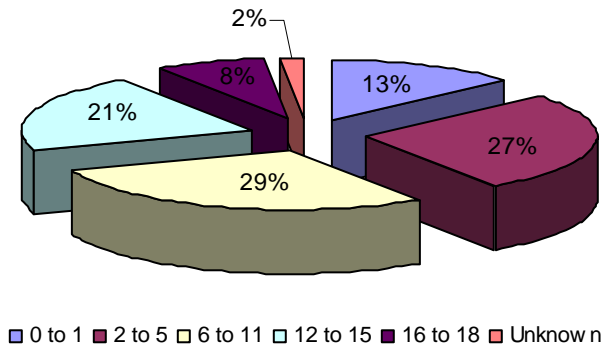
**Chart 17a: Ethnicity of Children in True Reports**



<sup>5</sup> Table three, and each subsequent demographic table, divides up “other” races and ethnicities into the following categories: “Hispanic,” “More than One Race,” “Asian” (includes Indonesian, Cambodian, Hmong and Vietnamese), “AIAN” (includes Native American, Alaskan Native and American Indian) and “NAPI” (includes Native Hawaiian and other Pacific Islanders).

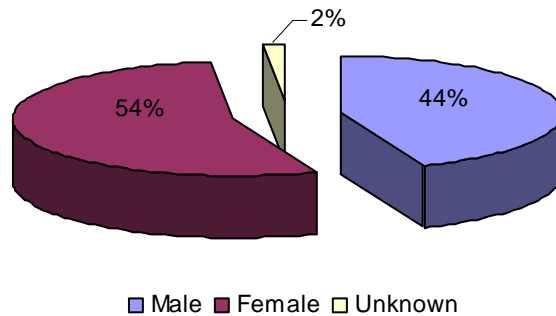
Children between the ages of 6 and 11 represented the largest group of children involved in true maltreatment reports (29%). These percentages were similar to the previous quarter.

**Chart 17b: Ages of Children in True Reports**



More female children (54%) than male children (44%) were involved in true maltreatment reports. These percentages were also similar to the previous quarter.

**Chart 17c: Gender of Children in True Reports**



***Children Involved in Allegations of True Maltreatment Reports***

During the quarter, the majority of the 2,224 children involved in true maltreatment reports were involved in neglect allegations (75%), followed by sexual abuse allegations (36%) and physical abuse allegations (33%)<sup>6</sup>.

**Table 4: Percentage of Children Involved in True Allegations of Maltreatment  
4th Quarter SFY 2007 – 1st Quarter SFY 2008**

	4th Quarter		1st Quarter	
Neglect	2,229	78%	1,669	75%
Physical Abuse	952	33%	731	33%
Sexual Abuse	843	30%	811	36%

---

<sup>6</sup> The total number of children represented will outnumber the total children involved in true maltreatment reports because a child can be involved in more than one allegation. Therefore, the sum of percentages of children involved in maltreatment reports will be greater than 100 percent.

## Part III: Description of Population and Services

### Section II: Foster Care

#### *Characteristics of Children in Foster Care*

During the quarter, 4,570 children were in foster care. This number includes children who remained in care from previous quarters as well as children who came into care during the quarter. The following table outlines the characteristics of children who were in care during the quarter.

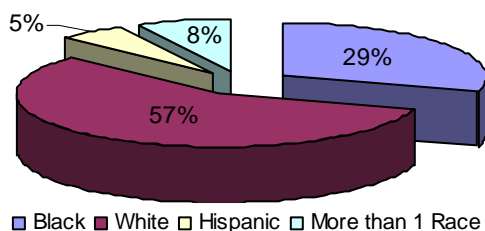
**Table 5: Characteristics of Children in Foster Care During the Quarter**  
1st Quarter SFY 2008

Age	Gender	White	Black	Asian	AIAN	NAPI	Hispanic	More Than 1 Race	Total
0 to 1	Female	170	90	0	2	0	19	23	304
	Male	171	92	1	2	0	16	25	307
2 to 5	Female	289	165	2	0	0	34	38	528
	Male	325	161	0	3	0	42	59	590
6 to 11	Female	321	161	0	0	1	29	38	550
	Male	325	147	0	1	1	42	37	553
12 to 15	Female	272	135	0	1	0	22	34	464
	Male	256	119	1	0	2	14	38	430
16 to 18	Female	217	104	3	0	0	12	22	358
	Male	155	83	2	1	1	7	14	263
18+	Female	57	42	0	0	0	5	11	115
	Male	54	39	1	0	0	3	5	102
<b>Total*</b>		<b>2,612</b>	<b>1,338</b>	<b>10</b>	<b>10</b>	<b>5</b>	<b>245</b>	<b>344</b>	<b>4,564</b>

\*Demographic information had not been entered into CHRIS for six children.

The chart below shows that 57 percent of the children in foster care during the quarter were white and 29 percent were black. National data reveal that only 41 percent of the children in the national foster care system were white, while 32 percent of the children were black<sup>7</sup>.

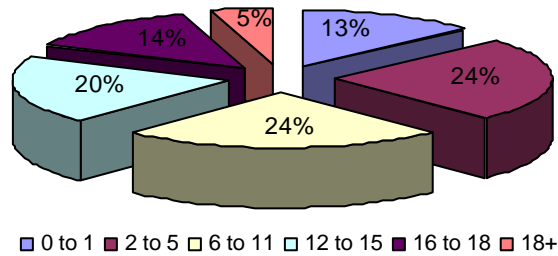
**Chart 18a: Ethnicity of Children in Care**  
During the Quarter



<sup>7</sup> Adoption and Foster Care Analysis and Reporting System (AFCARS) preliminary data submitted for children in foster care between 10/1/2004 and 9/30/2005 as of September 2006.

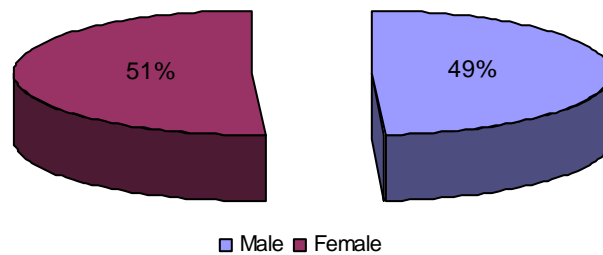
The following chart shows that children between the ages of 2 to 5 (24%) and 6 to 11 (24%) represented the largest groups of children who were in care during the quarter. These percentages were similar to those of the previous quarter.

**Chart 18b: Ages of Children in Foster Care During the Quarter**



The following chart shows that 51 percent of the children in foster care during the quarter were female and 49 percent were male. These percentages were also similar to the previous quarter.

**Chart 18c: Gender of Children in Foster Care During the Quarter**



At the end of the quarter, there were 3,701 children in foster care, a decrease from the 3,728 children in care at the end of the fourth quarter. The following table outlines the characteristics of the children in foster care at the end of the first quarter.

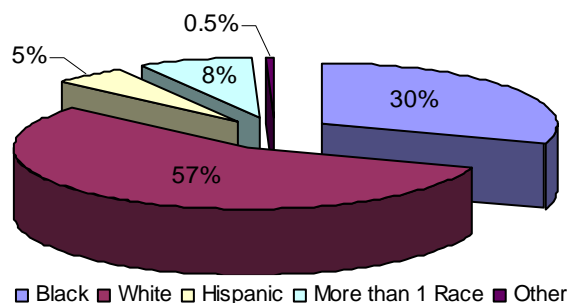
**Table 6: Characteristics of Children in Foster Care at the End of the Quarter  
1st Quarter SFY 2008**

Age	Gender	White	Black	Asian	AIAN	NAPI	Hispanic	More Than 1 Race	Total
0 to 1	Female	137	71	0	1	0	14	22	245
	Male	130	80	0	1	0	12	19	242
2 to 5	Female	215	137	2	0	0	30	30	414
	Male	253	124	0	3	0	29	51	460
6 to 11	Female	240	120	0	0	0	19	30	409
	Male	260	124	0	1	0	37	33	455
12 to 15	Female	224	112	0	1	0	19	31	387
	Male	215	106	1	0	0	12	33	367
16 to 18	Female	192	91	3	0	0	9	16	311
	Male	135	75	1	1	1	6	13	232
18+	Female	44	34	0	0	0	3	9	90
	Male	47	31	1	0	0	2	2	83
<b>Total*</b>		<b>2,092</b>	<b>1,105</b>	<b>8</b>	<b>8</b>	<b>1</b>	<b>192</b>	<b>289</b>	<b>3,695</b>

\*Demographic information had not been entered into CHRIS for six children.

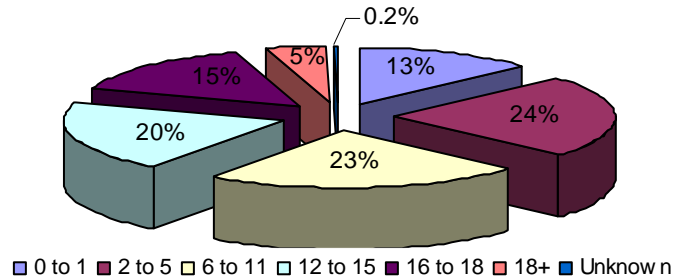
The chart below shows that 57 percent of the children in foster care at the end of the quarter were white, while 30 percent of the children were black. These percentages were consistent with the previous four quarters.

**Chart 19a: Ethnicity of Children in Foster Care at the End of the Quarter**



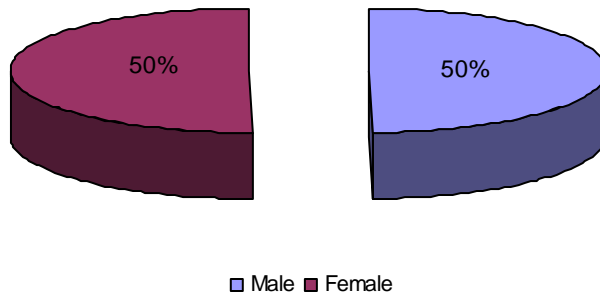
The following chart shows that children between the ages of 2 to 5 (24%) and 6 to 11 (23%) represented the largest groups of children who were in care at the end of the quarter.

**Chart 19b: Ages of Children in Foster Care at the End of the Quarter**



The following chart shows that 50 percent of the children in foster care at the end of the quarter were female and 50 percent were male. These percentages were also similar to the previous quarter.

**Chart 19c: Gender of Children in Foster Care at the End of the Quarter**



**Entries into Foster Care**

The data show that 994 children entered foster care during the first quarter, an increase from the fourth quarter (986).

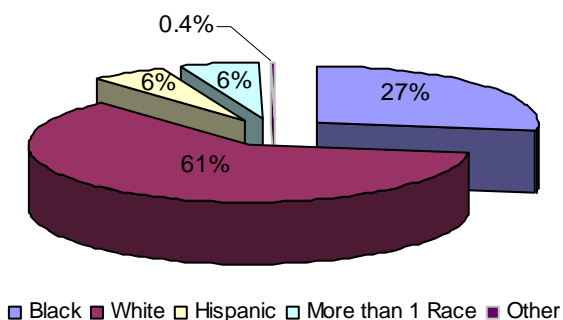
**Table 7: Characteristics of Children Entering Foster Care During the Quarter  
1st Quarter SFY 2008**

Age	Gender	White	Black	Asian	AIAN	NAPI	Hispanic	More Than 1 Race	Total
0 to 1	Female	62	29	0	1	0	10	8	110
	Male	75	25	0	1	0	6	8	115
2 to 5	Female	62	36	0	0	0	4	9	111
	Male	72	38	0	0	0	11	9	130
6 to 11	Female	85	45	0	0	0	10	6	146
	Male	68	26	0	0	0	8	3	105
12 to 15	Female	65	31	0	0	0	4	4	104
	Male	55	19	1	0	0	2	3	80
16 to 18	Female	40	14	0	0	0	0	5	59
	Male	23	7	1	0	0	1	1	33
<b>Total*</b>		<b>607</b>	<b>270</b>	<b>2</b>	<b>2</b>	<b>0</b>	<b>56</b>	<b>56</b>	<b>993</b>

\*Demographic data had not been entered into CHRIS for one child.

The chart below shows that 61 percent of the children who entered foster care during the quarter were white, while 27 percent of the children were black. National data indicate that 47 percent of the children who entered care were white, 26 percent were black and 18 percent were Hispanic<sup>8</sup>.

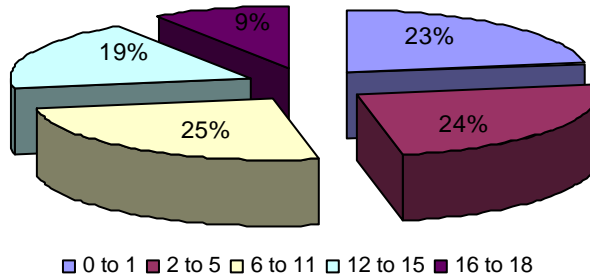
**Chart 20a: Ethnicity of Children who Entered Care**



<sup>8</sup> Adoption and Foster Care Analysis and Reporting System (AFCARS) preliminary data submitted for children in foster care between 10/1/2004 and 9/30/2005 as of September 2006.

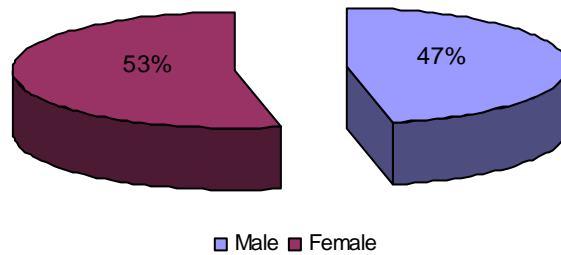
The following chart shows that children between the ages of two and five (25%) represented the largest group of children who entered foster care during the quarter.

**Chart 20b: Ages of Children who Entered Care**



The following chart shows the gender of the children who entered foster care during the first quarter. Of the 994 children who entered care, 53 percent of the children were female and 47 percent were male.

**Chart 20c: Gender of Children who Entered Care**



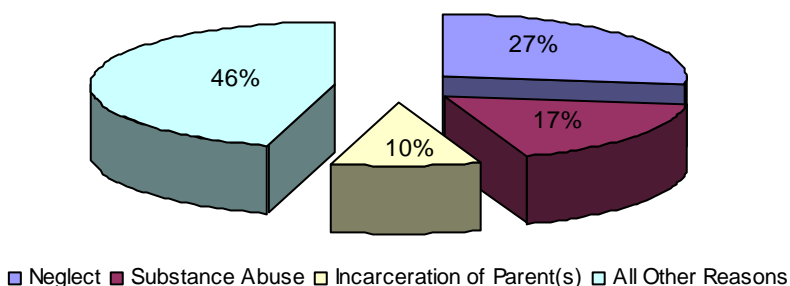
The reasons for entry into foster care during the quarter (Table 8) remained very similar to the reasons for children’s entry into care at the end of the quarter (Table 9). Neglect and substance abuse<sup>9</sup> were the most prevalent reasons children entered care.

**Table 8: Reasons Children were Placed in Foster Care During the Quarter by Age  
1st Quarter SFY 2008**

	0 to 1	2 to 5	6 to 11	12 to 15	16 to 18	18+	Total
<b>Neglect</b>	449	586	658	421	118	4	<b>2,236</b>
<b>Substance Abuse</b>	367	355	371	275	73	3	<b>1,444</b>
<b>Parent Incarceration</b>	161	236	244	159	39	1	<b>840</b>
<b>Physical Abuse</b>	159	167	213	196	70	0	<b>805</b>
<b>Child’s Behavior</b>	0	22	91	241	101	2	<b>457</b>
<b>Abandonment</b>	41	68	100	108	60	1	<b>378</b>
<b>Inadequate Housing</b>	127	152	209	128	27	2	<b>645</b>
<b>Caretaker Illness</b>	85	108	153	165	55	3	<b>569</b>
<b>Sexual Abuse</b>	28	84	166	169	35	0	<b>482</b>
<b>Truancy</b>	7	14	1	55	21	1	<b>140</b>
<b>Child’s Disability</b>	14	13	23	15	2	1	<b>68</b>
<b>Parent Death</b>	7	7	16	11	8	0	<b>49</b>
<b>Sex Offender</b>	5	5	9	23	7	1	<b>50</b>
<b>Relinquishment</b>	2	5	8	10	0	0	<b>25</b>
<b>Adoption</b>	0	0	0	2	0	0	<b>2</b>
<b>Managed Mental Health</b>	0	0	1	1	1	0	<b>3</b>
<b>Other</b>	2	3	24	10	4	0	<b>43</b>
<b>Teen Parent in Care</b>	57	5	0	1	2	0	<b>65</b>
<b>Total*</b>	<b>1,511</b>	<b>1,830</b>	<b>2,327</b>	<b>1,990</b>	<b>623</b>	<b>20</b>	<b>8,301</b>

\*There are more reasons for entry than children in care because a child may have more than one reason for entry.

**Chart 21: Reasons Children in Care During the Quarter  
were Placed in Foster Care**



<sup>9</sup> Of the 1,444 reasons for entry attributed to substance abuse, substance abuse by children accounted for 103 reasons for entry (7%), while substance abuse by parents accounted for 1,341 reasons for entry (93%).

**Table 9: Reasons Children in Foster Care at the End of the Quarter were Placed in Care  
1st Quarter SFY 2008**

	White	Black	Asian	AIAN	NAPI	His-panic	More Than 1 Race	Total
<b>Neglect</b>	1,090	494	2	3	1	105	132	<b>1,827</b>
<b>Substance Abuse</b>	741	278	3	4	0	53	77	<b>1,157</b>
<b>Parent Incarceration</b>	389	175	0	5	0	50	62	<b>681</b>
<b>Physical Abuse</b>	353	208	1	0	0	38	50	<b>650</b>
<b>Child's Behavior</b>	246	96	2	0	0	9	31	<b>384</b>
<b>Abandonment</b>	154	135	0	0	0	12	26	<b>327</b>
<b>Inadequate Housing</b>	297	197	0	1	0	24	44	<b>563</b>
<b>Caretaker Illness</b>	285	127	1	3	0	15	40	<b>471</b>
<b>Sexual Abuse</b>	244	101	2	0	0	22	36	<b>405</b>
<b>Truancy</b>	74	26	0	0	0	3	9	<b>112</b>
<b>Child's Disability</b>	43	11	0	0	0	2	3	<b>59</b>
<b>Parent Death</b>	22	9	0	1	0	0	11	<b>43</b>
<b>Sex Offender</b>	32	7	0	0	0	1	3	<b>43</b>
<b>Relinquishment</b>	13	6	0	0	0	0	3	<b>22</b>
<b>Adoption</b>	1	1	0	0	0	0	0	<b>2</b>
<b>Managed Mental Health</b>	2	1	0	0	0	0	0	<b>3</b>
<b>Other</b>	17	20	0	0	0	0	2	<b>39</b>
<b>Teen Parent in Care</b>	16	28	0	0	0	10	4	<b>58</b>
<b>Total*</b>	<b>4,019</b>	<b>1,920</b>	<b>11</b>	<b>17</b>	<b>1</b>	<b>345</b>	<b>533</b>	<b>6,846</b>

\*There are more reasons for entry than children in care because a child may have more than one reason for entry.

**Exits from Foster Care**

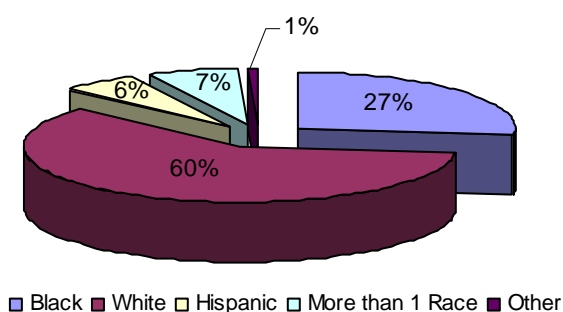
During the quarter, 950 children left foster care, which was a decrease from the previous quarter (1,032).

**Table 10: Characteristics of Children Exiting Foster Care During the Quarter  
1st Quarter SFY 2008**

Age	Gender	White	Black	Asian	AIAN	NAPI	Hispanic	More Than 1 Race	Total
0 to 1	Female	37	20	0	1	0	7	2	67
	Male	44	14	1	1	0	4	6	70
2 to 5	Female	81	31	0	0	0	5	10	127
	Male	78	40	0	0	0	13	8	139
6 to 11	Female	84	43	0	0	1	11	10	149
	Male	68	26	0	0	1	5	4	104
12 to 15	Female	50	24	0	0	0	3	3	80
	Male	45	13	0	0	2	2	5	67
16 to 18	Female	43	23	0	0	0	5	10	81
	Male	32	20	1	0	0	2	4	59
18+	Female	2	2	0	0	0	0	0	4
	Male	2	1	0	0	0	0	0	3
<b>Total*</b>		<b>566</b>	<b>566</b>	<b>2</b>	<b>2</b>	<b>4</b>	<b>57</b>	<b>62</b>	<b>950</b>

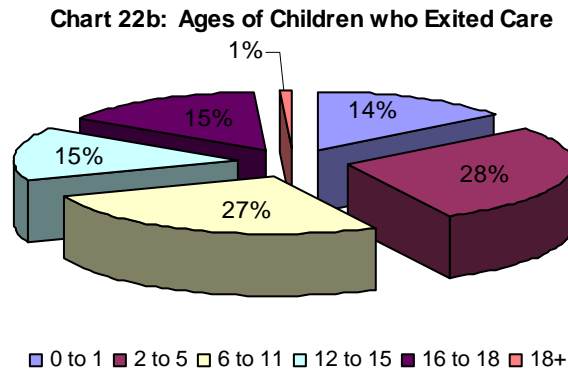
Of the 950 children who left foster care, 60 percent were white and 27 percent were black. National data indicate that 45 percent of the children who left foster care were white and 28 percent were black<sup>10</sup>. During the same quarter one year ago, 63 percent of the children who exited foster care were white, whereas 24 percent were black.

**Chart 22a: Ethnicity of Children who Exited Care**

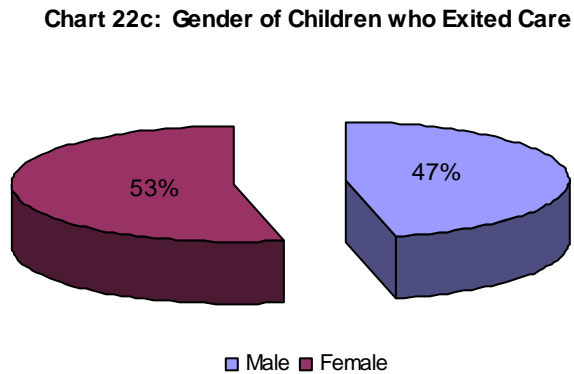


<sup>10</sup> Adoption and Foster Care Analysis and Reporting System (AFCARS) preliminary data submitted for children in foster care between 10/1/2004 and 9/30/2005 as of September 2006.

The following chart shows that children between the ages of 2 and 5 (28%) and 6 and 11 (27%) represented the largest groups of children who left foster care during the quarter.



Of the children who left care during the quarter, 53 percent were female and 47 percent were male.



**Table 11: Reasons Children Exited Foster Care by Age  
1st Quarter SFY 2008**

Reason	Age						Total
	0 to 1	2 to 5	6 to 11	12 to 15	16 to 18	18+	
Reunification	60	105	118	84	41	0	<b>408</b>
Relative Custody	57	104	106	53	39	0	<b>359</b>
Adoption	13	54	27	6	0	0	<b>100</b>
Child Aged Out	0	0	0	0	53	7	<b>60</b>
Non-Relative Custody	5	2	2	3	2	0	<b>14</b>
Custody Transfer	1	1	0	0	2	0	<b>4</b>
Emancipation	0	0	0	0	3	0	<b>3</b>
Child Death	1	0	0	1	0	0	<b>2</b>
<b>Total*</b>	<b>137</b>	<b>266</b>	<b>253</b>	<b>147</b>	<b>140</b>	<b>7</b>	<b>950</b>

The most prevalent reason that children left foster care during the quarter was reunification (43%). The second most prevalent reason was relative custody (38%). National data indicate that the three most prevalent reasons children left care were reunification (54%), adoption (18%) and relative care (11%)<sup>11</sup>.

**Chart 23: Most Prevalent Reasons Children Left Care**



<sup>11</sup> Adoption and Foster Care Analysis and Reporting System (AFCARS) preliminary data submitted for children in foster care between 10/1/2004 and 9/30/2005 as of September 2006.

***Permanency Goals of Children in Foster Care***

The Division maintains two primary goals for children in foster care: safety and permanency. The second of these concerns is expressed by setting a permanency goal for each child in foster care. For the first quarter, returning home remained the most prevalent goal among children in foster care at 52 percent. National data reveal very similar figures to the numbers shown here<sup>12</sup>.

**Table 12: Permanency Goals of Children in Foster Care  
4th Quarter SFY 2007 – 1st Quarter SFY 2008**

	4th Quarter		1st Quarter		National
<b>Return Home</b>	1,820	49%	1,991	52%	51%
<b>Adoption</b>	656	18%	696	18%	20%
<b>Independence</b>	426	11%	423	11%	n/a
<b>Remain at Home</b>	356	10%	364	9%	n/a
<b>Relative Care</b>	127	3%	178	5%	4%
<b>Guardianship</b>	16	.4%	17	.4%	3%
<b>Emancipation</b>	1	.03%	0	0%	6%
<b>Long Term Care</b>	0	0%	0	0%	7%
<b>Not Yet Established</b>	326	9%	188	5%	8%
<b>Total*</b>	<b>3,728</b>	<b>100%</b>	<b>3,857</b>	<b>100%</b>	<b>100%</b>

\*Sum of individual percentages may not equal 100% due to rounding.

<sup>12</sup> Adoption and Foster Care Analysis and Reporting System (AFCARS) preliminary data submitted for children in foster care between 10/1/2004 and 9/30/2005 as of September 2006.

***Length of Stay of Children in Foster Care***

For the 4,570 children in foster care during the quarter, 54 percent were in care less than one year. A comparison to national data indicates that children in the state’s foster care system remain in care a decidedly shorter amount of time<sup>13</sup>.

**Table 13a: Length of Stay of Children in Foster Care (Including Relative Care)  
1st Quarter SFY 2008**

	<b>Number</b>	<b>Percentage*</b>	<b>National</b>
<b>Less than 30 days</b>	530	12%	5%
<b>30-90 Days</b>	557	12%	20%
<b>3-6 Months</b>	515	11%	
<b>6-12 Months</b>	881	19%	17%
<b>12-24 Months</b>	923	20%	21%
<b>24-36 Months</b>	478	10%	12%
<b>36+ Months</b>	686	15%	25%
<b>Total*</b>	<b>4,570</b>	<b>100%</b>	<b>100%</b>

\*Sum of individual percentages may not equal 100% due to rounding.

**Table 13b: Length of Stay of Children in Relative Care  
1st Quarter SFY 2008**

	<b>Number</b>	<b>Percentage*</b>
<b>Less than 30 days</b>	16	4%
<b>30-90 Days</b>	31	7%
<b>3-6 Months</b>	66	15%
<b>6-12 Months</b>	126	28%
<b>12-24 Months</b>	106	23%
<b>24-36 Months</b>	68	15%
<b>36+ Months</b>	41	9%
<b>Total</b>	<b>454</b>	<b>100%</b>

\*Sum of individual percentages may not equal 100% due to rounding.

**Table 13c: Length of Stay of Children in Foster Care (Excluding Relative Care)  
1st Quarter SFY 2008**

	<b>Number</b>	<b>Percentage</b>
<b>Less than 30 days</b>	514	12%
<b>30-90 Days</b>	526	13%
<b>3-6 Months</b>	449	11%
<b>6-12 Months</b>	755	18%
<b>12-24 Months</b>	817	20%
<b>24-36 Months</b>	410	10%
<b>36+ Months</b>	645	16%
<b>Total</b>	<b>4,116</b>	<b>100%</b>

<sup>13</sup> Adoption and Foster Care Analysis and Reporting System (AFCARS) preliminary data submitted for children in foster care between 10/1/2004 and 9/30/2005 as of September 2006.

***Number of Placements of Children in Foster Care***

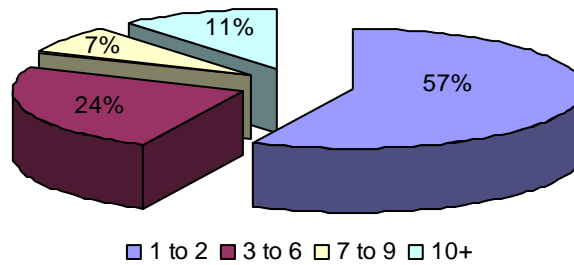
For the first quarter, 57 percent of children in care at the end of the quarter experienced two or fewer placements, which was two percentage points lower than the previous quarter.

**Table 14: Number of Placements of Children in Foster Care  
4th Quarter SFY 2007 – 1st Quarter SFY 2008**

	4th Quarter		1st Quarter	
<b>1-2 Placements</b>	2,201	59%	2,114	57%
<b>3-6 Placements</b>	890	24%	902	24%
<b>7-9 Placements</b>	243	7%	272	7%
<b>10+ Placements</b>	394	11%	413	11%
<b>Total</b>	<b>3,728</b>	<b>100%</b>	<b>3,701</b>	<b>100%</b>

\*Sum of individual percentages may not equal 100% due to rounding.

**Chart 24: Number of Placements for Children in Care at the End of the Quarter**



***Characteristics of Children who Experienced Two or More Placements***

At the end of the first quarter, 3,701 children were in foster care. Of those, 2,174 children experienced two or more placements while in care.

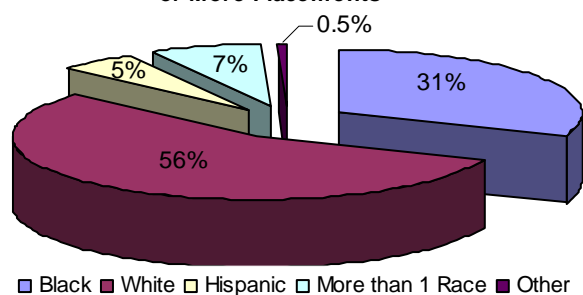
**Table 15: Characteristics of Children who Experienced Two or More Placements  
1st Quarter SFY 2008**

Age	Gender	White	Black	Asian	AIAN	NAPI	Hispanic	More Than 1 Race	Total
0 to 1	Female	40	19	0	0	0	4	6	69
	Male	42	22	0	1	0	3	5	73
2 to 5	Female	99	61	0	0	0	16	16	192
	Male	133	51	0	3	0	20	20	227
6 to 11	Female	124	74	0	0	0	13	13	224
	Male	169	83	0	1	0	22	23	298
12 to 15	Female	144	81	0	1	0	14	23	263
	Male	152	86	0	0	0	8	27	273
16 to 18	Female	179	97	1	0	0	8	17	302
	Male	134	93	1	1	1	8	12	250
18+	Female	0	0	0	0	0	0	0	0
	Male	0	0	0	0	0	0	0	0
<b>Total</b>		<b>1,216</b>	<b>667</b>	<b>2</b>	<b>7</b>	<b>1</b>	<b>116</b>	<b>162</b>	<b>2,171</b>

\*Demographic data had not been entered into CHRIS for three children.

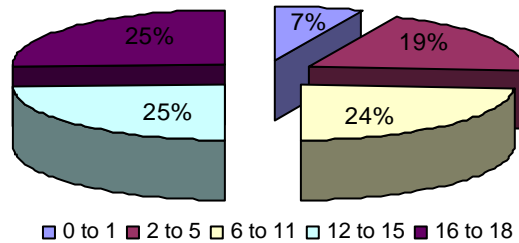
Of the 2,174 children who experienced two or more placements, 56 percent were white and 31 percent were black. These percentages were similar to the previous quarter.

**Chart 25a: Ethnicity of Children who Experienced Two or More Placements**



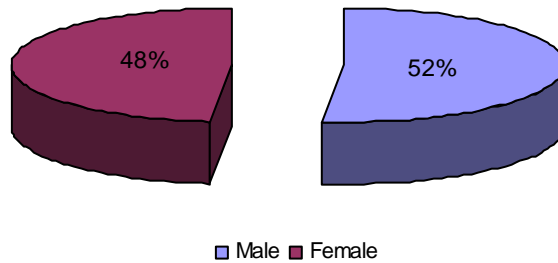
Children between the ages of 12 to 15 (25%) and 16 to 18 (25%) both represented the largest groups of children who experienced two or more placements.

**Chart 25b: Ages of Children who Experienced Two or More Placements**



More male children (52%) than female children (48%) experienced two or more placements, similar to the previous quarter.

**Chart 25c: Gender of Children who Experienced Two or More Placements**



**Current Placement of Children in Foster Care**

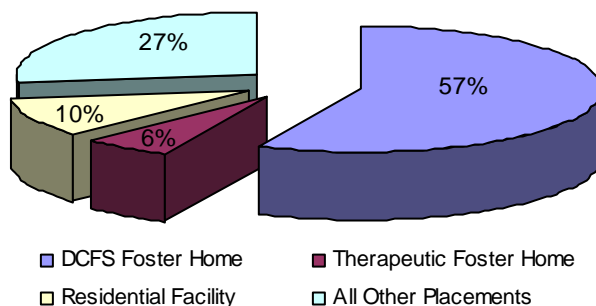
More children in foster care were placed in DCFS foster homes (57%) at the end of the fourth quarter than in any other type of foster care placement.

**Table 16: Current Placement of Children in Foster Care at the End of the Quarter**

Placement	Age						Total
	0 to 1	2 to 5	6 to 11	12 to 15	16 to 18	Over 18	
DCFS Foster Home	398	674	494	307	177	51	2,101
Relative Care	19	33	30	20	12	5	119
Therapeutic Foster Home	2	30	116	57	30	2	237
Pre-Adoptive Home	16	61	52	18	1	0	148
Emergency Shelter	5	5	24	37	24	2	97
Residential Facility	20	15	56	153	114	30	388
Youth Services	0	0	0	8	22	3	33
Runaway	0	0	1	19	66	4	90
Trial Home Visit	24	47	41	29	19	0	160
Hospital/Medical	1	2	10	9	6	1	29
ASAP CRT	0	0	1	7	6	1	15
Independent Living	0	0	0	1	3	65	69
Incarceration	0	0	0	5	11	2	18
Temporary Placement	2	7	9	5	4	3	30
Sub-Acute CRT	0	1	25	50	30	1	107
Acute CRT	0	0	6	12	7	1	26
High Risk Emergency Crisis Center	0	0	1	5	3	0	9
ASAP Residential Treatment	0	0	0	6	5	1	12
ASAP Therapeutic Foster Care	0	0	0	5	5	1	11
Unknown*	1	0	0	1	0	0	2
<b>Total</b>	<b>488</b>	<b>875</b>	<b>866</b>	<b>754</b>	<b>545</b>	<b>173</b>	<b>3,701</b>

\*Unknown due to data entry after data were collected for the report.

**Chart 26: Current Placement of Children in Foster Care**



***Characteristics of Children on Runaway Status at the End of the Quarter***

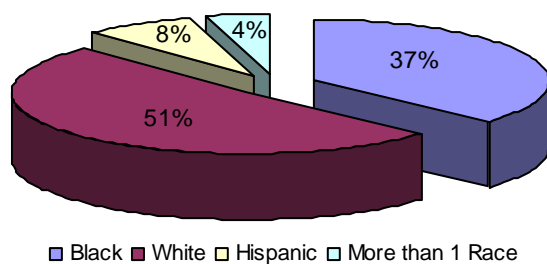
Ninety children were on runaway status at the end of the first quarter. This number represented an increase from the previous quarter (70).

**Table 17: Characteristics of Children on Runaway Status at the End of the Quarter  
1st Quarter SFY 2008**

Age	Gender	White	Black	Asian	AIAN	NAPI	Hispanic	More Than 1 Race	Total
0 to 1	Female	0	0	0	0	0	0	0	0
	Male	0	0	0	0	0	0	0	0
2 to 5	Female	0	0	0	0	0	0	0	0
	Male	0	0	0	0	0	0	0	0
6 to 11	Female	1	0	0	0	0	0	0	1
	Male	0	0	0	0	0	0	0	0
12 to 15	Female	4	2	0	0	0	3	1	10
	Male	4	5	0	0	0	0	0	9
16 to 18	Female	29	15	0	0	0	2	2	48
	Male	6	10	0	0	0	1	1	18
18+	Female	0	1	0	0	0	1	0	2
	Male	2	0	0	0	0	0	0	2
<b>Total</b>		<b>46</b>	<b>33</b>	<b>0</b>	<b>0</b>	<b>0</b>	<b>7</b>	<b>4</b>	<b>90</b>

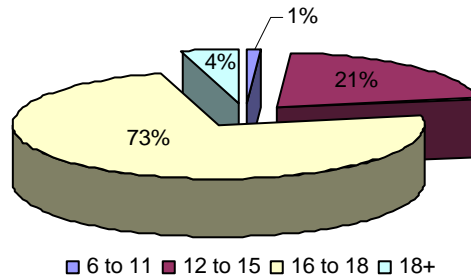
Of the children on runaway status at the end of the quarter, 51 percent were white and 37 percent were black. This was different to the children on runaway state at the end of the fourth quarter, when 41 percent were white and 41 percent were black.

**Chart 27a: Ethnicity of Children on Runaway Status at the End of the Quarter**



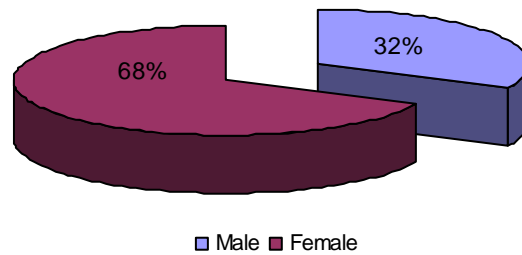
At the end of the quarter, 73 percent of the children on runaway status were between the ages of 16 and 18, which was a three percentage point decrease over the previous quarter.

**Chart 27b: Ages of Children on Runaway Status at the End of the Quarter**



More female children (68%) than male children (32%) were on runaway status at the end of the quarter.

**Chart 27c: Gender of Children on Runaway Status at the End of the Quarter**



**Characteristics of Children in Relative Care**

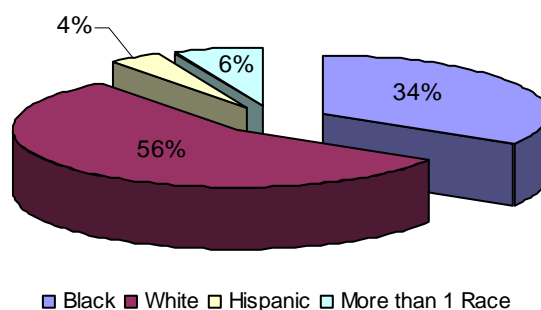
During the first quarter, 454 children were in relative care, a decrease from the previous quarter (467). This number includes children who remained in relative care from previous quarters as well as children who came into relative care during the quarter. The following table outlines the characteristics of children in relative care.

**Table 18: Characteristics of Children in Relative Care  
1st Quarter SFY 2008**

Age	Gender	White	Black	Asian	AIAN	NAPI	Hispanic	More Than 1 Race	Total
0 to 1	Female	16	11	0	0	0	2	3	32
	Male	17	10	0	0	0	3	2	32
2 to 5	Female	32	22	0	0	0	6	3	63
	Male	47	32	0	0	0	4	3	86
6 to 11	Female	42	25	0	0	0	1	5	73
	Male	25	10	0	0	0	0	4	39
12 to 15	Female	24	15	0	0	0	1	3	43
	Male	21	11	0	0	0	0	5	37
16 to 18	Female	20	10	1	0	0	1	1	33
	Male	6	6	0	0	0	0	0	12
Over 18	Female	2	2	0	0	0	0	0	4
	Male	0	0	0	0	0	0	0	0
<b>Total</b>		<b>252</b>	<b>154</b>	<b>1</b>	<b>0</b>	<b>0</b>	<b>18</b>	<b>29</b>	<b>454</b>

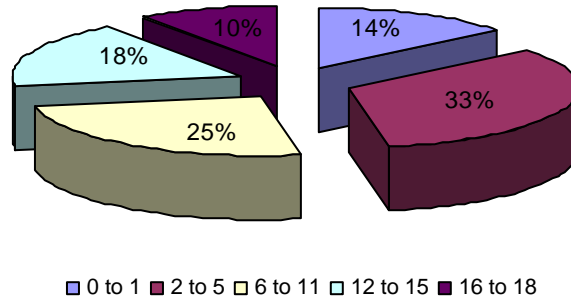
White children represented the highest percentage of children in relative care for the first quarter at 56 percent, similar to the previous quarter.

**Chart 28a: Ethnicity of Children in Relative Care**



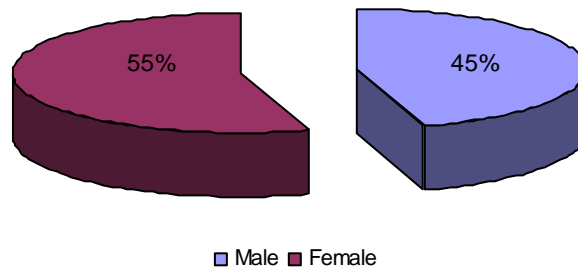
Children between the ages of 2 and 5 (33%) represented the largest age group of children in relative care, followed by children between the ages of 6 and 11 (25%).

**Chart 28b: Ages of Children in Relative Care**



Of the 454 children in relative care during the quarter, 55 percent were female and 45 percent were male, which were similar to the previous quarter.

**Chart 28c: Gender of Children in Relative Care**



**Part III: Description of Population and Services**  
**Section III: Adoption**

***Characteristics of Children with a Permanency Goal of Adoption During the Quarter***

There were 763 children with a permanency goal of adoption during the quarter. This was an increase from the previous quarter (709). The table below outlines those children’s characteristics.

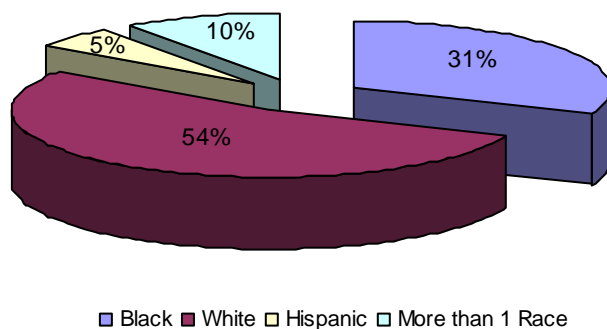
**Table 19: Characteristics of Children with a Permanency Goal of Adoption During the Quarter  
 1st Quarter SFY 2008**

Age	Gender	White	Black	Asian	AIAN	NAPI	Hispanic	More Than 1 Race	Total
0 to 1	Female	25	15	0	0	0	0	1	41
	Male	14	12	0	1	0	2	1	30
2 to 5	Female	42	35	0	0	0	3	10	90
	Male	63	32	0	0	0	8	16	119
6 to 11	Female	60	31	0	0	0	7	9	107
	Male	68	33	0	0	0	11	12	124
12 to 15	Female	36	23	0	1	0	3	12	75
	Male	57	29	1	0	0	4	10	101
16 to 18	Female	22	8	0	0	0	0	2	32
	Male	19	16	0	0	0	0	2	37
Over 18	Female	2	0	0	0	0	0	1	3
	Male	1	1	0	0	0	0	0	2
<b>Total</b>		<b>409</b>	<b>235</b>	<b>1</b>	<b>2</b>	<b>0</b>	<b>38</b>	<b>76</b>	<b>761</b>

\*Demographic data had not been entered into CHRIS for two children.

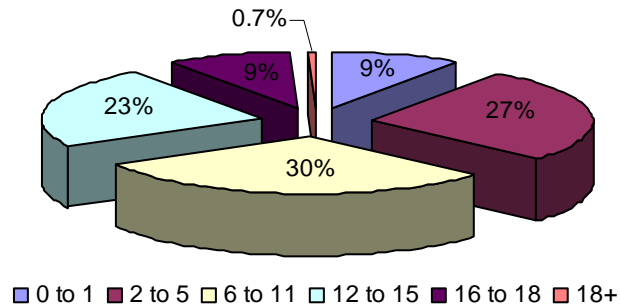
Of the 763 children with a permanency goal of adoption during the quarter, 54 percent were white, 31 percent were black and 5 percent were Hispanic. These numbers were similar to the previous quarter.

**Chart 29a: Ethnicity of Children with a Permanency Goal of Adoption During the Quarter**



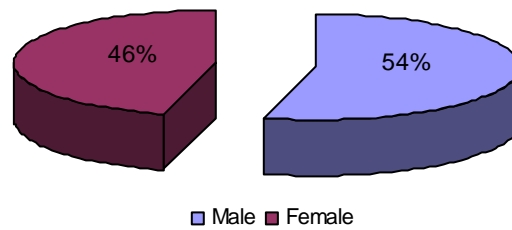
Children between the ages of 6 and 11 (30%) represented the largest group of children with a permanency goal of adoption. The percentage breakdown was similar to the previous quarter.

**Chart 29b: Ages of Children with a Permanency Goal of Adoption During the Quarter**



Of the 763 children with a permanency goal of adoption, 54 percent were male and 46 percent were female. These percentages were similar to the previous quarter.

**Chart 29c: Gender of Children with a Permanency Goal of Adoption During the Quarter**



**Characteristics of Children with a Permanency Goal of Adoption at the End of the Quarter**

There were 696 children with a permanency goal of adoption at the end of the quarter. The table below outlines those children’s characteristics.

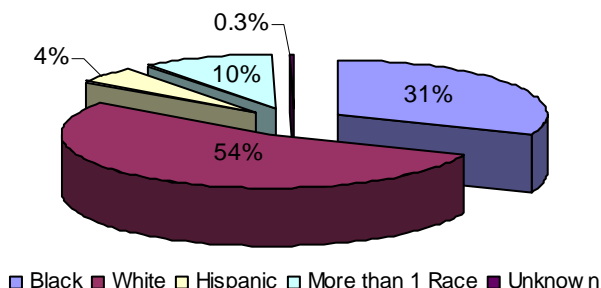
**Table 20: Characteristics of Children with a Permanency Goal of Adoption at the End of the Quarter  
1st Quarter SFY 2008**

Age	Gender	White	Black	Asian	AIAN	NAPI	Hispanic	More Than 1 Race	Total
0 to 1	Female	25	12	0	0	0	0	1	38
	Male	13	12	0	1	0	1	1	28
2 to 5	Female	34	32	0	0	0	2	10	78
	Male	54	26	0	0	0	5	15	100
6 to 11	Female	58	27	0	0	0	7	8	100
	Male	59	30	0	0	0	10	12	111
12 to 15	Female	34	23	0	1	0	3	12	73
	Male	54	29	1	0	0	3	9	96
16 to 18	Female	21	8	0	0	0	0	2	31
	Male	18	15	0	0	0	0	1	34
Over 18	Female	2	0	0	0	0	0	1	3
	Male	1	1	0	0	0	0	0	2
<b>Total</b>		<b>373</b>	<b>215</b>	<b>1</b>	<b>2</b>	<b>0</b>	<b>31</b>	<b>72</b>	<b>694</b>

\*Demographic data had not been entered into CHRIS for two children.

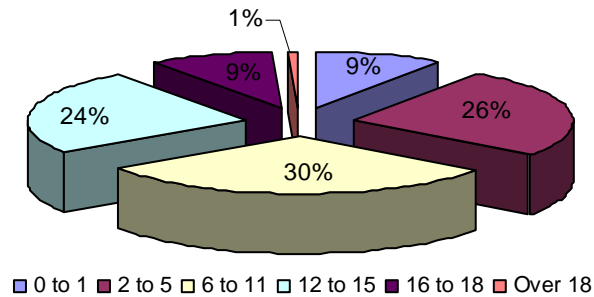
Of the 696 children with a permanency goal of adoption at the end of the quarter, 54 percent were white, 31 percent were black and 10 percent were of more than one race. These percentages were similar to the previous quarter.

**Chart 30a: Ethnicity of Children with a Permanency Goal of Adoption at the End of the Quarter**



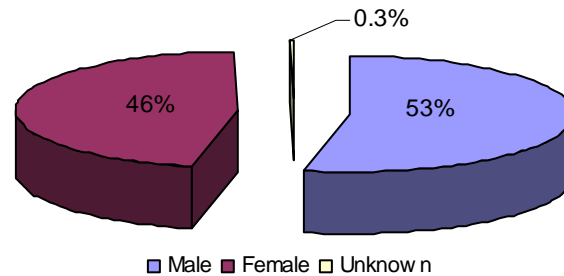
At the end of the quarter, children between the ages of 6 and 11 (30%) continued to represent the largest age group with a permanency goal of adoption, and children between the ages of 2 and 5 (26%) represented the second largest group.

**Chart 30b: Ages of Children with a Permanency Goal of Adoption at the End of the Quarter**



More male children (53%) than female children (46%) set a permanency goal of adoption at the end of the third quarter, similar to the previous quarter.

**Chart 30c: Gender of Children with a Permanency Goal of Adoption at the End of the Quarter**



***Characteristics of Children whose Parents have had Parental Rights Terminated During the Quarter***

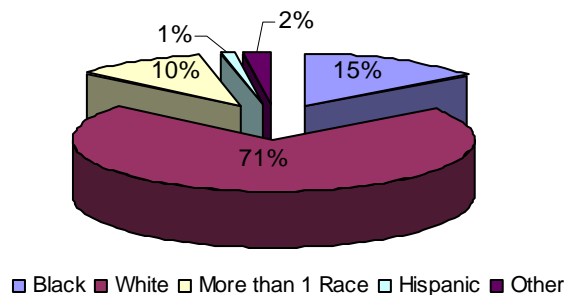
There were 87 children whose parents had their parental rights terminated during the fourth quarter. The table below outlines the characteristics of those children.

**Table 21: Characteristics of Children whose Parents have had Parental Rights Terminated During the Quarter  
1st Quarter SFY 2008**

Age	Gender	White	Black	Asian	AIAN	NAPI	Hispanic	More Than 1 Race	Total
0 to 1	Female	10	5	0	0	0	0	0	15
	Male	6	0	0	1	0	0	0	7
2 to 5	Female	11	1	0	0	0	1	2	15
	Male	10	0	0	1	0	0	1	12
6 to 11	Female	7	4	0	0	0	0	2	13
	Male	4	1	0	0	0	0	4	9
12 to 15	Female	8	1	0	0	0	0	0	9
	Male	4	1	0	0	0	0	0	5
16 to 18	Female	1	0	0	0	0	0	0	1
	Male	1	0	0	0	0	0	0	1
<b>Total</b>		<b>62</b>	<b>13</b>	<b>0</b>	<b>2</b>	<b>0</b>	<b>1</b>	<b>9</b>	<b>87</b>

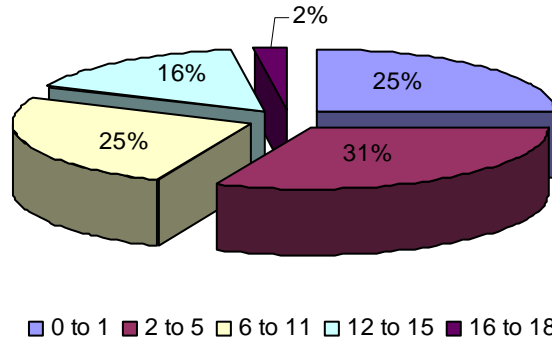
During the quarter, 71 percent of the children whose parents had their parental rights terminated during the quarter were white, 15 percent were black and 10 percent were of more than one race.

**Chart 31a: Ethnicity of Children whose Parents have had Parental Rights Terminated**



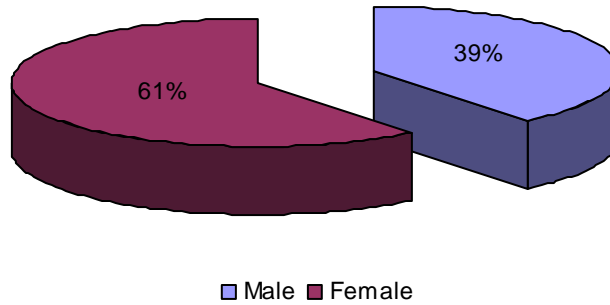
Children between the ages of 2 and 5 (31%) represented the largest group of children whose parents terminated their parental rights during the quarter.

**Chart 31b: Ages of Children whose Parents have had Parental Rights Terminated**



During the quarter, more female children (61%) than male children (39%) had parents who terminated their parental rights.

**Chart 31c: Gender of Children whose Parents have had Parental Rights Terminated**



**Characteristics of Children Available for Adoption at the End of the Quarter**

At the end of the first quarter, 404 children were available for adoption, an increase from the previous quarter (370). Demographic information for children available for adoption, shown in the table below, was very similar to previous quarters.

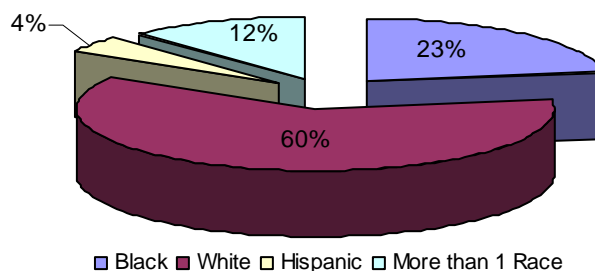
**Table 22: Characteristics of Children Available for Adoption at the End of the Quarter  
1st Quarter SFY 2008**

Age	Gender	White	Black	Asian	AIAN	NAPI	Hispanic	More Than 1 Race	Total
0 to 1	Female	13	5	0	0	0	0	1	19
	Male	7	2	0	1	0	0	1	11
2 to 5	Female	21	8	0	0	0	1	6	36
	Male	31	12	0	0	0	3	9	55
6 to 11	Female	35	15	0	0	0	4	6	60
	Male	46	14	0	0	0	5	7	72
12 to 15	Female	24	13	0	1	0	2	10	50
	Male	43	13	0	0	0	2	6	64
16 to 18	Female	12	3	0	0	0	0	2	17
	Male	12	6	0	0	0	0	1	19
<b>Total</b>		<b>244</b>	<b>91</b>	<b>0</b>	<b>2</b>	<b>0</b>	<b>17</b>	<b>49</b>	<b>403</b>

\*Demographic data had not been entered into CHRIS for one child.

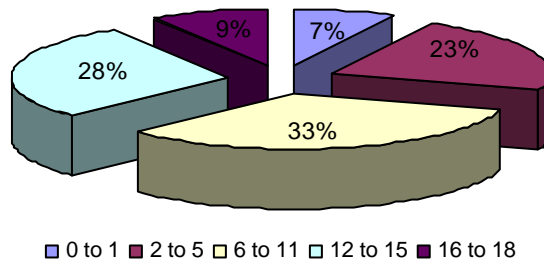
Of the children available for adoption, 60 percent were white and 23 percent were black. These percentages were similar to the previous quarter.

**Chart 32a: Ethnicity of Children Available for Adoption at the End of the Quarter**



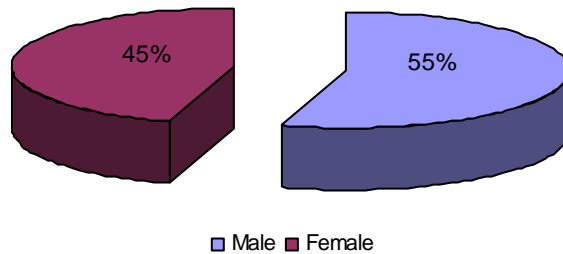
At the end of the quarter, more children between the ages of 6 and 11 (33%) were available for adoption than any other age group.

**Chart 32b: Ages of Children Available for Adoption at the End of the Quarter**



At the end of the quarter, more male children (55%) than female children (45%) were available for adoption. These percentages were similar to the fourth quarter.

**Chart 32c: Gender of Children Available for Adoption at the End of the Quarter**



***Current Placements of Children Available for Adoption***

At the end of the first quarter, more children who were available for adoption were placed in DCFS foster homes (46%) than in any other type of placement, followed by therapeutic foster homes (15%). These results were similar to the previous quarter.

**Table 23: Current Placements of Children Available for Adoption  
1st Quarter SFY 2008**

Placement	Number of Children	Percentage
DCFS Foster Home	186	46%
Pre-Adoptive Home	58	14%
Pre-Adoptive Home (Foster Parent)	6	1.5%
Therapeutic Foster Home	59	15%
Acute CRT	3	.7%
Residential Facility	48	12%
Hospital/Medical	6	1.5%
Emergency Shelter	1	.2%
Youth Services	5	1.2%
Independent Living	2	.5%
Temporary Placement	3	.7%
Sub-Acute CRT	16	4%
ASAP CRT	1	.2%
Kinship Care	4	1%
ASAP Therapeutic Foster Care	1	.2%
Incarceration	2	.5%
Runaway	2	.5%
Trial Home Visit	1	.2%
<b>Total*</b>	<b>404</b>	<b>100%</b>

\*The sum of individual percentages may not equal 100% due to rounding.

**Characteristics of Children in Pre-adoptive Placements**

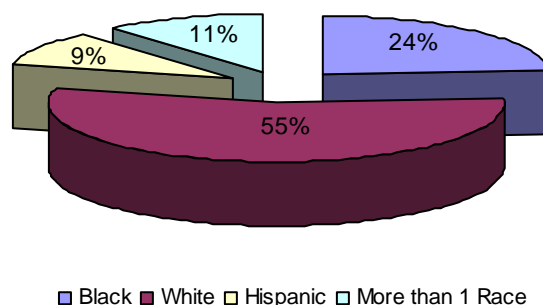
During the first quarter, 96 children were in pre-adoptive homes. This number includes children who could have entered pre-adoptive homes during a previous quarter as well as children who were placed in pre-adoptive homes during the current quarter.

**Table 24: Characteristics of Children in Pre-adoptive Placements  
1st Quarter SFY 2008**

Age	Gender	White	Black	Asian	AIAN	NAPI	Hispanic	More Than 1 Race	Total
0 to 1	Female	2	2	0	0	0	0	0	4
	Male	2	0	0	0	0	1	1	4
2 to 5	Female	13	5	0	0	0	0	2	20
	Male	10	6	0	0	0	2	3	21
6 to 11	Female	11	3	0	0	0	2	2	18
	Male	11	4	0	0	0	3	0	18
12 to 15	Female	1	1	0	0	0	0	1	3
	Male	3	2	0	0	0	1	2	8
16 to 18	Female	0	0	0	0	0	0	0	0
	Male	0	0	0	0	0	0	0	0
<b>Total</b>		<b>53</b>	<b>23</b>	<b>0</b>	<b>0</b>	<b>0</b>	<b>9</b>	<b>11</b>	<b>96</b>

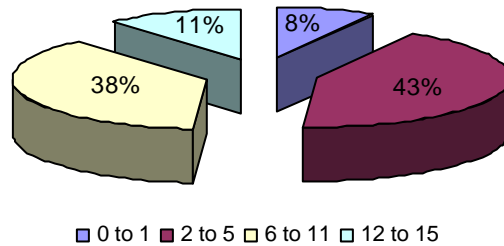
Of the 96 children in pre-adoptive homes during the quarter, 55 percent were white and 24 percent were black. During the previous quarter, 73 percent were white and 14 percent were black.

**Chart 33a: Ethnicity of Children Placed in Pre-adoptive Homes During the Quarter**



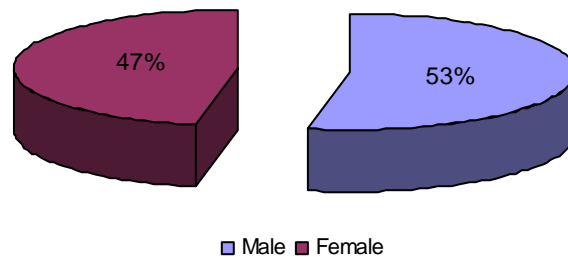
Children between the ages of 2 and 5 (43%) represented the largest group of children placed in pre-adoptive homes.

**33b: Ages of Children Placed in Pre-adoptive Homes During the Quarter**



Of the 96 children placed in pre-adoptive homes during the quarter, 53 percent were male and 47 percent were female. These percentages during the previous quarter, 51 percent female and 49 percent male.

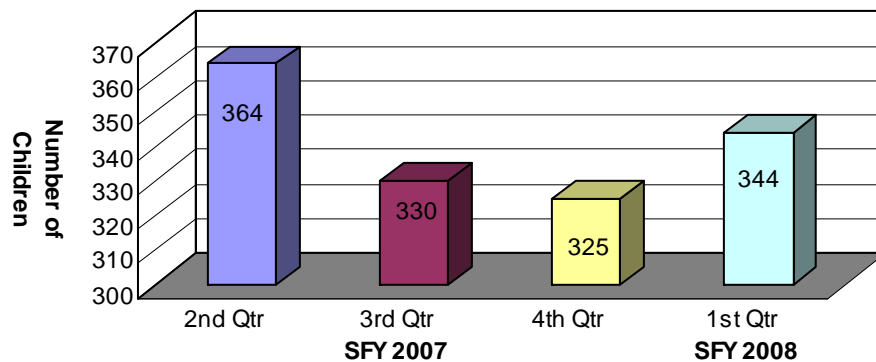
**33c: Gender of Children Placed in Pre-adoptive Homes During the Quarter**



***Children not Placed in Adoptive Homes whose Parents have had their Parental Rights Terminated***

During the first quarter, there were 344 children whose parents had their parental rights terminated but were not placed in adoptive homes, an increase from the previous quarter (325). This statistic was derived by subtracting the number of children placed in adoptive homes at the end of the quarter (60) from the number of children available for adoption at the end of the quarter (404).

**Chart 34: Children not Placed in Adoptive Homes whose Parents have had their Parental Rights Terminated**



***Children with Special Needs***

During the first quarter, 61 children with special needs were in pre-adoptive placements<sup>14</sup>. Children with special needs are defined as children who have severe medical or psychological needs that require ongoing treatment. Children at high risk for the development of serious physical, mental or emotional conditions may be considered special needs if documentation is provided by a medical professional specializing in the area of the condition for which the child is considered at risk. Other children may be considered special needs if they are Caucasian children over the age of nine, African American children at age two years or older; or children who are members of a sibling group of three or more who are to be placed together.

**Table 25: Children with Special Needs who were Placed in Adoptive Homes  
1st Quarter SFY 2008**

Special Needs Condition	Number of Children
Race	61
Age	56
Member of sibling group	30

***Characteristics of Children with Finalized Adoptions***

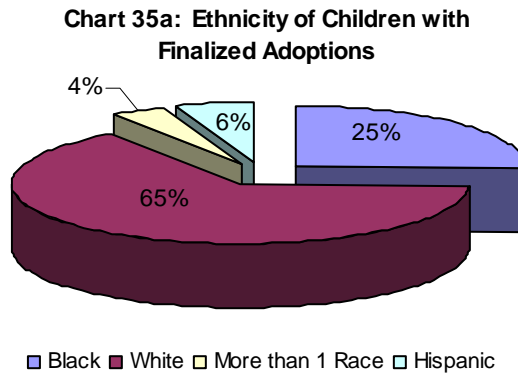
During the quarter, 106 children had their adoptions finalized, an increase from the previous quarter (94). The following table outlines the characteristics of the children with finalized adoptions.

**Table 26: Characteristics of Children with Finalized Adoptions  
1st Quarter SFY 2008**

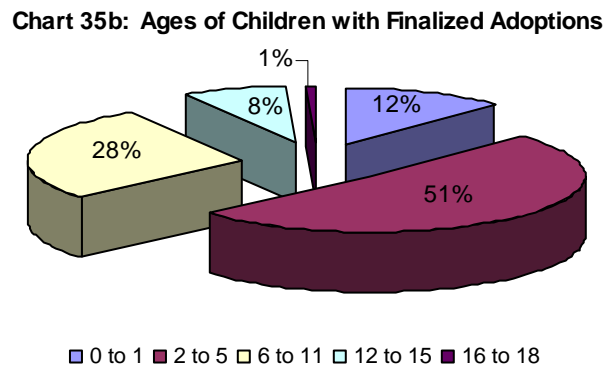
Age	Gender	White	Black	Asian	AIAN	NAPI	His-panic	More Than 1 Race	Total
0 to 1	Female	4	4	0	0	0	0	0	8
	Male	4	0	0	0	0	1	0	5
2 to 5	Female	13	3	0	0	0	0	1	17
	Male	23	9	0	0	0	3	2	37
6 to 11	Female	9	6	0	0	0	0	1	16
	Male	10	3	0	0	0	1	0	14
12 to 15	Female	2	1	0	0	0	0	0	3
	Male	3	1	0	0	0	1	0	5
16 to 18	Female	1	0	0	0	0	0	0	1
	Male	0	0	0	0	0	0	0	0
<b>Total</b>		<b>69</b>	<b>27</b>	<b>0</b>	<b>0</b>	<b>0</b>	<b>6</b>	<b>4</b>	<b>106</b>

<sup>14</sup> This number does not take into account children with severe medical and psychological needs because this data is not available in CHRIS (AR Children's Reporting and Information System). As enhancements are made to the data system to capture this information, it will be provided in future reports.

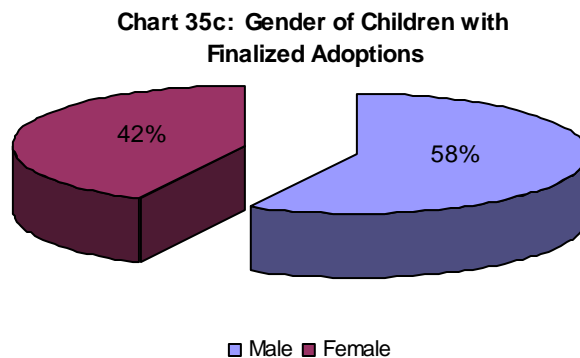
Of the 106 finalized adoptions during the first quarter, 65 percent of the adopted children were white and 25 percent were black.



Children between the ages of 2 and 5 represented the largest group of children whose adoptions were finalized during the quarter at 51 percent.



During the quarter, 42 percent of the children whose adoptions were finalized were female and 58 percent were male.



**Subsidized Adoptions**

During the first quarter, 79 children began receiving adoption subsidies. Of those, 69 children received federally-funded subsidies and 10 received state-funded subsidies.

**Characteristics of Children who Received Adoption Subsidies**

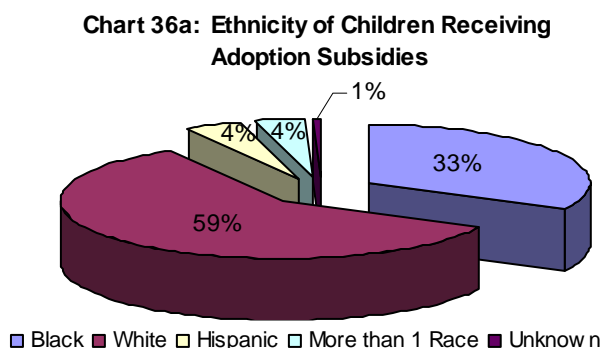
During the first quarter, 3,017 children received adoption subsidies. The following table outlines the demographics of those children.

**Table 27: Characteristics of Children Receiving Adoption Subsidies  
1st Quarter SFY 2008**

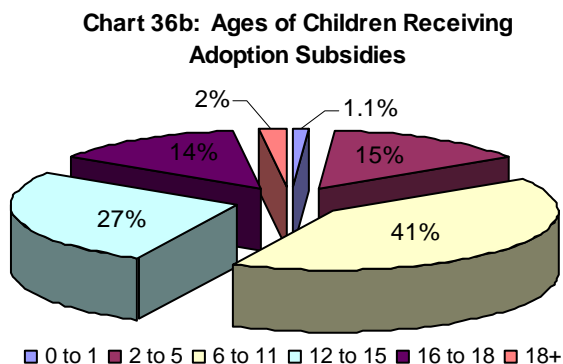
Age	Gender	White	Black	Asian	AIAN	NAPI	Hispanic	More Than 1 Race	Total
0 to 1	Female	11	6	1	0	0	0	1	19
	Male	9	4	0	0	0	1	0	14
2 to 5	Female	122	51	1	0	0	14	16	204
	Male	131	68	2	0	0	21	13	235
6 to 11	Female	357	206	2	2	0	31	35	633
	Male	363	192	0	0	0	30	24	609
12 to 15	Female	229	140	1	0	0	15	7	392
	Male	265	142	0	1	0	4	7	419
16 to 18	Female	132	67	0	0	0	7	2	208
	Male	115	83	0	0	0	5	1	204
18+	Female	20	9	0	0	0	1	0	30
	Male	15	16	0	0	0	1	0	32
<b>Total*</b>		<b>1,769</b>	<b>984</b>	<b>7</b>	<b>3</b>	<b>0</b>	<b>130</b>	<b>106</b>	<b>2,999</b>

\*Demographic data had not been entered into CHRIS for 18 children.

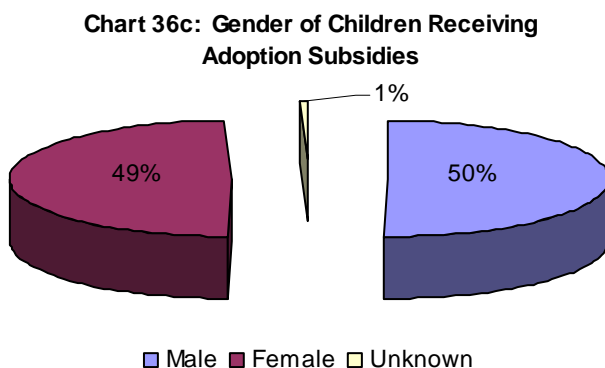
Fifty-nine percent of the children who received adoption subsidies were white and 33 percent were black, similar to the previous quarter.



The majority of the children receiving adoption subsidies during the quarter were between the ages of 6 and 11 (41%).



Of the children receiving adoption subsidies, 50 percent were male and 49 percent were female.



### *Adoptive Homes*

At the beginning of the first quarter, 492 adoptive homes were available; at the end of the first quarter, 431 adoptive homes were available.

**Table 28: Adoptive Homes  
1st Quarter SFY 2008**

	Total Adoptive Homes	Non-Foster Adoptive Homes	Foster Adoptive Homes
Homes available for children at beginning of quarter	492	199	293
Newly available homes	54	22	32
Homes that had children placed during the quarter	58	32	26
Home that experienced a disruption	8	6	2
Homes that closed without a placement	65	26	39
Homes available at the end of the quarter	431	169	262